

Wood Thrush (*Hylocichla mustelina*)

Number of Priority Blocks with Breeding Evidence

Total: 552 of 585 (94%)

Confirmed: 16 (3%)

Probable: 261 (47%)

Possible: 275 (50%)

Number of Priority Blocks in Ecoregions with Breeding Evidence

Interior Plateau: 45 of 52 (87%)

Southwestern Appalachians: 119 of 124 (96%)

Ridge and Valley: 68 of 72 (94%)

Piedmont: 74 of 76 (97%)

Southeastern Plains: 240 of 254 (94%)

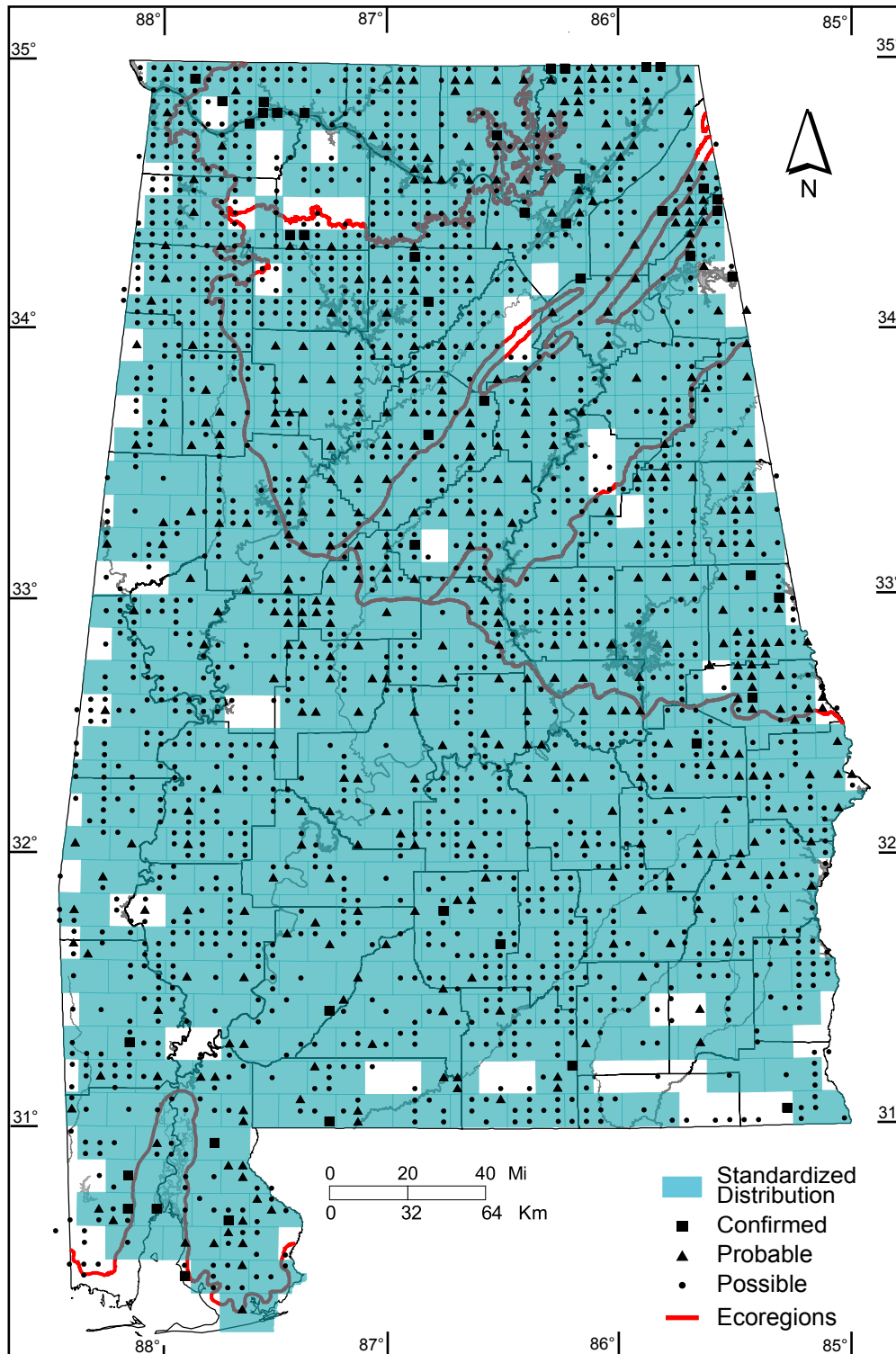
Southern Coastal Plain: 6 of 7 (86%)

Number of Blocks with Breeding Evidence

Total: 2089 of 5087 (41%)

Confirmed: 46 of 5087 (1%)

Safe Dates: May 15 - August 15



©Alabama Breeding Bird Atlas
All Rights Reserved