

Wood Duck (*Aix sponsa*)

Number of Priority Blocks with Breeding Evidence

Total: 265 of 585 (45%)

Confirmed: 86 (32%)

Probable: 110 (42%)

Possible: 69 (26%)

Number of Priority Blocks in Ecoregions with Breeding Evidence

Interior Plateau: 28 of 52 (54%)

Southwestern Appalachians: 64 of 124 (52%)

Ridge and Valley: 41 of 72 (57%)

Piedmont: 24 of 76 (32%)

Southeastern Plains: 104 of 254 (41%)

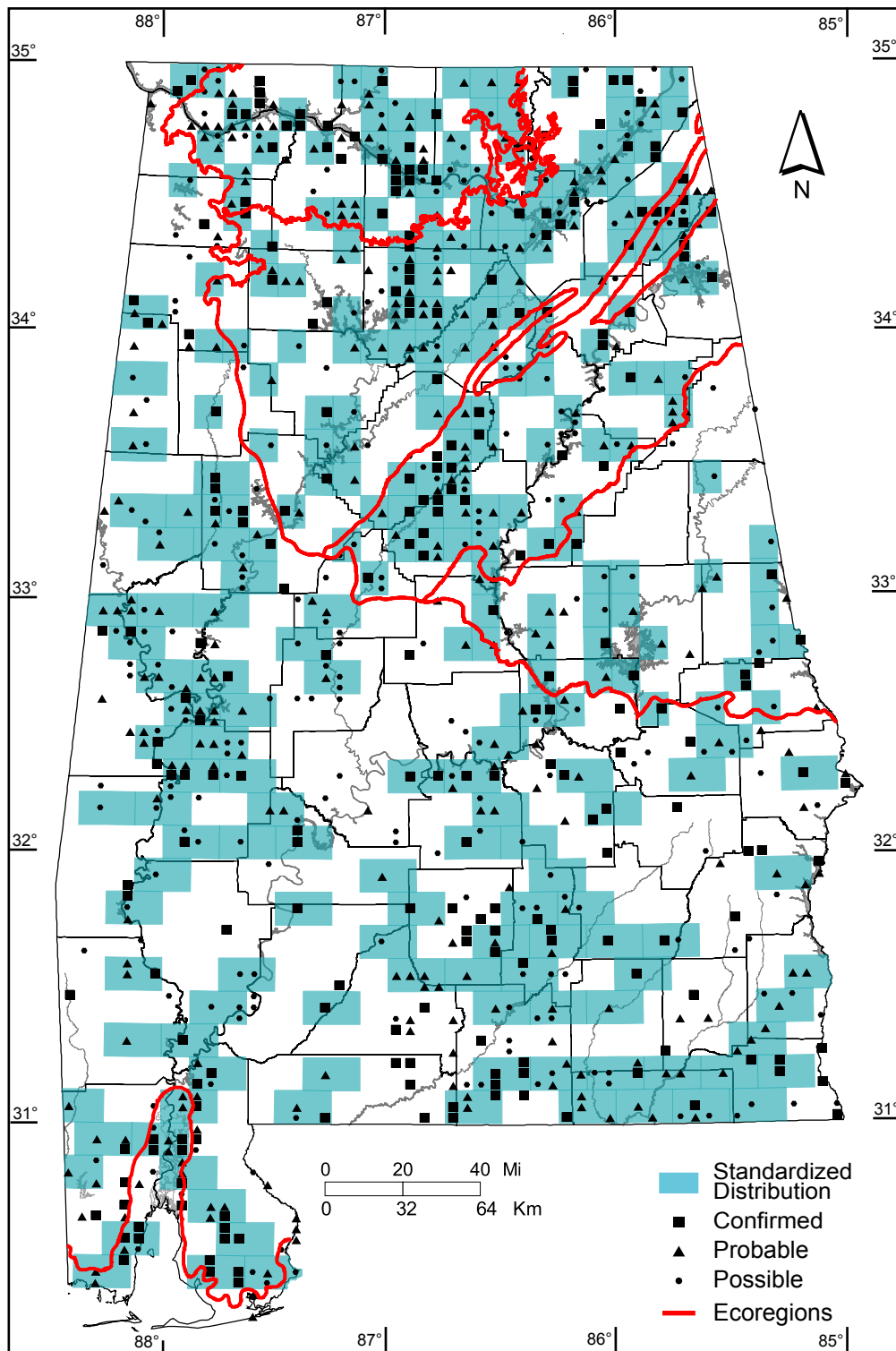
Southern Coastal Plain: 4 of 7 (57%)

Number of Blocks in Which Recorded

Total: 799 of 5087 (16%)

Confirmed: 242 of 5087 (5%)

Safe Dates: April 1 - July 31



©Alabama Breeding Bird Atlas
All Rights Reserved