

Red-winged Blackbird (*Agelaius phoeniceus*)

Number of Priority Blocks with Breeding Evidence

Total: 493 of 585 (84%)

Confirmed: 142 (29%)

Probable: 216 (44%)

Possible: 135 (27%)

Number of Priority Blocks in Ecoregions with Breeding Evidence

Interior Plateau: 52 of 52 (100%)

Southwestern Appalachians: 114 of 124 (92%)

Ridge and Valley: 67 of 72 (93%)

Piedmont: 60 of 76 (79%)

Southeastern Plains: 193 of 254 (76%)

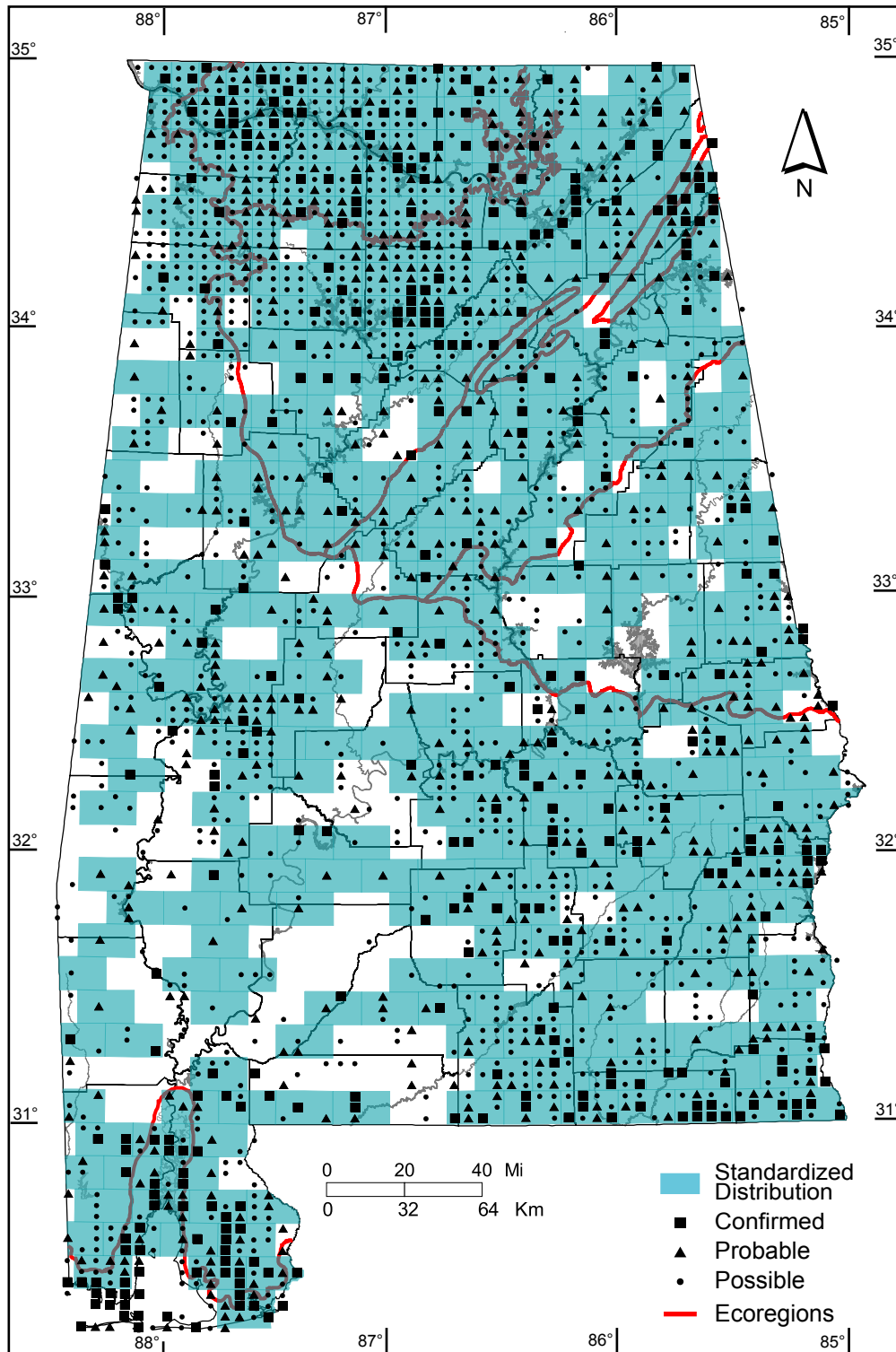
Southern Coastal Plain: 7 of 7 (100%)

Number of Blocks with Breeding Evidence

Total: 2005 of 5087 (39%)

Confirmed: 351 of 5087 (7%)

Safe Dates: May 1 - July 15



©Alabama Breeding Bird Atlas
All Rights Reserved