

Red-shouldered Hawk (*Buteo lineatus*)

Number of Priority Blocks with Breeding Evidence

Total: 473 of 585 (81%)

Confirmed: 93 (20%)

Probable: 104 (22%)

Possible: 276 (58%)

Number of Priority Blocks in Ecoregions with Breeding Evidence

Interior Plateau: 18 of 52 (35%)

Southwestern Appalachians: 100 of 124 (81%)

Ridge and Valley: 65 of 72 (90%)

Piedmont: 65 of 76 (86%)

Southeastern Plains: 220 of 254 (87%)

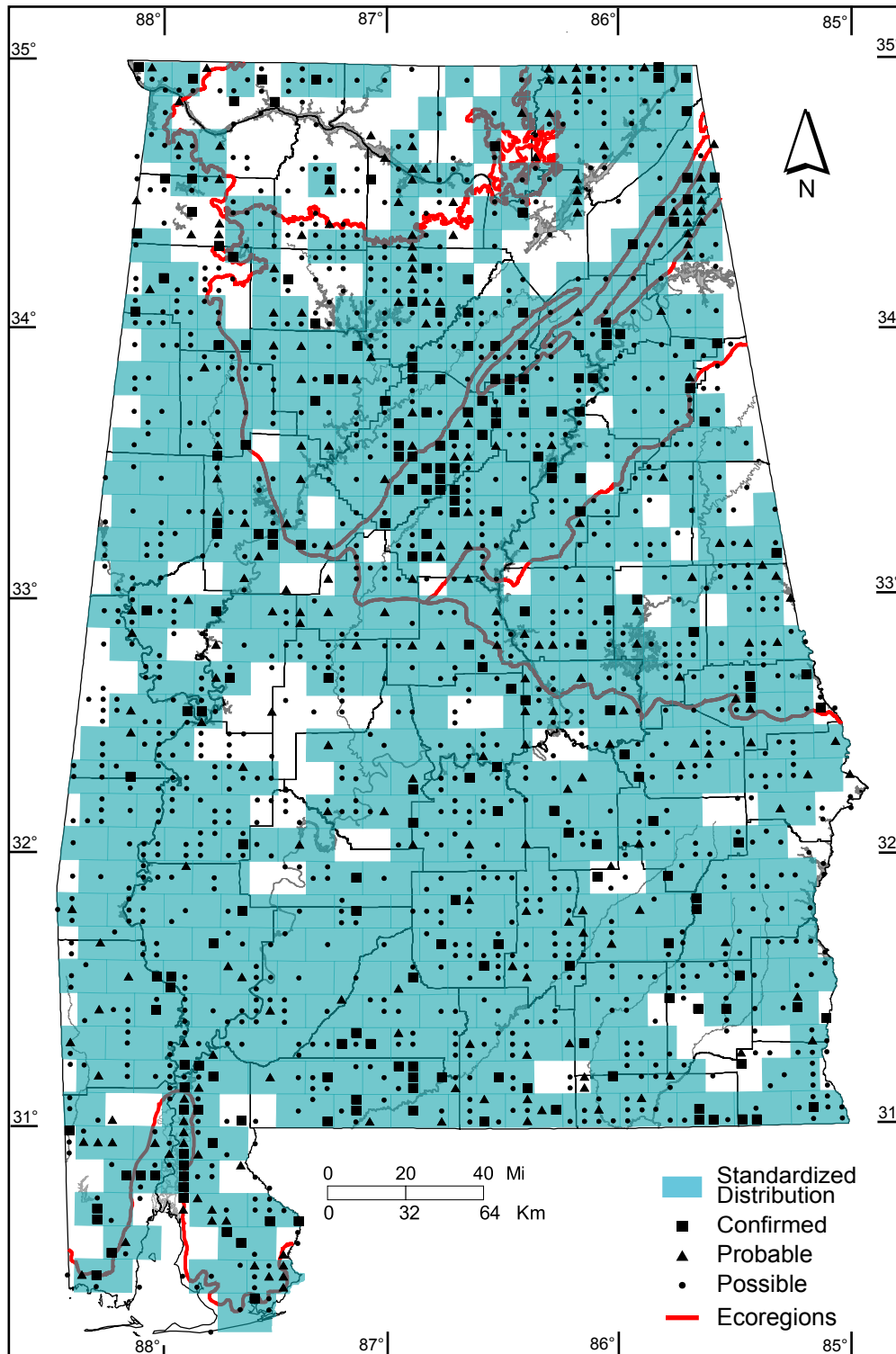
Southern Coastal Plain: 5 of 7 (71%)

Number of Blocks with Breeding Evidence

Total: 1573 of 5087 (31%)

Confirmed: 223 of 5087 (4%)

Safe Dates: March 15 - July 31



©Alabama Breeding Bird Atlas
All Rights Reserved