

Red-headed Woodpecker (*Melanerpes erythrocephalus*)

Number of Priority Blocks with Breeding Evidence

Total: 387 of 585 (66%)

Confirmed: 97 (25%)

Probable: 99 (26%)

Possible: 191 (49%)

Number of Priority Blocks in Ecoregions with Breeding Evidence

Interior Plateau: 27 of 52 (52%)

Southwestern Appalachians: 75 of 124 (60%)

Ridge and Valley: 50 of 72 (69%)

Piedmont: 46 of 76 (61%)

Southeastern Plains: 184 of 254 (72%)

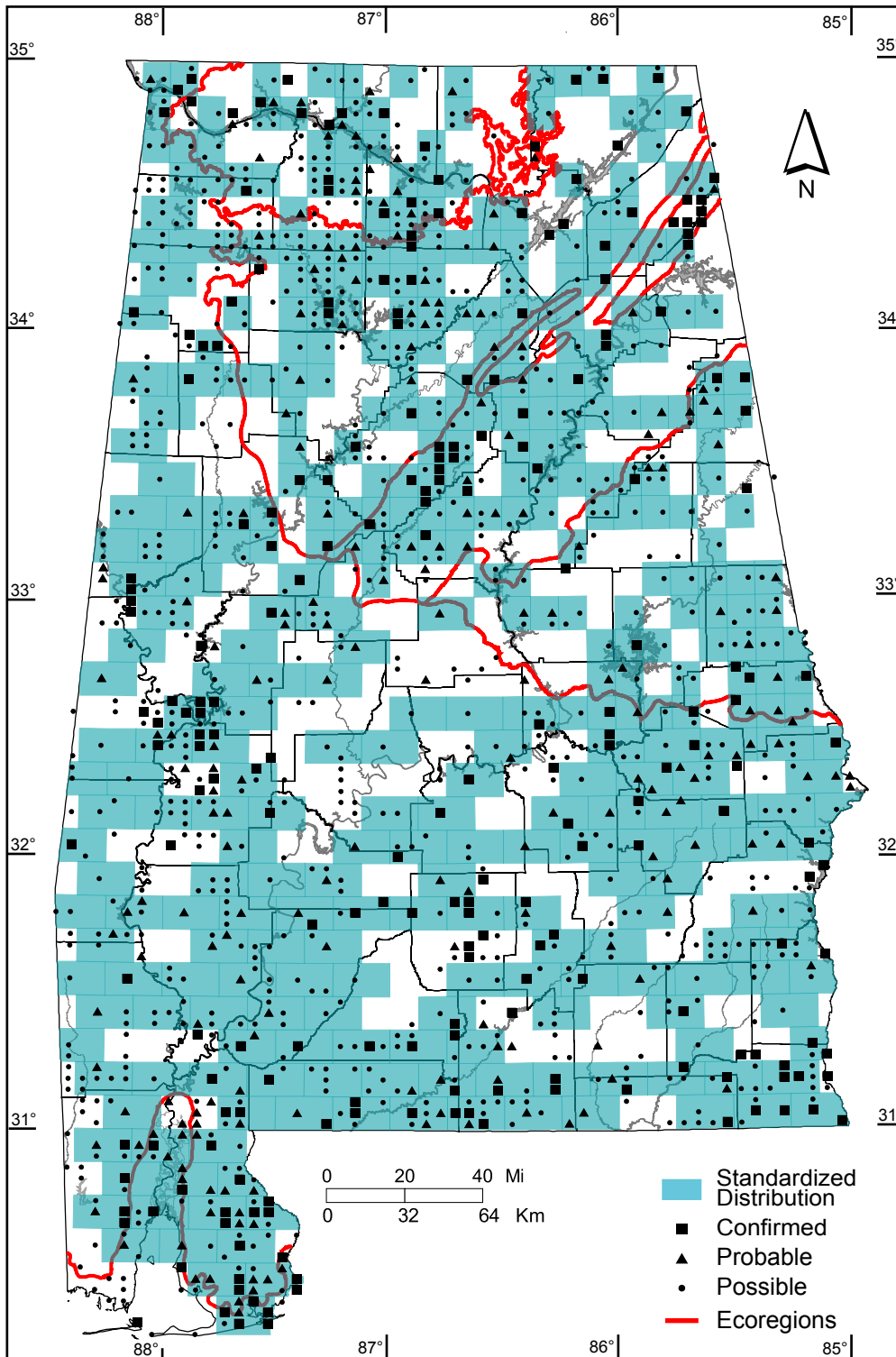
Southern Coastal Plain: 5 of 7 (71%)

Number of Blocks with Breeding Evidence

Total: 1240 of 5087 (24%)

Confirmed: 230 of 5087 (5%)

Safe Dates: May 1 - July 15



©Alabama Breeding Bird Atlas
All Rights Reserved