

Northern Rough-winged Swallow (*Stelgidopteryx serripennis*)

Number of Priority Blocks with Breeding Evidence

Total: 424 of 585 (72%)

Confirmed: 104 (25%)

Probable: 103 (24%)

Possible: 217 (51%)

Number of Priority Blocks in Ecoregions with Breeding Evidence

Interior Plateau: 38 of 52 (73%)

Southwestern Appalachians: 106 of 124 (85%)

Ridge and Valley: 55 of 72 (76%)

Piedmont: 54 of 76 (71%)

Southeastern Plains: 168 of 254 (66%)

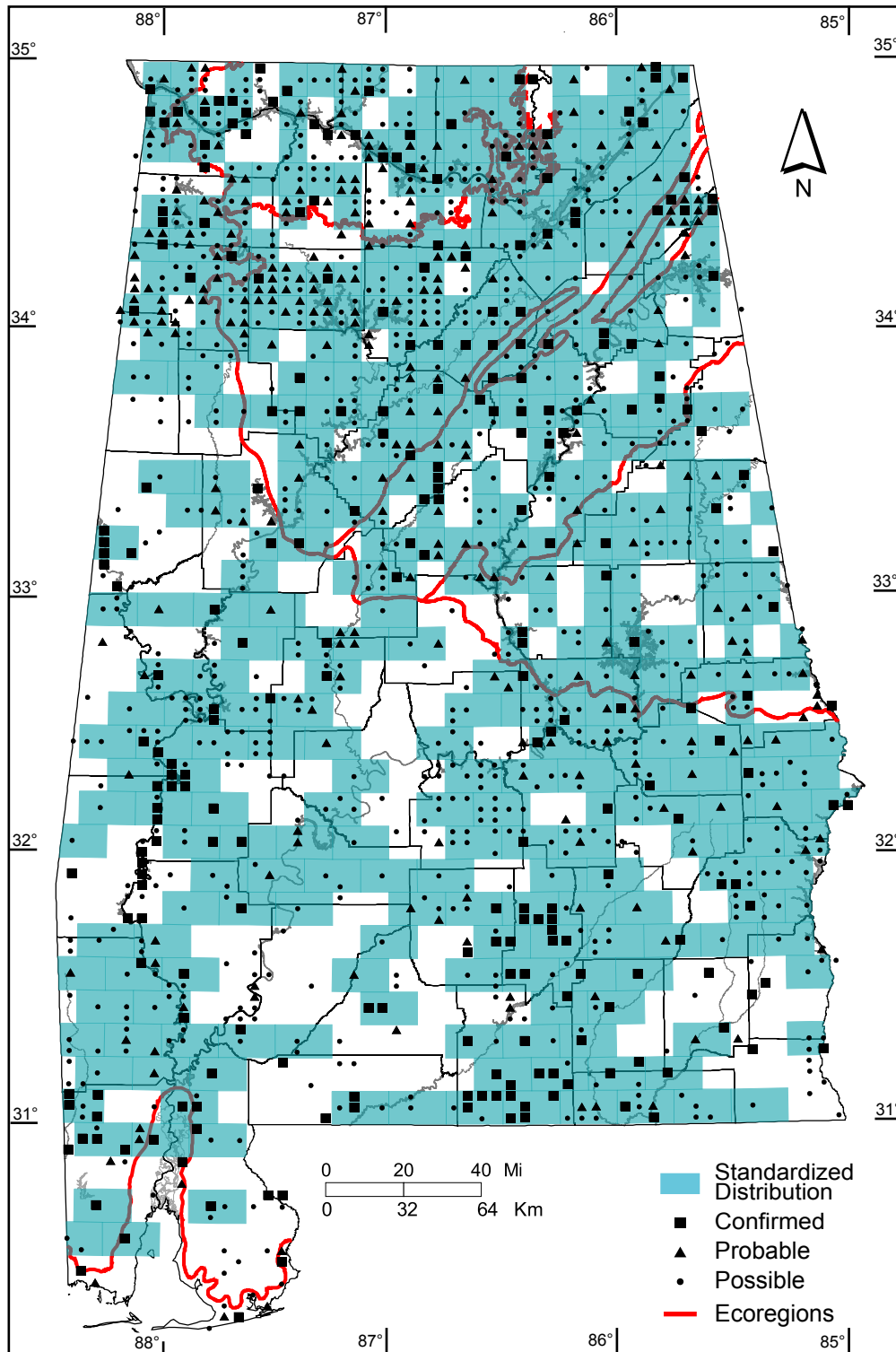
Southern Coastal Plain: 3 of 7 (43%)

Number of Blocks with Breeding Evidence

Total: 1290 of 5087 (25%)

Confirmed: 255 of 5087 (5%)

Safe Dates: May 15 - July 10



©Alabama Breeding Bird Atlas
All Rights Reserved