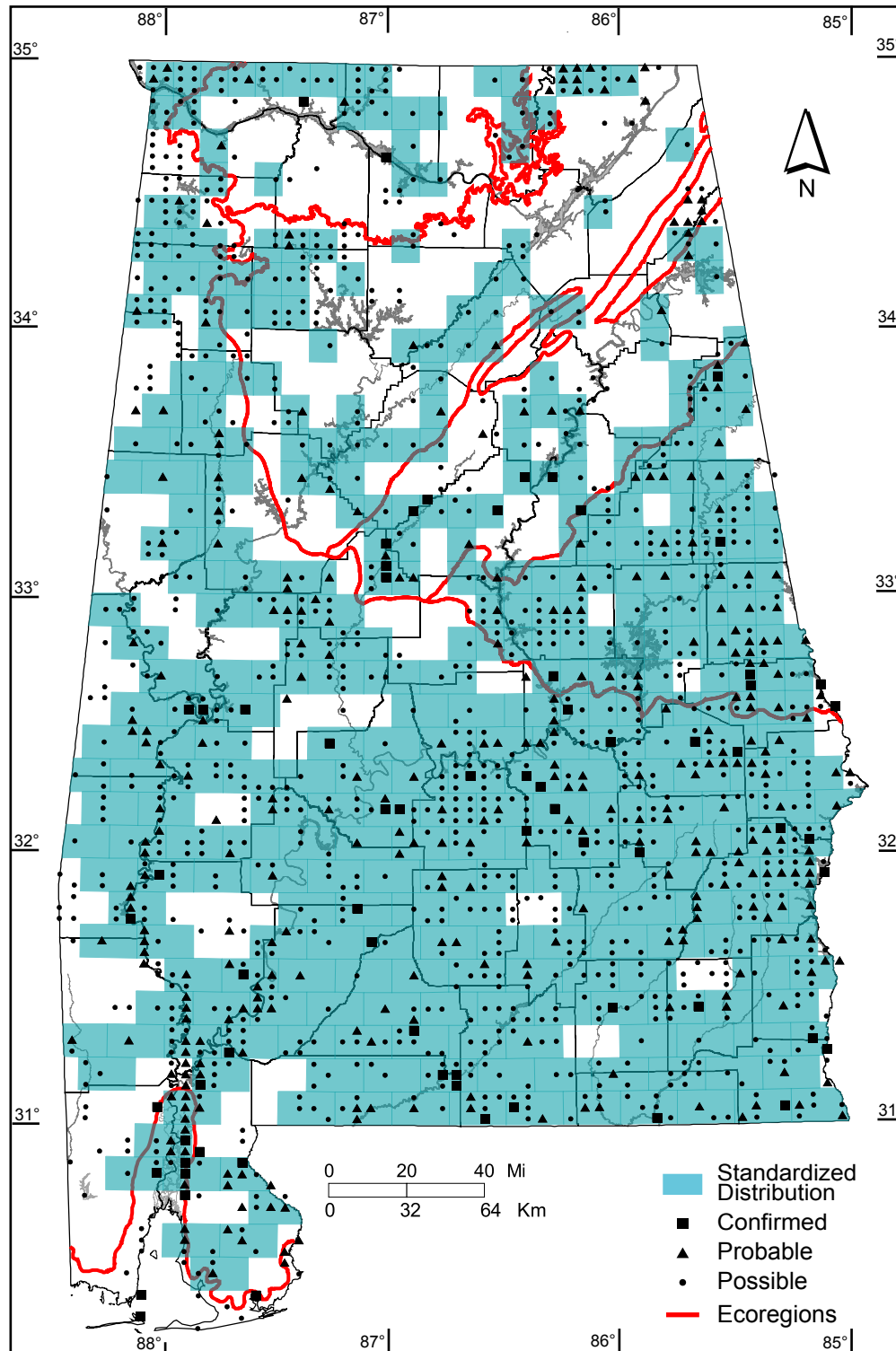


Northern Parula (*Parula americana*)



Number of Priority Blocks with Breeding Evidence

Total: 374 of 585 (64%)

Confirmed: 28 (8%)

Probable: 132 (35%)

Possible: 214 (57%)

Number of Priority Blocks in Ecoregions with Breeding Evidence

Interior Plateau: 21 of 52 (40%)

Southwestern Appalachians: 43 of 124 (35%)

Ridge and Valley: 31 of 72 (43%)

Piedmont: 72 of 76 (95%)

Southeastern Plains: 204 of 254 (80%)

Southern Coastal Plain: 3 of 7 (43%)

Number of Blocks with Breeding Evidence

Total: 1398 of 5087 (27%)

Confirmed: 68 of 5087 (1%)

Safe Dates: May 15 - July 10

