

Louisiana Waterthrush (*Seiurus motacilla*)

Number of Priority Blocks with Breeding Evidence

Total: 279 of 585 (48%)

Confirmed: 25 (9%)

Probable: 71 (25%)

Possible: 183 (66%)

Number of Priority Blocks in Ecoregions with Breeding Evidence

Interior Plateau: 17 of 52 (33%)

Southwestern Appalachians: 69 of 124 (56%)

Ridge and Valley: 37 of 72 (51%)

Piedmont: 46 of 76 (61%)

Southeastern Plains: 110 of 254 (43%)

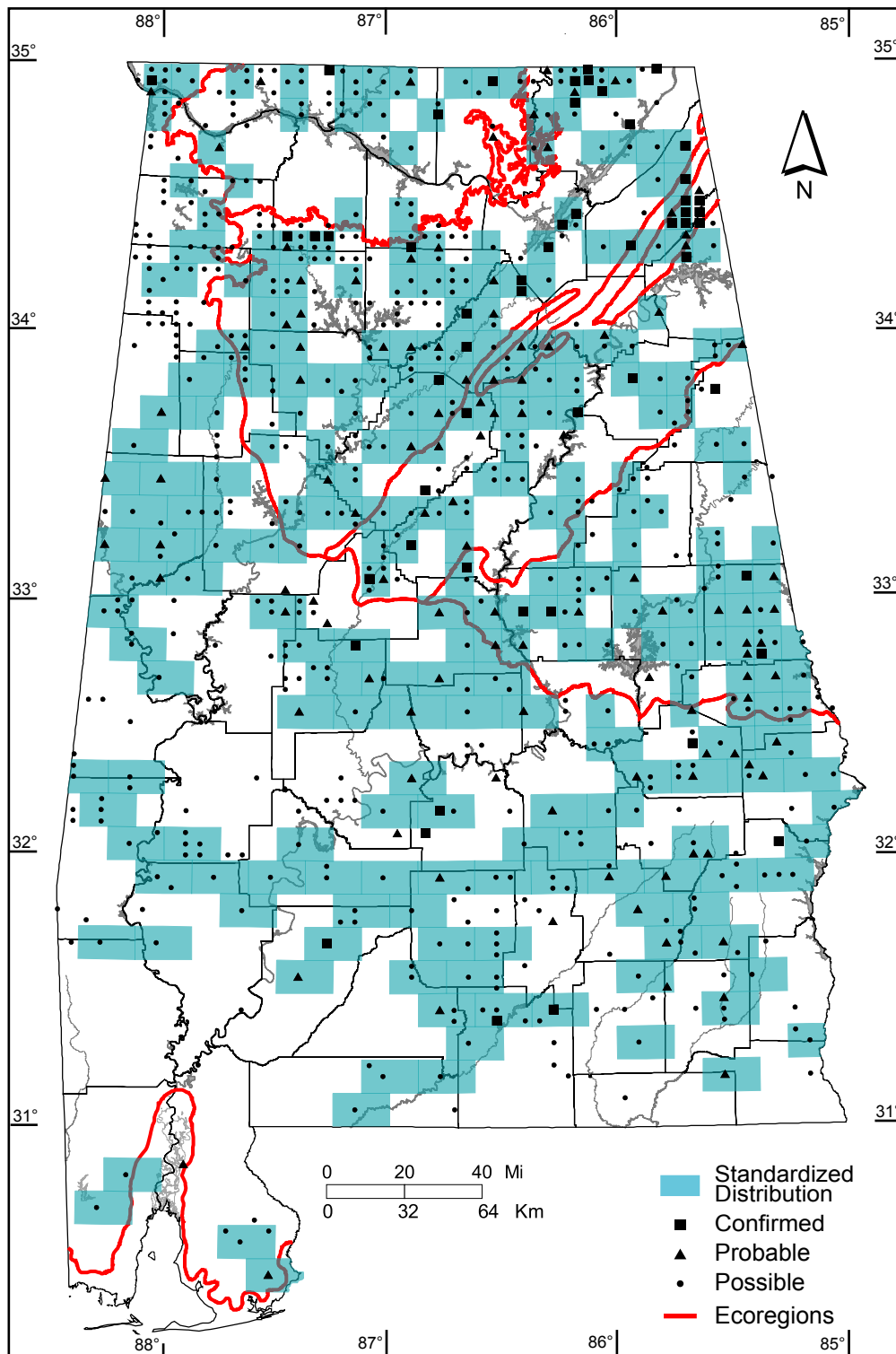
Southern Coastal Plain: 0 of 7 (0%)

Number of Blocks with Breeding Evidence

Total: 719 of 5087 (14%)

Confirmed: 54 of 5087 (1%)

Safe Dates: April 20 - July 10



©Alabama Breeding Bird Atlas
All Rights Reserved