

Gray Catbird (*Dumetella carolinensis*)

Number of Priority Blocks with Breeding Evidence

Total: 348 of 585 (59%)

Confirmed: 39 (11%)

Probable: 73 (21%)

Possible: 236 (68%)

Number of Priority Blocks in Ecoregions with Breeding Evidence

Interior Plateau: 21 of 52 (40%)

Southwestern Appalachians: 83 of 124 (67%)

Ridge and Valley: 45 of 72 (63%)

Piedmont: 58 of 76 (76%)

Southeastern Plains: 140 of 254 (55%)

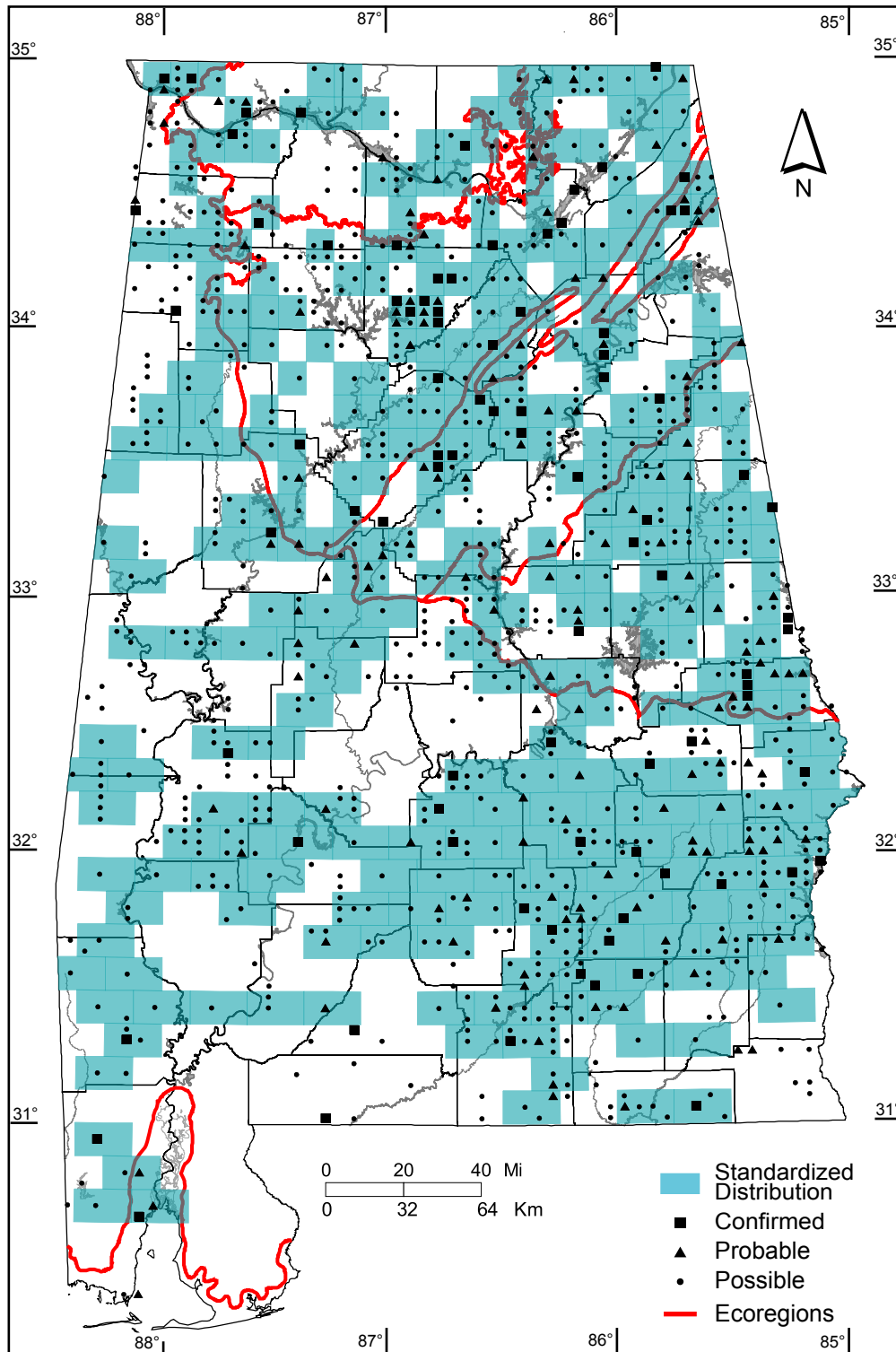
Southern Coastal Plain: 1 of 7 (14%)

Number of Blocks with Breeding Evidence

Total: 1012 of 5087 (20%)

Confirmed: 86 of 5087 (2%)

Safe Dates: May 15 - July 5



©Alabama Breeding Bird Atlas
All Rights Reserved