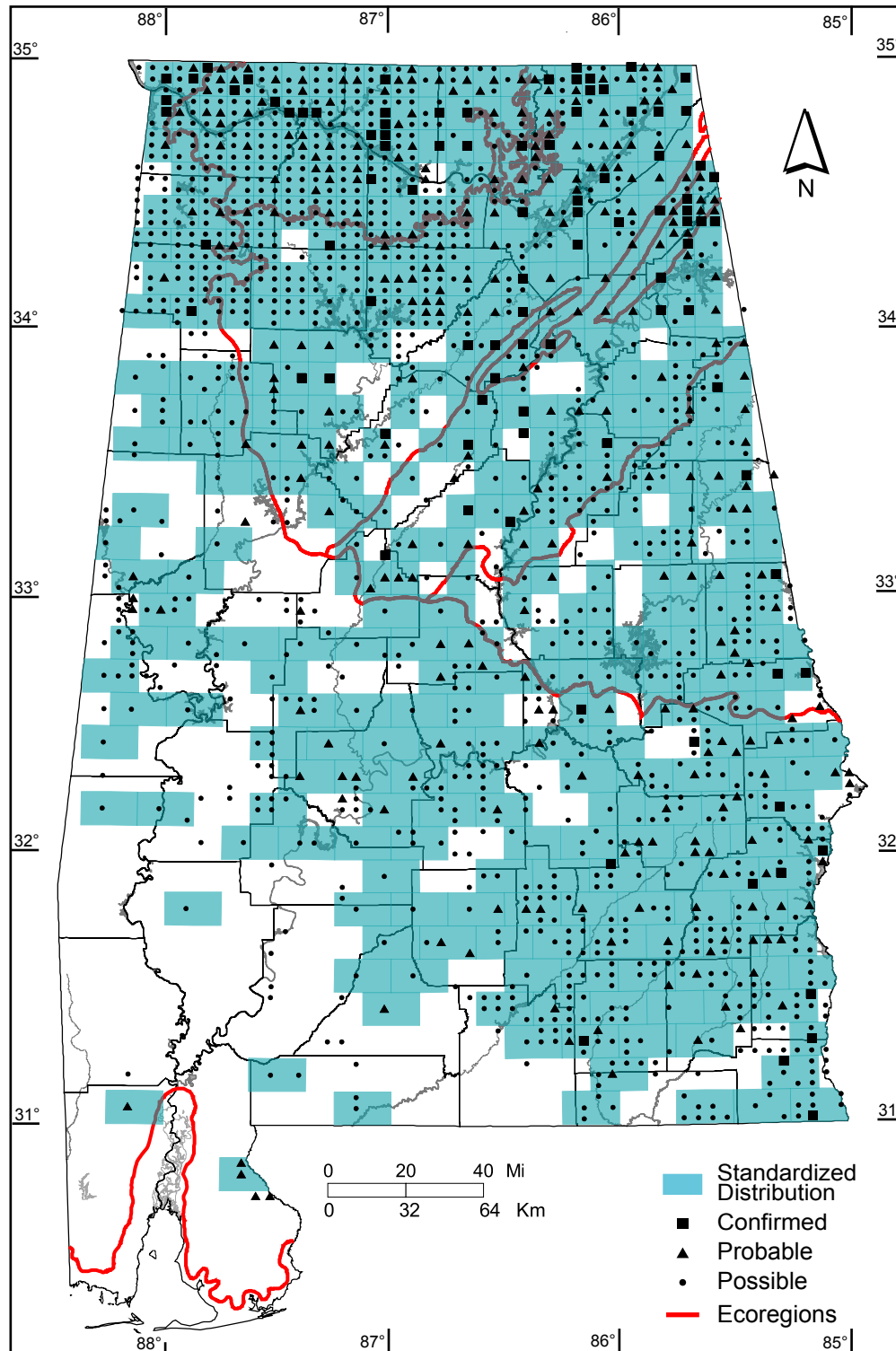


Field Sparrow (*Spizella pusilla*)



Number of Priority Blocks with Breeding Evidence

Total: 437 of 585 (75%)

Confirmed: 56 (13%)

Probable: 164 (37%)

Possible: 217 (50%)

Number of Priority Blocks in Ecoregions with Breeding Evidence

Interior Plateau: 51 of 52 (98%)

Southwestern Appalachians: 110 of 124 (89%)

Ridge and Valley: 60 of 72 (83%)

Piedmont: 65 of 76 (86%)

Southeastern Plains: 151 of 254 (59%)

Southern Coastal Plain: 0 of 7 (0%)

Number of Blocks with Breeding Evidence

Total: 1543 of 5087 (30%)

Confirmed: 95 of 5087 (2%)

Safe Dates: May 1 - July 31

