

Eastern Wood-Pewee (*Contopus virens*)

Number of Priority Blocks with Breeding Evidence

Total: 492 of 585 (84%)

Confirmed: 26 (5%)

Probable: 155 (32%)

Possible: 311 (63%)

Number of Priority Blocks in Ecoregions with Breeding Evidence

Interior Plateau: 51 of 52 (98%)

Southwestern Appalachians: 112 of 124 (90%)

Ridge and Valley: 50 of 72 (69%)

Piedmont: 67 of 76 (88%)

Southeastern Plains: 210 of 254 (83%)

Southern Coastal Plain: 2 of 7 (29%)

Number of Blocks with Breeding Evidence

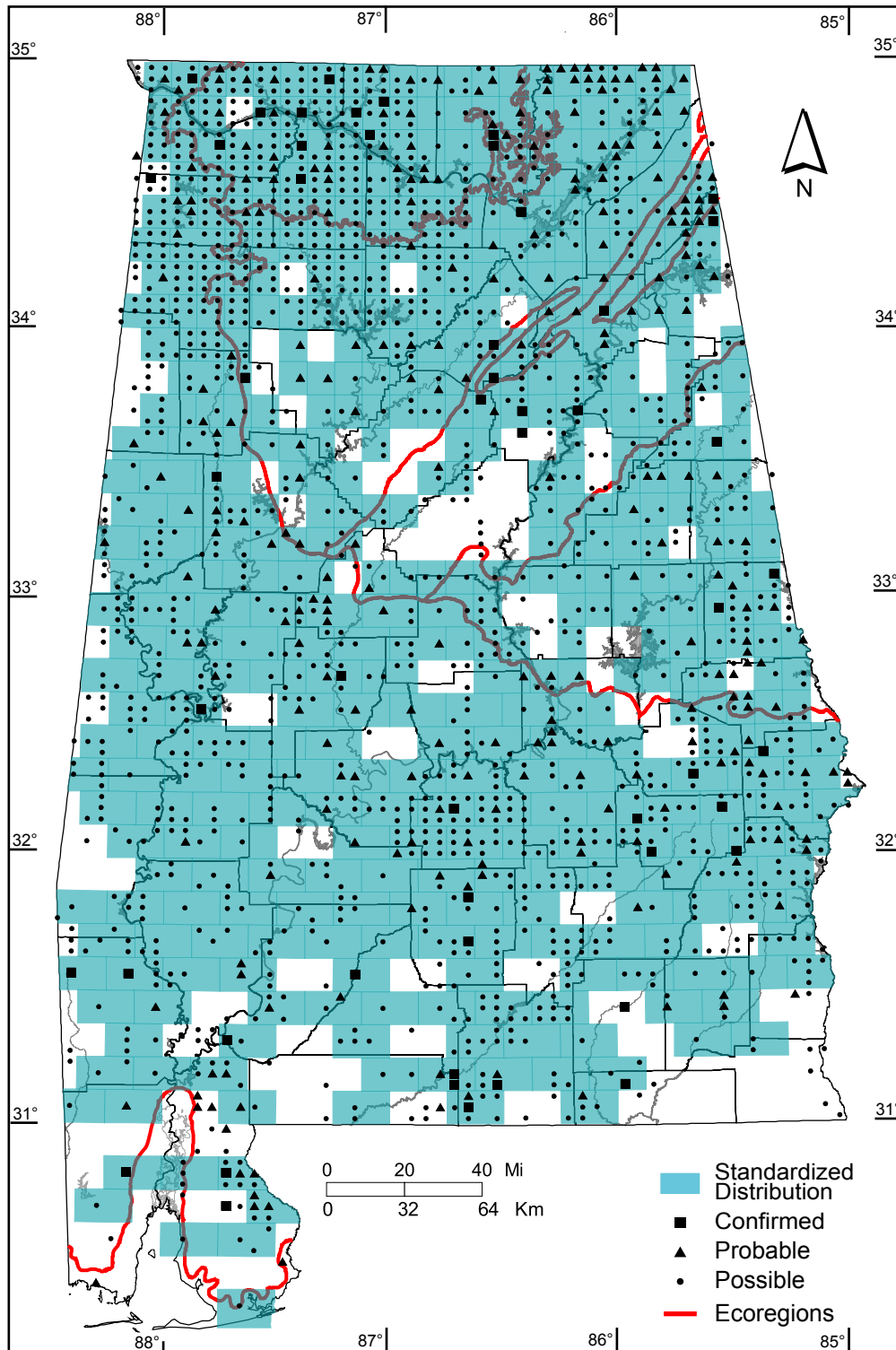
Total: 1771 of 5087 (35%)

Confirmed: 52 of 5087 (1%)

Number of Blocks with Nonbreeding Records

Observed: 0 of 5087 (0%)

Safe Dates: May 20 - July 15



©Alabama Breeding Bird Atlas
All Rights Reserved