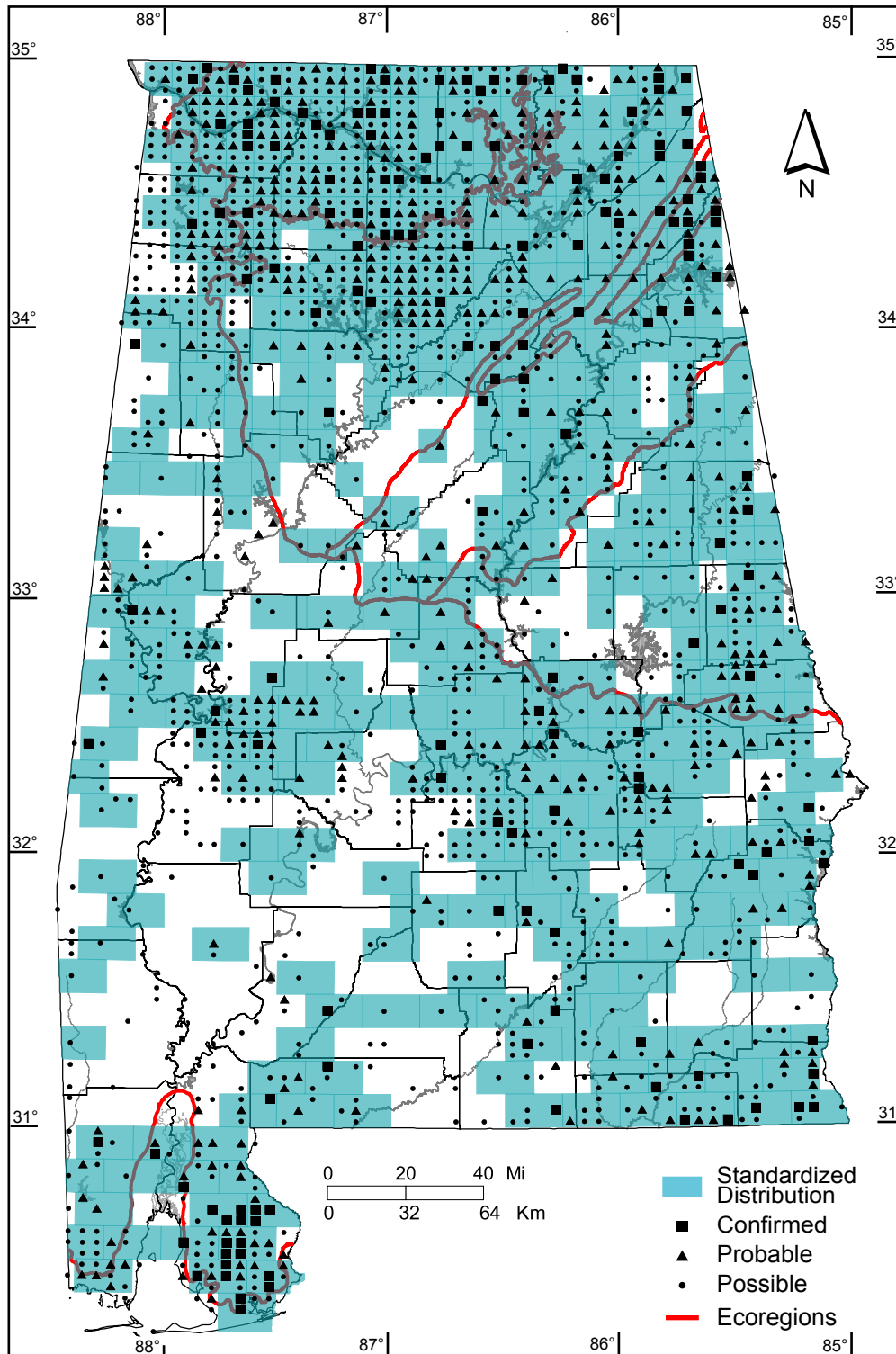


Eastern Meadowlark (*Sturnella magna*)



Number of Priority Blocks with Breeding Evidence

Total: 448 of 585 (77%)

Confirmed: 83 (18%)

Probable: 169 (38%)

Possible: 196 (44%)

Number of Priority Blocks in Ecoregions with Breeding Evidence

Interior Plateau: 52 of 52 (100%)

Southwestern Appalachians: 107 of 124 (86%)

Ridge and Valley: 59 of 72 (82%)

Piedmont: 58 of 76 (76%)

Southeastern Plains: 167 of 254 (66%)

Southern Coastal Plain: 5 of 7 (71%)

Number of Blocks with Breeding Evidence

Total: 1715 of 5087 (34%)

Confirmed: 168 of 5087 (3%)

Safe Dates: May 1 - July 31

