

# Chuck-will's-widow (*Caprimulgus carolinensis*)

## Number of Priority Blocks with Breeding Evidence

**Total:** 505 of 585 (86%)

**Confirmed:** 7 (1%)

**Probable:** 203 (40%)

**Possible:** 295 (59%)

## Number of Priority Blocks in Ecoregions with Breeding Evidence

**Interior Plateau:** 49 of 52 (94%)

**Southwestern Appalachians:** 106 of 124 (85%)

**Ridge and Valley:** 49 of 72 (68%)

**Piedmont:** 67 of 76 (88%)

**Southeastern Plains:** 229 of 254 (90%)

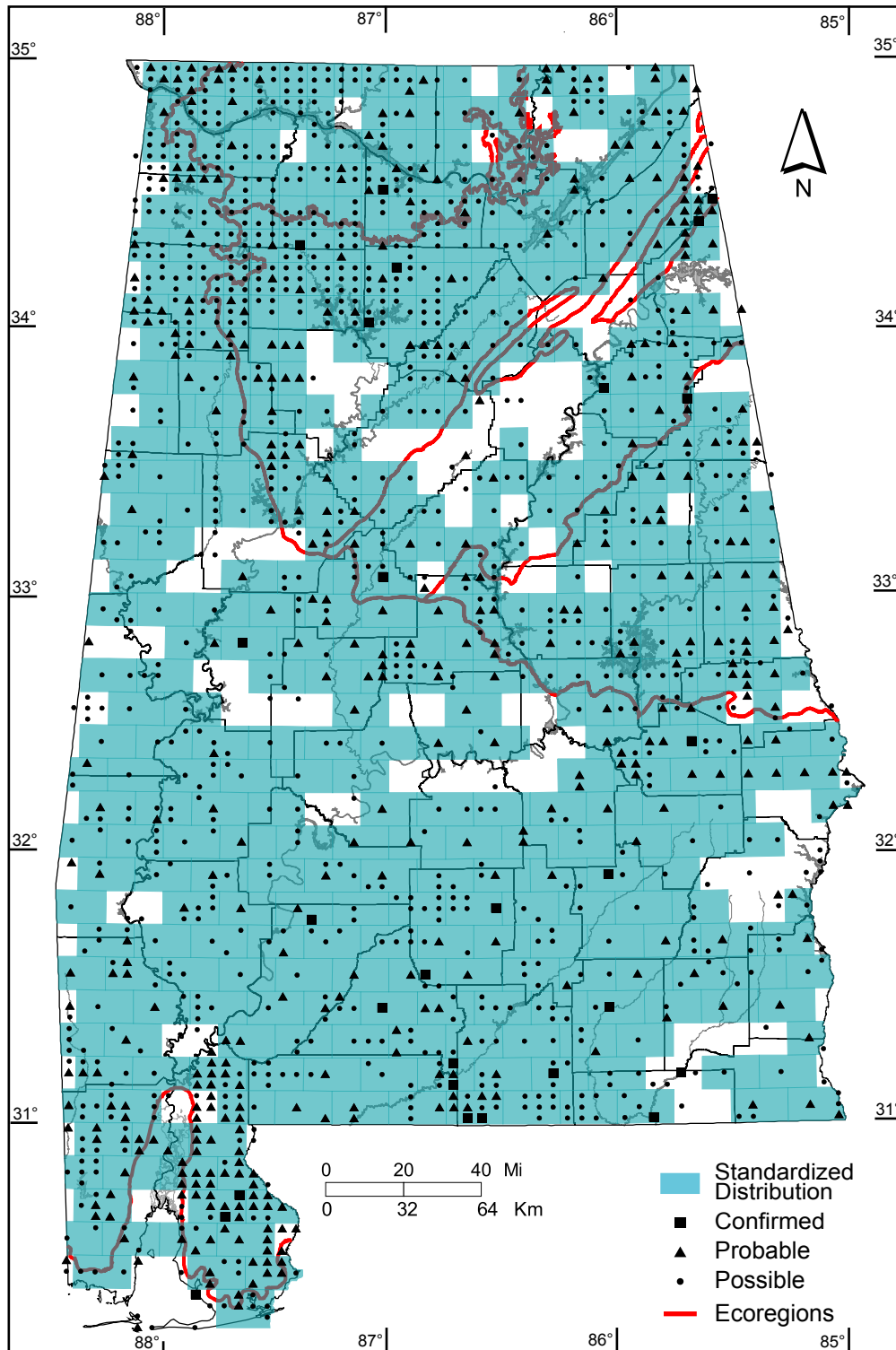
**Southern Coastal Plain:** 5 of 7 (71%)

## Number of Blocks with Breeding Evidence

**Total:** 1433 of 5087 (28%)

**Confirmed:** 27 of 5087 (1%)

**Safe Dates:** May 1 - July 31



©Alabama Breeding Bird Atlas  
All Rights Reserved