

# Chimney Swift (*Chaetura pelagica*)

## Number of Priority Blocks with Breeding Evidence

**Total:** 558 of 585 (95%)

**Confirmed:** 58 (11%)

**Probable:** 191 (34%)

**Possible:** 309 (55%)

## Number of Priority Blocks in Ecoregions with Breeding Evidence

**Interior Plateau:** 51 of 52 (98%)

**Southwestern Appalachians:** 118 of 124 (95%)

**Ridge and Valley:** 70 of 72 (97%)

**Piedmont:** 71 of 76 (93%)

**Southeastern Plains:** 241 of 254 (95%)

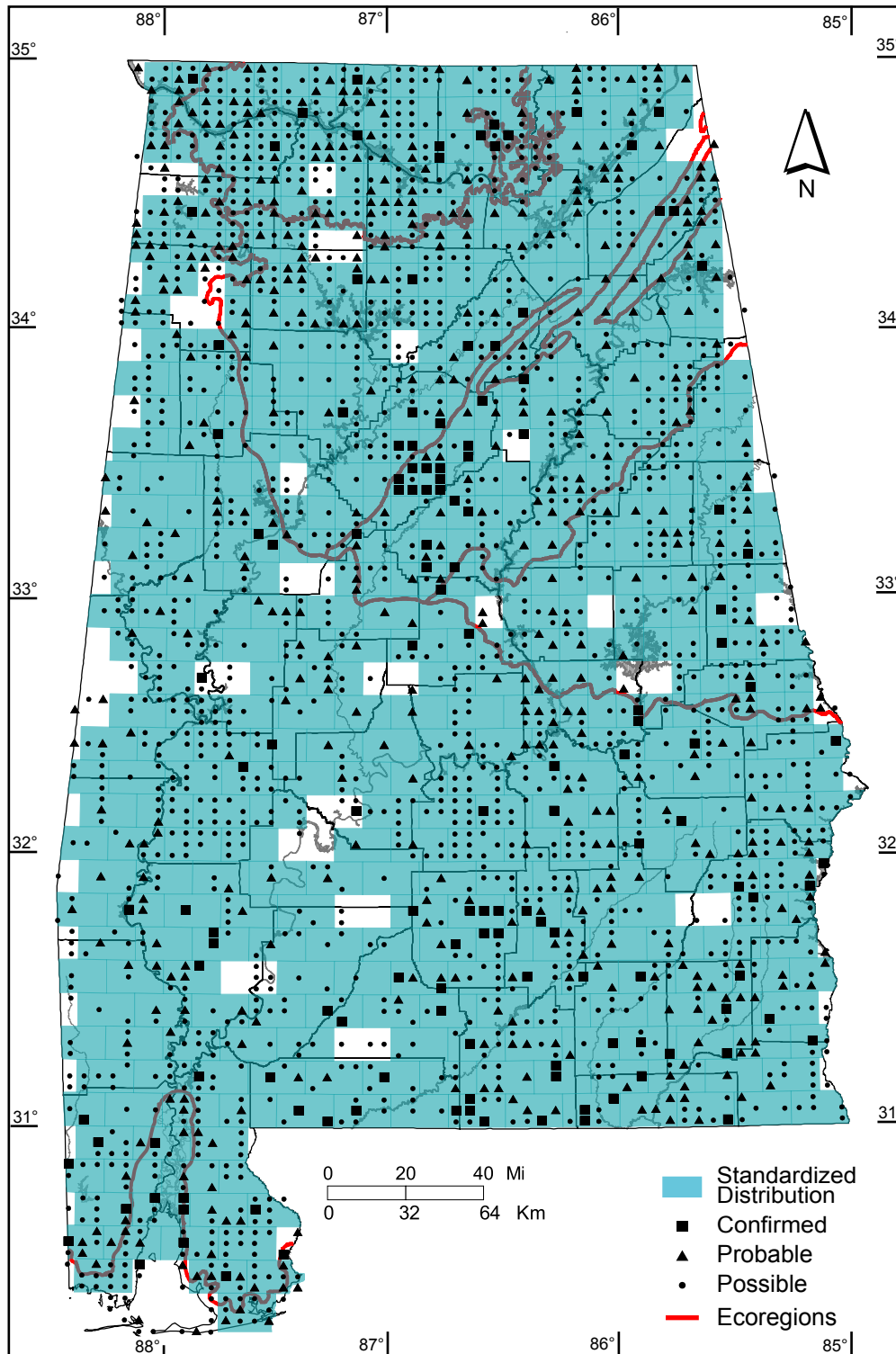
**Southern Coastal Plain:** 7 of 7 (100%)

## Number of Blocks with Breeding Evidence

**Total:** 2135 of 5087 (42%)

**Confirmed:** 142 of 5087 (3%)

**Safe Dates:** May 15 - July 15



©Alabama Breeding Bird Atlas  
All Rights Reserved