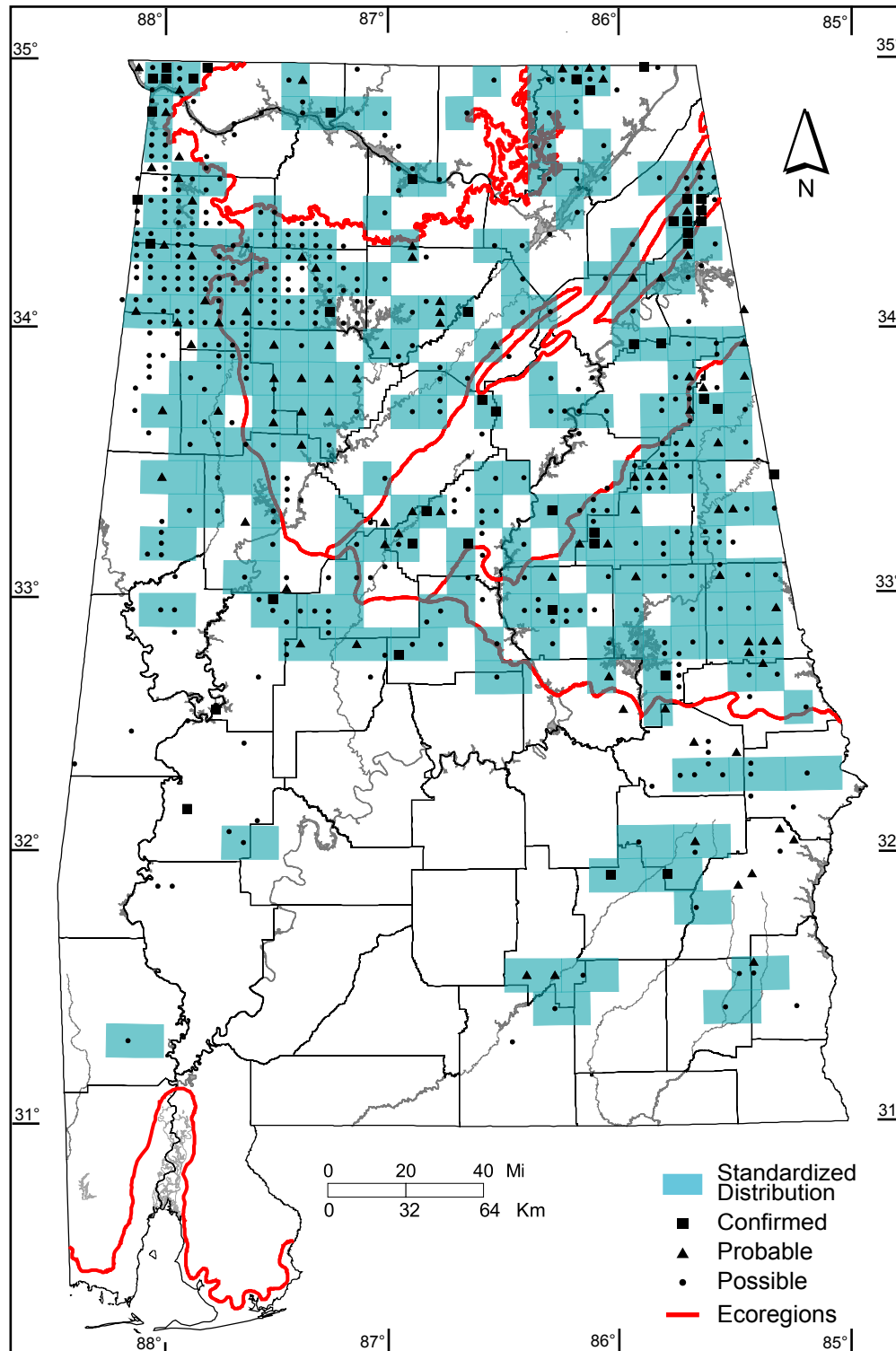


Black-and-white Warbler (*Mniotilta varia*)



Number of Priority Blocks with Breeding Evidence

Total: 213 of 585 (36%)

Confirmed: 19 (9%)

Probable: 51 (24%)

Possible: 143 (67%)

Number of Priority Blocks in Ecoregions with Breeding Evidence

Interior Plateau: 10 of 52 (19%)

Southwestern Appalachians: 64 of 124 (52%)

Ridge and Valley: 32 of 72 (44%)

Piedmont: 55 of 76 (72%)

Southeastern Plains: 52 of 254 (20%)

Southern Coastal Plain: 0 of 7 (0%)

Number of Blocks with Breeding Evidence

Total: 567 of 5087 (11%)

Confirmed: 44 of 5087 (1%)

Safe Dates: May 10 - July 10

