

# American Redstart (*Setophaga ruticilla*)

## Number of Priority Blocks with Breeding Evidence

**Total:** 79 of 585 (14%)

**Confirmed:** 6 (8%)

**Probable:** 23 (29%)

**Possible:** 50 (63%)

## Number of Priority Blocks in Ecoregions with Breeding Evidence

**Interior Plateau:** 2 of 52 (4%)

**Southwestern Appalachians:** 9 of 124 (7%)

**Ridge and Valley:** 3 of 72 (4%)

**Piedmont:** 5 of 76 (7%)

**Southeastern Plains:** 58 of 254 (23%)

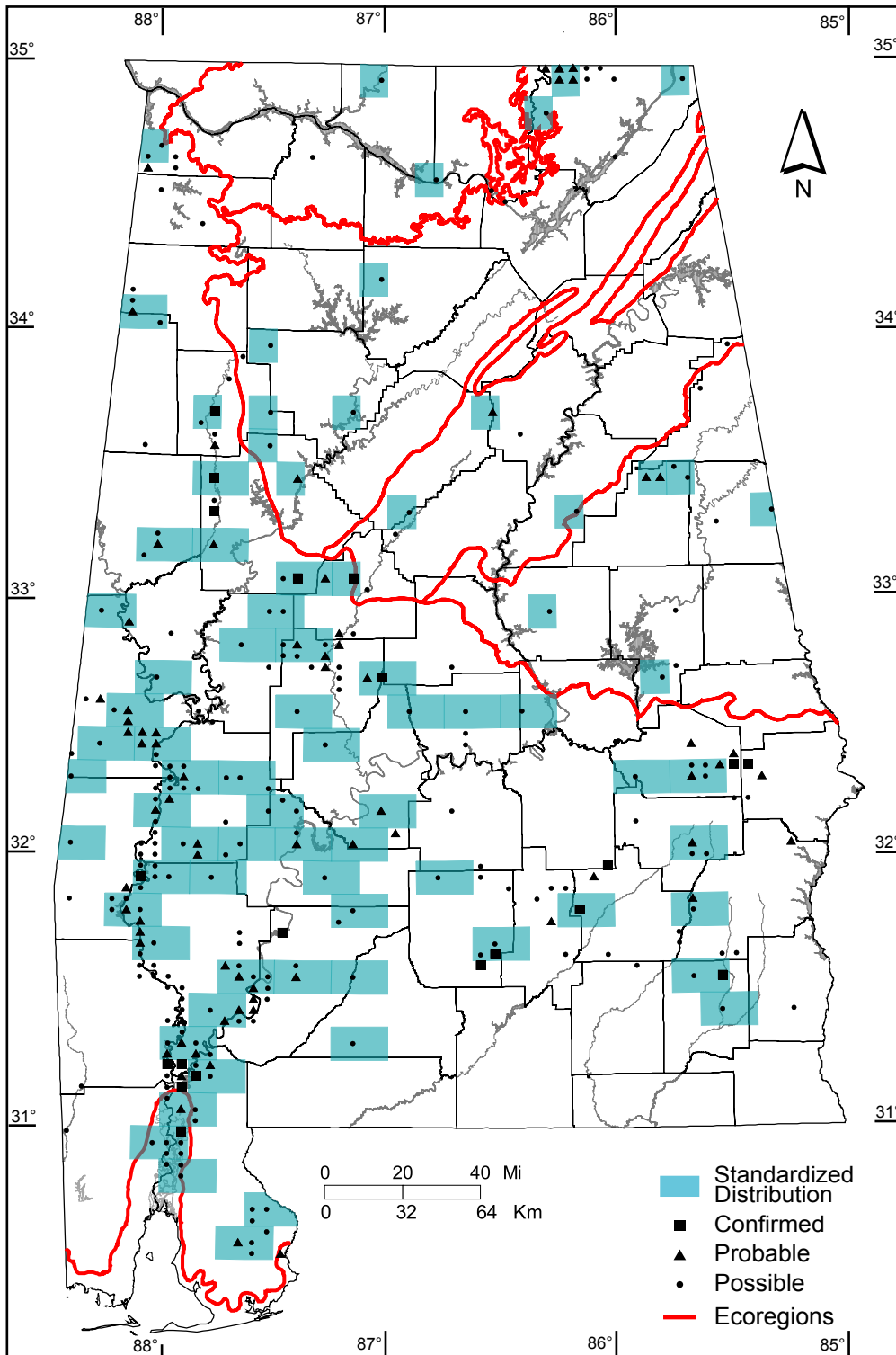
**Southern Coastal Plain:** 2 of 7 (29%)

## Number of Blocks with Breeding Evidence

**Total:** 297 of 5087 (6%)

**Confirmed:** 20 of 5087 (<1%)

**Safe Dates:** June 1 - July 5



©Alabama Breeding Bird Atlas  
All Rights Reserved