

Eastern Towhee (*Pipilo erythrophthalmus*)

Number of Priority Blocks with Breeding Evidence

Total: 584 of 585 (100%)

Confirmed: 92 (16%)

Probable: 417 (71%)

Possible: 75 (13%)

Number of Priority Blocks in Ecoregions with Breeding Evidence

Interior Plateau: 52 of 52 (100%)

Southwestern Appalachians: 124 of 124 (100%)

Ridge and Valley: 72 of 72 (100%)

Piedmont: 76 of 76 (100%)

Southeastern Plains: 253 of 254 (100%)

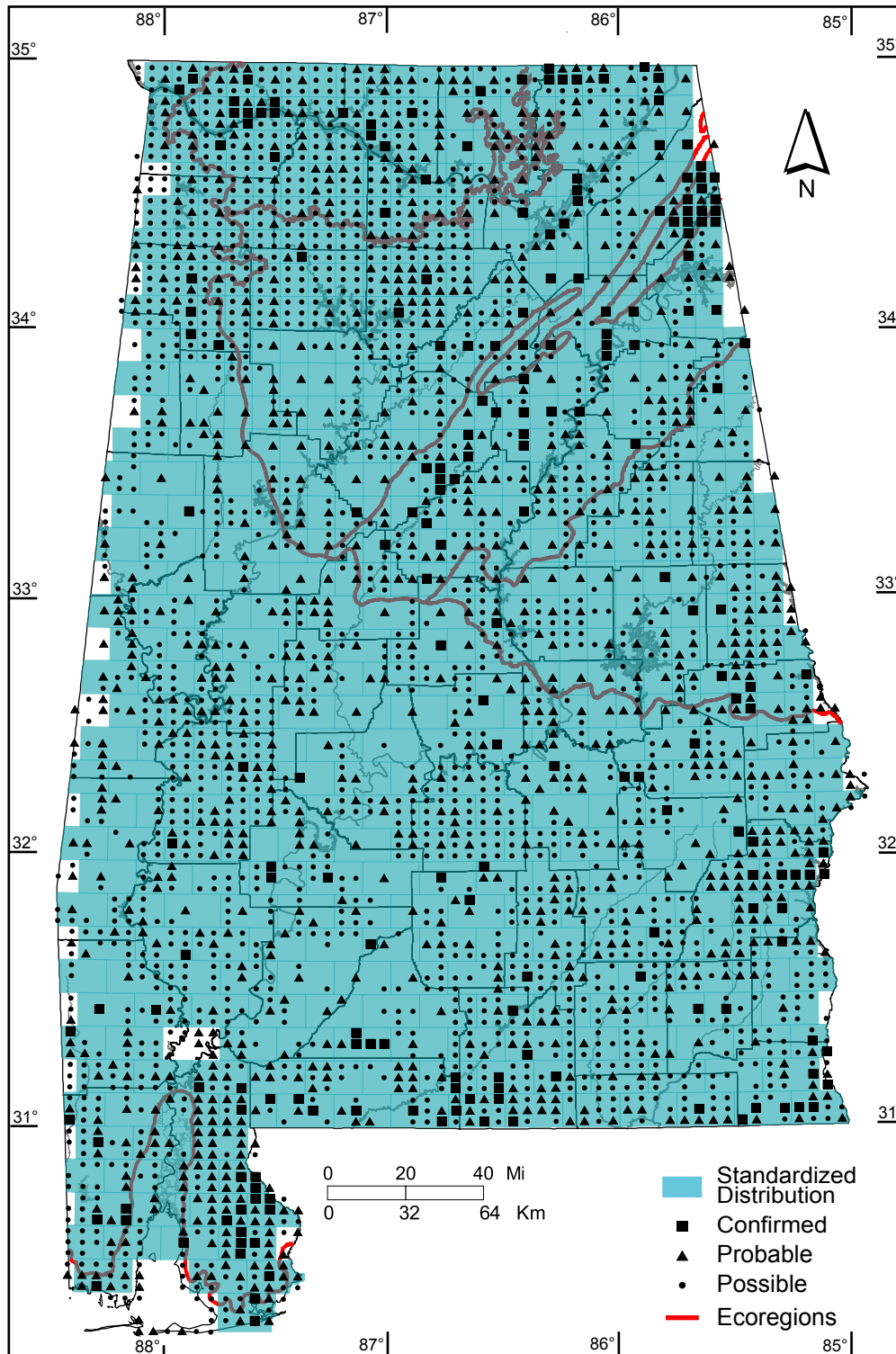
Southern Coastal Plain: 7 of 7 (100%)

Number of Blocks with Breeding Evidence

Total: 3058 of 5087 (60%)

Confirmed: 208 of 5087 (4%)

Safe Dates: May 1 - August 15



©Alabama Breeding Bird Atlas
All Rights Reserved

Bachman's Sparrow (*Aimophila aestivalis*)

Number of Priority Blocks with Breeding Evidence

Total: 30 of 585 (5%)

Confirmed: 3 (10%)

Probable: 13 (43%)

Possible: 14 (47%)

Number of Priority Blocks in Ecoregions with Breeding Evidence

Interior Plateau: 1 of 52 (2%)

Southwestern Appalachians: 0 of 124 (0%)

Ridge and Valley: 0 of 72 (0%)

Piedmont: 3 of 76 (4%)

Southeastern Plains: 26 of 254 (10%)

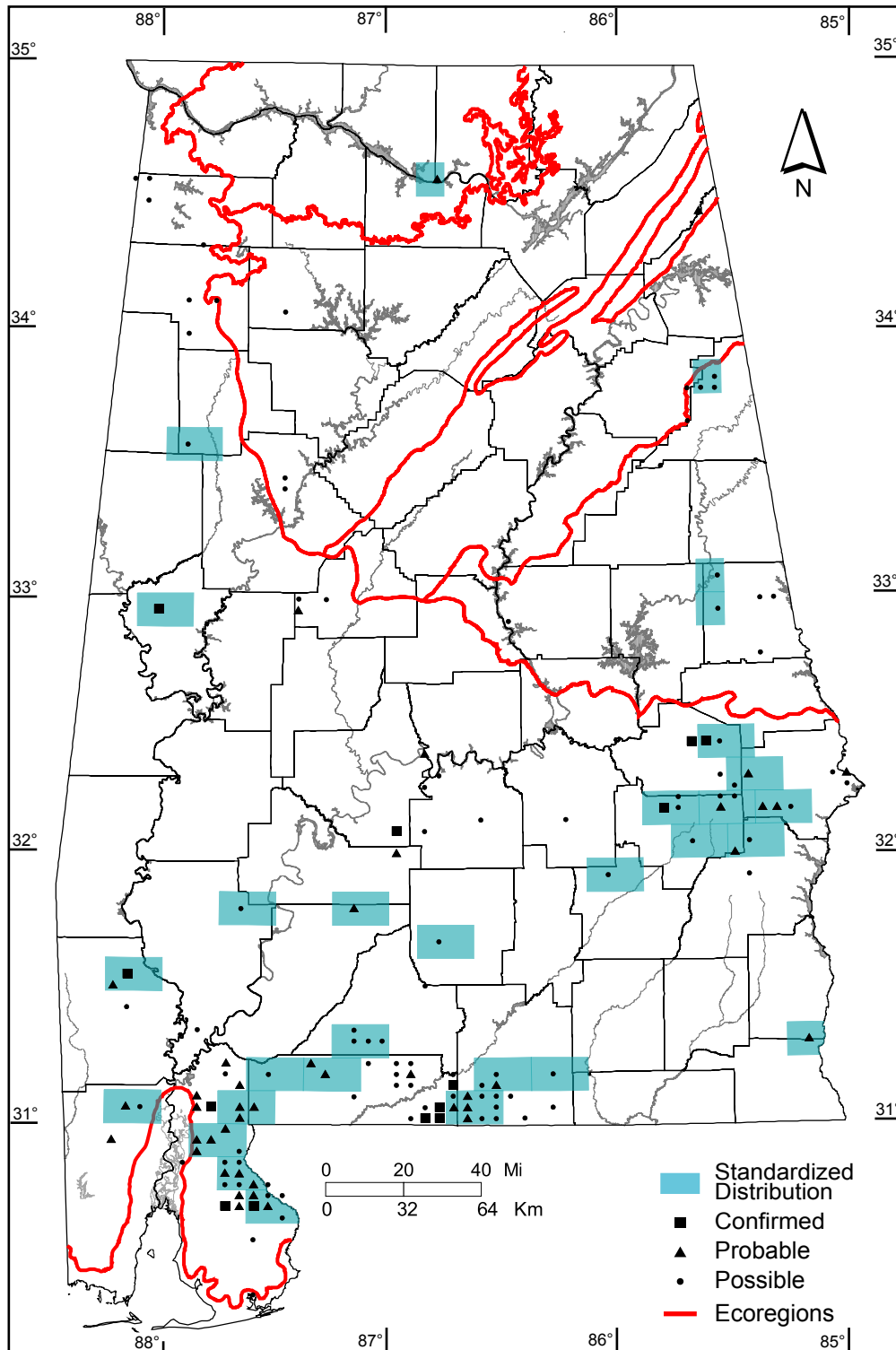
Southern Coastal Plain: 0 of 7 (0%)

Number of Blocks with Breeding Evidence

Total: 145 of 5087 (3%)

Confirmed: 13 of 5087 (<1%)

Safe Dates: April 15 - July 25



©Alabama Breeding Bird Atlas
All Rights Reserved

Chipping Sparrow (*Spizella passerina*)

Number of Priority Blocks with Breeding Evidence

Total: 432 of 585 (74%)

Confirmed: 123 (29%)

Probable: 166 (38%)

Possible: 143 (33%)

Number of Priority Blocks in Ecoregions with Breeding Evidence

Interior Plateau: 52 of 52 (100%)

Southwestern Appalachians: 123 of 124 (99%)

Ridge and Valley: 71 of 72 (99%)

Piedmont: 75 of 76 (99%)

Southeastern Plains: 111 of 254 (44%)

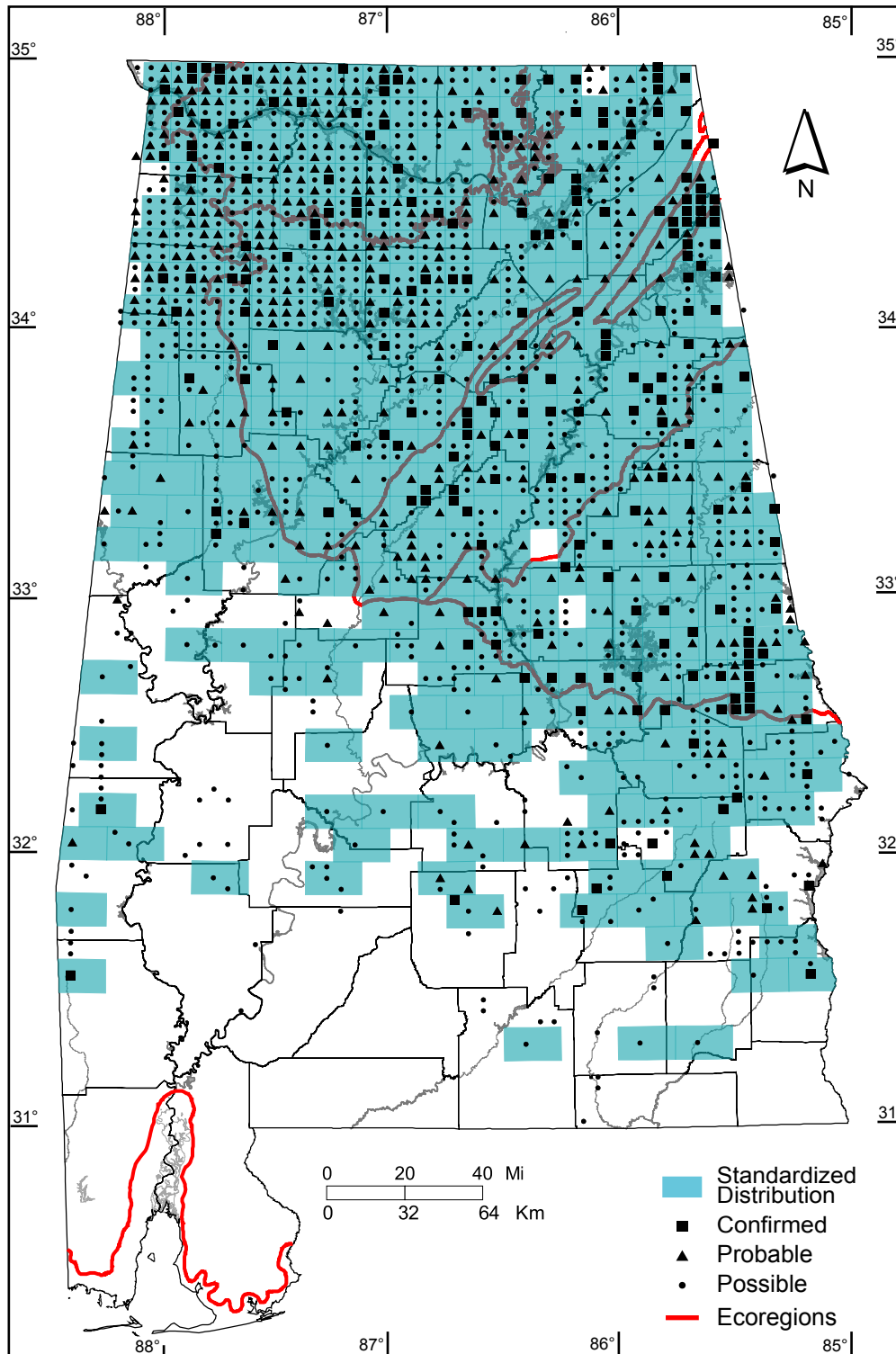
Southern Coastal Plain: 0 of 7 (0%)

Number of Blocks with Breeding Evidence

Total: 1537 of 5087 (30%)

Confirmed: 225 of 5087 (4%)

Safe Dates: May 1 - July 31



©Alabama Breeding Bird Atlas
All Rights Reserved

Field Sparrow (*Spizella pusilla*)

Number of Priority Blocks with Breeding Evidence

Total: 437 of 585 (75%)

Confirmed: 56 (13%)

Probable: 164 (37%)

Possible: 217 (50%)

Number of Priority Blocks in Ecoregions with Breeding Evidence

Interior Plateau: 51 of 52 (98%)

Southwestern Appalachians: 110 of 124 (89%)

Ridge and Valley: 60 of 72 (83%)

Piedmont: 65 of 76 (86%)

Southeastern Plains: 151 of 254 (59%)

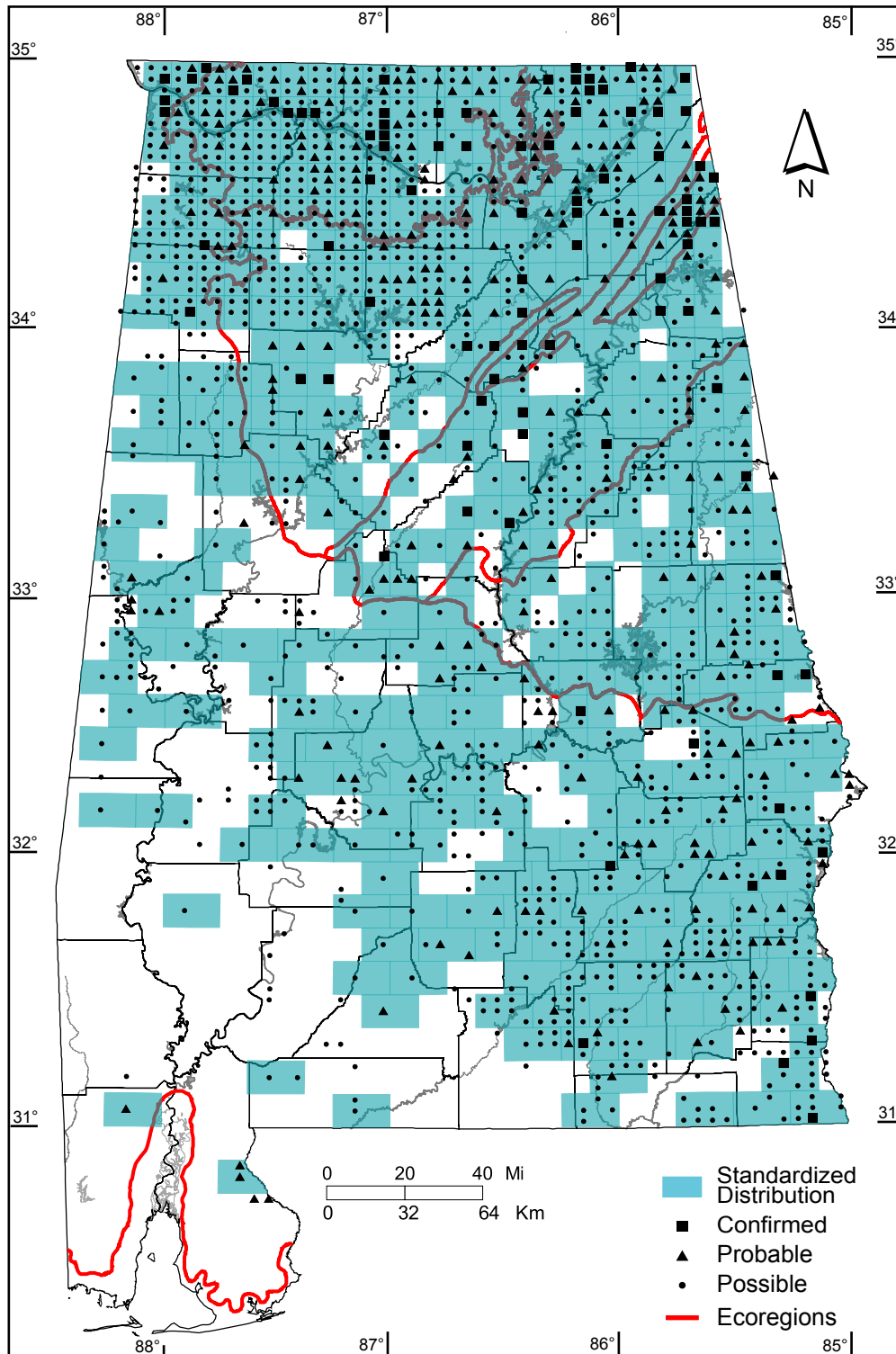
Southern Coastal Plain: 0 of 7 (0%)

Number of Blocks with Breeding Evidence

Total: 1543 of 5087 (30%)

Confirmed: 95 of 5087 (2%)

Safe Dates: May 1 - July 31



©Alabama Breeding Bird Atlas
All Rights Reserved

Lark Sparrow (*Chondestes grammacus*)

Number of Priority Blocks with Breeding Evidence

Total: 23 of 585 (4%)

Confirmed: 5 (22%)

Probable: 5 (22%)

Possible: 13 (56%)

Number of Priority Blocks in Ecoregions with Breeding Evidence

Interior Plateau: 13 of 52 (25%)

Southwestern Appalachians: 1 of 124 (1%)

Ridge and Valley: 1 of 72 (1%)

Piedmont: 0 of 76 (0%)

Southeastern Plains: 8 of 254 (3%)

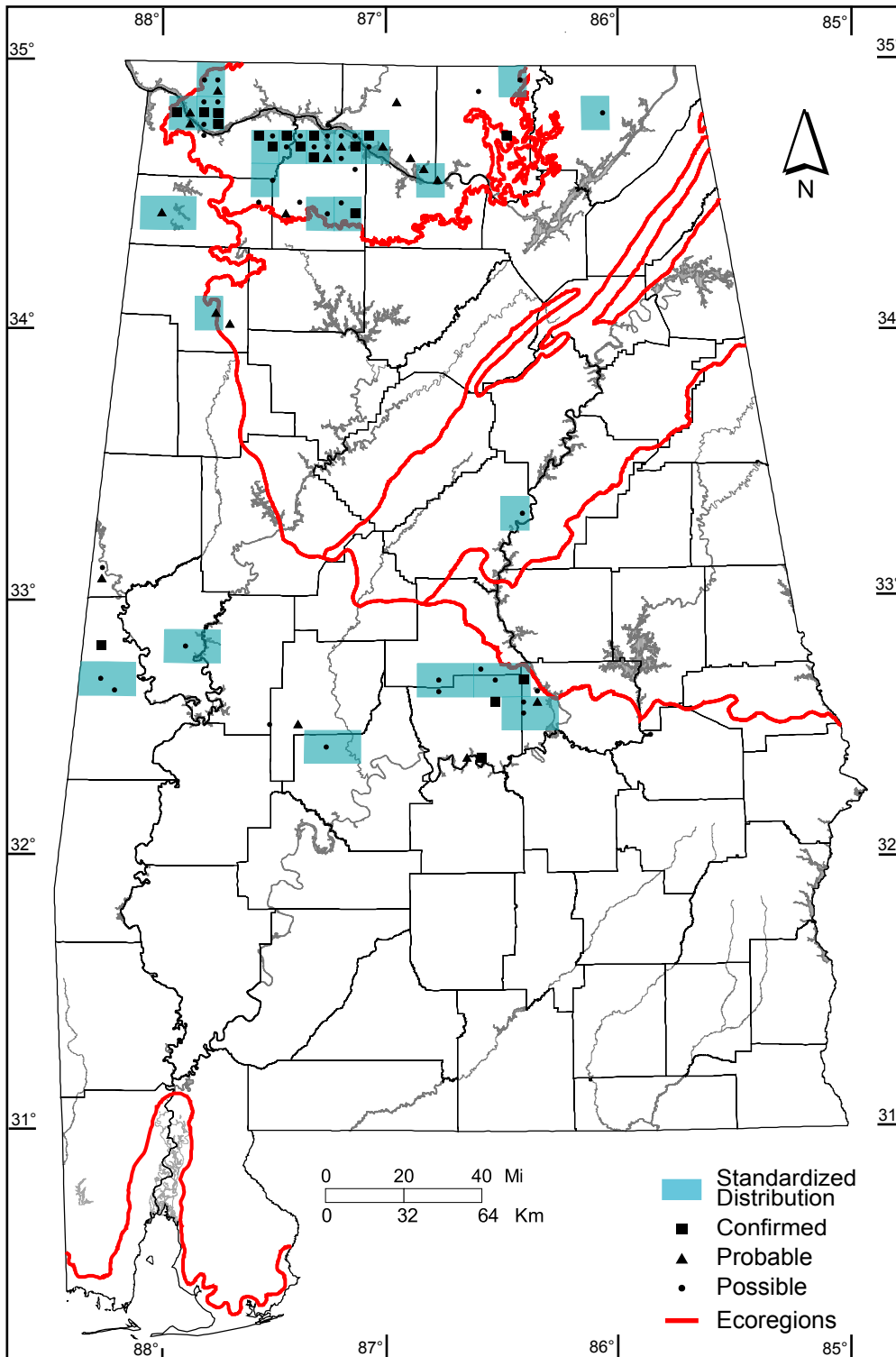
Southern Coastal Plain: 0 of 7 (0%)

Number of Blocks with Breeding Evidence

Total: 79 of 5087 (2%)

Confirmed: 18 of 5087 (<1%)

Safe Dates: May 25 - July 20



©Alabama Breeding Bird Atlas
All Rights Reserved

Grasshopper Sparrow (*Ammodramus savannarum*)

Number of Priority Blocks with Breeding Evidence

Total: 103 of 585 (18%)

Confirmed: 11 (11%)

Probable: 25 (24%)

Possible: 67 (65%)

Number of Priority Blocks in Ecoregions with Breeding Evidence

Interior Plateau: 37 of 52 (71%)

Southwestern Appalachians: 38 of 124 (31%)

Ridge and Valley: 15 of 72 (21%)

Piedmont: 8 of 76 (11%)

Southeastern Plains: 5 of 254 (2%)

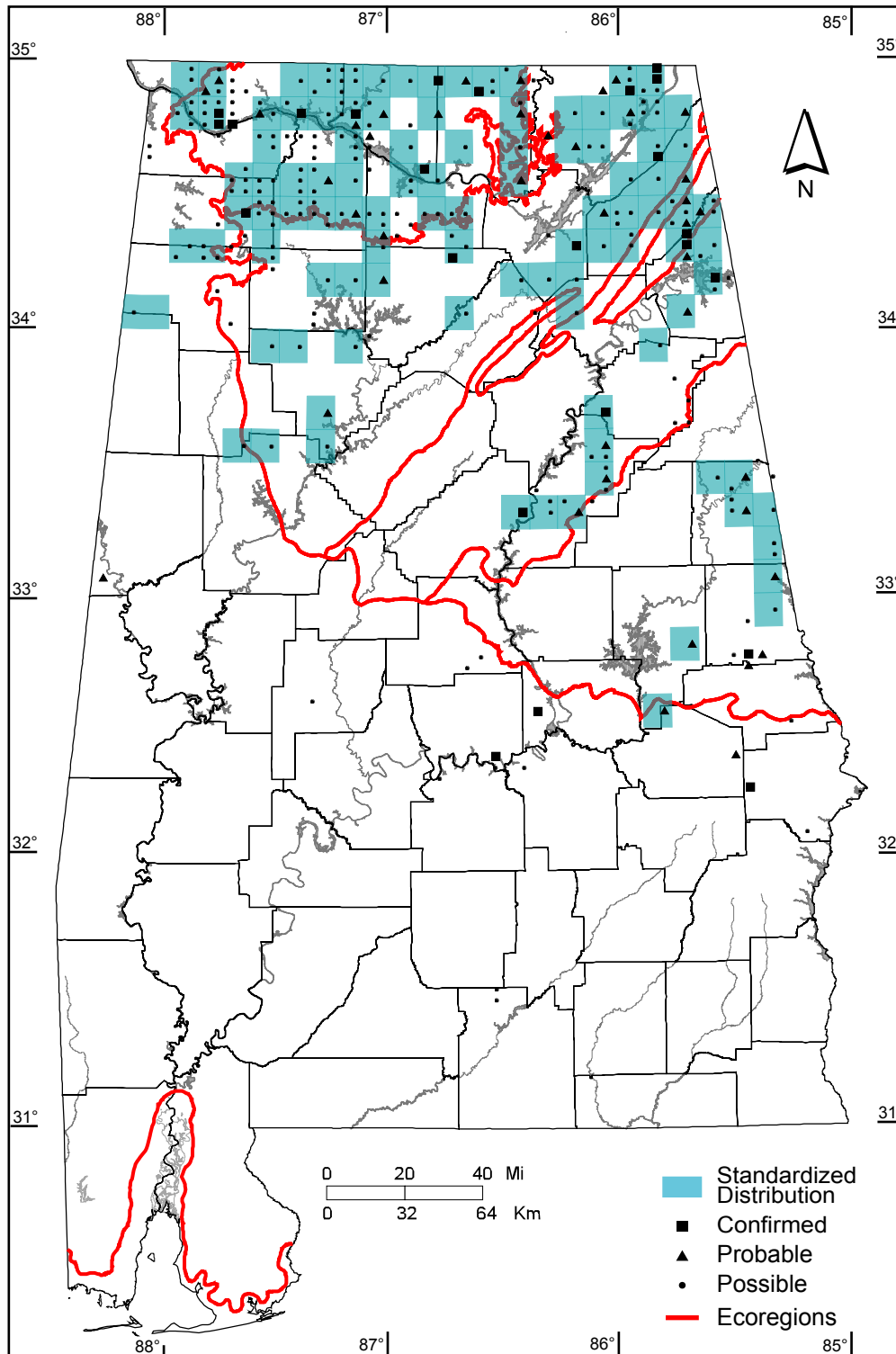
Southern Coastal Plain: 0 of 7 (0%)

Number of Blocks with Breeding Evidence

Total: 272 of 5087 (5%)

Confirmed: 24 of 5087 (<1%)

Safe Dates: May 10 - July 31



©Alabama Breeding Bird Atlas
All Rights Reserved

Seaside Sparrow (*Ammodramus maritimus*)

Number of Priority Blocks with Breeding Evidence

Total: 0 of 585 (0%)

Confirmed: 0 (0%)

Probable: 0 (0%)

Possible: 0 (0%)

Number of Priority Blocks in Ecoregions with Breeding Evidence

Interior Plateau: 0 of 52 (0%)

Southwestern Appalachians: 0 of 124 (0%)

Ridge and Valley: 0 of 72 (0%)

Piedmont: 0 of 76 (0%)

Southeastern Plains: 0 of 254 (0%)

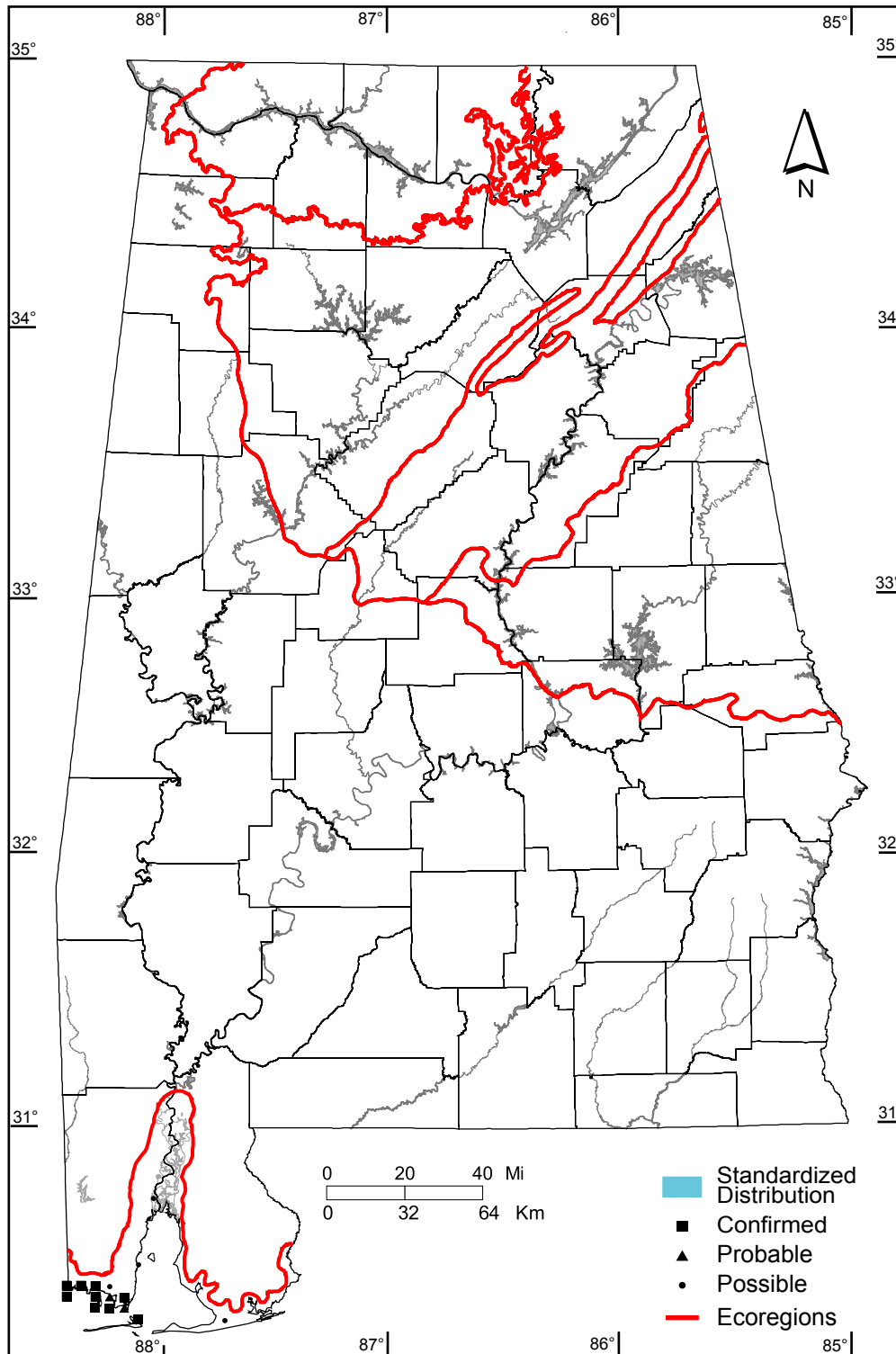
Southern Coastal Plain: 0 of 7 (0%)

Number of Blocks with Breeding Evidence

Total: 15 of 5087 (<1%)

Confirmed: 9 of 5087 (<1%)

Safe Dates: May 15 - July 31



©Alabama Breeding Bird Atlas
All Rights Reserved

Song Sparrow (*Melospiza melodia*)

Number of Priority Blocks with Breeding Evidence

Total: 85 of 585 (15%)

Confirmed: 10 (12%)

Probable: 16 (19%)

Possible: 59 (69%)

Number of Priority Blocks in Ecoregions with Breeding Evidence

Interior Plateau: 20 of 52 (38%)

Southwestern Appalachians: 36 of 124 (29%)

Ridge and Valley: 24 of 72 (33%)

Piedmont: 4 of 76 (5%)

Southeastern Plains: 1 of 254 (<1%)

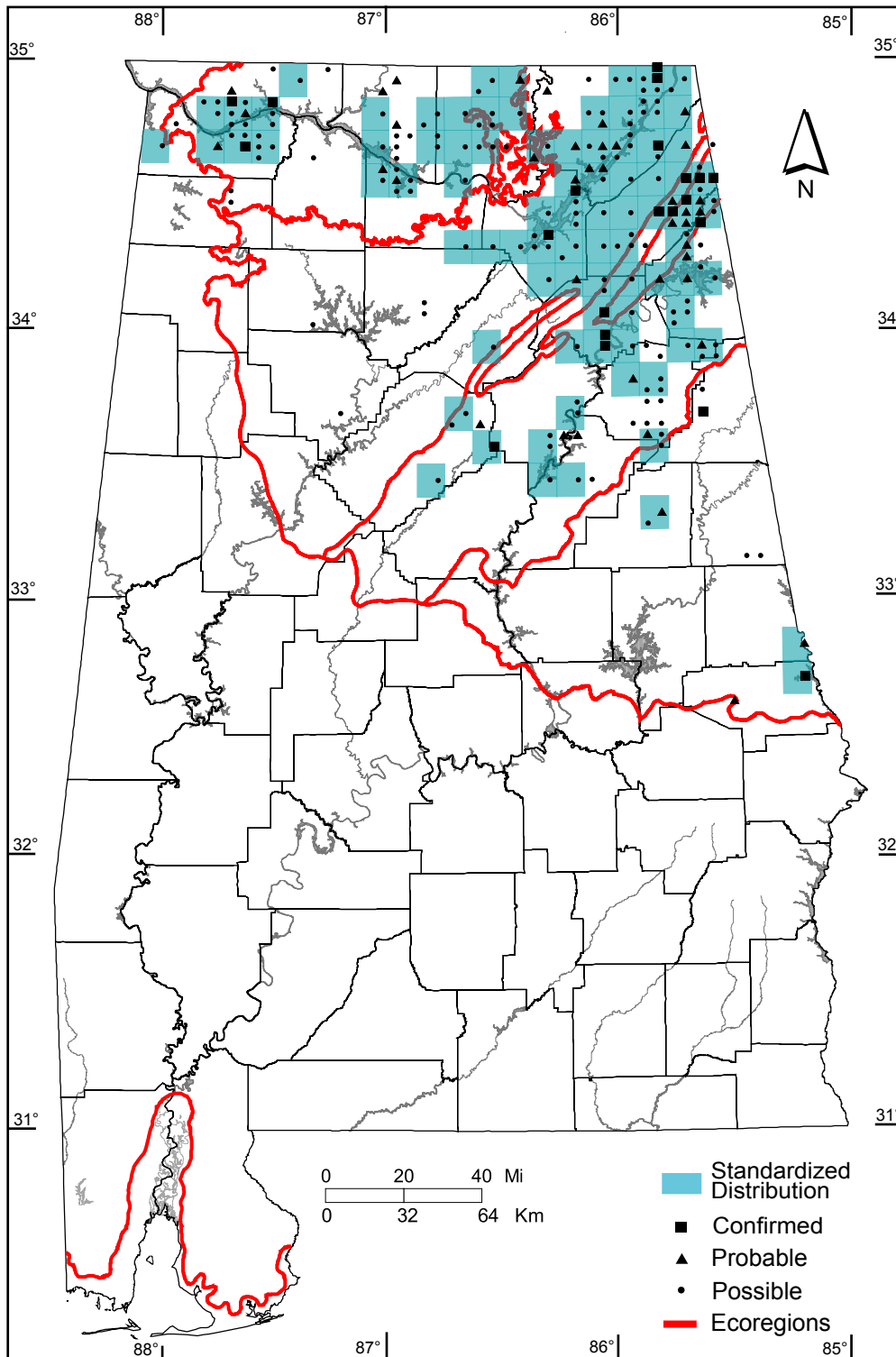
Southern Coastal Plain: 0 of 7 (0%)

Number of Blocks with Breeding Evidence

Total: 211 of 5087 (4%)

Confirmed: 21 of 5087 (<1%)

Safe Dates: May 1 - July 31



©Alabama Breeding Bird Atlas
All Rights Reserved

Northern Cardinal (*Cardinalis cardinalis*)

Number of Priority Blocks with Breeding Evidence

Total: 585 of 585 (100%)

Confirmed: 289 (49%)

Probable: 275 (47%)

Possible: 21 (4%)

Number of Priority Blocks in Ecoregions with Breeding Evidence

Interior Plateau: 52 of 52 (100%)

Southwestern Appalachians: 124 of 124 (100%)

Ridge and Valley: 72 of 72 (100%)

Piedmont: 76 of 76 (4%)

Southeastern Plains: 254 of 254 (10%)

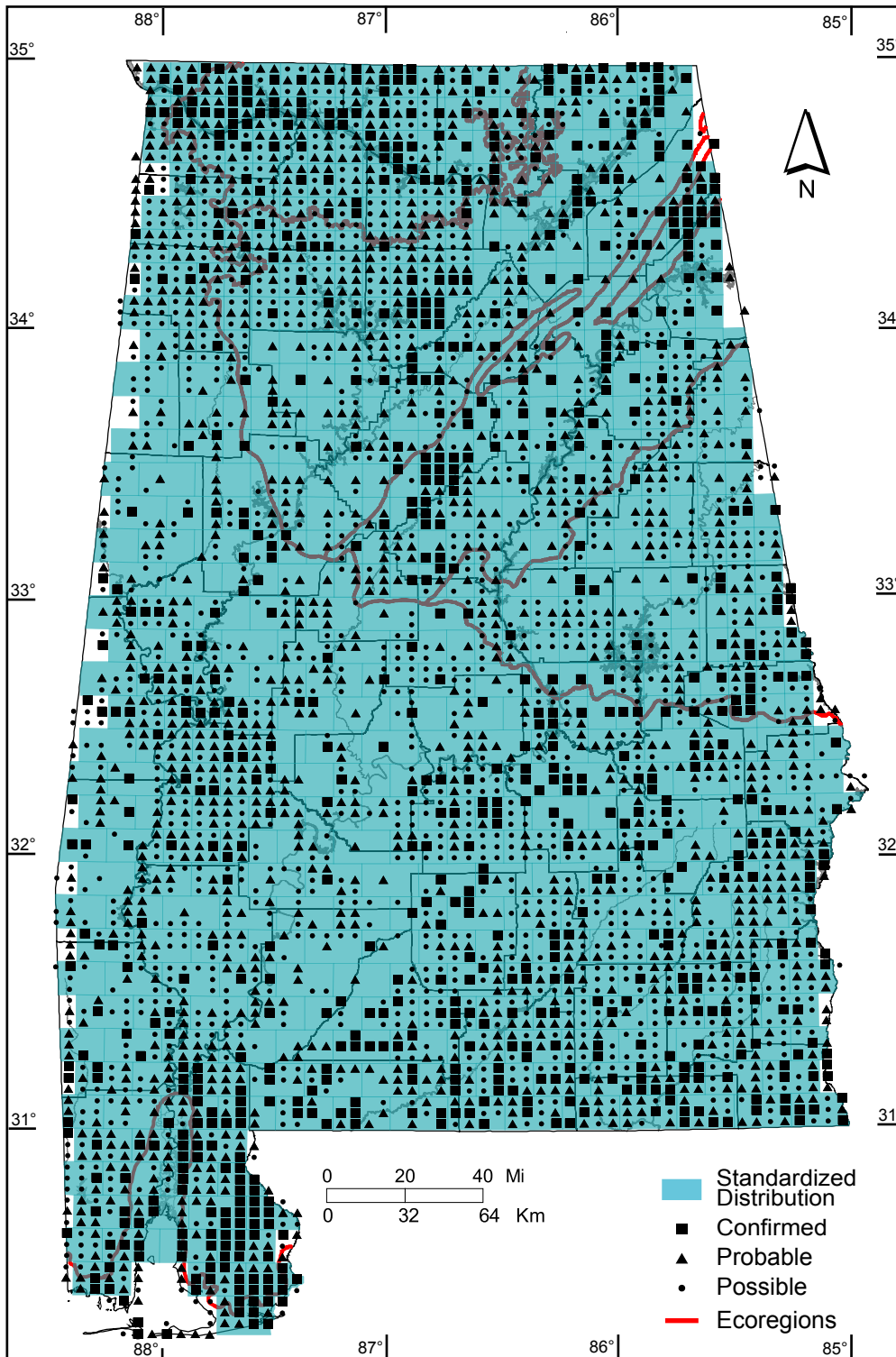
Southern Coastal Plain: 7 of 7 (100%)

Number of Blocks with Breeding Evidence

Total: 3445 of 5087 (68%)

Confirmed: 771 of 5087 (15%)

Safe Dates: March 1 - August 15



©Alabama Breeding Bird Atlas
All Rights Reserved

Blue Grosbeak (*Passerina caerulea*)

Number of Priority Blocks with Breeding Evidence

Total: 575 of 585 (98%)

Confirmed: 139 (24%)

Probable: 279 (49%)

Possible: 157 (27%)

Number of Priority Blocks in Ecoregions with Breeding Evidence

Interior Plateau: 50 of 52 (96%)

Southwestern Appalachians: 123 of 124 (99%)

Ridge and Valley: 72 of 72 (100%)

Piedmont: 76 of 76 (100%)

Southeastern Plains: 247 of 254 (97%)

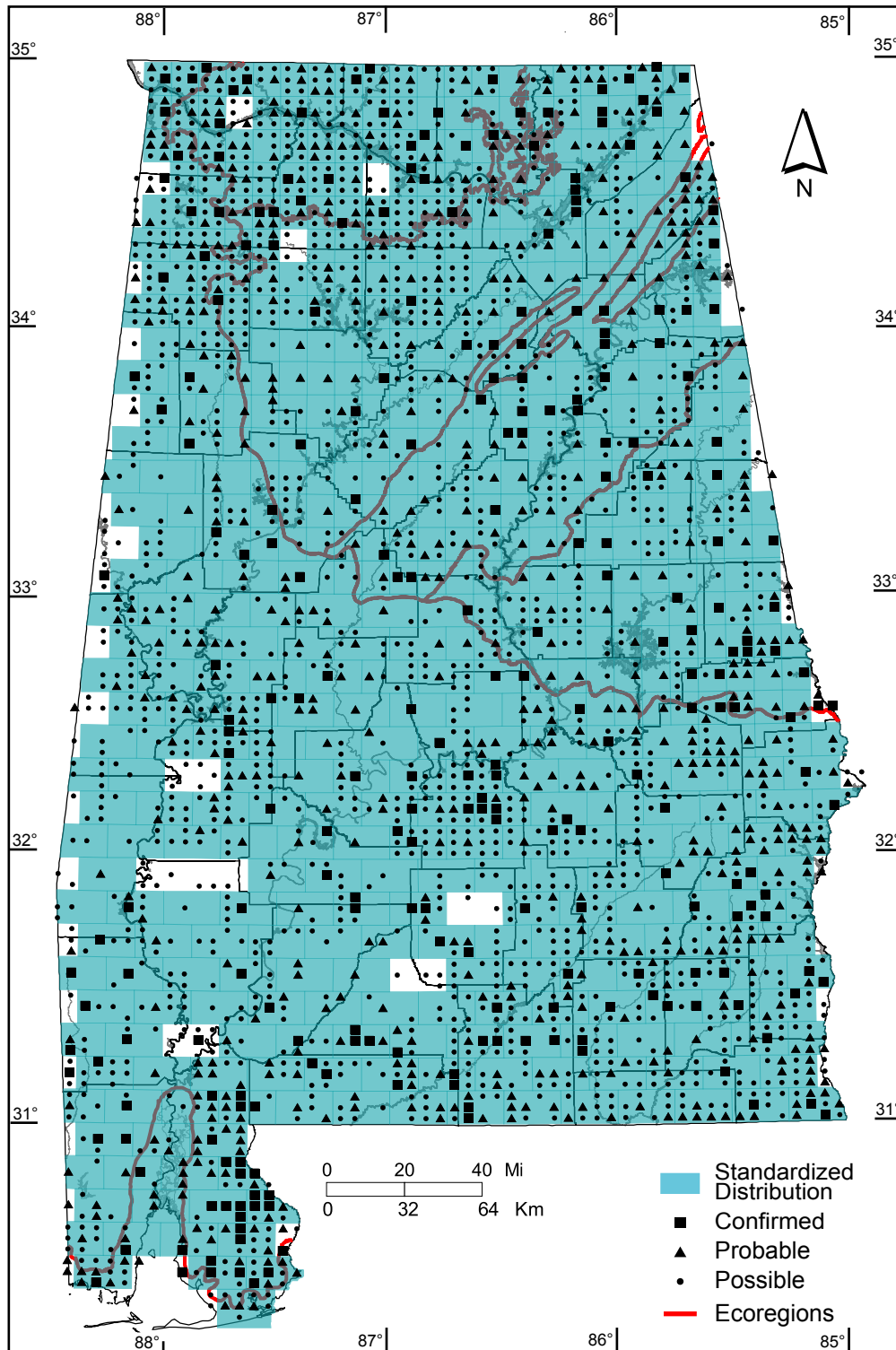
Southern Coastal Plain: 7 of 7 (100%)

Number of Blocks with Breeding Evidence

Total: 2450 of 5087 (48%)

Confirmed: 267 of 5087 (5%)

Safe Dates: May 15 - July 31



©Alabama Breeding Bird Atlas
All Rights Reserved

Indigo Bunting (*Passerina cyanea*)

Number of Priority Blocks with Breeding Evidence

Total: 584 of 585 (100%)

Confirmed: 178 (30%)

Probable: 371 (64%)

Possible: 35 (6%)

Number of Priority Blocks in Ecoregions with Breeding Evidence

Interior Plateau: 52 of 52 (100%)

Southwestern Appalachians: 124 of 124 (100%)

Ridge and Valley: 72 of 72 (100%)

Piedmont: 76 of 76 (100%)

Southeastern Plains: 254 of 254 (100%)

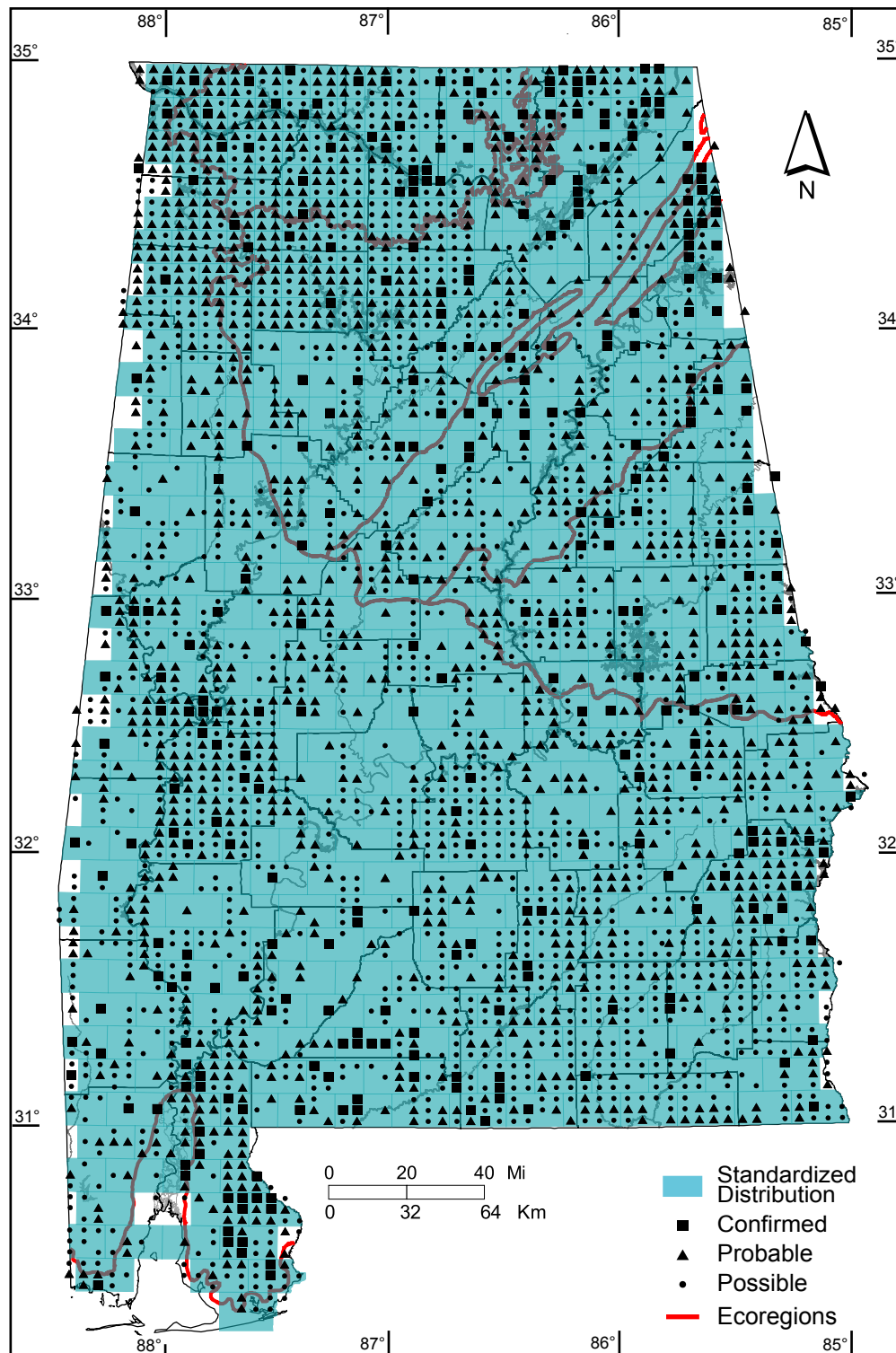
Southern Coastal Plain: 6 of 7 (86%)

Number of Blocks with Breeding Evidence

Total: 3060 of 5087 (60%)

Confirmed: 318 of 5087 (6%)

Safe Dates: May 15 - July 31



©Alabama Breeding Bird Atlas
All Rights Reserved

Painted Bunting (*Passerina ciris*)

Number of Priority Blocks with Breeding Evidence

Total: 11 of 585 (2%)

Confirmed: 2 (18%)

Probable: 3 (27%)

Possible: 6 (55%)

Number of Priority Blocks in Ecoregions with Breeding Evidence

Interior Plateau: 0 of 52 (0%)

Southwestern Appalachians: 0 of 124 (0%)

Ridge and Valley: 0 of 72 (0%)

Piedmont: 0 of 76 (0%)

Southeastern Plains: 9 of 254 (4%)

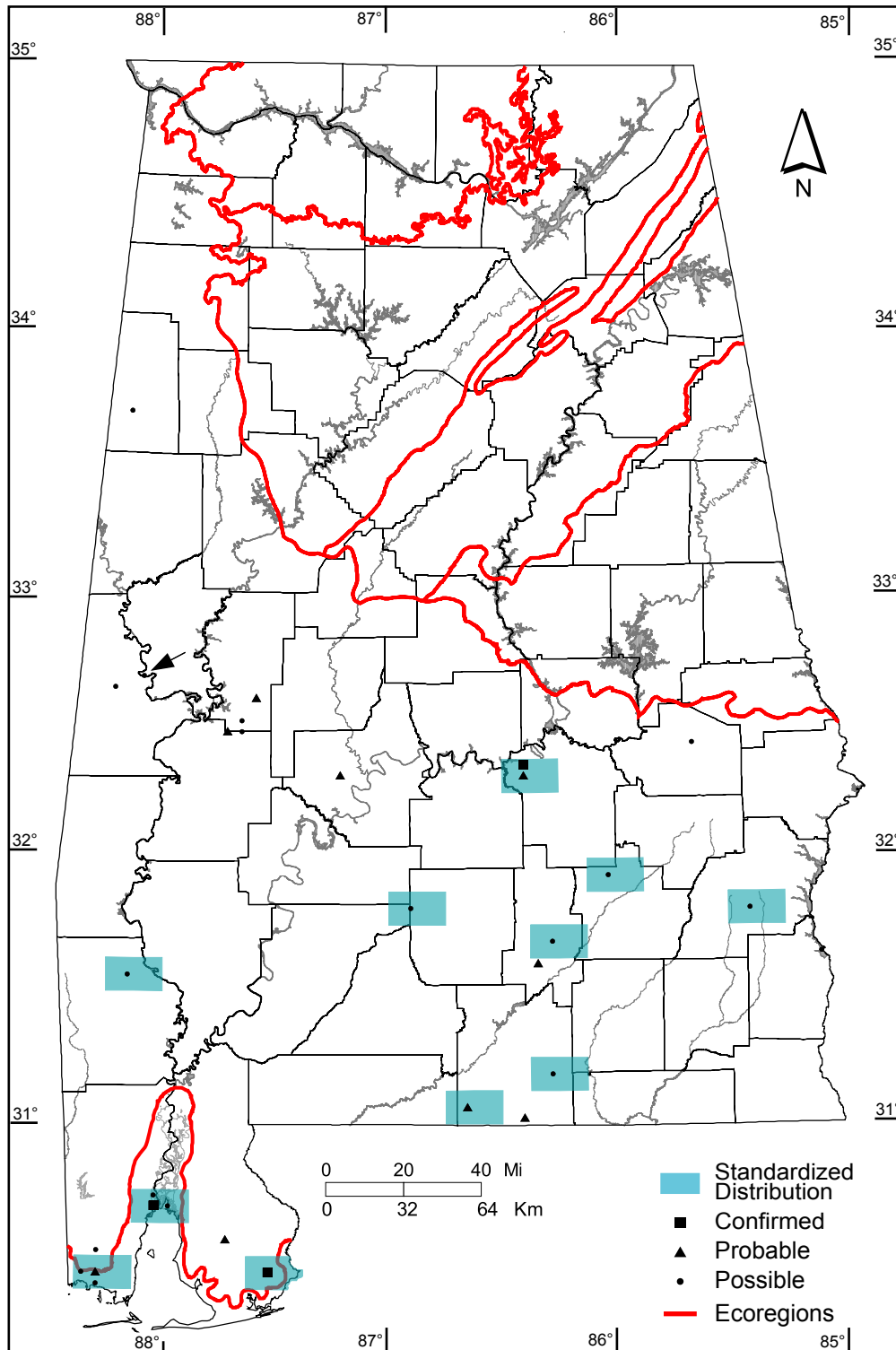
Southern Coastal Plain: 2 of 7 (29%)

Number of Blocks with Breeding Evidence

Total: 30 of 5087 (1%)

Confirmed: 3 of 5087 (<1%)

Safe Dates: May 15 - July 20



©Alabama Breeding Bird Atlas
All Rights Reserved

Dickcissel (*Spiza americana*)

Number of Priority Blocks with Breeding Evidence

Total: 60 of 585 (10%)

Confirmed: 7 (12%)

Probable: 21 (35%)

Possible: 32 (53%)

Number of Priority Blocks in Ecoregions with Breeding Evidence

Interior Plateau: 32 of 52 (62%)

Southwestern Appalachians: 11 of 124 (9%)

Ridge and Valley: 4 of 72 (6%)

Piedmont: 0 of 76 (0%)

Southeastern Plains: 13 of 254 (5%)

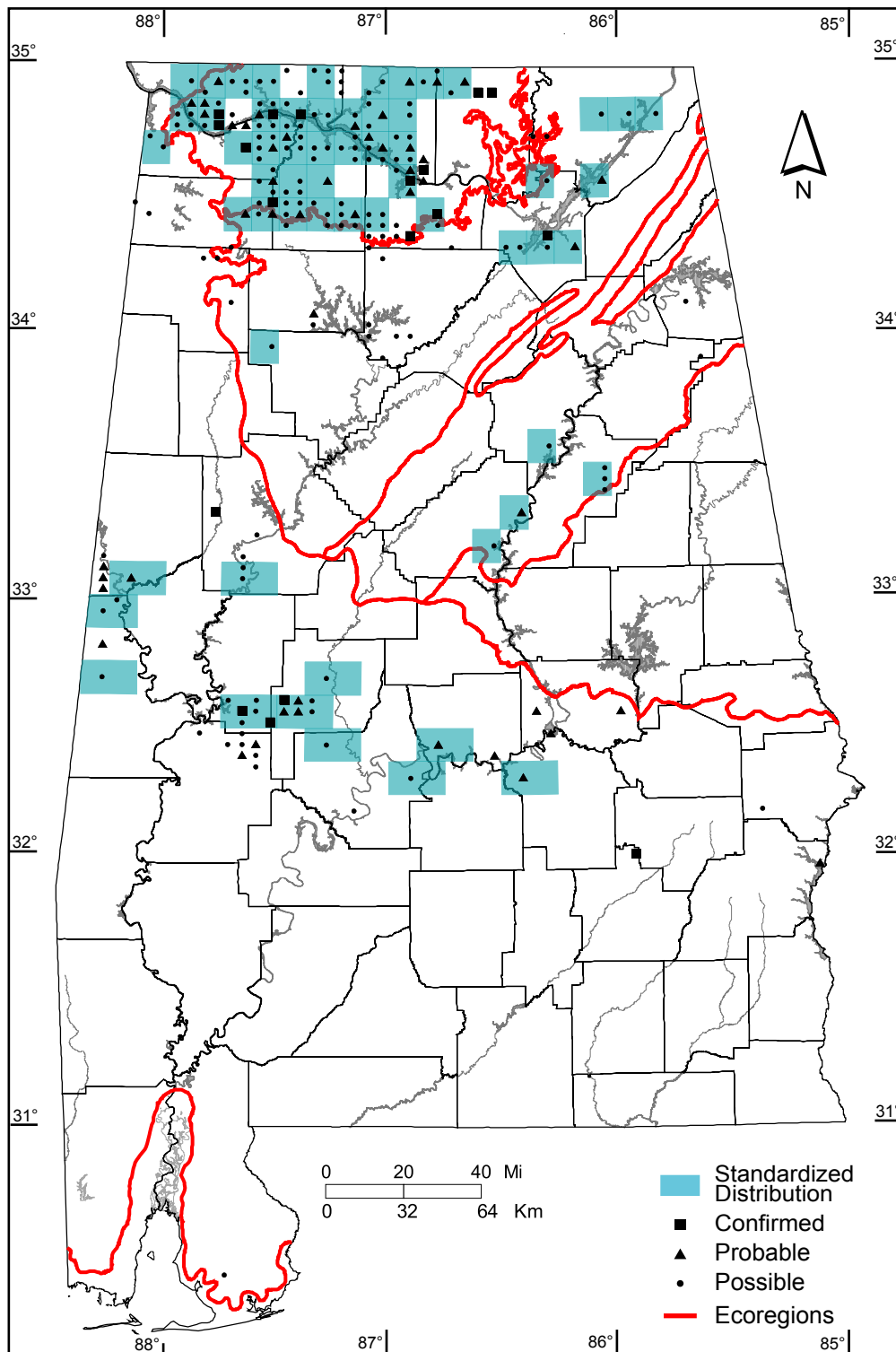
Southern Coastal Plain: 0 of 7 (0%)

Number of Blocks with Breeding Evidence

Total: 218 of 5087 (4%)

Confirmed: 18 of 5087 (<1%)

Safe Dates: May 20 - July 31



©Alabama Breeding Bird Atlas
All Rights Reserved

Red-winged Blackbird (*Agelaius phoeniceus*)

Number of Priority Blocks with Breeding Evidence

Total: 493 of 585 (84%)

Confirmed: 142 (29%)

Probable: 216 (44%)

Possible: 135 (27%)

Number of Priority Blocks in Ecoregions with Breeding Evidence

Interior Plateau: 52 of 52 (100%)

Southwestern Appalachians: 114 of 124 (92%)

Ridge and Valley: 67 of 72 (93%)

Piedmont: 60 of 76 (79%)

Southeastern Plains: 193 of 254 (76%)

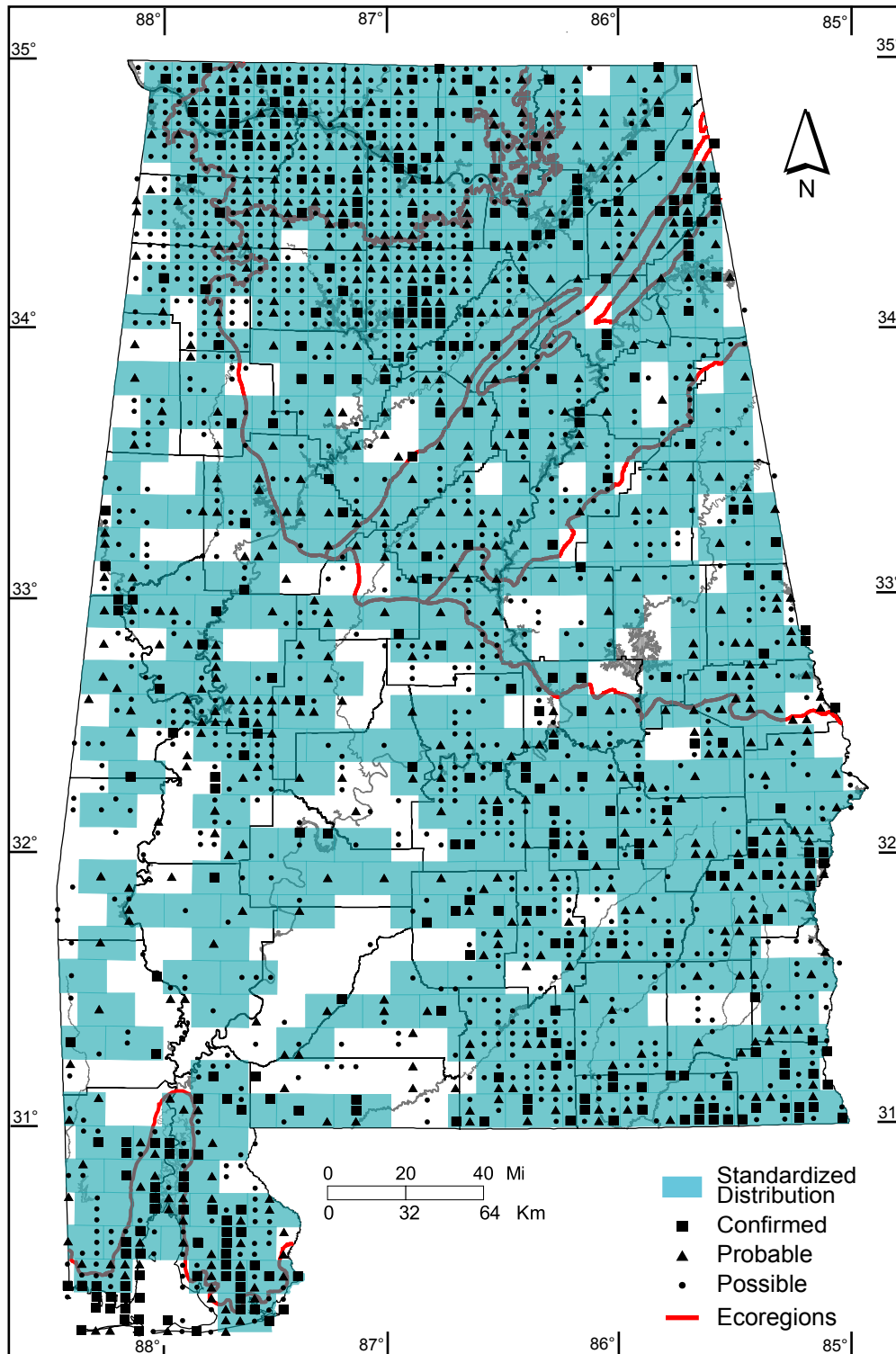
Southern Coastal Plain: 7 of 7 (100%)

Number of Blocks with Breeding Evidence

Total: 2005 of 5087 (39%)

Confirmed: 351 of 5087 (7%)

Safe Dates: May 1 - July 15



©Alabama Breeding Bird Atlas
All Rights Reserved

Eastern Meadowlark (*Sturnella magna*)

Number of Priority Blocks with Breeding Evidence

Total: 448 of 585 (77%)

Confirmed: 83 (18%)

Probable: 169 (38%)

Possible: 196 (44%)

Number of Priority Blocks in Ecoregions with Breeding Evidence

Interior Plateau: 52 of 52 (100%)

Southwestern Appalachians: 107 of 124 (86%)

Ridge and Valley: 59 of 72 (82%)

Piedmont: 58 of 76 (76%)

Southeastern Plains: 167 of 254 (66%)

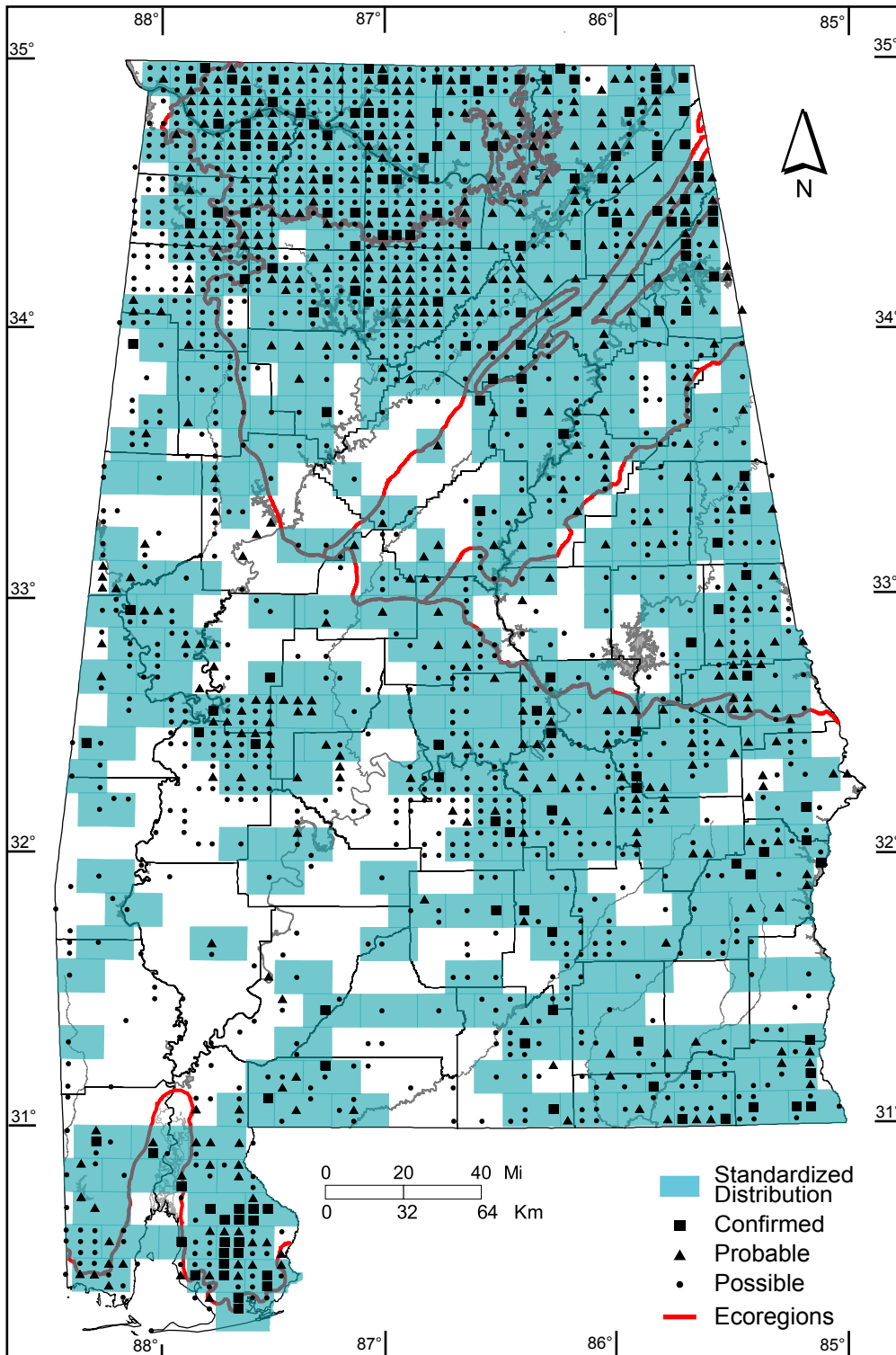
Southern Coastal Plain: 5 of 7 (71%)

Number of Blocks with Breeding Evidence

Total: 1715 of 5087 (34%)

Confirmed: 168 of 5087 (3%)

Safe Dates: May 1 - July 31



©Alabama Breeding Bird Atlas
All Rights Reserved

Common Grackle (*Quiscalus quiscula*)

Number of Priority Blocks with Breeding Evidence

Total: 529 of 585 (90%)

Confirmed: 182 (34%)

Probable: 145 (28%)

Possible: 202 (38%)

Number of Priority Blocks in Ecoregions with Breeding Evidence

Interior Plateau: 52 of 52 (100%)

Southwestern Appalachians: 113 of 124 (91%)

Ridge and Valley: 69 of 72 (96%)

Piedmont: 70 of 76 (92%)

Southeastern Plains: 218 of 254 (86%)

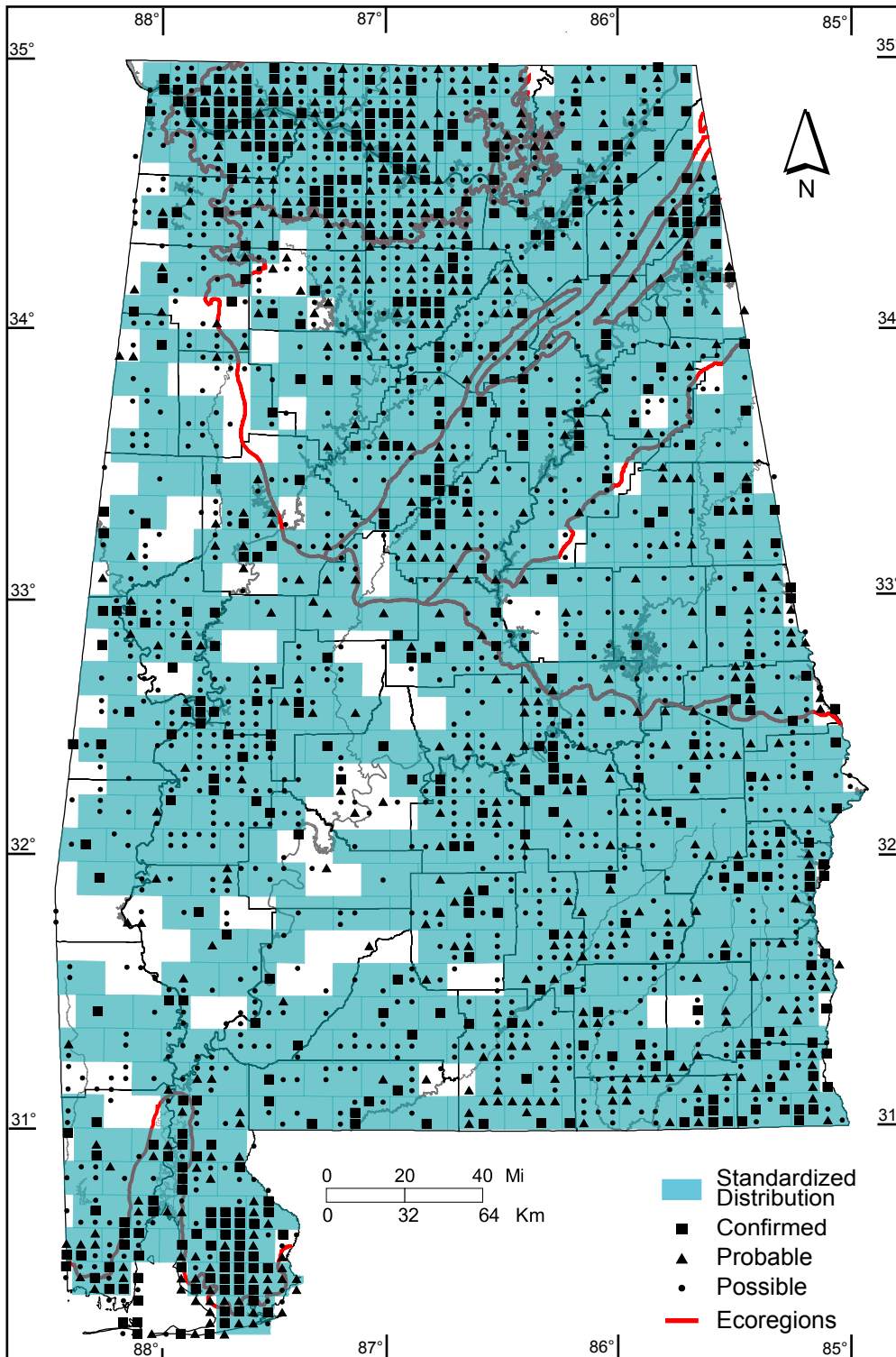
Southern Coastal Plain: 7 of 7 (100%)

Number of Blocks with Breeding Evidence

Total: 2050 of 5087 (40%)

Confirmed: 481 of 5087 (9%)

Safe Dates: April 15 - July 15



©Alabama Breeding Bird Atlas
All Rights Reserved

Boat-tailed Grackle (*Quiscalus major*)

Number of Priority Blocks with Breeding Evidence

Total: 2 of 585 (<1%)

Confirmed: 2 (100%)

Probable: 0 (0%)

Possible: 0 (0%)

Number of Priority Blocks in Ecoregions with Breeding Evidence

Interior Plateau: 0 of 52 (0%)

Southwestern Appalachians: 0 of 124 (0%)

Ridge and Valley: 0 of 72 (0%)

Piedmont: 0 of 76 (0%)

Southeastern Plains: 1 of 254 (<1%)

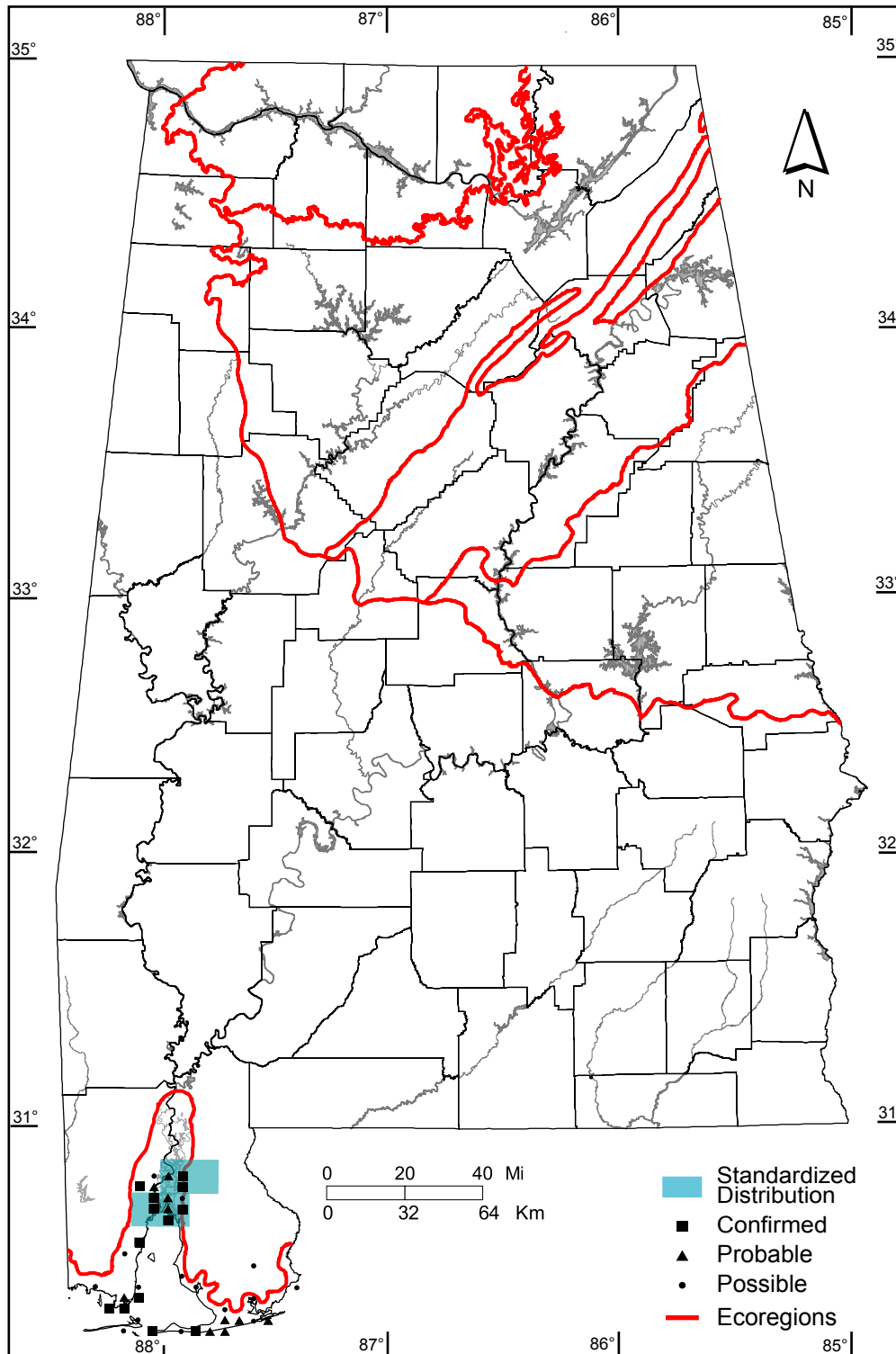
Southern Coastal Plain: 1 of 7 (14%)

Number of Blocks with Breeding Evidence

Total: 38 of 5087 (1%)

Confirmed: 13 of 5087 (<1%)

Safe Dates: April 15 - July 15



©Alabama Breeding Bird Atlas
All Rights Reserved

Brown-headed Cowbird (*Molothrus ater*)

Number of Priority Blocks with Breeding Evidence

Total: 576 of 585 (98%)

Confirmed: 55 (9%)

Probable: 327 (57%)

Possible: 194 (34%)

Number of Priority Blocks in Ecoregions with Breeding Evidence

Interior Plateau: 52 of 52 (100%)

Southwestern Appalachians: 123 of 124 (99%)

Ridge and Valley: 72 of 72 (100%)

Piedmont: 75 of 76 (99%)

Southeastern Plains: 247 of 254 (97%)

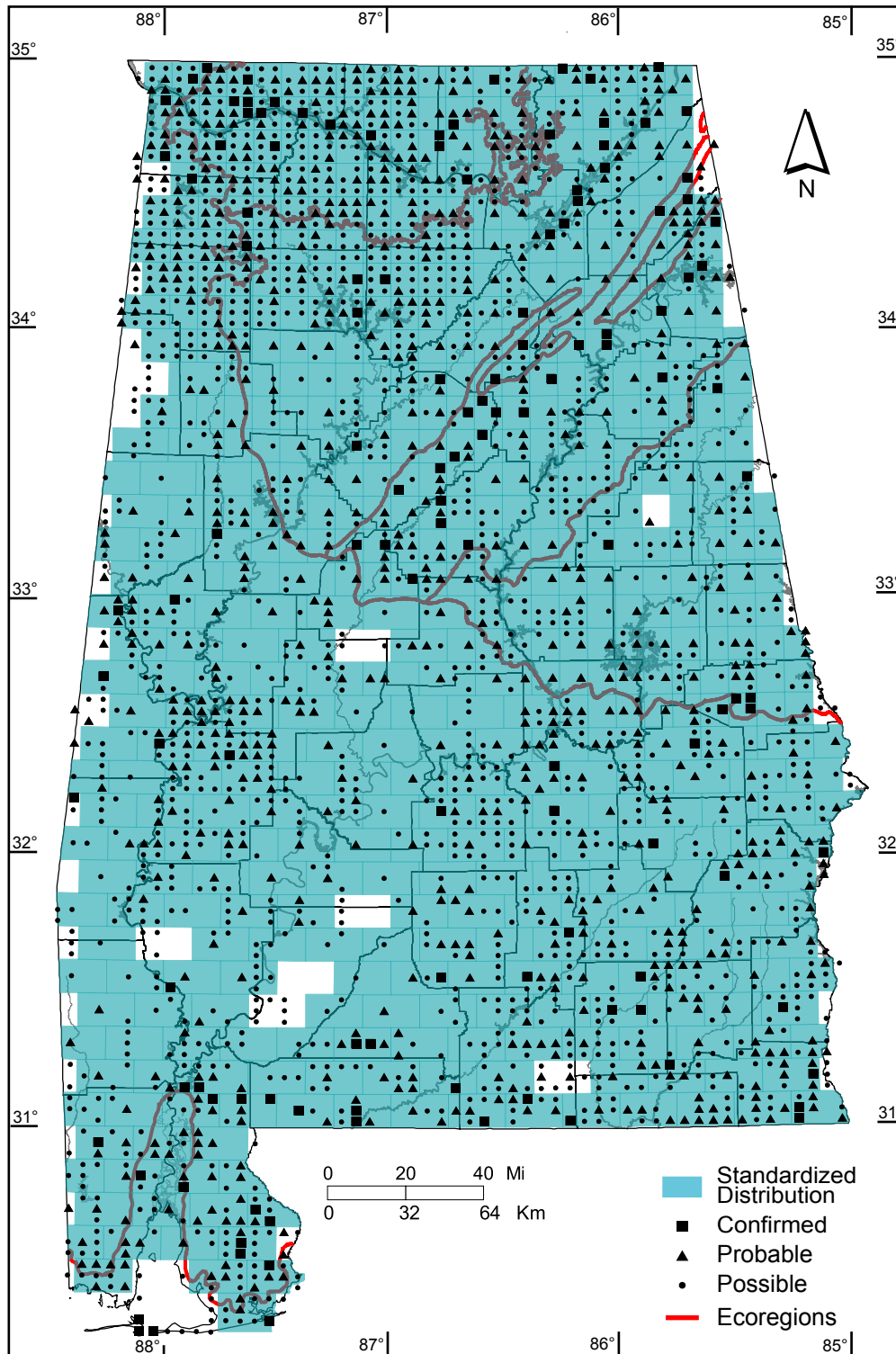
Southern Coastal Plain: 7 of 7 (100%)

Number of Blocks with Breeding Evidence

Total: 2342 of 5087 (46%)

Confirmed: 129 of 5087 (3%)

Safe Dates: May 1 - July 15



©Alabama Breeding Bird Atlas
All Rights Reserved

Orchard Oriole (*Icterus spurius*)

Number of Priority Blocks with Breeding Evidence

Total: 543 of 585 (93%)

Confirmed: 126 (23%)

Probable: 202 (37%)

Possible: 215 (40%)

Number of Priority Blocks in Ecoregions with Breeding Evidence

Interior Plateau: 49 of 52 (94%)

Southwestern Appalachians: 111 of 124 (90%)

Ridge and Valley: 57 of 72 (79%)

Piedmont: 69 of 76 (91%)

Southeastern Plains: 250 of 254 (98%)

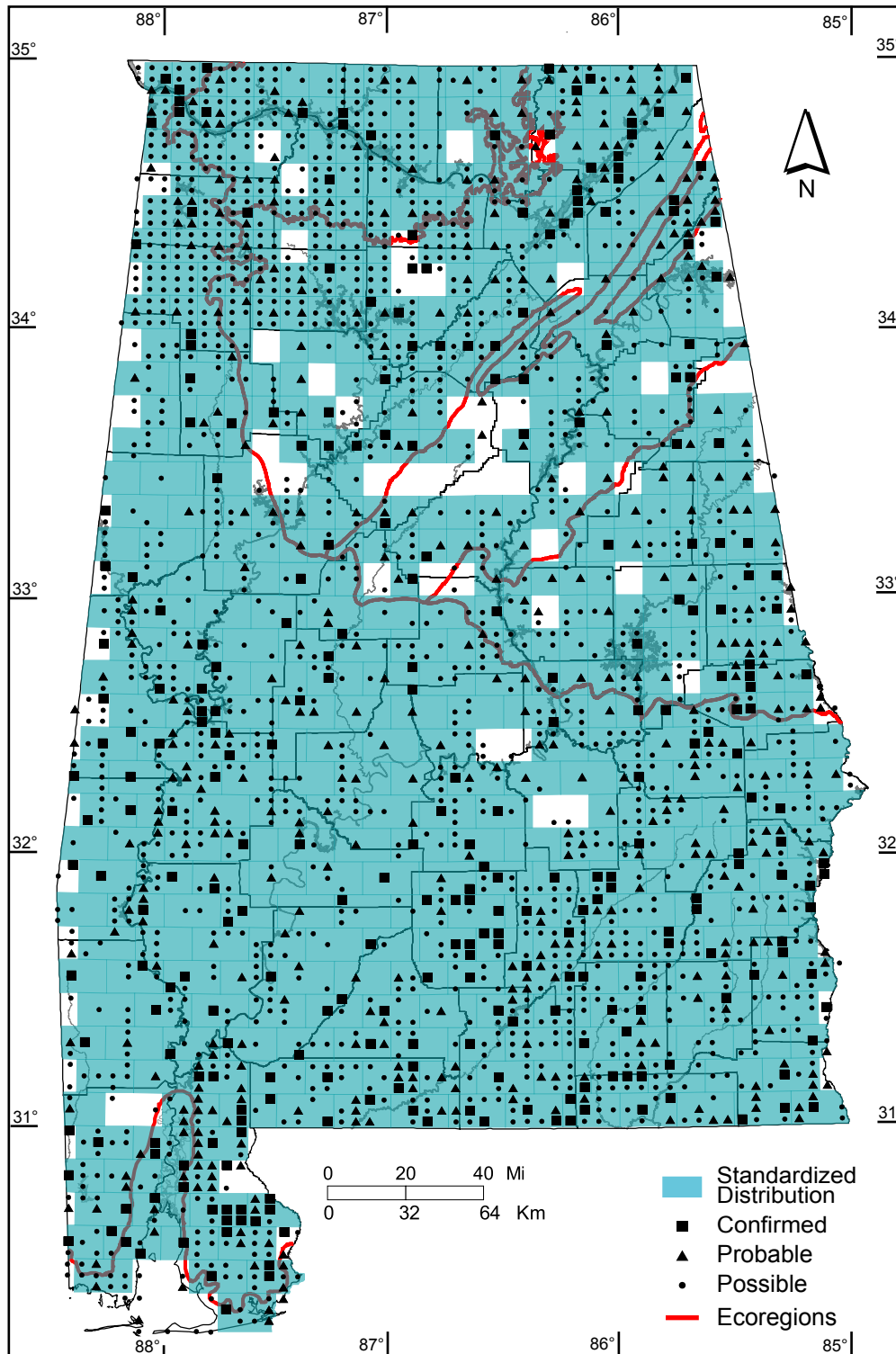
Southern Coastal Plain: 7 of 7 (100%)

Number of Blocks with Breeding Evidence

Total: 2177 of 5087 (43%)

Confirmed: 294 of 5087 (6%)

Safe Dates: May 15 - July 5



©Alabama Breeding Bird Atlas
All Rights Reserved

Baltimore Oriole (*Icterus galbula*)

Number of Priority Blocks with Breeding Evidence

Total: 13 of 585 (2%)

Confirmed: 1 (8%)

Probable: 0 (0%)

Possible: 12 (92%)

Number of Priority Blocks in Ecoregions with Breeding Evidence

Interior Plateau: 6 of 52 (12%)

Southwestern Appalachians: 2 of 124 (2%)

Ridge and Valley: 0 of 72 (0%)

Piedmont: 1 of 76 (1%)

Southeastern Plains: 4 of 254 (2%)

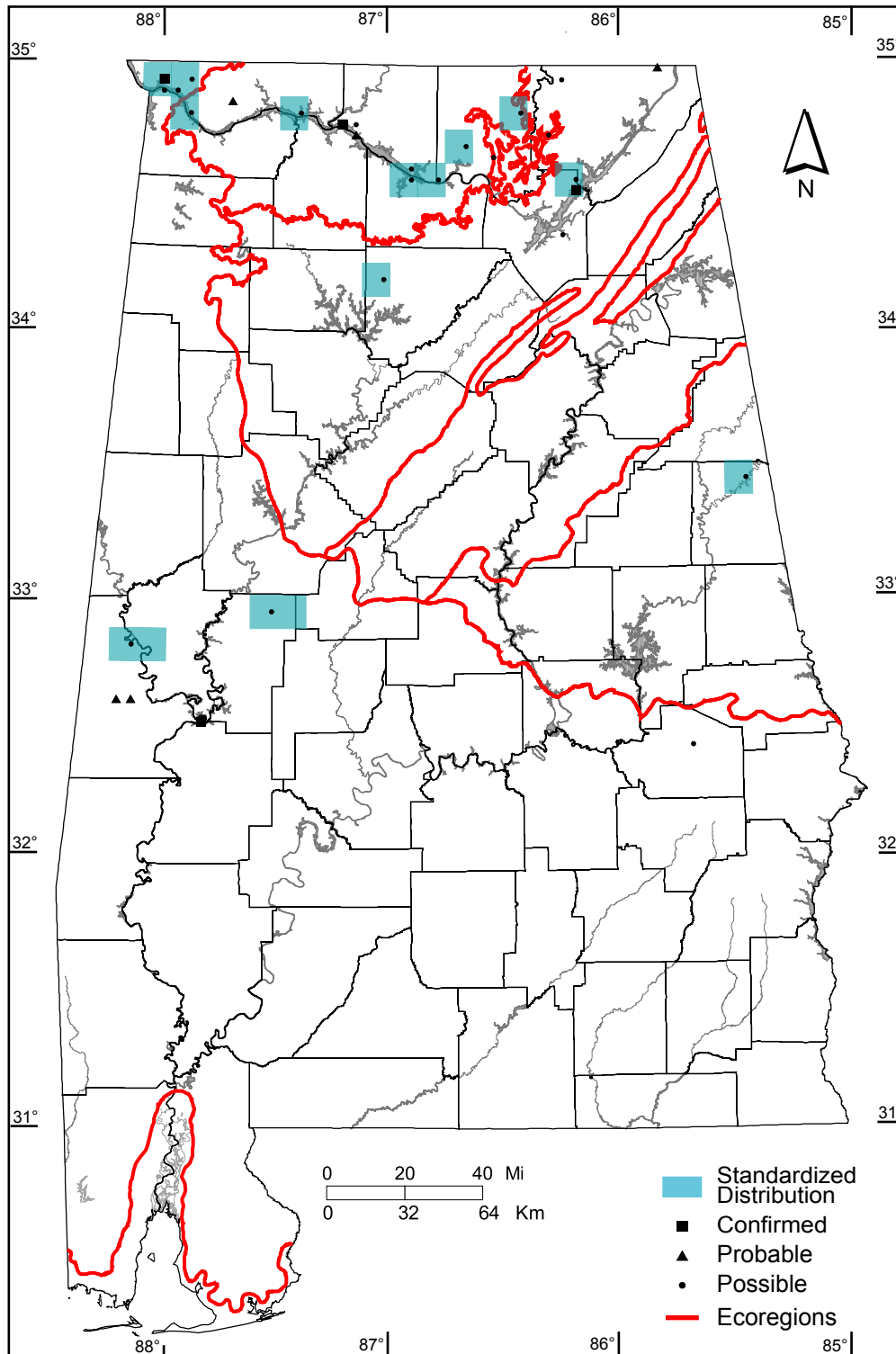
Southern Coastal Plain: 0 of 7 (0%)

Number of Blocks with Breeding Evidence

Total: 30 of 5087 (1%)

Confirmed: 4 of 5087 (<1%)

Safe Dates: May 15 - July 20



©Alabama Breeding Bird Atlas
All Rights Reserved

House Finch (*Carpodacus mexicanus*)

Number of Priority Blocks with Breeding Evidence

Total: 427 of 585 (73%)

Confirmed: 138 (32%)

Probable: 146 (34%)

Possible: 143 (34%)

Number of Priority Blocks in Ecoregions with Breeding Evidence

Interior Plateau: 50 of 52 (96%)

Southwestern Appalachians: 103 of 124 (83%)

Ridge and Valley: 67 of 72 (93%)

Piedmont: 61 of 76 (80%)

Southeastern Plains: 140 of 254 (55%)

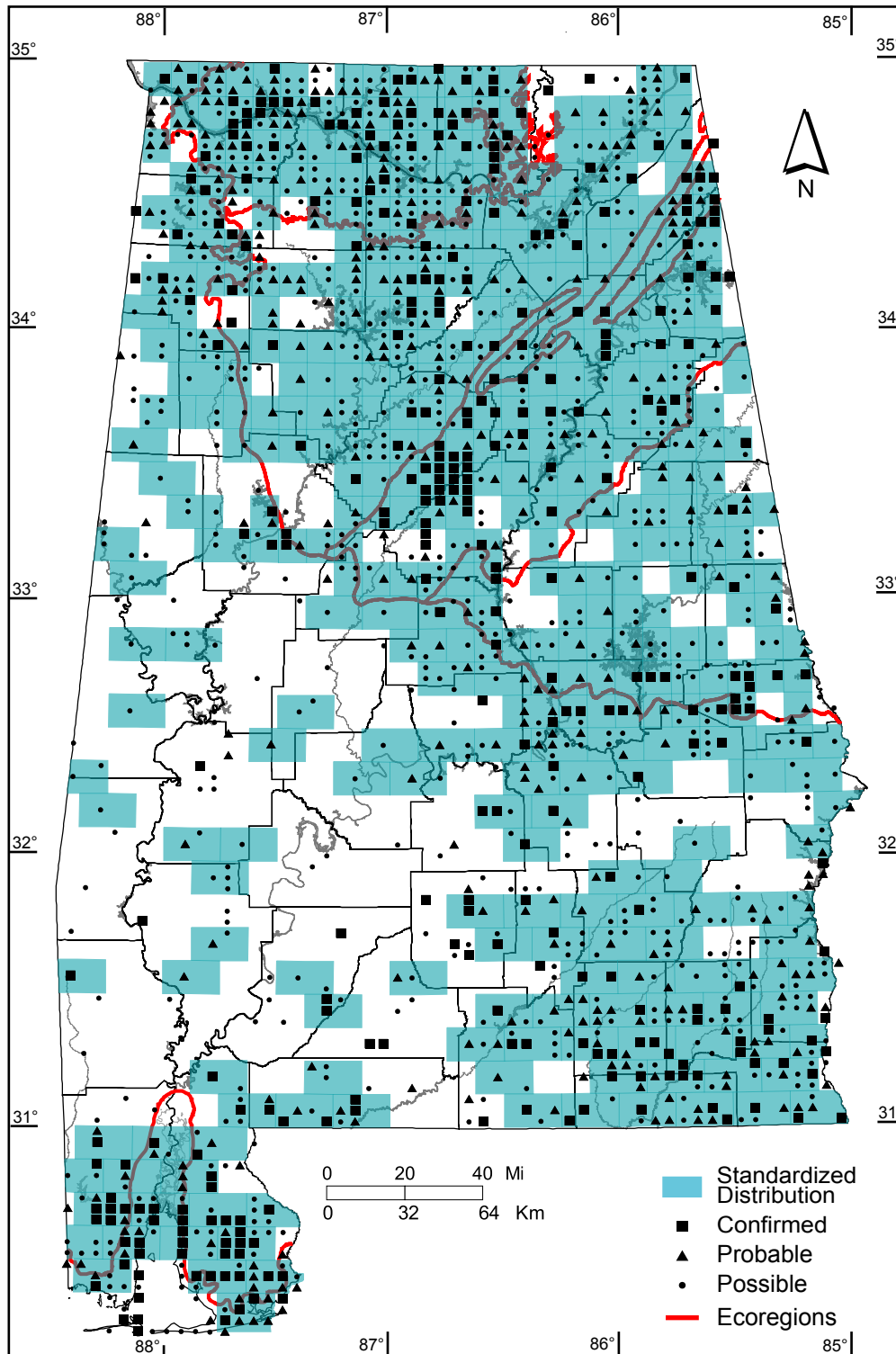
Southern Coastal Plain: 6 of 7 (86%)

Number of Blocks with Breeding Evidence

Total: 1460 of 5087 (29%)

Confirmed: 336 of 5087 (7%)

Safe Dates: April 20 - July 10



©Alabama Breeding Bird Atlas
All Rights Reserved

Red Crossbill (*Loxia curvirostra*)

Number of Priority Blocks with Breeding Evidence

Total: 2 of 585 (<1%)

Confirmed: 1 (50%)

Probable: 0 (0%)

Possible: 1 (50%)

Number of Priority Blocks in Ecoregions with Breeding Evidence

Interior Plateau: 0 of 52 (0%)

Southwestern Appalachians: 0 of 124 (0%)

Ridge and Valley: 0 of 72 (0%)

Piedmont: 2 of 76 (3%)

Southeastern Plains: 0 of 254 (0%)

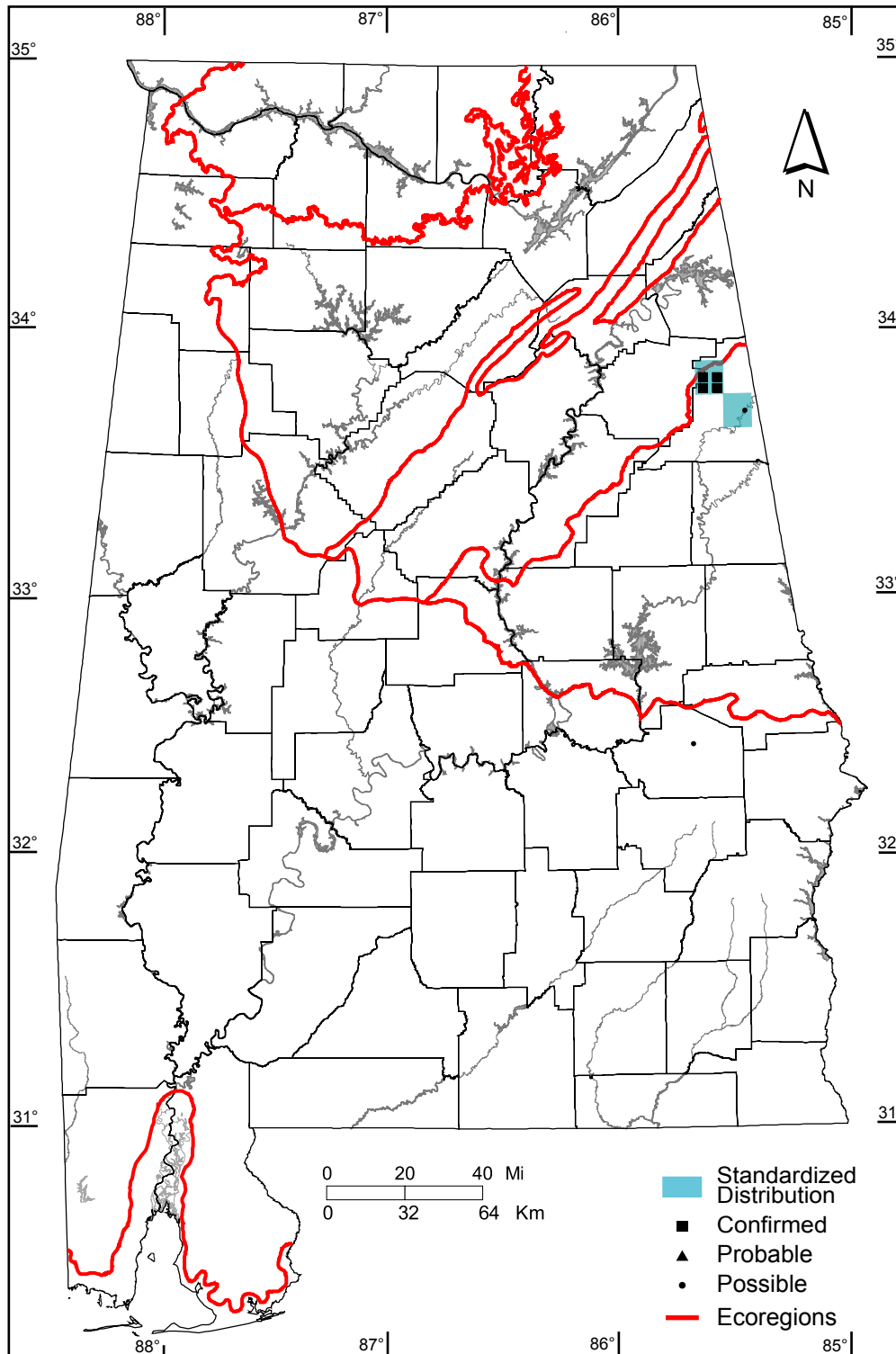
Southern Coastal Plain: 0 of 7 (0%)

Number of Blocks with Breeding Evidence

Total: 6 of 5087 (<1%)

Confirmed: 4 of 5087 (<1%)

Safe Dates: April 1 - September 15



©Alabama Breeding Bird Atlas
All Rights Reserved

American Goldfinch (*Carduelis tristis*)

Number of Priority Blocks with Breeding Evidence

Total: 337 of 585 (58%)

Confirmed: 15 (4%)

Probable: 151 (45%)

Possible: 171 (51%)

Number of Priority Blocks in Ecoregions with Breeding Evidence

Interior Plateau: 51 of 52 (98%)

Southwestern Appalachians: 103 of 124 (83%)

Ridge and Valley: 61 of 72 (85%)

Piedmont: 66 of 76 (87%)

Southeastern Plains: 56 of 254 (22%)

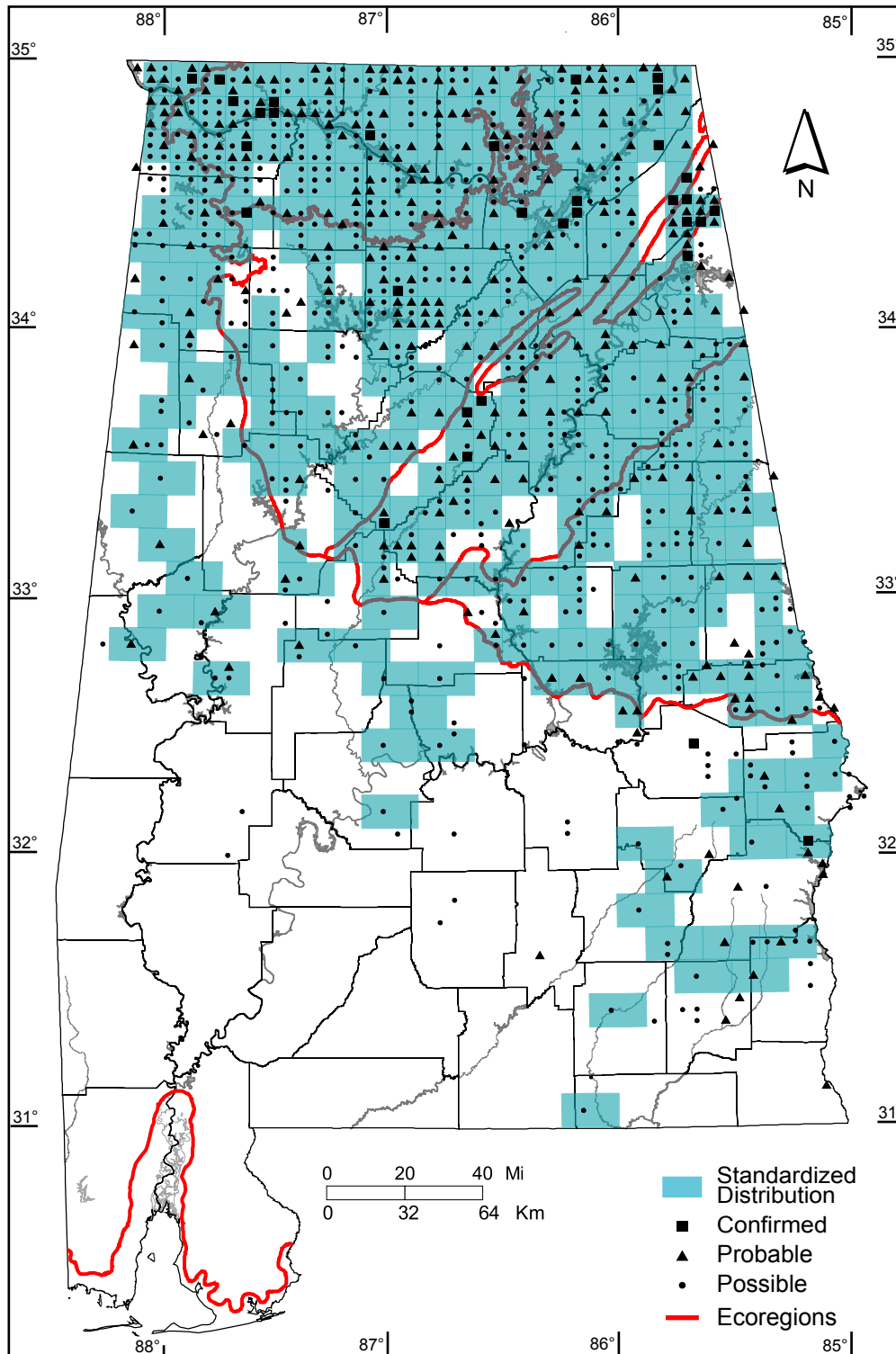
Southern Coastal Plain: 0 of 7 (0%)

Number of Blocks with Breeding Evidence

Total: 924 of 5087 (18%)

Confirmed: 32 of 5087 (1%)

Safe Dates: June 1 - August 15



©Alabama Breeding Bird Atlas
All Rights Reserved

House Sparrow (*Passer domesticus*)

Number of Priority Blocks with Breeding Evidence

Total: 366 of 585 (63%)

Confirmed: 205 (56%)

Probable: 61 (17%)

Possible: 100 (27%)

Number of Priority Blocks in Ecoregions with Breeding Evidence

Interior Plateau: 52 of 52 (100%)

Southwestern Appalachians: 92 of 124 (74%)

Ridge and Valley: 57 of 72 (79%)

Piedmont: 38 of 76 (50%)

Southeastern Plains: 122 of 254 (48%)

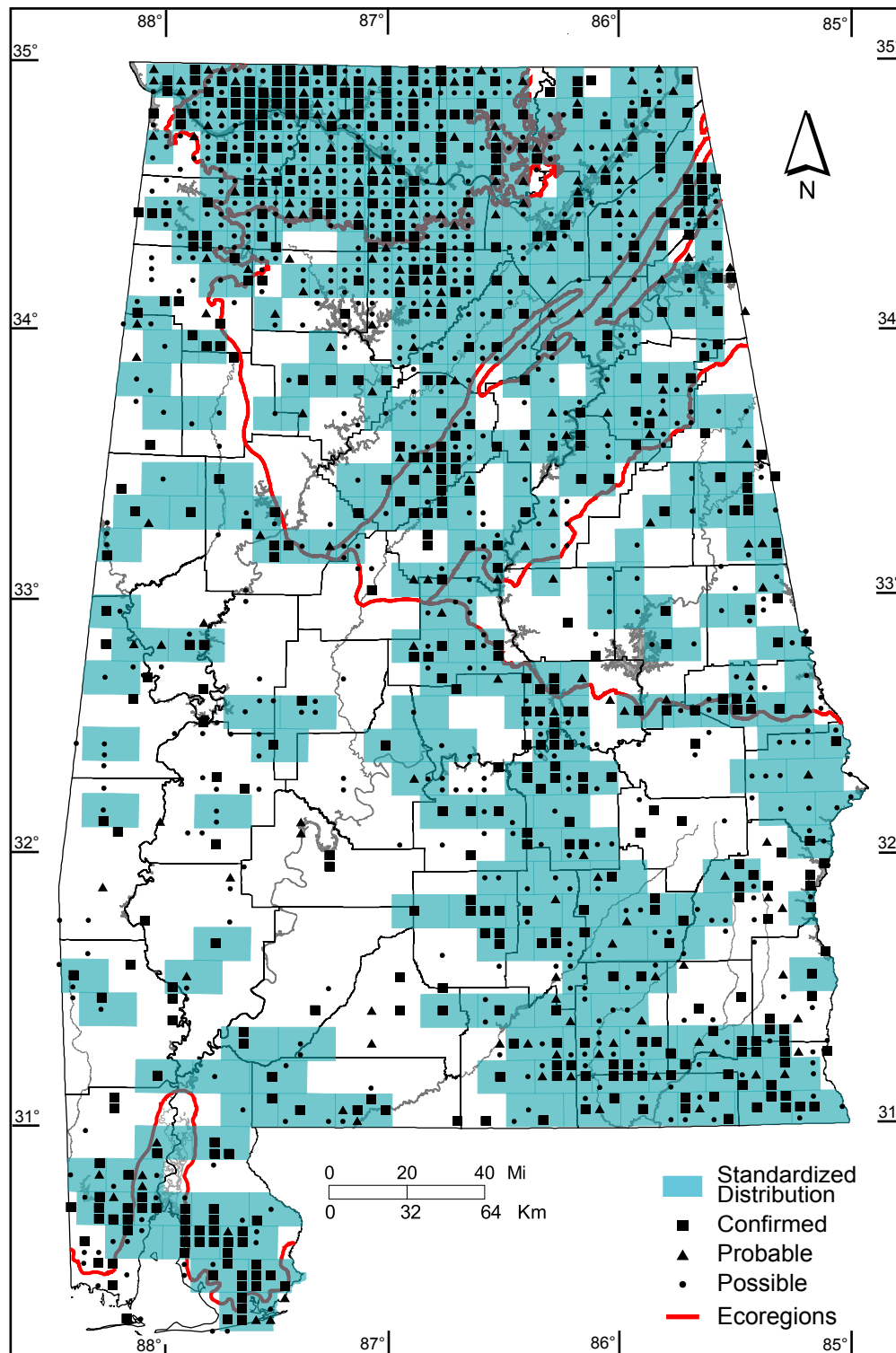
Southern Coastal Plain: 5 of 7 (71%)

Number of Blocks with Breeding Evidence

Total: 1353 of 5087 (27%)

Confirmed: 540 of 5087 (11%)

Safe Dates: March 15 - July 31



©Alabama Breeding Bird Atlas
All Rights Reserved