

Blue-winged Warbler (*Vermivora pinus*)

Number of Priority Blocks with Breeding Evidence

Total: 34 of 585 (6%)

Confirmed: 5 (15%)

Probable: 6 (17%)

Possible: 23 (68%)

Number of Priority Blocks in Ecoregions with Breeding Evidence

Interior Plateau: 4 of 52 (8%)

Southwestern Appalachians: 14 of 124 (11%)

Ridge and Valley: 8 of 72 (11%)

Piedmont: 3 of 76 (4%)

Southeastern Plains: 5 of 254 (2%)

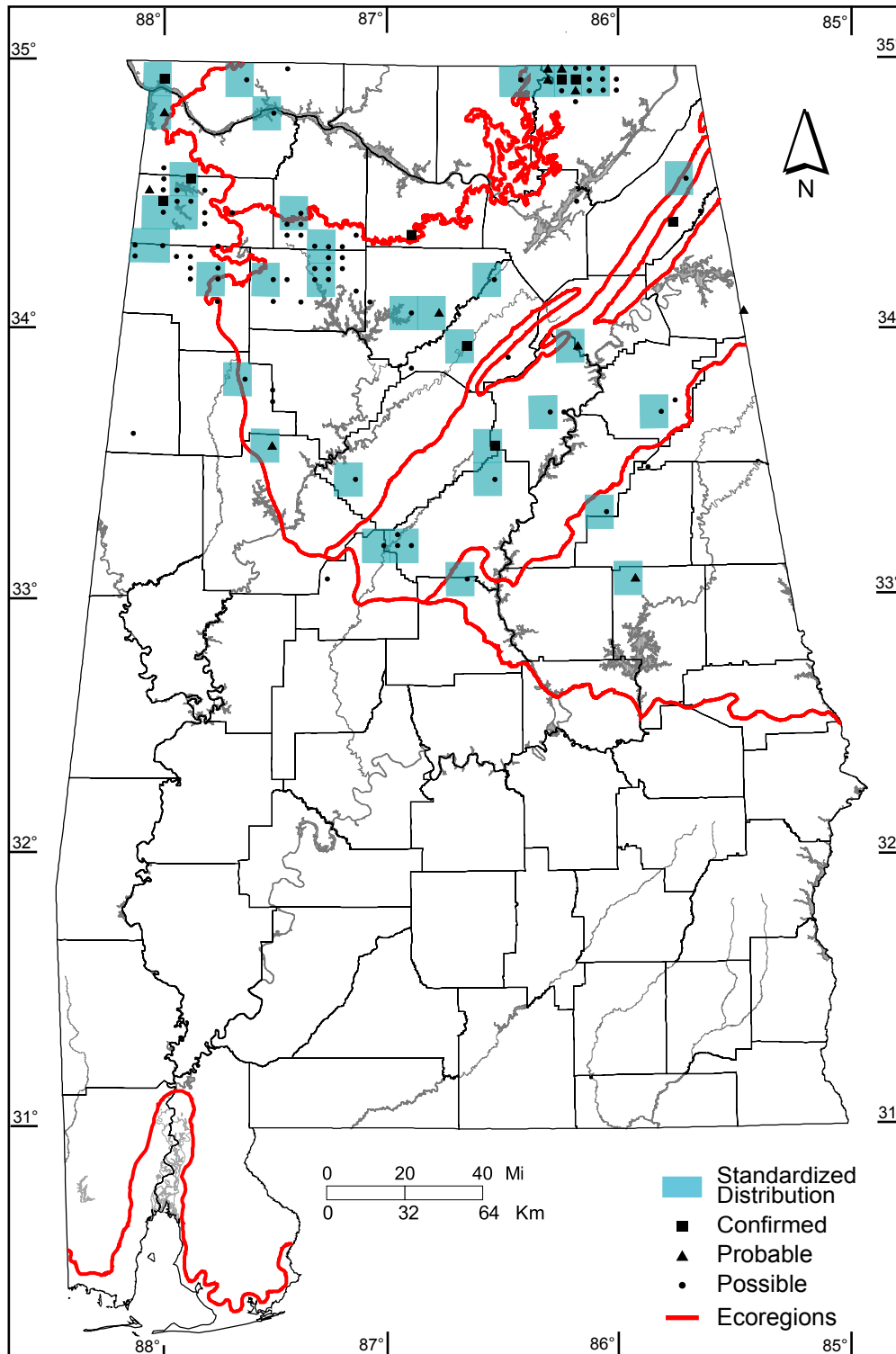
Southern Coastal Plain: 0 of 7 (0%)

Number of Blocks with Breeding Evidence

Total: 105 of 5087 (2%)

Confirmed: 9 of 5087 (<1%)

Safe Dates: May 15 - July 10



©Alabama Breeding Bird Atlas
All Rights Reserved

Northern Parula (*Parula americana*)

Number of Priority Blocks with Breeding Evidence

Total: 374 of 585 (64%)

Confirmed: 28 (8%)

Probable: 132 (35%)

Possible: 214 (57%)

Number of Priority Blocks in Ecoregions with Breeding Evidence

Interior Plateau: 21 of 52 (40%)

Southwestern Appalachians: 43 of 124 (35%)

Ridge and Valley: 31 of 72 (43%)

Piedmont: 72 of 76 (95%)

Southeastern Plains: 204 of 254 (80%)

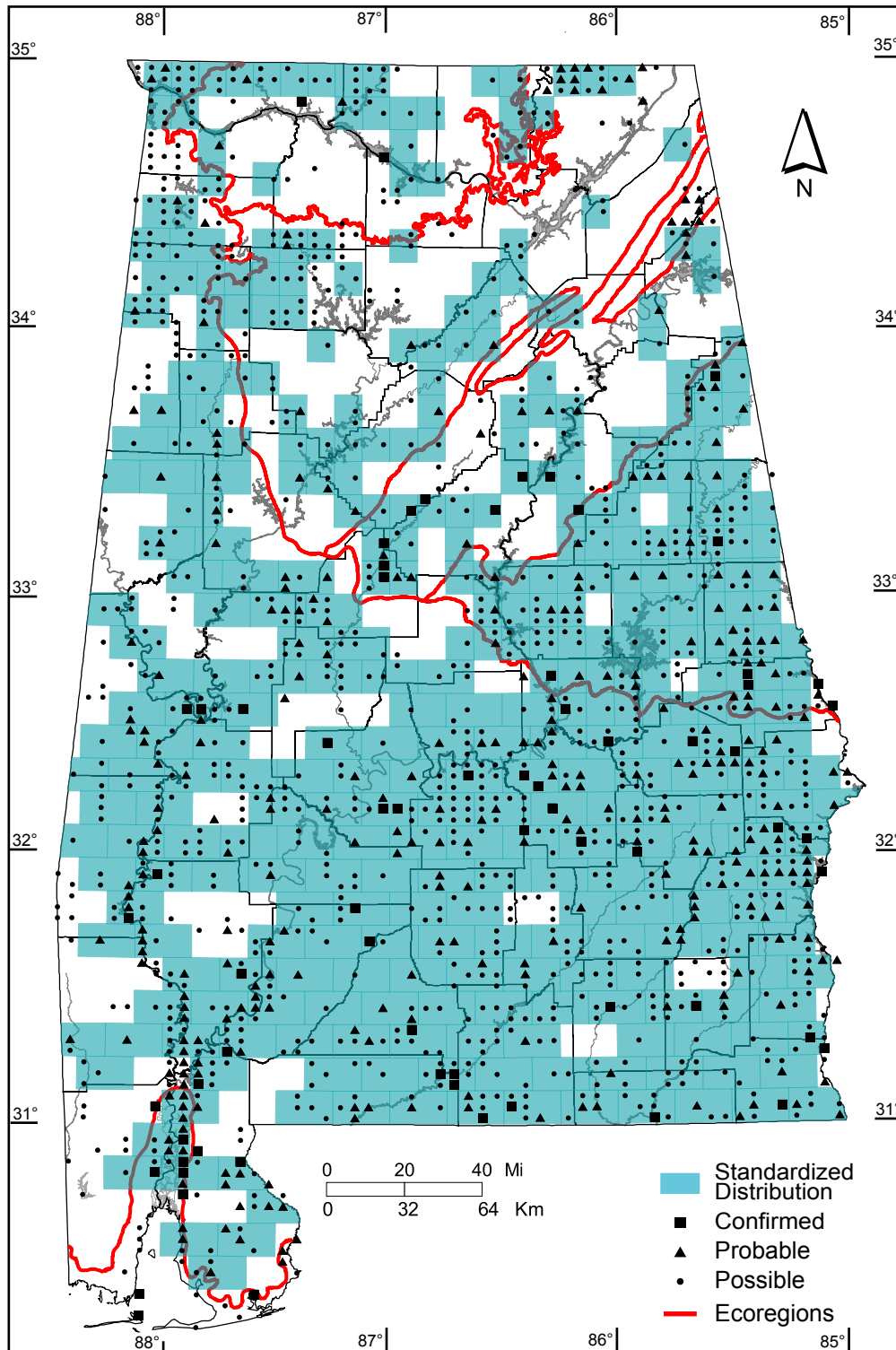
Southern Coastal Plain: 3 of 7 (43%)

Number of Blocks with Breeding Evidence

Total: 1398 of 5087 (27%)

Confirmed: 68 of 5087 (1%)

Safe Dates: May 15 - July 10



©Alabama Breeding Bird Atlas
All Rights Reserved

Yellow Warbler (*Dendroica petechia*)

Number of Priority Blocks with Breeding Evidence

Total: 8 of 585 (1%)

Confirmed: 0 (0%)

Probable: 1 (13%)

Possible: 7 (87%)

Number of Priority Blocks in Ecoregions with Breeding Evidence

Interior Plateau: 2 of 52 (4%)

Southwestern Appalachians: 3 of 124 (2%)

Ridge and Valley: 1 of 72 (1%)

Piedmont: 0 of 76 (0%)

Southeastern Plains: 2 of 254 (1%)

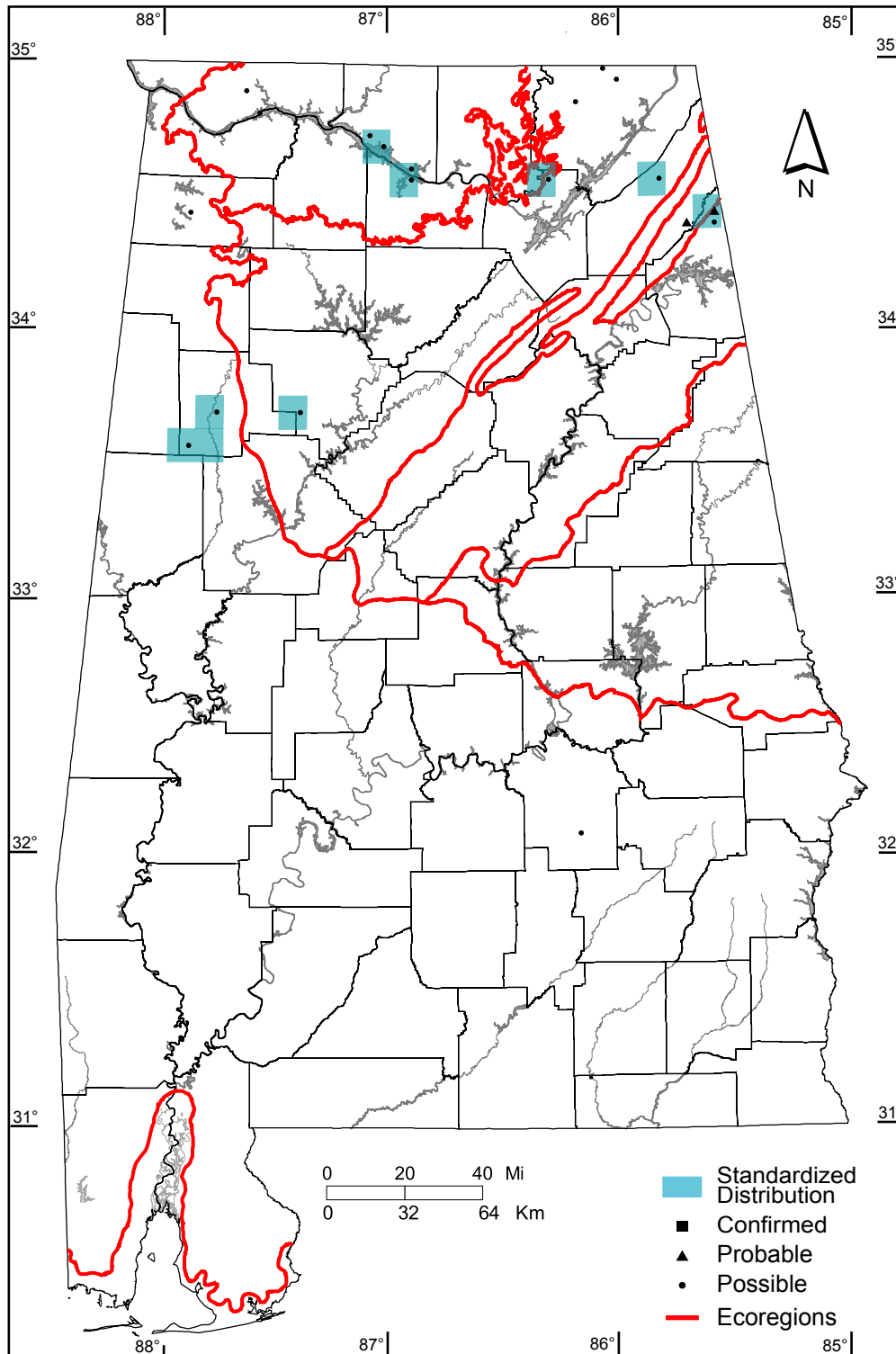
Southern Coastal Plain: 0 of 7 (0%)

Number of Blocks with Breeding Evidence

Total: 19 of 5087 (<1%)

Confirmed: 0 of 5087 (0%)

Safe Dates: May 20 - July 5



©Alabama Breeding Bird Atlas
All Rights Reserved

Chestnut-sided Warbler (*Dendroica pensylvanica*)

Number of Priority Blocks with Breeding Evidence

Total: 0 of 585 (0%)

Confirmed: 0 (0%)

Probable: 0 (0%)

Possible: 0 (0%)

Number of Priority Blocks in Ecoregions with Breeding Evidence

Interior Plateau: 0 of 52 (0%)

Southwestern Appalachians: 0 of 124 (0%)

Ridge and Valley: 0 of 72 (0%)

Piedmont: 0 of 76 (0%)

Southeastern Plains: 0 of 254 (0%)

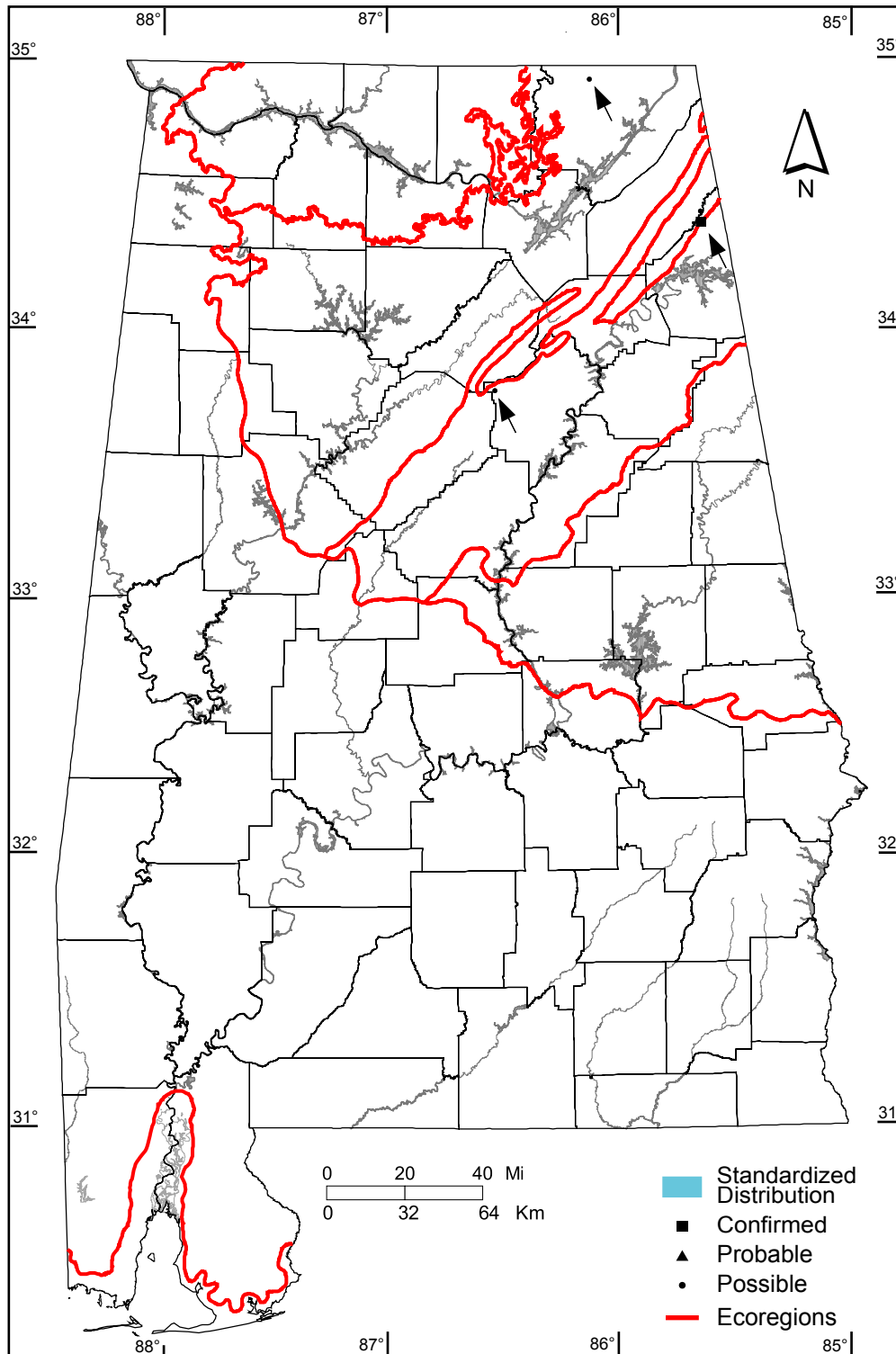
Southern Coastal Plain: 0 of 7 (0%)

Number of Blocks with Breeding Evidence

Total: 4 of 5087 (<1%)

Confirmed: 1 of 5087 (<1%)

Safe Dates: May 25 - July 10



©Alabama Breeding Bird Atlas
All Rights Reserved

Black-throated Green Warbler (*Dendroica virens*)

Number of Priority Blocks with Breeding Evidence

Total: 29 of 585 (5%)

Confirmed: 4 (14%)

Probable: 8 (27%)

Possible: 17 (59%)

Number of Priority Blocks in Ecoregions with Breeding Evidence

Interior Plateau: 0 of 52 (0%)

Southwestern Appalachians: 10 of 124 (8%)

Ridge and Valley: 10 of 72 (14%)

Piedmont: 8 of 76 (11%)

Southeastern Plains: 1 of 254 (<1%)

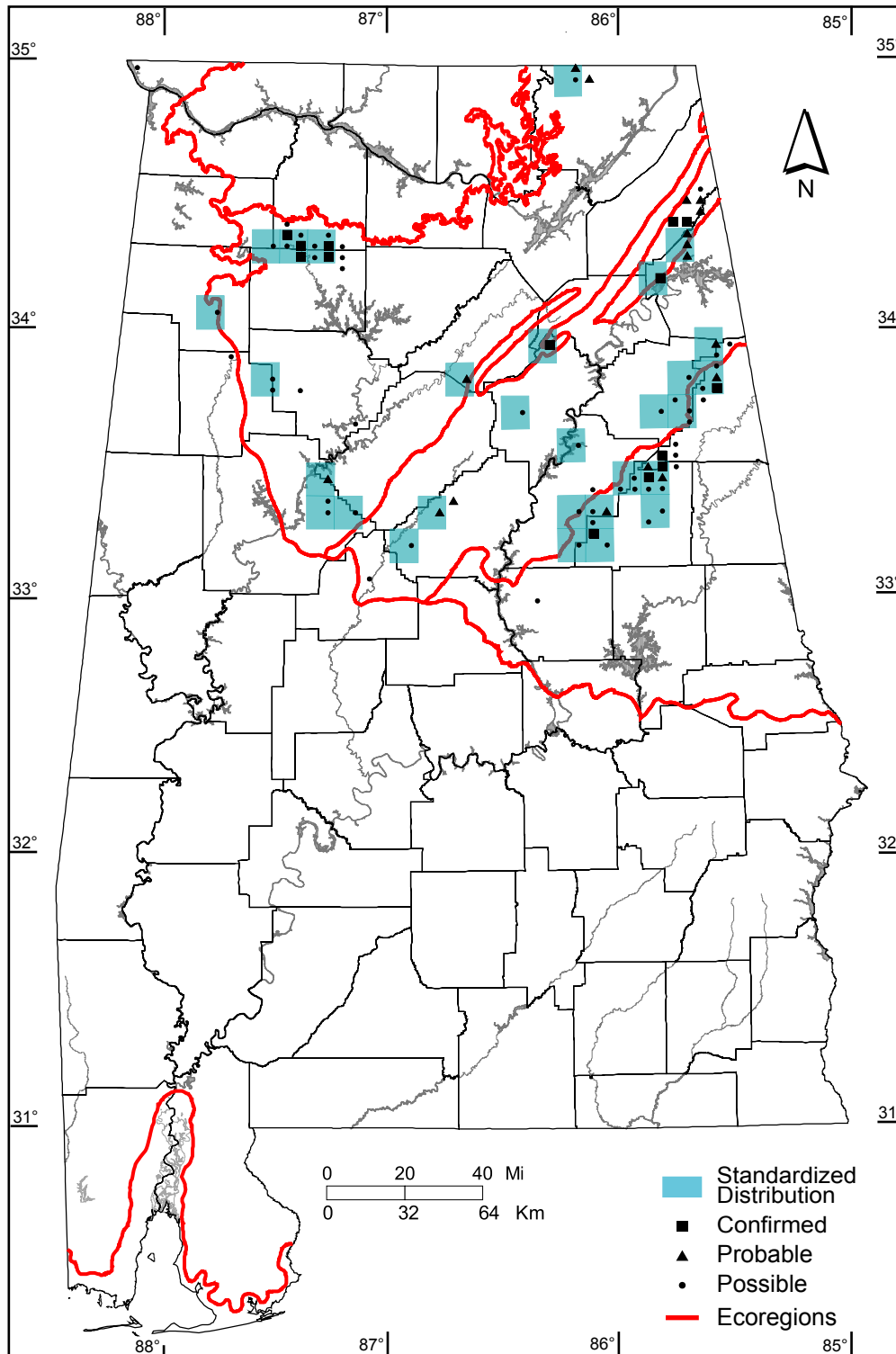
Southern Coastal Plain: 0 of 7 (0%)

Number of Blocks with Breeding Evidence

Total: 85 of 5087 (2%)

Confirmed: 14 of 5087 (<1%)

Safe Dates: May 25 - July 10



©Alabama Breeding Bird Atlas
All Rights Reserved

Yellow-throated Warbler (*Dendroica dominica*)

Number of Priority Blocks with Breeding Evidence

Total: 181 of 585 (31%)

Confirmed: 6 (3%)

Probable: 27 (15%)

Possible: 148 (82%)

Number of Priority Blocks in Ecoregions with Breeding Evidence

Interior Plateau: 12 of 52 (23%)

Southwestern Appalachians: 35 of 124 (28%)

Ridge and Valley: 21 of 72 (29%)

Piedmont: 25 of 76 (33%)

Southeastern Plains: 87 of 254 (34%)

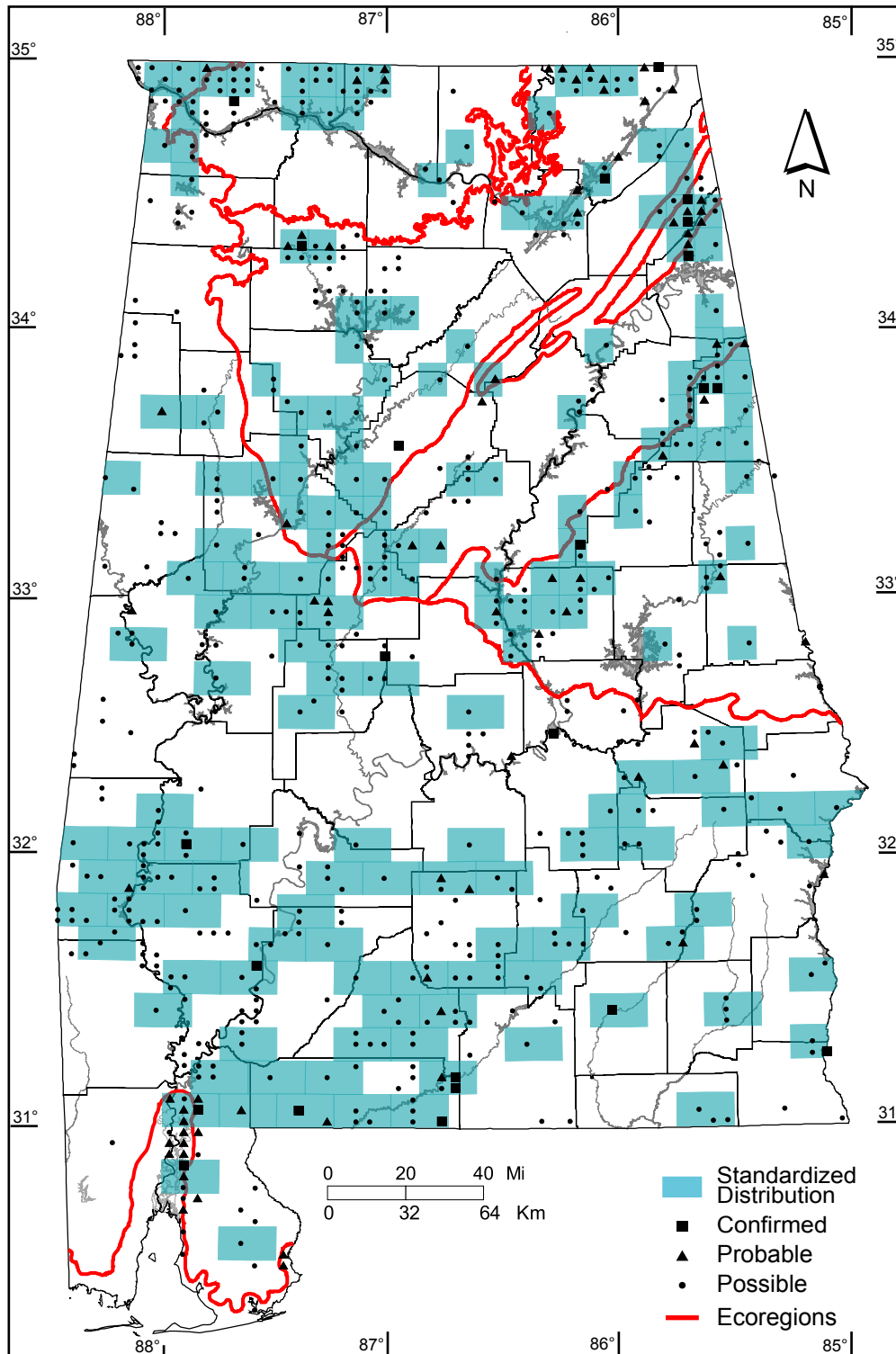
Southern Coastal Plain: 1 of 7 (14%)

Number of Blocks with Breeding Evidence

Total: 605 of 5087 (12%)

Confirmed: 23 of 5087 (<1%)

Safe Dates: April 25 - July 10



©Alabama Breeding Bird Atlas
All Rights Reserved

Pine Warbler (*Dendroica pinus*)

Number of Priority Blocks with Breeding Evidence

Total: 561 of 585 (96%)

Confirmed: 148 (26%)

Probable: 200 (36%)

Possible: 213 (38%)

Number of Priority Blocks in Ecoregions with Breeding Evidence

Interior Plateau: 42 of 52 (81%)

Southwestern Appalachians: 119 of 124 (96%)

Ridge and Valley: 70 of 72 (97%)

Piedmont: 75 of 76 (99%)

Southeastern Plains: 249 of 254 (98%)

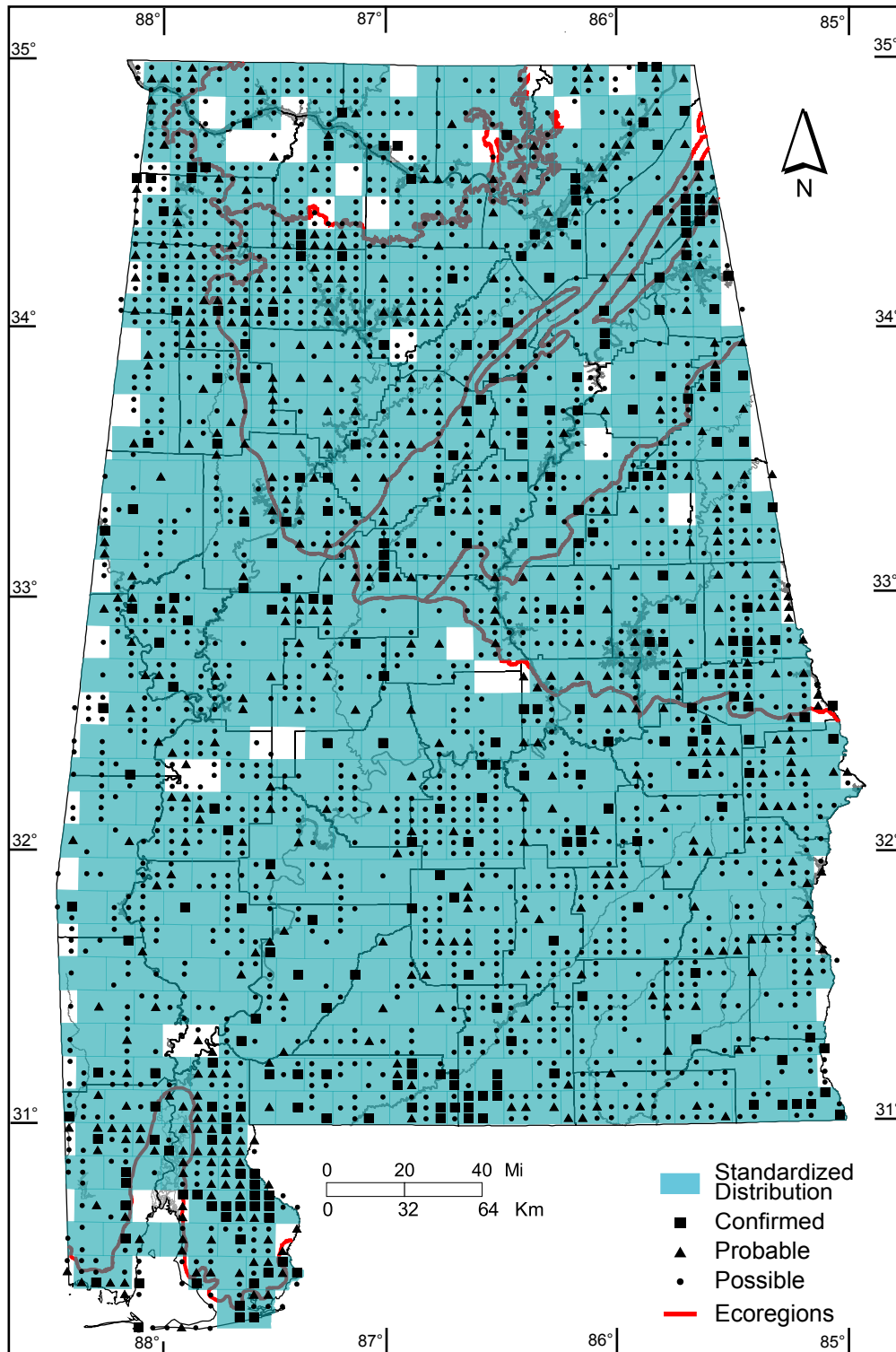
Southern Coastal Plain: 6 of 7 (86%)

Number of Blocks with Breeding Evidence

Total: 2344 of 5087 (46%)

Confirmed: 282 of 5087 (6%)

Safe Dates: April 15 - July 10



©Alabama Breeding Bird Atlas
All Rights Reserved

Prairie Warbler (*Dendroica discolor*)

Number of Priority Blocks with Breeding Evidence

Total: 434 of 585 (74%)

Confirmed: 77 (18%)

Probable: 161 (37%)

Possible: 196 (45%)

Number of Priority Blocks in Ecoregions with Breeding Evidence

Interior Plateau: 19 of 52 (37%)

Southwestern Appalachians: 109 of 124 (88%)

Ridge and Valley: 55 of 72 (76%)

Piedmont: 75 of 76 (99%)

Southeastern Plains: 176 of 254 (69%)

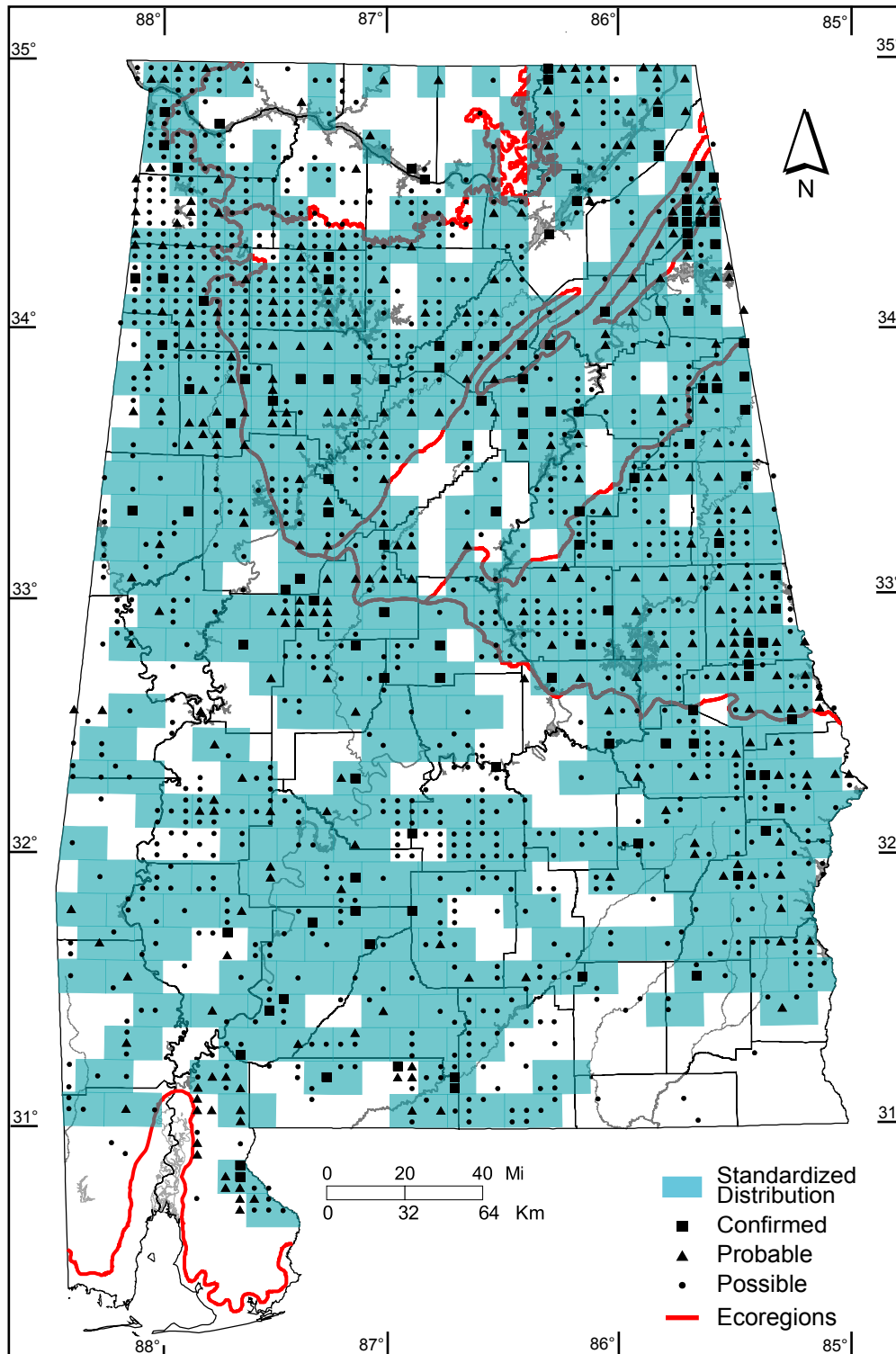
Southern Coastal Plain: 0 of 7 (0%)

Number of Blocks with Breeding Evidence

Total: 1473 of 5087 (29%)

Confirmed: 125 of 5087 (2%)

Safe Dates: May 15 - July 10



©Alabama Breeding Bird Atlas
All Rights Reserved

Cerulean Warbler (*Dendroica cerulea*)

Number of Priority Blocks with Breeding Evidence

Total: 2 of 585 (<1%)

Confirmed: 1 (50%)

Probable: 0 (0%)

Possible: 1 (50%)

Number of Priority Blocks in Ecoregions with Breeding Evidence

Interior Plateau: 0 of 52 (0%)

Southwestern Appalachians: 2 of 124 (2%)

Ridge and Valley: 0 of 72 (0%)

Piedmont: 0 of 76 (0%)

Southeastern Plains: 0 of 254 (0%)

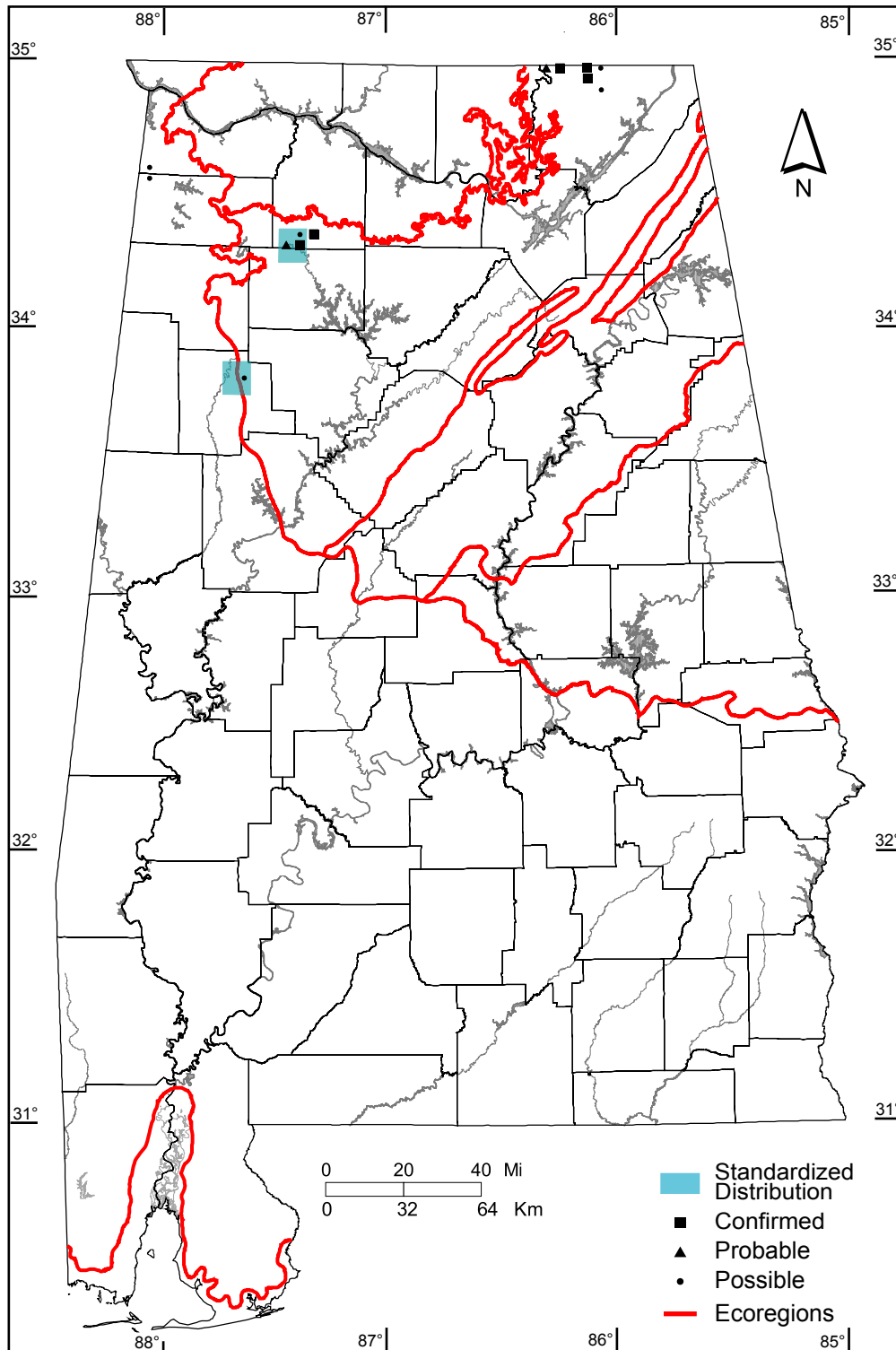
Southern Coastal Plain: 0 of 7 (0%)

Number of Blocks with Breeding Evidence

Total: 14 of 5087 (<1%)

Confirmed: 5 of 5087 (<1%)

Safe Dates: May 15 - July 10



©Alabama Breeding Bird Atlas
All Rights Reserved

Black-and-white Warbler (*Mniotilta varia*)

Number of Priority Blocks with Breeding Evidence

Total: 213 of 585 (36%)

Confirmed: 19 (9%)

Probable: 51 (24%)

Possible: 143 (67%)

Number of Priority Blocks in Ecoregions with Breeding Evidence

Interior Plateau: 10 of 52 (19%)

Southwestern Appalachians: 64 of 124 (52%)

Ridge and Valley: 32 of 72 (44%)

Piedmont: 55 of 76 (72%)

Southeastern Plains: 52 of 254 (20%)

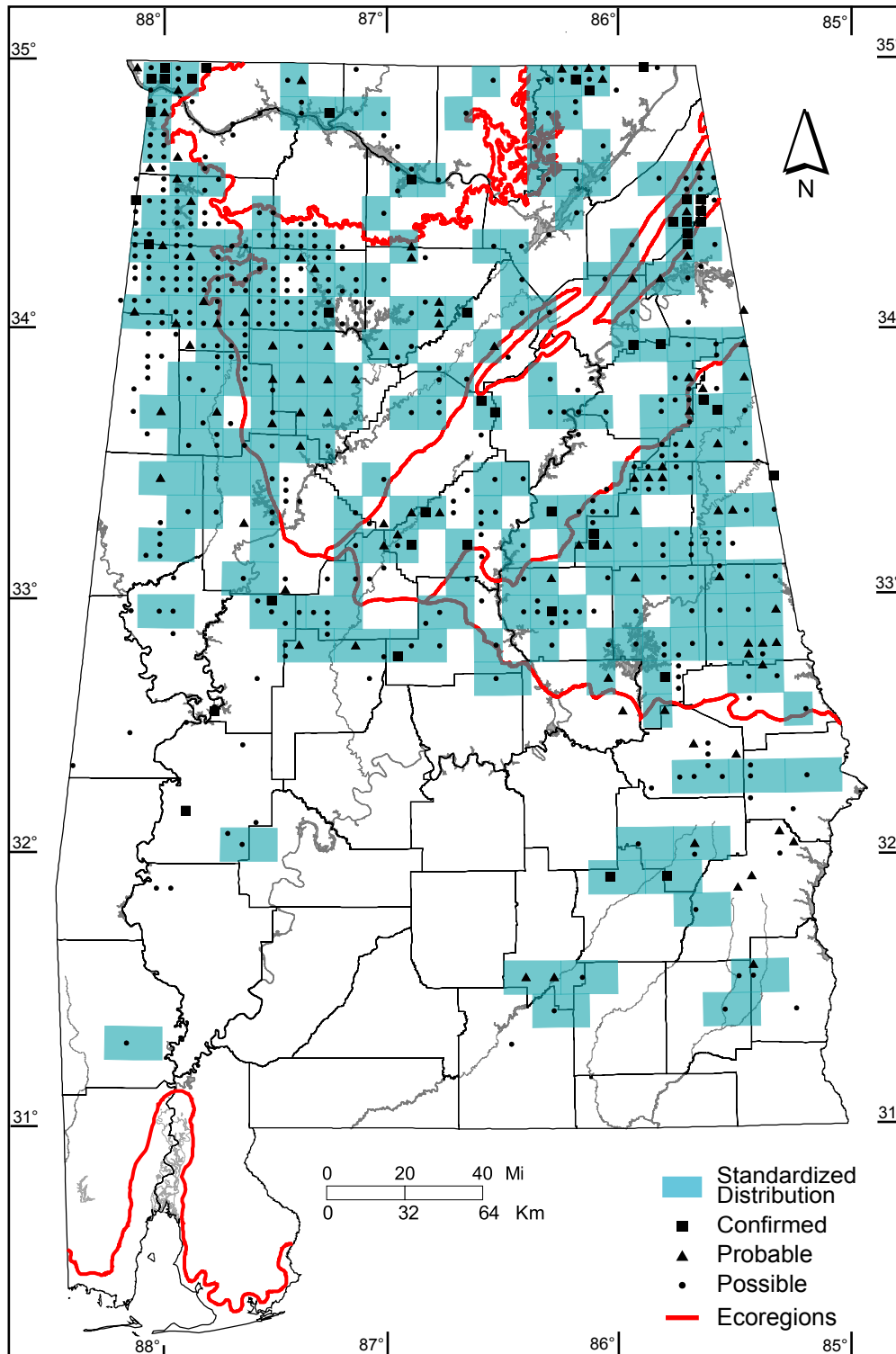
Southern Coastal Plain: 0 of 7 (0%)

Number of Blocks with Breeding Evidence

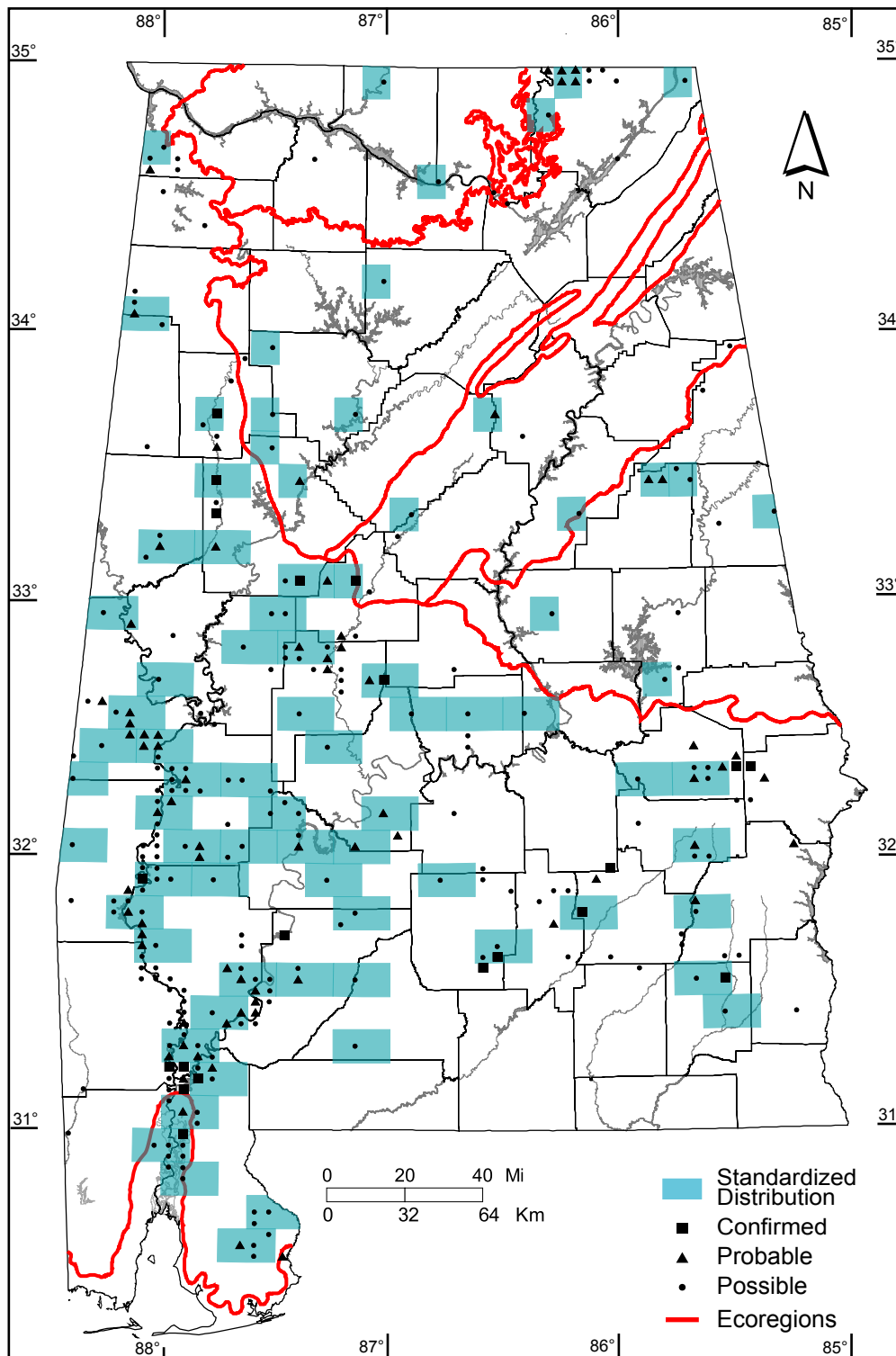
Total: 567 of 5087 (11%)

Confirmed: 44 of 5087 (1%)

Safe Dates: May 10 - July 10



©Alabama Breeding Bird Atlas
All Rights Reserved



American Redstart (*Setophaga ruticilla*)

Number of Priority Blocks with Breeding Evidence

Total: 79 of 585 (14%)

Confirmed: 6 (8%)

Probable: 23 (29%)

Possible: 50 (63%)

Number of Priority Blocks in Ecoregions with Breeding Evidence

Interior Plateau: 2 of 52 (4%)

Southwestern Appalachians: 9 of 124 (7%)

Ridge and Valley: 3 of 72 (4%)

Piedmont: 5 of 76 (7%)

Southeastern Plains: 58 of 254 (23%)

Southern Coastal Plain: 2 of 7 (29%)

Number of Blocks with Breeding Evidence

Total: 297 of 5087 (6%)

Confirmed: 20 of 5087 (<1%)

Safe Dates: June 1 - July 5



©Alabama Breeding Bird Atlas
All Rights Reserved

Prothonotary Warbler (*Protonotaria citrea*)

Number of Priority Blocks with Breeding Evidence

Total: 196 of 585 (34%)

Confirmed: 24 (12%)

Probable: 52 (27%)

Possible: 120 (61%)

Number of Priority Blocks in Ecoregions with Breeding Evidence

Interior Plateau: 28 of 52 (54%)

Southwestern Appalachians: 23 of 124 (19%)

Ridge and Valley: 10 of 72 (14%)

Piedmont: 6 of 76 (8%)

Southeastern Plains: 125 of 254 (49%)

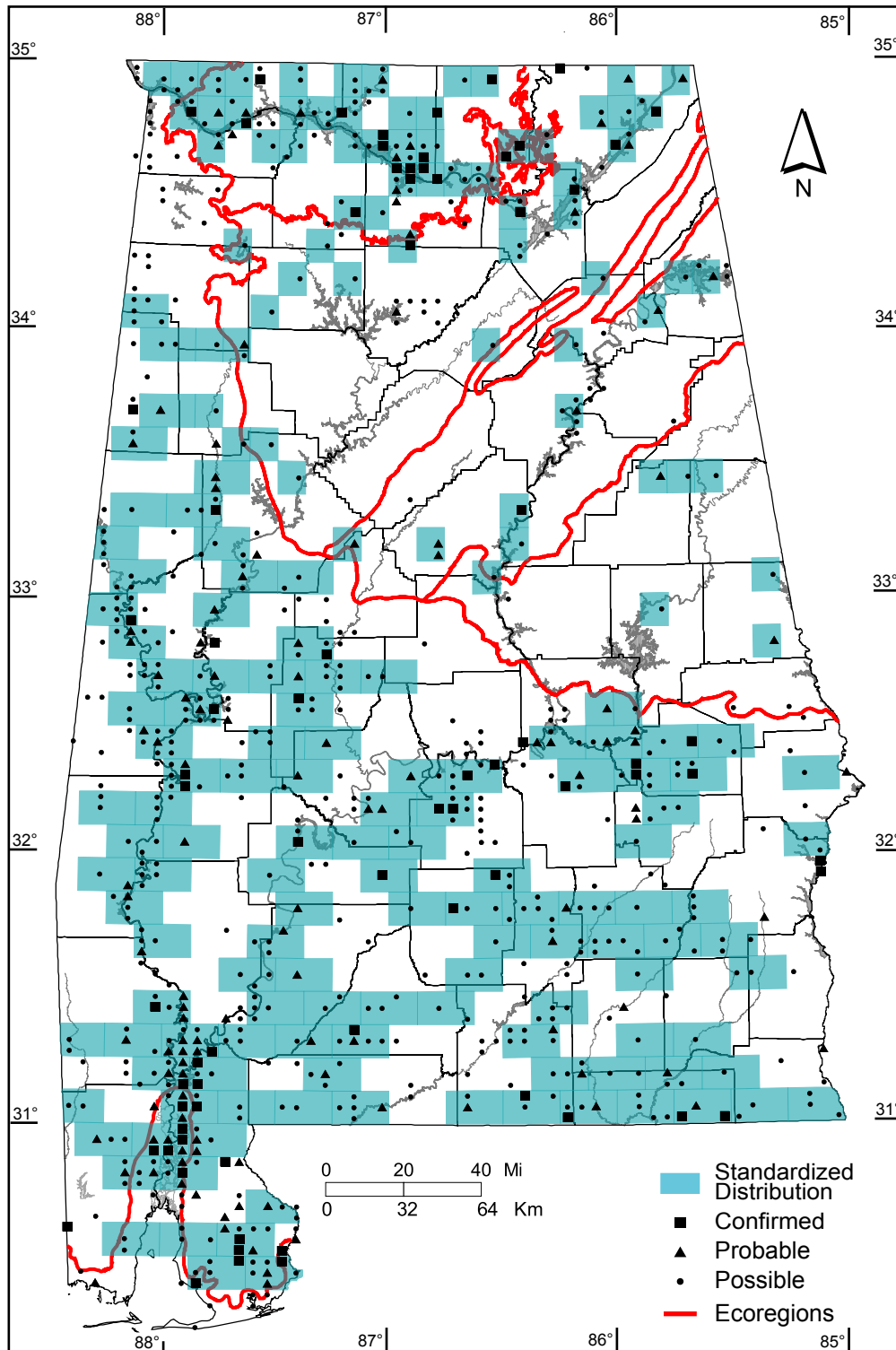
Southern Coastal Plain: 4 of 7 (57%)

Number of Blocks with Breeding Evidence

Total: 734 of 5087 (14%)

Confirmed: 74 of 5087 (1%)

Safe Dates: May 10 - July 15



©Alabama Breeding Bird Atlas
All Rights Reserved

Worm-eating Warbler (*Helmitheros vermivorum*)

Number of Priority Blocks with Breeding Evidence

Total: 161 of 585 (28%)

Confirmed: 13 (8%)

Probable: 23 (14%)

Possible: 125 (78%)

Number of Priority Blocks in Ecoregions with Breeding Evidence

Interior Plateau: 7 of 52 (13%)

Southwestern Appalachians: 66 of 124 (53%)

Ridge and Valley: 32 of 72 (44%)

Piedmont: 20 of 76 (26%)

Southeastern Plains: 36 of 254 (14%)

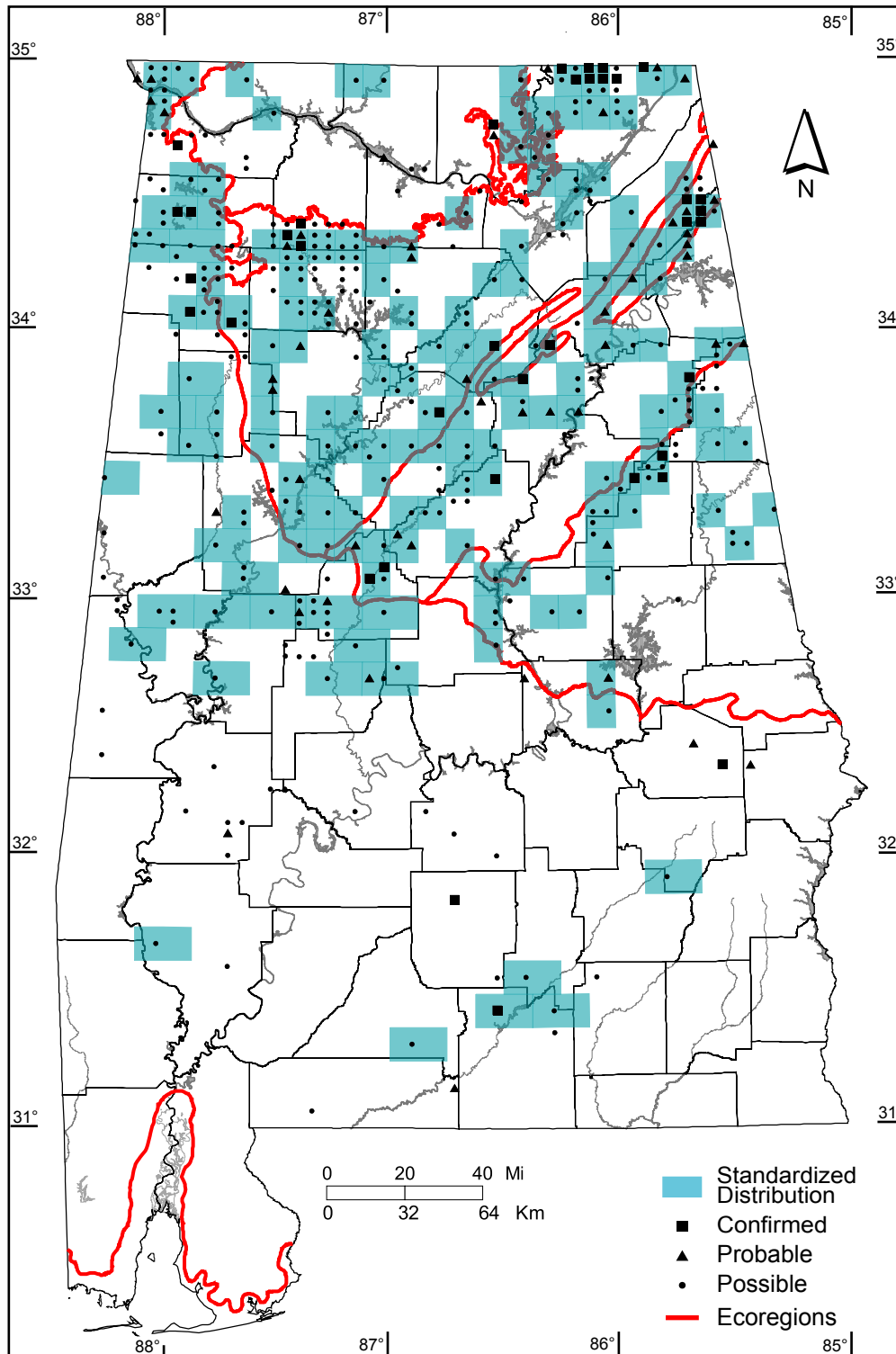
Southern Coastal Plain: 0 of 7 (0%)

Number of Blocks with Breeding Evidence

Total: 406 of 5087 (8%)

Confirmed: 37 of 5087 (1%)

Safe Dates: May 20 - July 10



©Alabama Breeding Bird Atlas
All Rights Reserved

Swainson's Warbler (*Limnothlypis swainsonii*)

Number of Priority Blocks with Breeding Evidence

Total: 156 of 585 (27%)

Confirmed: 4 (3%)

Probable: 33 (21%)

Possible: 119 (76%)

Number of Priority Blocks in Ecoregions with Breeding Evidence

Interior Plateau: 2 of 52 (4%)

Southwestern Appalachians: 15 of 124 (12%)

Ridge and Valley: 15 of 72 (21%)

Piedmont: 21 of 76 (28%)

Southeastern Plains: 101 of 254 (40%)

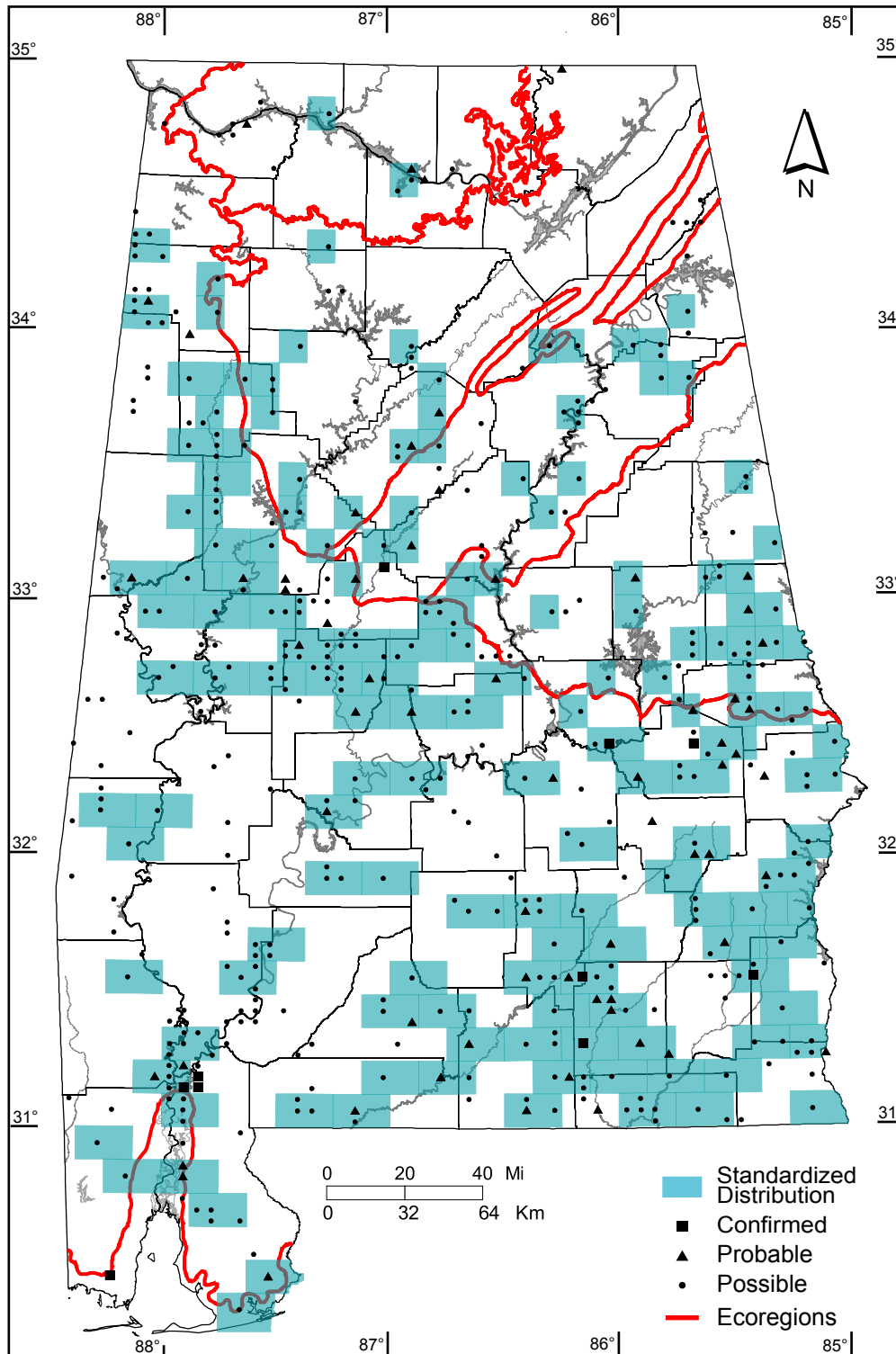
Southern Coastal Plain: 2 of 7 (29%)

Number of Blocks with Breeding Evidence

Total: 457 of 5087 (9%)

Confirmed: 10 of 5087 (<1%)

Safe Dates: May 1 - July 10



©Alabama Breeding Bird Atlas
All Rights Reserved

Ovenbird (*Seiurus aurocapilla*)

Number of Priority Blocks with Breeding Evidence

Total: 86 of 585 (15%)

Confirmed: 1 (1%)

Probable: 18 (21%)

Possible: 67 (78%)

Number of Priority Blocks in Ecoregions with Breeding Evidence

Interior Plateau: 1 of 52 (2%)

Southwestern Appalachians: 39 of 124 (31%)

Ridge and Valley: 22 of 72 (31%)

Piedmont: 17 of 76 (22%)

Southeastern Plains: 7 of 254 (3%)

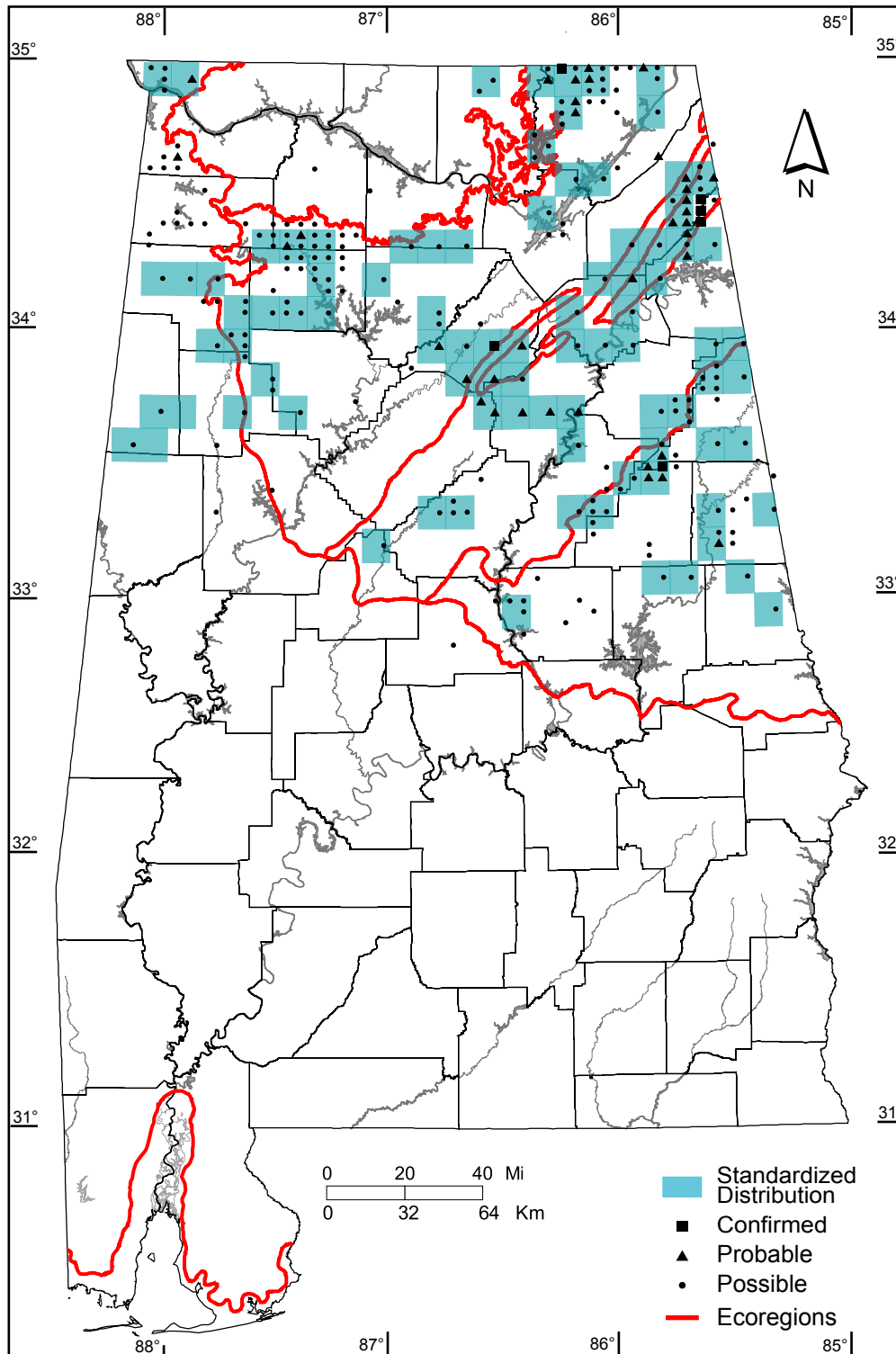
Southern Coastal Plain: 0 of 7 (0%)

Number of Blocks with Breeding Evidence

Total: 238 of 5087 (5%)

Confirmed: 6 of 5087 (<1%)

Safe Dates: May 20 - July 10



©Alabama Breeding Bird Atlas
All Rights Reserved

Louisiana Waterthrush (*Seiurus motacilla*)

Number of Priority Blocks with Breeding Evidence

Total: 279 of 585 (48%)

Confirmed: 25 (9%)

Probable: 71 (25%)

Possible: 183 (66%)

Number of Priority Blocks in Ecoregions with Breeding Evidence

Interior Plateau: 17 of 52 (33%)

Southwestern Appalachians: 69 of 124 (56%)

Ridge and Valley: 37 of 72 (51%)

Piedmont: 46 of 76 (61%)

Southeastern Plains: 110 of 254 (43%)

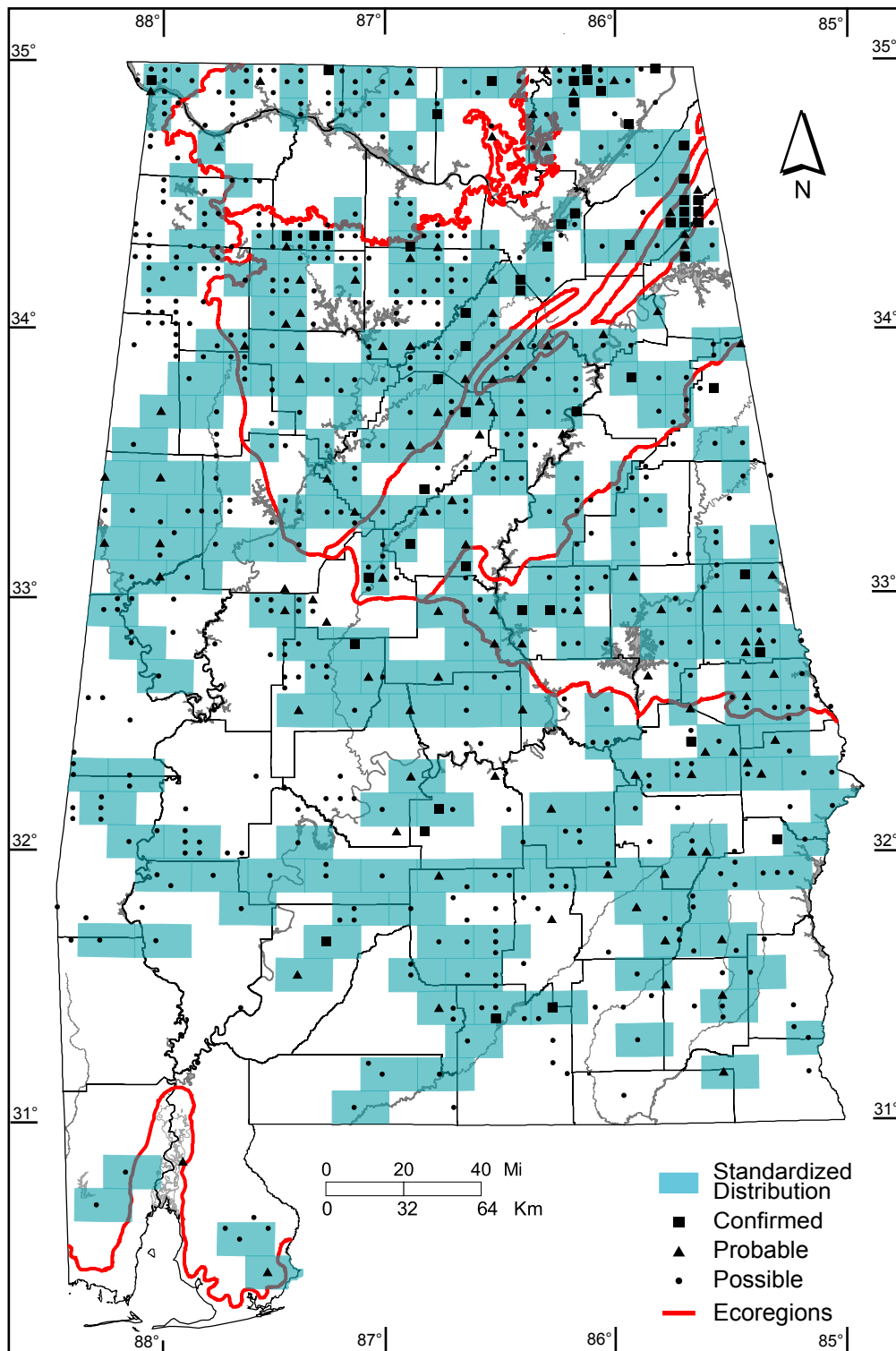
Southern Coastal Plain: 0 of 7 (0%)

Number of Blocks with Breeding Evidence

Total: 719 of 5087 (14%)

Confirmed: 54 of 5087 (1%)

Safe Dates: April 20 - July 10



©Alabama Breeding Bird Atlas
All Rights Reserved

Kentucky Warbler (*Oporornis formosus*)

Number of Priority Blocks with Breeding Evidence

Total: 470 of 585 (80%)

Confirmed: 26 (5%)

Probable: 125 (27%)

Possible: 319 (68%)

Number of Priority Blocks in Ecoregions with Breeding Evidence

Interior Plateau: 38 of 52 (73%)

Southwestern Appalachians: 107 of 124 (86%)

Ridge and Valley: 65 of 72 (90%)

Piedmont: 68 of 76 (89%)

Southeastern Plains: 188 of 254 (74%)

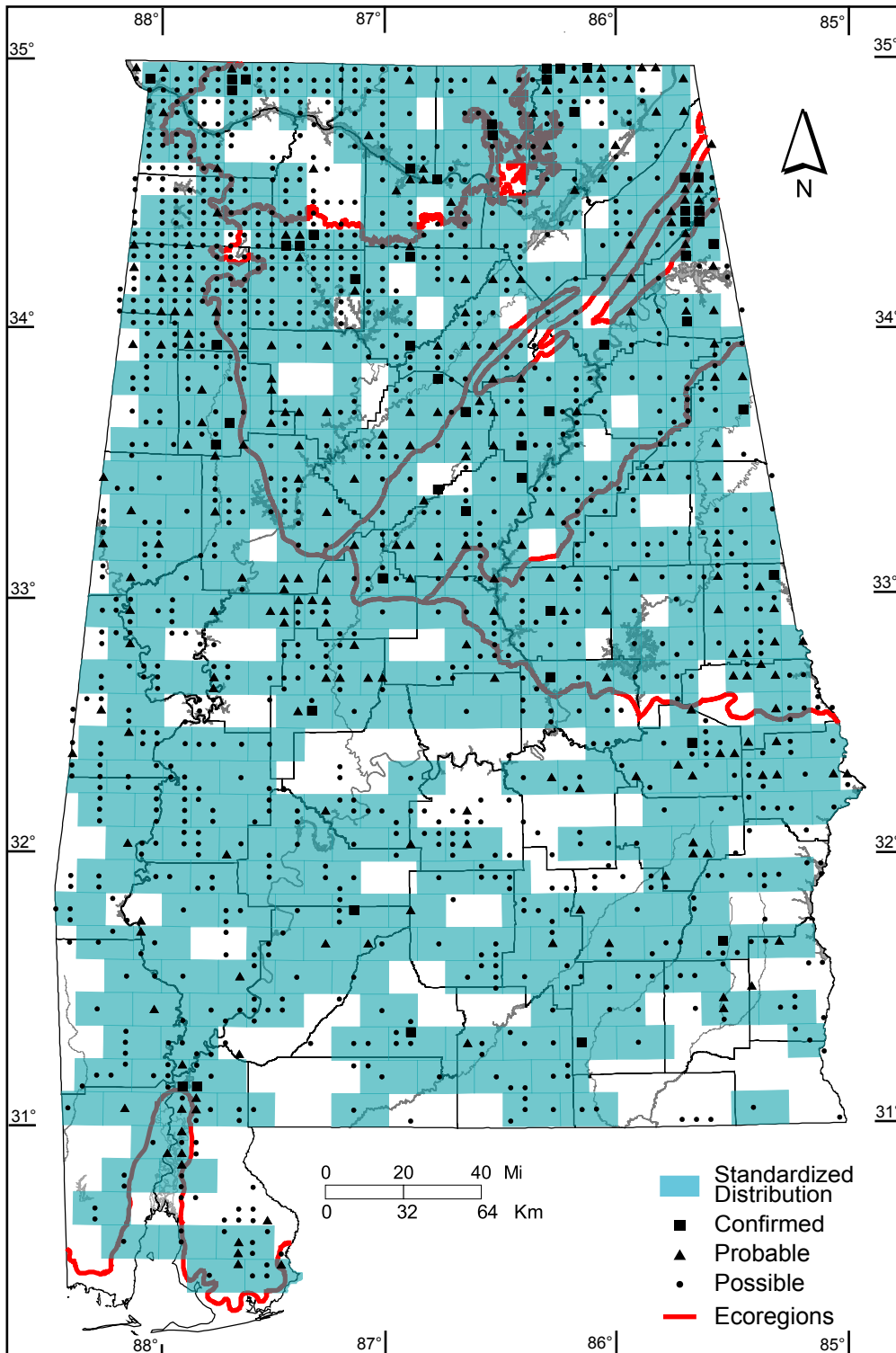
Southern Coastal Plain: 4 of 7 (57%)

Number of Blocks with Breeding Evidence

Total: 1418 of 5087 (28%)

Confirmed: 52 of 5087 (1%)

Safe Dates: May 15 - July 10



©Alabama Breeding Bird Atlas
All Rights Reserved

Common Yellowthroat (*Geothlypis trichas*)

Number of Priority Blocks with Breeding Evidence

Total: 572 of 585 (98%)

Confirmed: 47 (8%)

Probable: 300 (53%)

Possible: 225 (39%)

Number of Priority Blocks in Ecoregions with Breeding Evidence

Interior Plateau: 52 of 52 (100%)

Southwestern Appalachians: 121 of 124 (98%)

Ridge and Valley: 70 of 72 (97%)

Piedmont: 73 of 76 (96%)

Southeastern Plains: 251 of 254 (99%)

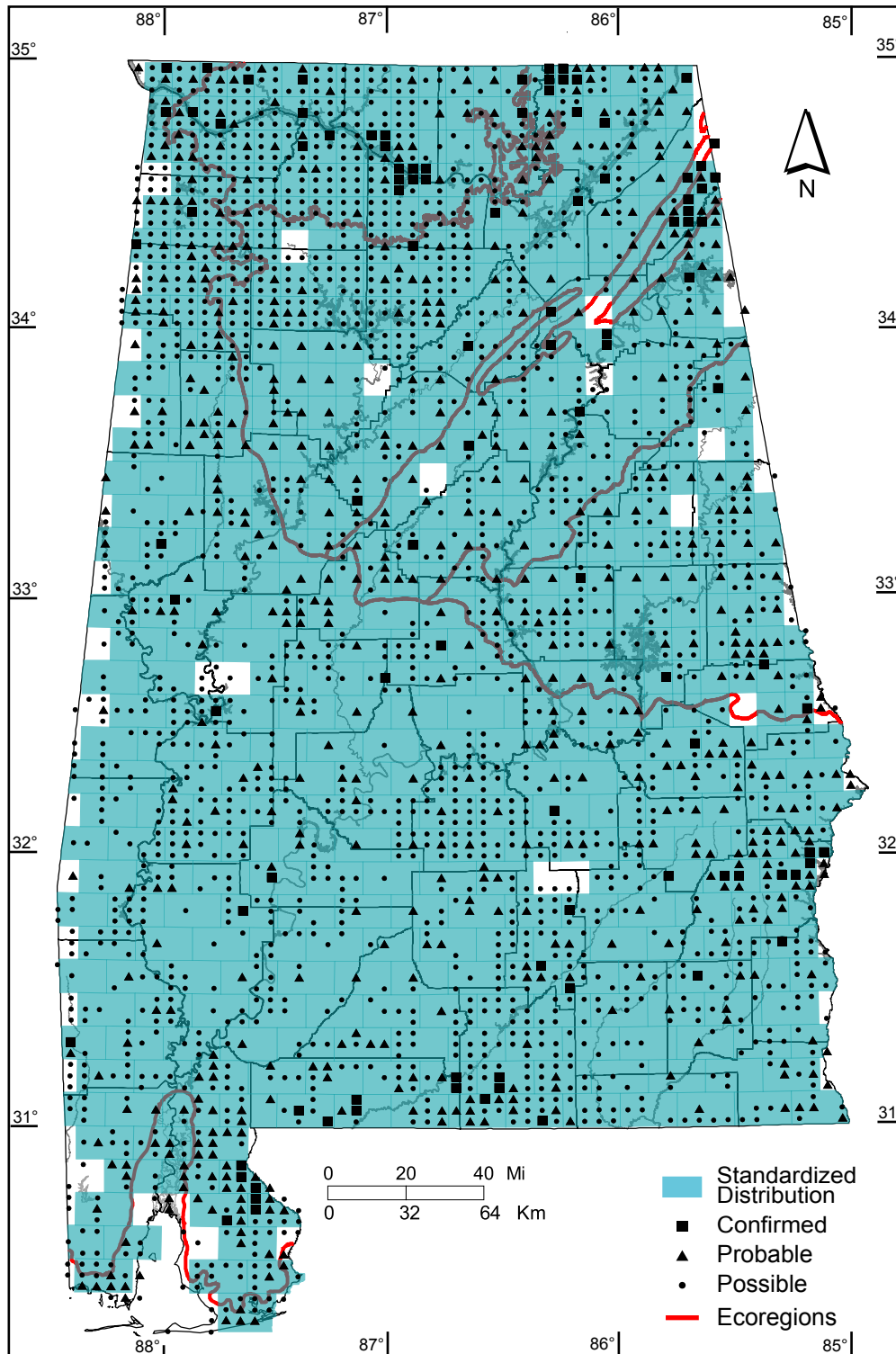
Southern Coastal Plain: 5 of 7 (71%)

Number of Blocks with Breeding Evidence

Total: 2438 of 5087 (48%)

Confirmed: 101 of 5087 (2%)

Safe Dates: May 10 - July 10



©Alabama Breeding Bird Atlas
All Rights Reserved

Hooded Warbler (*Wilsonia citrina*)

Number of Priority Blocks with Breeding Evidence

Total: 444 of 585 (76%)

Confirmed: 22 (5%)

Probable: 215 (48%)

Possible: 207 (47%)

Number of Priority Blocks in Ecoregions with Breeding Evidence

Interior Plateau: 6 of 52 (12%)

Southwestern Appalachians: 89 of 124 (72%)

Ridge and Valley: 56 of 72 (78%)

Piedmont: 75 of 76 (99%)

Southeastern Plains: 213 of 254 (84%)

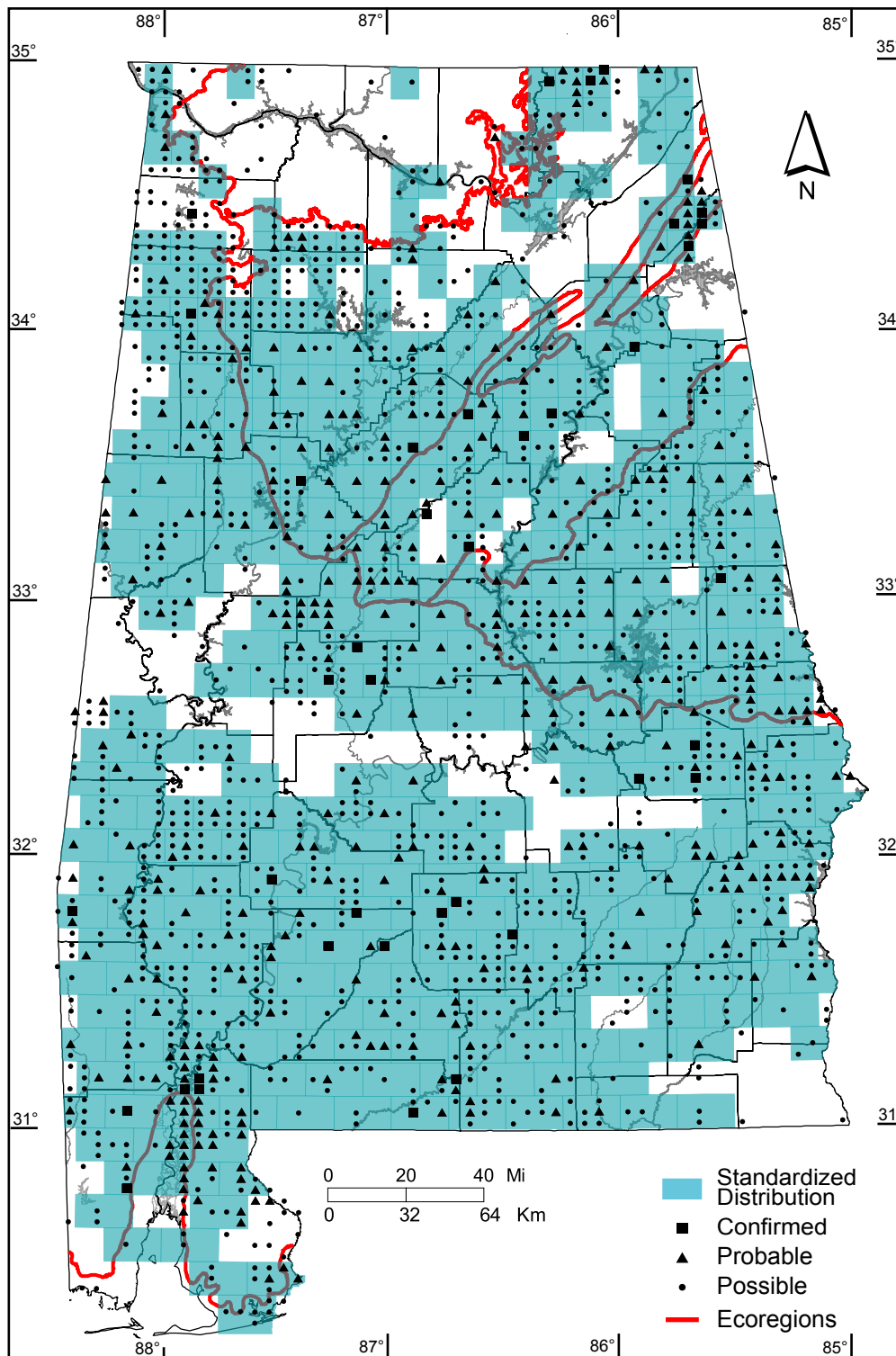
Southern Coastal Plain: 5 of 7 (71%)

Number of Blocks with Breeding Evidence

Total: 1654 of 5087 (33%)

Confirmed: 40 of 5087 (1%)

Safe Dates: May 10 - July 10



©Alabama Breeding Bird Atlas
All Rights Reserved

Yellow-breasted Chat (*Icteria virens*)

Number of Priority Blocks with Breeding Evidence

Total: 575 of 585 (98%)

Confirmed: 87 (15%)

Probable: 383 (67%)

Possible: 105 (18%)

Number of Priority Blocks in Ecoregions with Breeding Evidence

Interior Plateau: 52 of 52 (100%)

Southwestern Appalachians: 124 of 124 (100%)

Ridge and Valley: 71 of 72 (99%)

Piedmont: 73 of 76 (96%)

Southeastern Plains: 251 of 254 (99%)

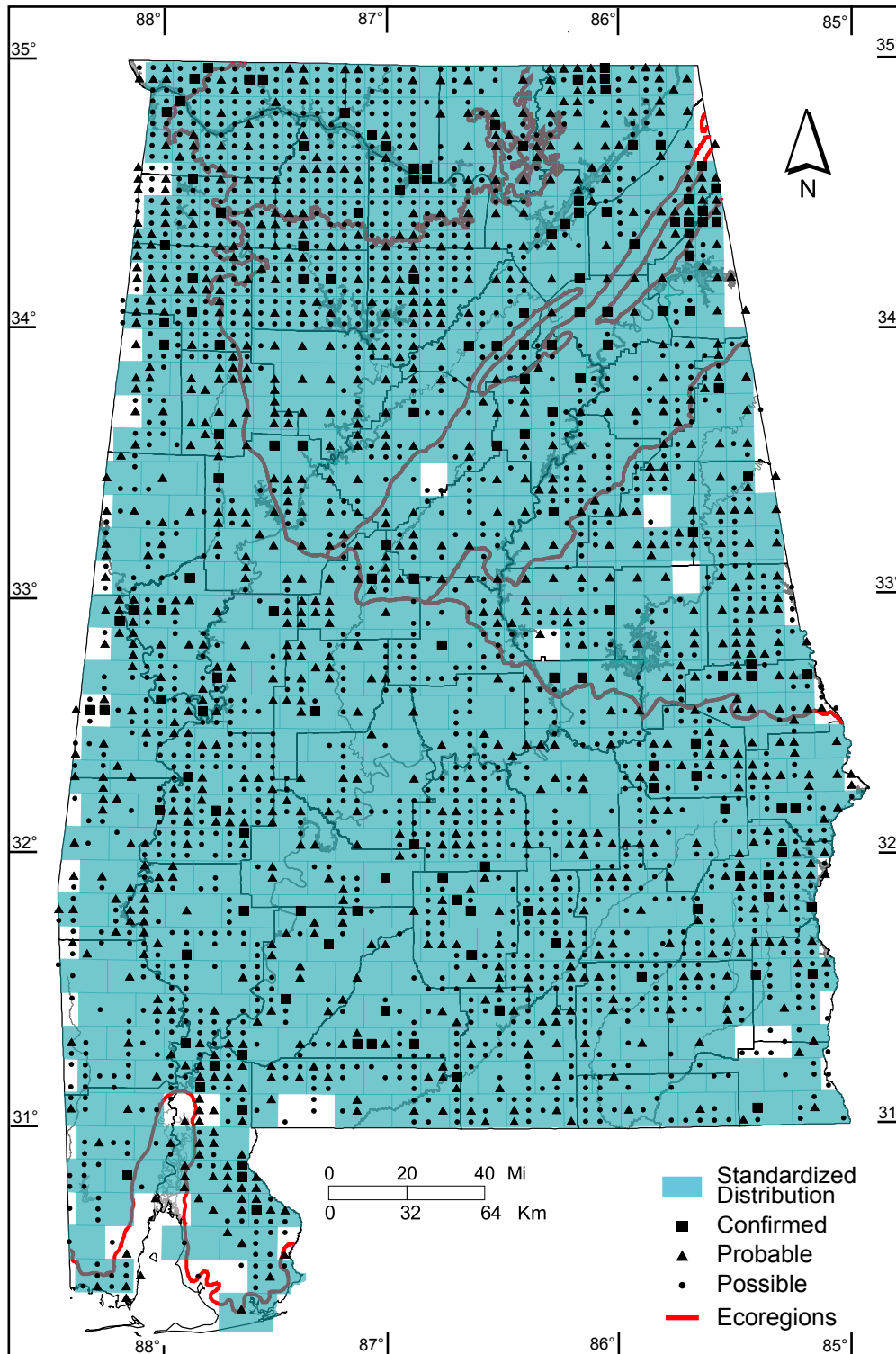
Southern Coastal Plain: 4 of 7 (57%)

Number of Blocks with Breeding Evidence

Total: 2656 of 5087 (52%)

Confirmed: 150 of 5087 (3%)

Safe Dates: May 20 - July 15



©Alabama Breeding Bird Atlas
All Rights Reserved

Summer Tanager (*Piranga rubra*)

Number of Priority Blocks with Breeding Evidence

Total: 578 of 585 (99%)

Confirmed: 74 (13%)

Probable: 299 (52%)

Possible: 205 (35%)

Number of Priority Blocks in Ecoregions with Breeding Evidence

Interior Plateau: 52 of 52 (100%)

Southwestern Appalachians: 122 of 124 (98%)

Ridge and Valley: 70 of 72 (97%)

Piedmont: 75 of 76 (99%)

Southeastern Plains: 253 of 254 (100%)

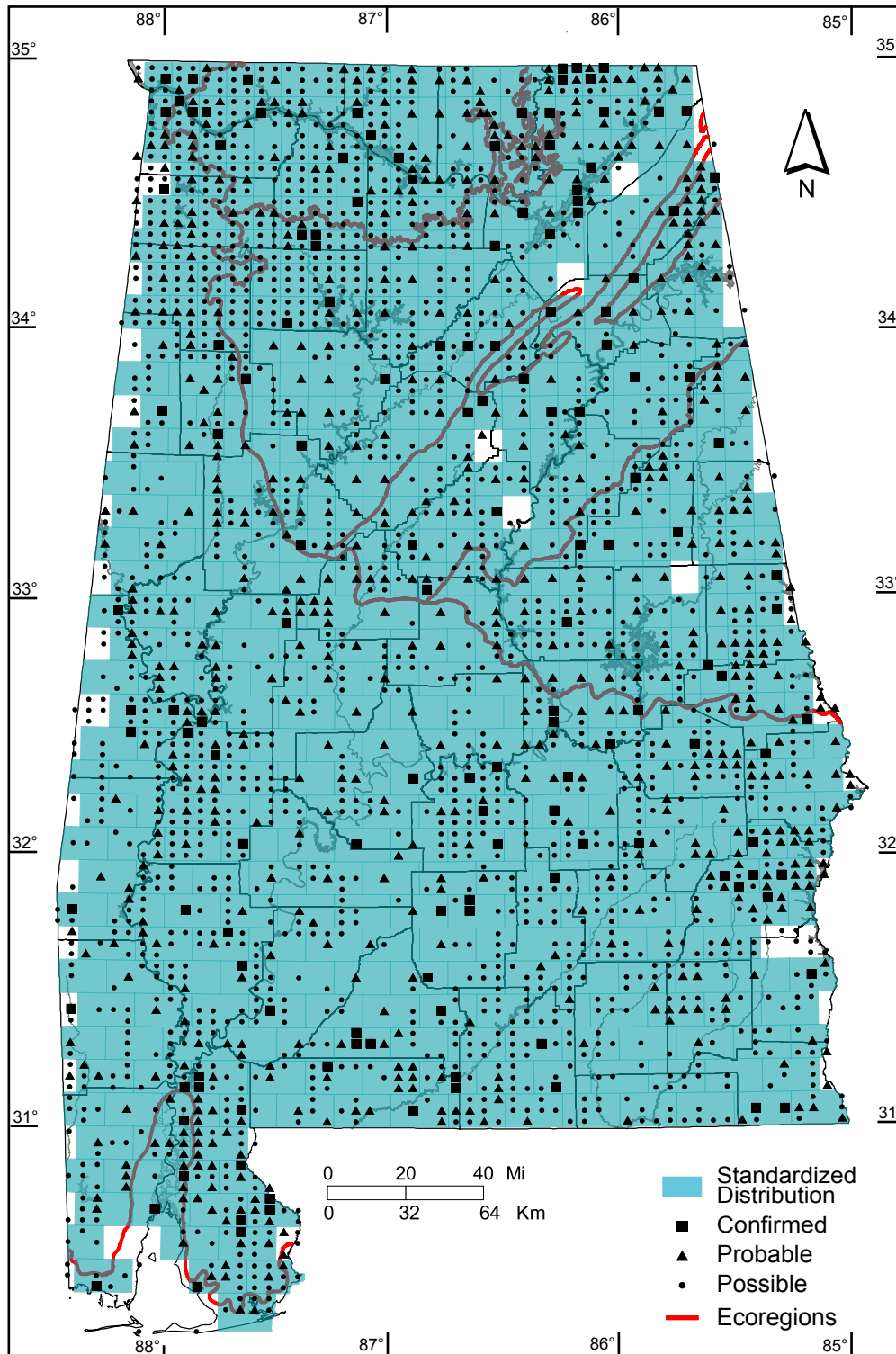
Southern Coastal Plain: 6 of 7 (86%)

Number of Blocks with Breeding Evidence

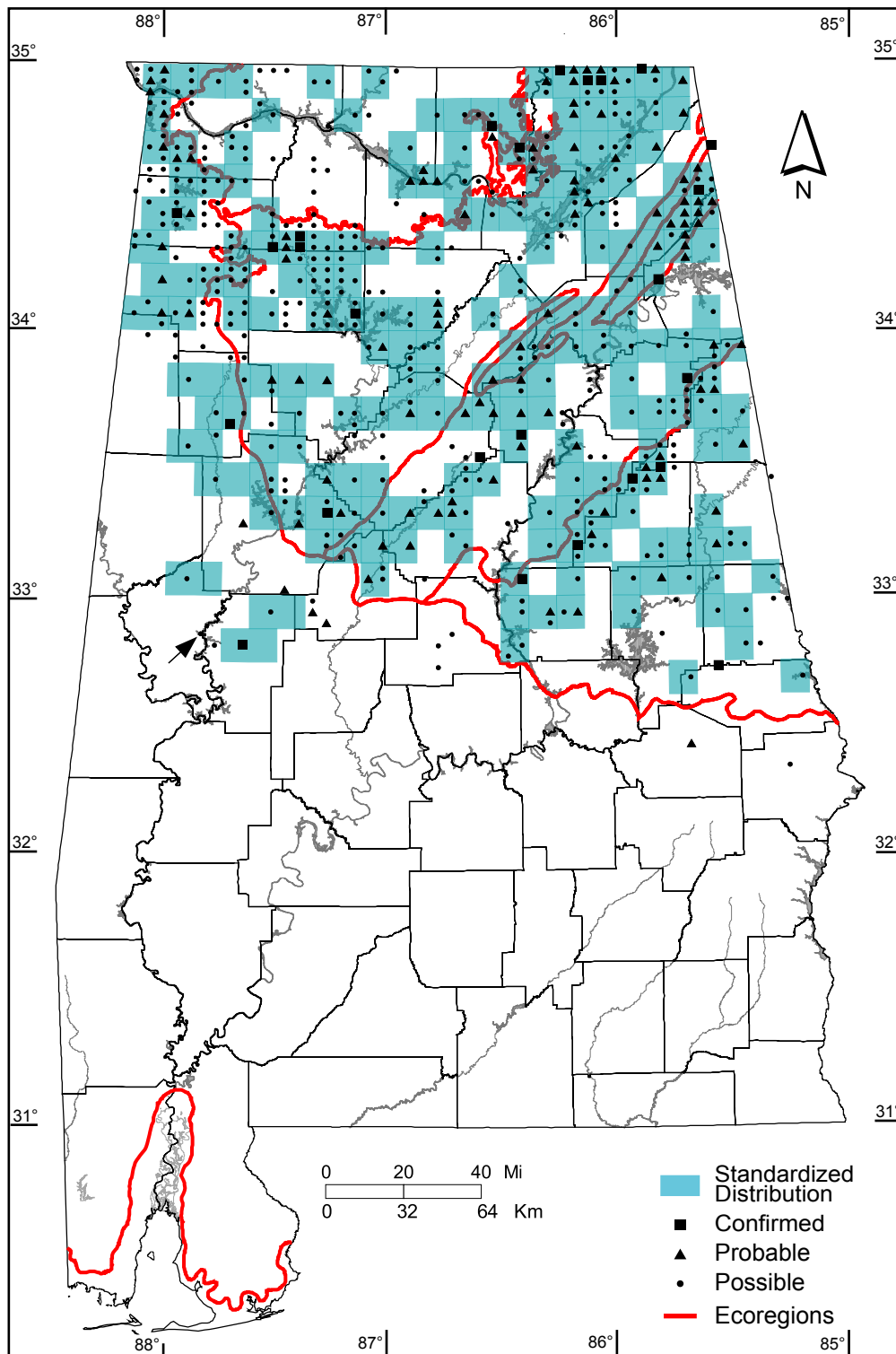
Total: 2482 of 5087 (49%)

Confirmed: 25 of 5087 (<1%)

Safe Dates: May 10 - July 15



©Alabama Breeding Bird Atlas
All Rights Reserved



Scarlet Tanager (*Piranga olivacea*)

Number of Priority Blocks with Breeding Evidence

Total: 202 of 585 (35%)

Confirmed: 12 (6%)

Probable: 55 (27%)

Possible: 135 (67%)

Number of Priority Blocks in Ecoregions with Breeding Evidence

Interior Plateau: 18 of 52 (35%)

Southwestern Appalachians: 82 of 124 (66%)

Ridge and Valley: 45 of 72 (63%)

Piedmont: 35 of 76 (46%)

Southeastern Plains: 22 of 254 (9%)

Southern Coastal Plain: 0 of 7 (0%)

Number of Blocks with Breeding Evidence

Total: 539 of 5087 (11%)

Confirmed: 25 of 5087 (<1%)

Safe Dates: May 20 - July 15



©Alabama Breeding Bird Atlas
All Rights Reserved