

Carolina Chickadee (*Poecile carolinensis*)

Number of Priority Blocks with Breeding Evidence

Total: 583 of 585 (99%)

Confirmed: 219 (38%)

Probable: 218 (37%)

Possible: 146 (25%)

Number of Priority Blocks in Ecoregions with Breeding Evidence

Interior Plateau: 52 of 52 (100%)

Southwestern Appalachians: 124 of 124 (100%)

Ridge and Valley: 72 of 72 (100%)

Piedmont: 76 of 76 (100%)

Southeastern Plains: 252 of 254 (99%)

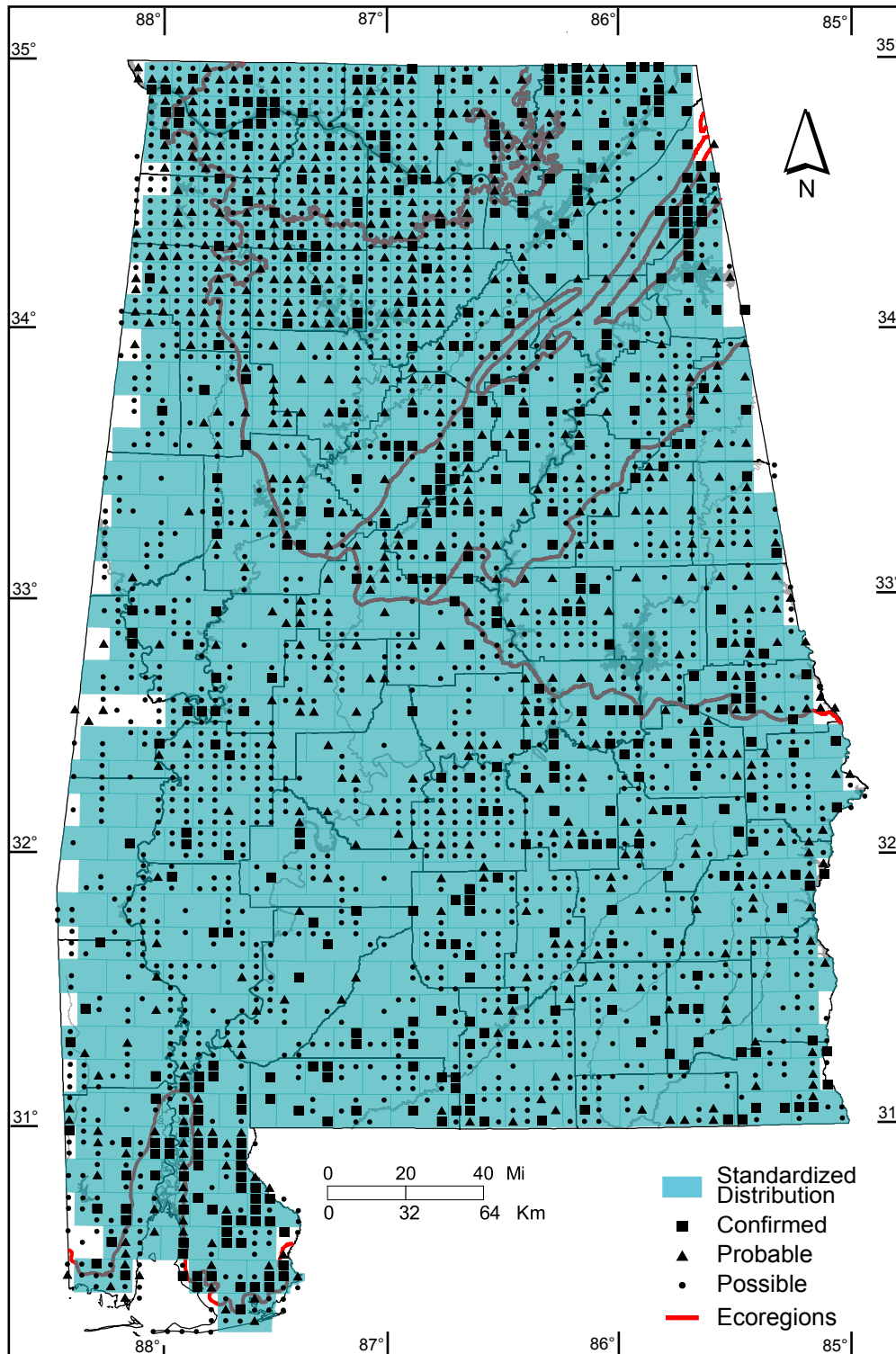
Southern Coastal Plain: 7 of 7 (100%)

Number of Blocks with Breeding Evidence

Total: 2645 of 5087 (52%)

Confirmed: 459 of 5087 (9%)

Safe Dates: April 1 - July 31



©Alabama Breeding Bird Atlas
All Rights Reserved

Tufted Titmouse (*Baeolophus bicolor*)

Number of Priority Blocks with Breeding Evidence

Total: 582 of 585 (99%)

Confirmed: 202 (35%)

Probable: 280 (48%)

Possible: 100 (17%)

Number of Priority Blocks in Ecoregions with Breeding Evidence

Interior Plateau: 52 of 52 (100%)

Southwestern Appalachians: 123 of 124 (99%)

Ridge and Valley: 71 of 72 (99%)

Piedmont: 76 of 76 (100%)

Southeastern Plains: 254 of 254 (100%)

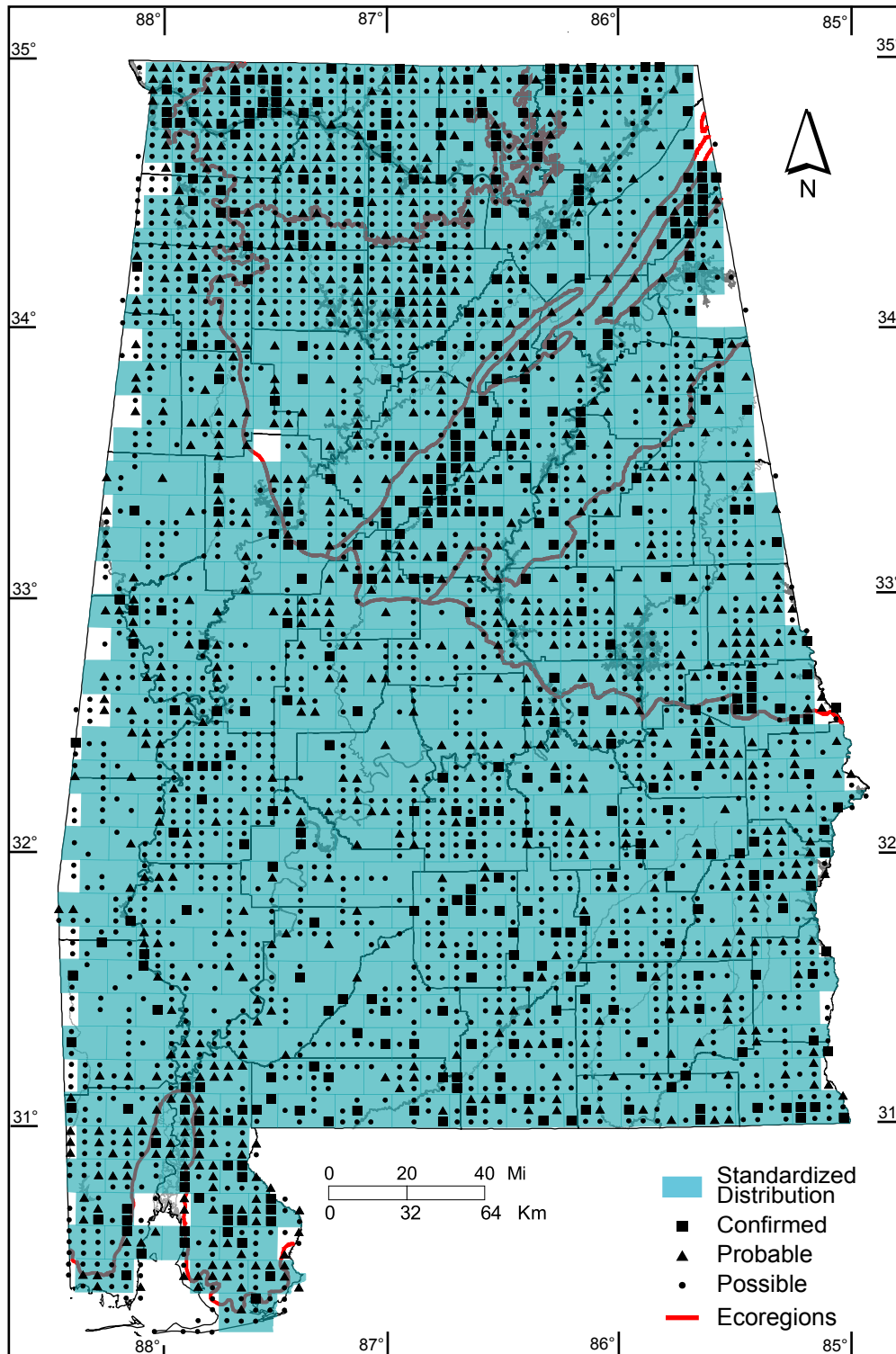
Southern Coastal Plain: 6 of 7 (86%)

Number of Blocks with Breeding Evidence

Total: 2996 of 5087 (59%)

Confirmed: 422 of 5087 (8%)

Safe Dates: March 15 - July 31



©Alabama Breeding Bird Atlas
All Rights Reserved

White-breasted Nuthatch (*Sitta carolinensis*)

Number of Priority Blocks with Breeding Evidence

Total: 237 of 585 (41%)

Confirmed: 29 (12%)

Probable: 67 (28%)

Possible: 141 (60%)

Number of Priority Blocks in Ecoregions with Breeding Evidence

Interior Plateau: 40 of 52 (77%)

Southwestern Appalachians: 92 of 124 (74%)

Ridge and Valley: 51 of 72 (71%)

Piedmont: 26 of 76 (34%)

Southeastern Plains: 28 of 254 (11%)

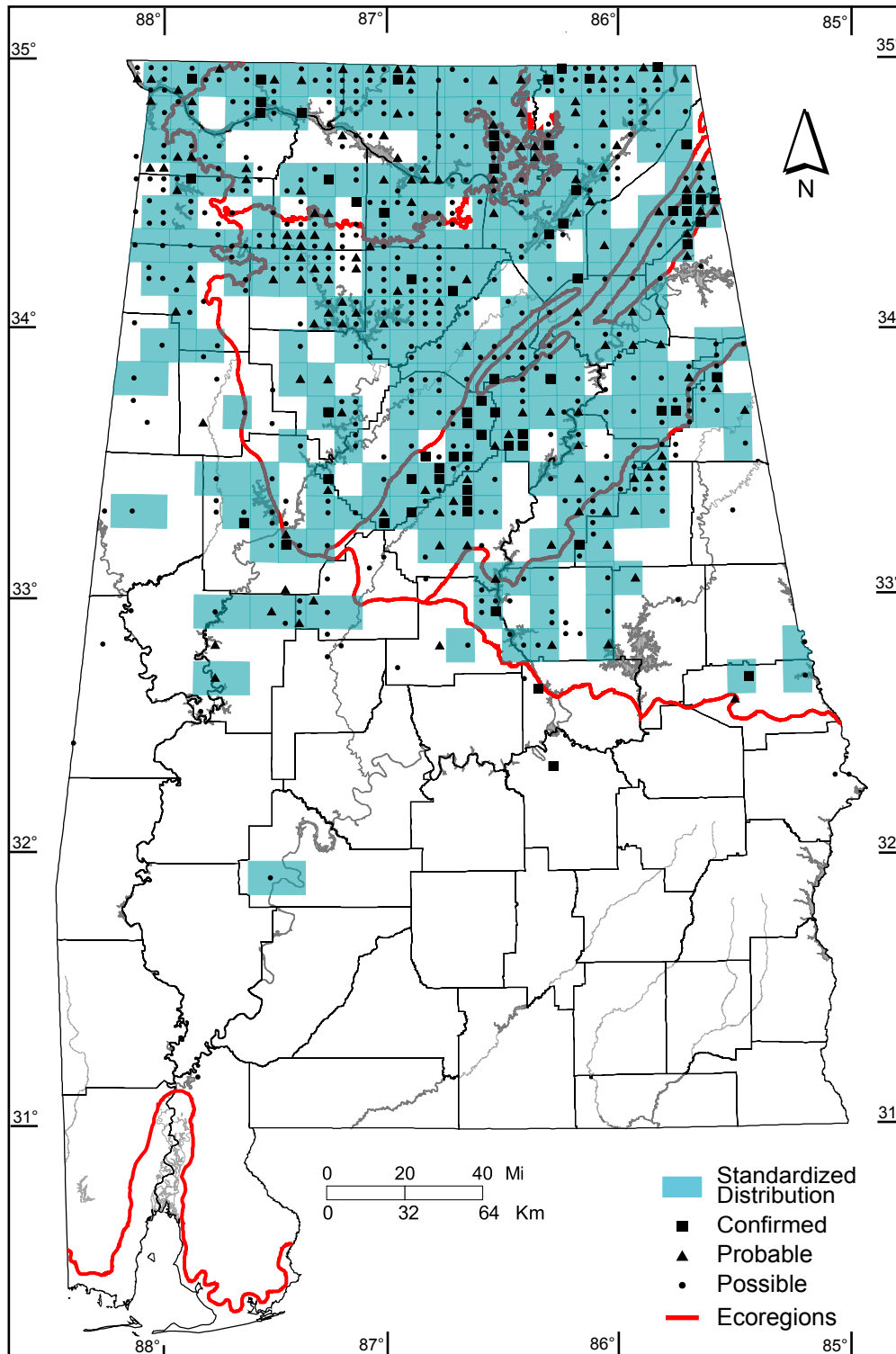
Southern Coastal Plain: 0 of 7 (0%)

Number of Blocks with Breeding Evidence

Total: 648 of 5087 (13%)

Confirmed: 65 of 5087 (1%)

Safe Dates: March 1 - June 30



©Alabama Breeding Bird Atlas
All Rights Reserved

Brown-headed Nuthatch (*Sitta pusilla*)

Number of Priority Blocks with Breeding Evidence

Total: 380 of 585 (65%)

Confirmed: 80 (21%)

Probable: 98 (26%)

Possible: 202 (53%)

Number of Priority Blocks in Ecoregions with Breeding Evidence

Interior Plateau: 6 of 52 (12%)

Southwestern Appalachians: 79 of 124 (64%)

Ridge and Valley: 59 of 72 (82%)

Piedmont: 69 of 76 (91%)

Southeastern Plains: 163 of 254 (64%)

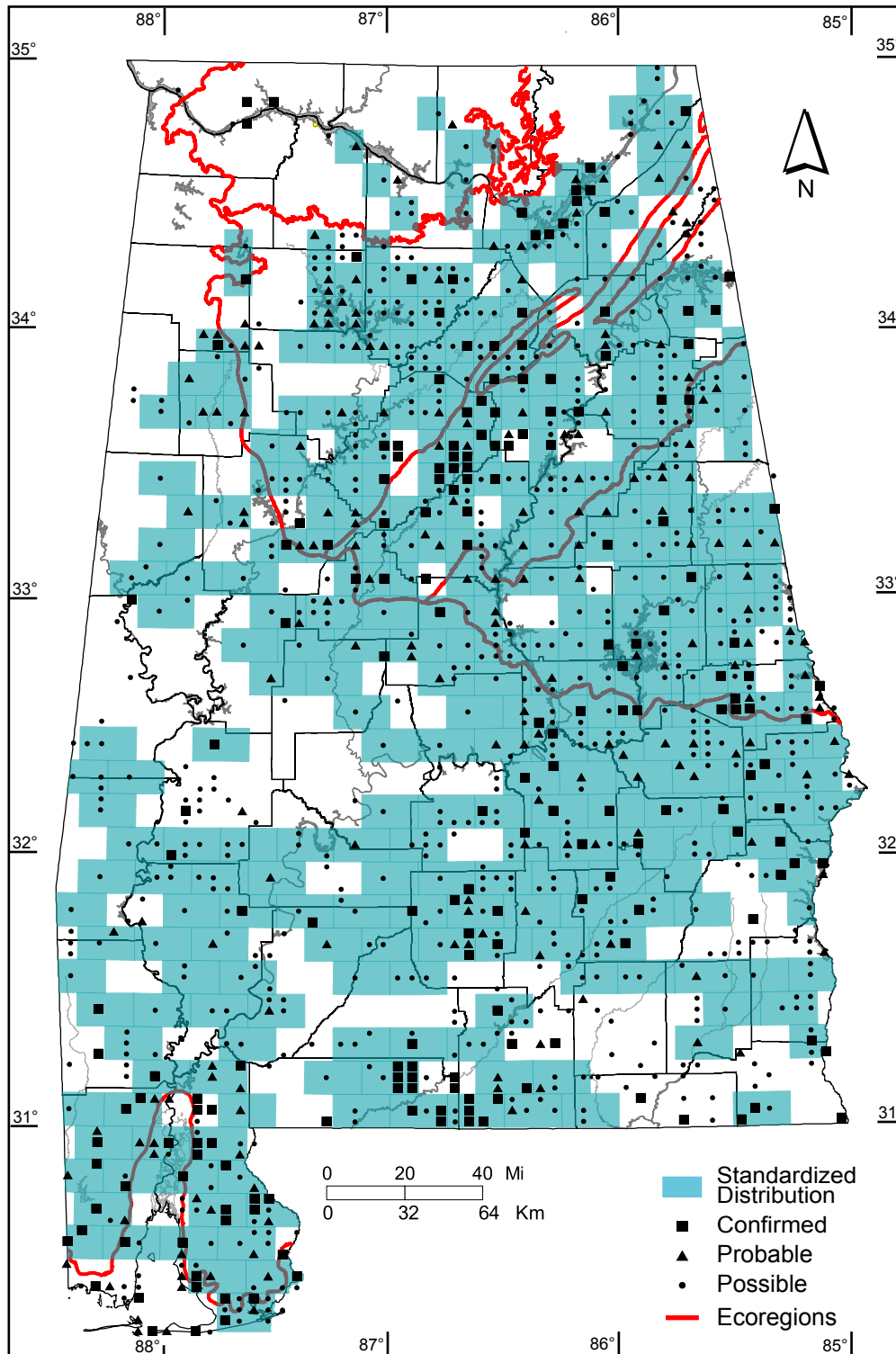
Southern Coastal Plain: 4 of 7 (57%)

Number of Blocks with Breeding Evidence

Total: 1082 of 5087 (21%)

Confirmed: 198 of 5087 (4%)

Safe Dates: February 15 - June 30



©Alabama Breeding Bird Atlas
All Rights Reserved

Carolina Wren (*Thryothorus ludovicianus*)

Number of Priority Blocks with Breeding Evidence

Total: 585 of 585 (100%)

Confirmed: 205 (35%)

Probable: 314 (54%)

Possible: 66 (11%)

Number of Priority Blocks in Ecoregions with Breeding Evidence

Interior Plateau: 52 of 52 (100%)

Southwestern Appalachians: 124 of 124 (100%)

Ridge and Valley: 72 of 72 (100%)

Piedmont: 76 of 76 (100%)

Southeastern Plains: 254 of 254 (100%)

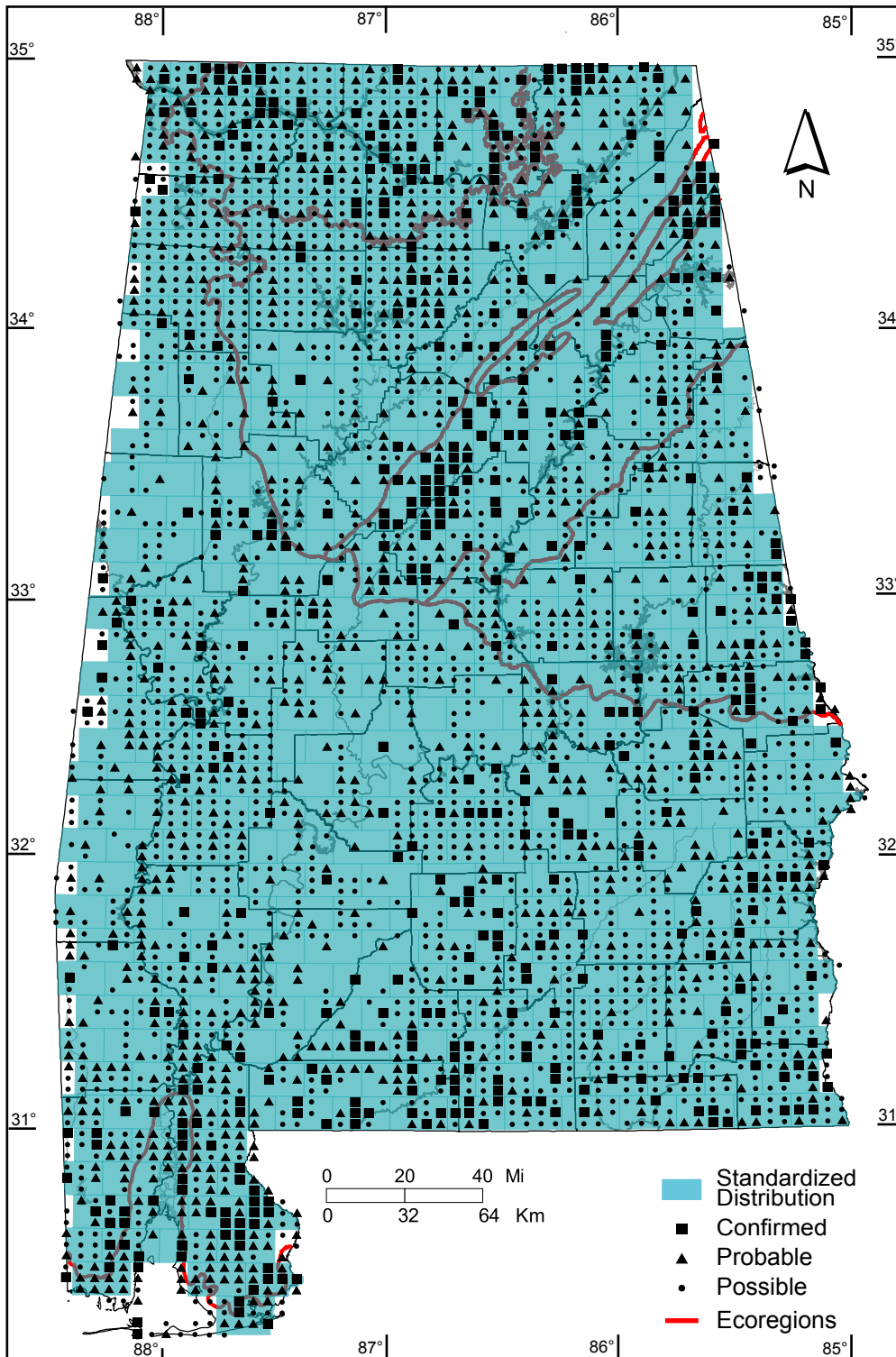
Southern Coastal Plain: 7 of 7 (100%)

Number of Blocks with Breeding Evidence

Total: 3282 of 5087 (65%)

Confirmed: 498 of 5087 (10%)

Safe Dates: March 1 - August 31



©Alabama Breeding Bird Atlas
All Rights Reserved

House Wren (*Troglodytes aedon*)

Number of Priority Blocks with Breeding Evidence

Total: 15 of 585 (3%)

Confirmed: 3 (20%)

Probable: 2 (13%)

Possible: 10 (67%)

Number of Priority Blocks in Ecoregions with Breeding Evidence

Interior Plateau: 4 of 52 (8%)

Southwestern Appalachians: 8 of 124 (6%)

Ridge and Valley: 3 of 72 (4%)

Piedmont: 0 of 76 (0%)

Southeastern Plains: 0 of 254 (0%)

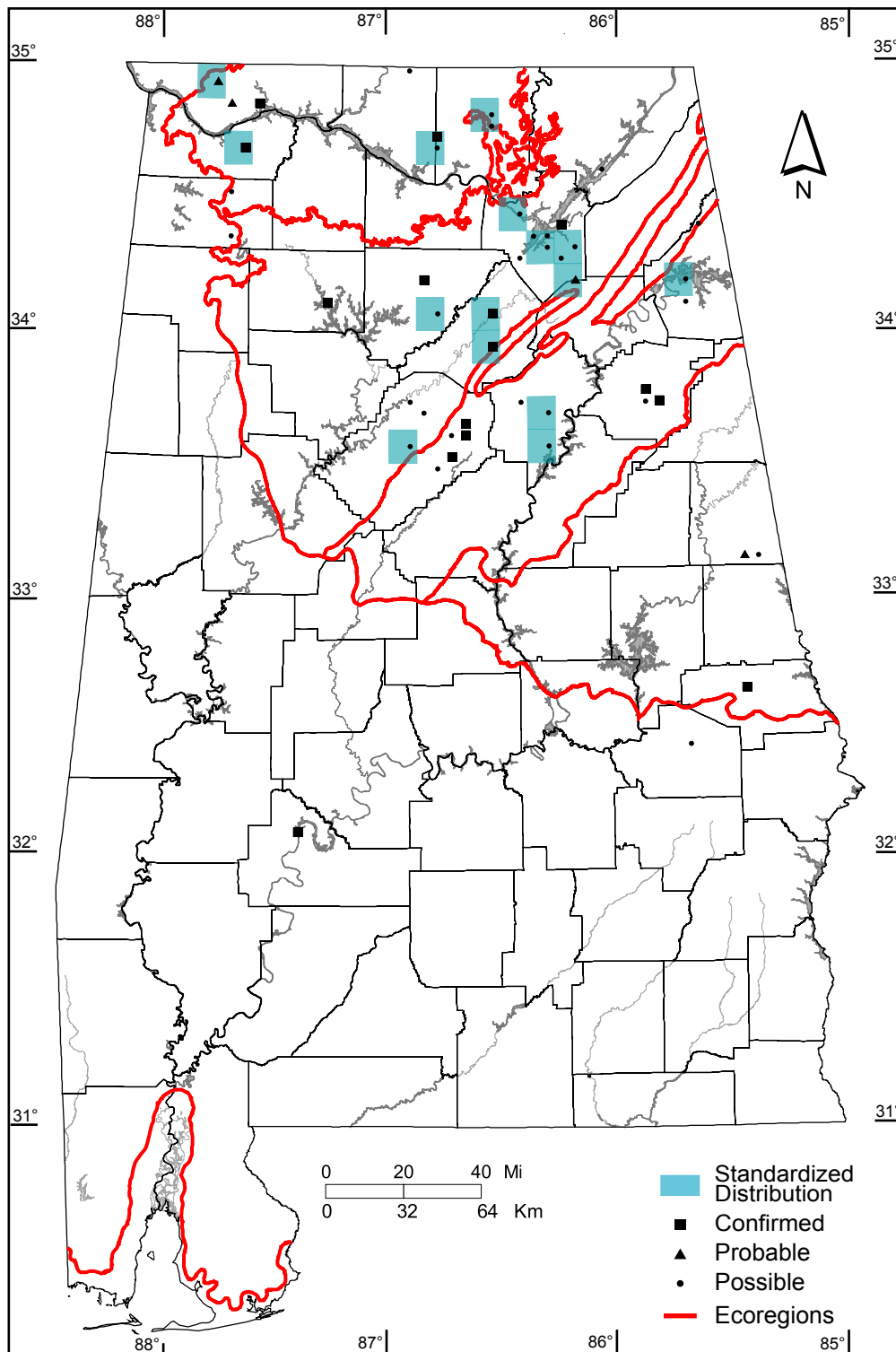
Southern Coastal Plain: 0 of 7 (0%)

Number of Blocks with Breeding Evidence

Total: 48 of 5087 (1%)

Confirmed: 15 of 5087 (<1%)

Safe Dates: May 20 - July 31



©Alabama Breeding Bird Atlas
All Rights Reserved

Marsh Wren (*Cistothorus palustris*)

Number of Priority Blocks with Breeding Evidence

Total: 1 of 585 (<1%)

Confirmed: 0 (0%)

Probable: 1 (100%)

Possible: 0 (0%)

Number of Priority Blocks in Ecoregions with Breeding Evidence

Interior Plateau: 0 of 52 (0%)

Southwestern Appalachians: 0 of 124 (0%)

Ridge and Valley: 0 of 72 (0%)

Piedmont: 0 of 76 (0%)

Southeastern Plains: 0 of 254 (0%)

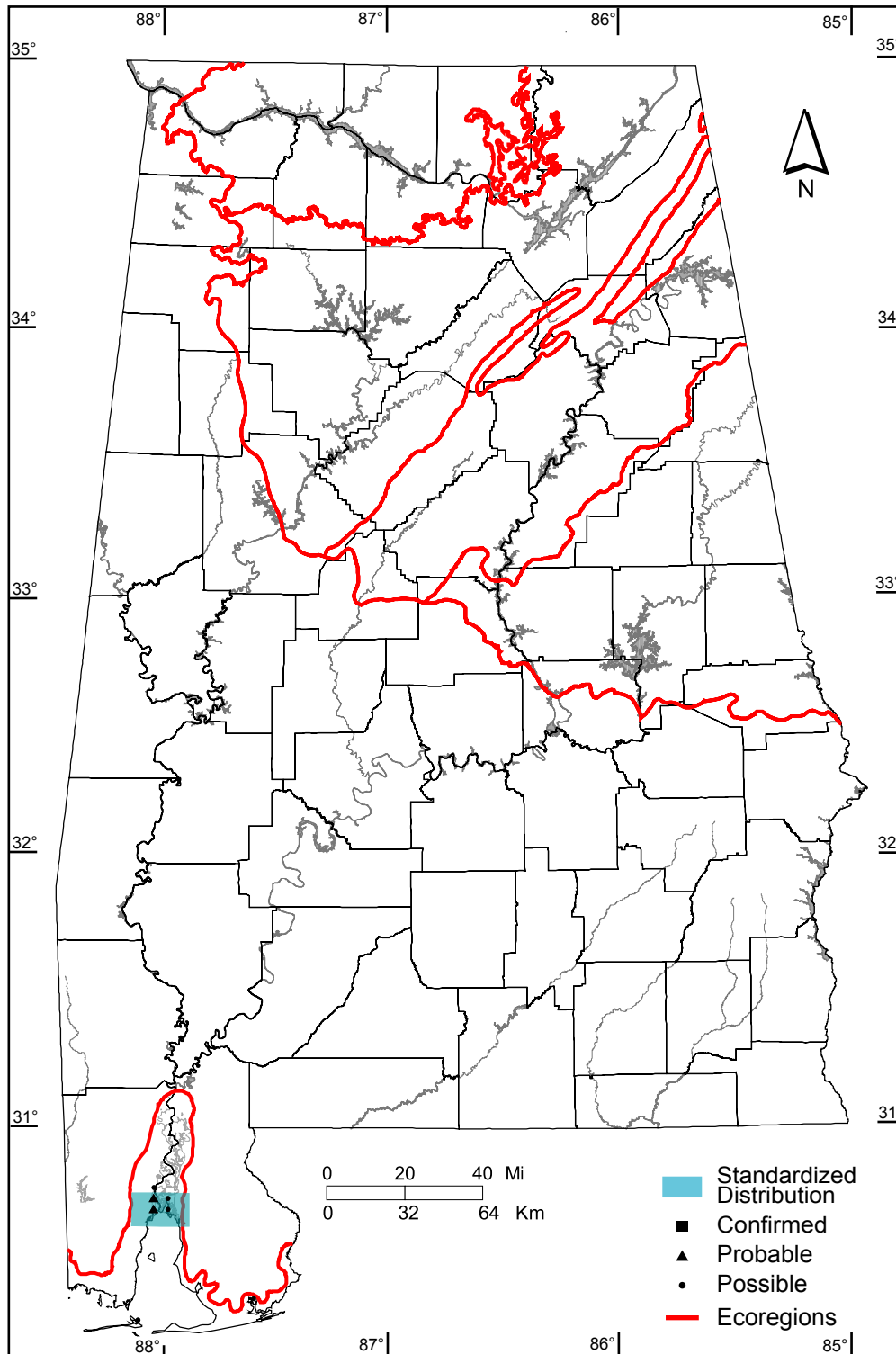
Southern Coastal Plain: 1 of 7 (14%)

Number of Blocks with Breeding Evidence

Total: 7 of 5087 (<1%)

Confirmed: 0 of 5087 (0%)

Safe Dates: May 15 - July 31



©Alabama Breeding Bird Atlas
All Rights Reserved

Blue-gray Gnatcatcher (*Polioptila caerulea*)

Number of Priority Blocks with Breeding Evidence

Total: 577 of 585 (99%)

Confirmed: 164 (29%)

Probable: 256 (44%)

Possible: 157 (27%)

Number of Priority Blocks in Ecoregions with Breeding Evidence

Interior Plateau: 51 of 52 (98%)

Southwestern Appalachians: 122 of 124 (98%)

Ridge and Valley: 72 of 72 (100%)

Piedmont: 75 of 76 (99%)

Southeastern Plains: 250 of 254 (98%)

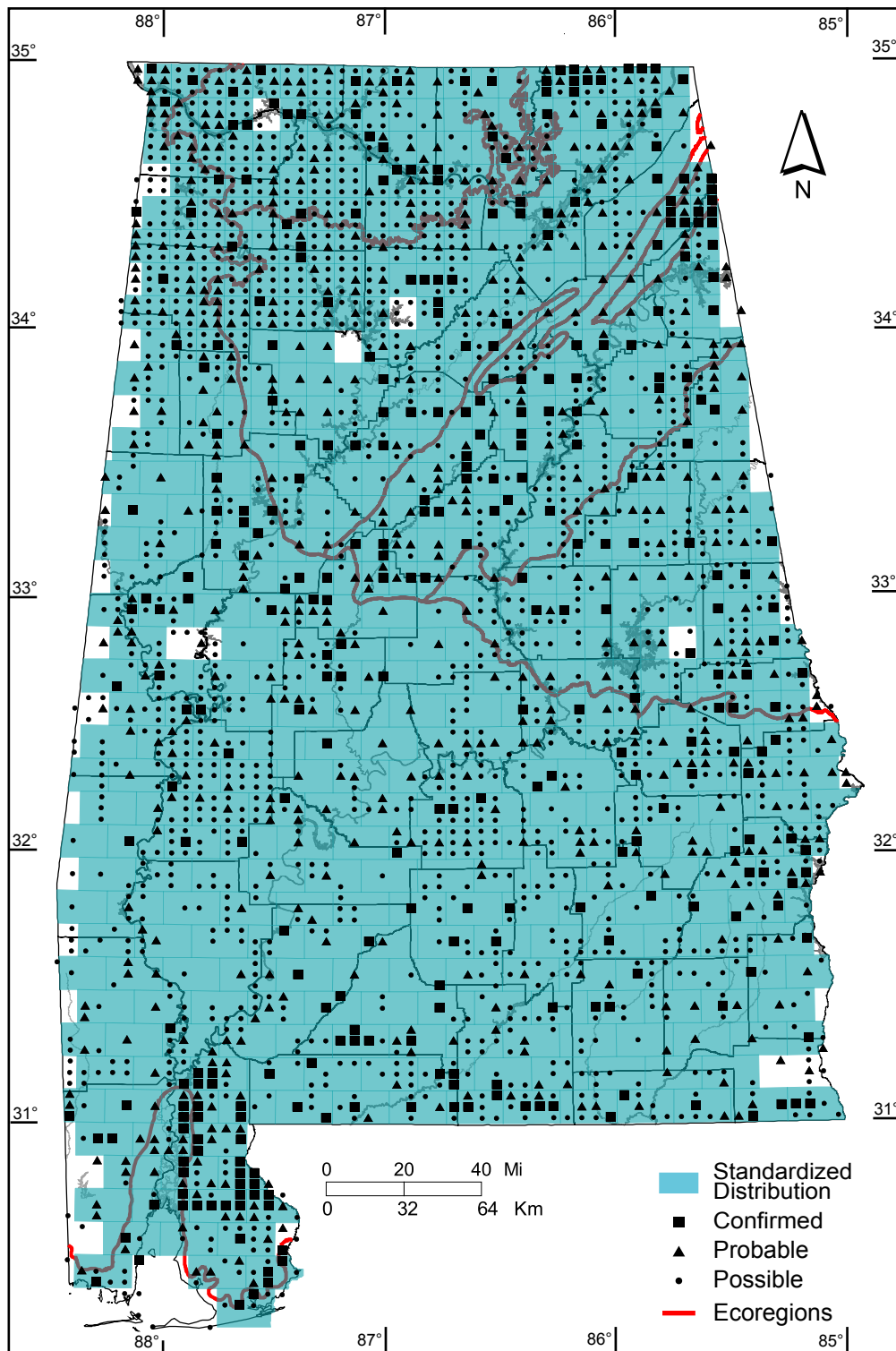
Southern Coastal Plain: 7 of 7 (100%)

Number of Blocks with Breeding Evidence

Total: 2365 of 5087 (46%)

Confirmed: 332 of 5087 (7%)

Safe Dates: May 10 - July 15



©Alabama Breeding Bird Atlas
All Rights Reserved

Eastern Bluebird (*Sialia sialis*)

Number of Priority Blocks with Breeding Evidence

Total: 574 of 585 (98%)

Confirmed: 419 (73%)

Probable: 115 (20%)

Possible: 40 (7%)

Number of Priority Blocks in Ecoregions with Breeding Evidence

Interior Plateau: 52 of 52 (100%)

Southwestern Appalachians: 122 of 124 (98%)

Ridge and Valley: 71 of 72 (99%)

Piedmont: 76 of 76 (100%)

Southeastern Plains: 247 of 254 (97%)

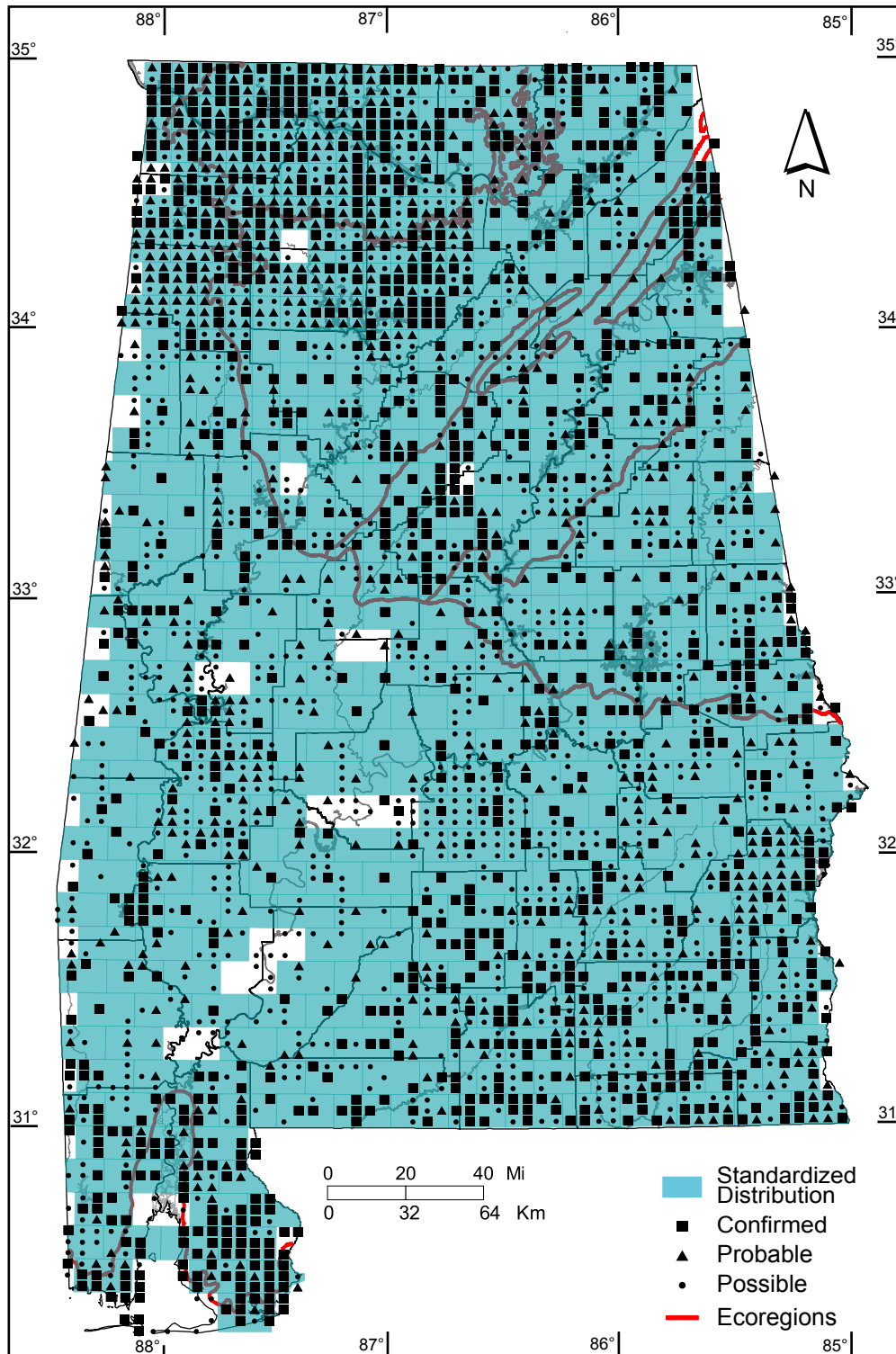
Southern Coastal Plain: 6 of 7 (86%)

Number of Blocks with Breeding Evidence

Total: 2750 of 5087 (54%)

Confirmed: 1136 of 5087 (22%)

Safe Dates: April 15 - August 15



©Alabama Breeding Bird Atlas
All Rights Reserved

Wood Thrush (*Hylocichla mustelina*)

Number of Priority Blocks with Breeding Evidence

Total: 552 of 585 (94%)

Confirmed: 16 (3%)

Probable: 261 (47%)

Possible: 275 (50%)

Number of Priority Blocks in Ecoregions with Breeding Evidence

Interior Plateau: 45 of 52 (87%)

Southwestern Appalachians: 119 of 124 (96%)

Ridge and Valley: 68 of 72 (94%)

Piedmont: 74 of 76 (97%)

Southeastern Plains: 240 of 254 (94%)

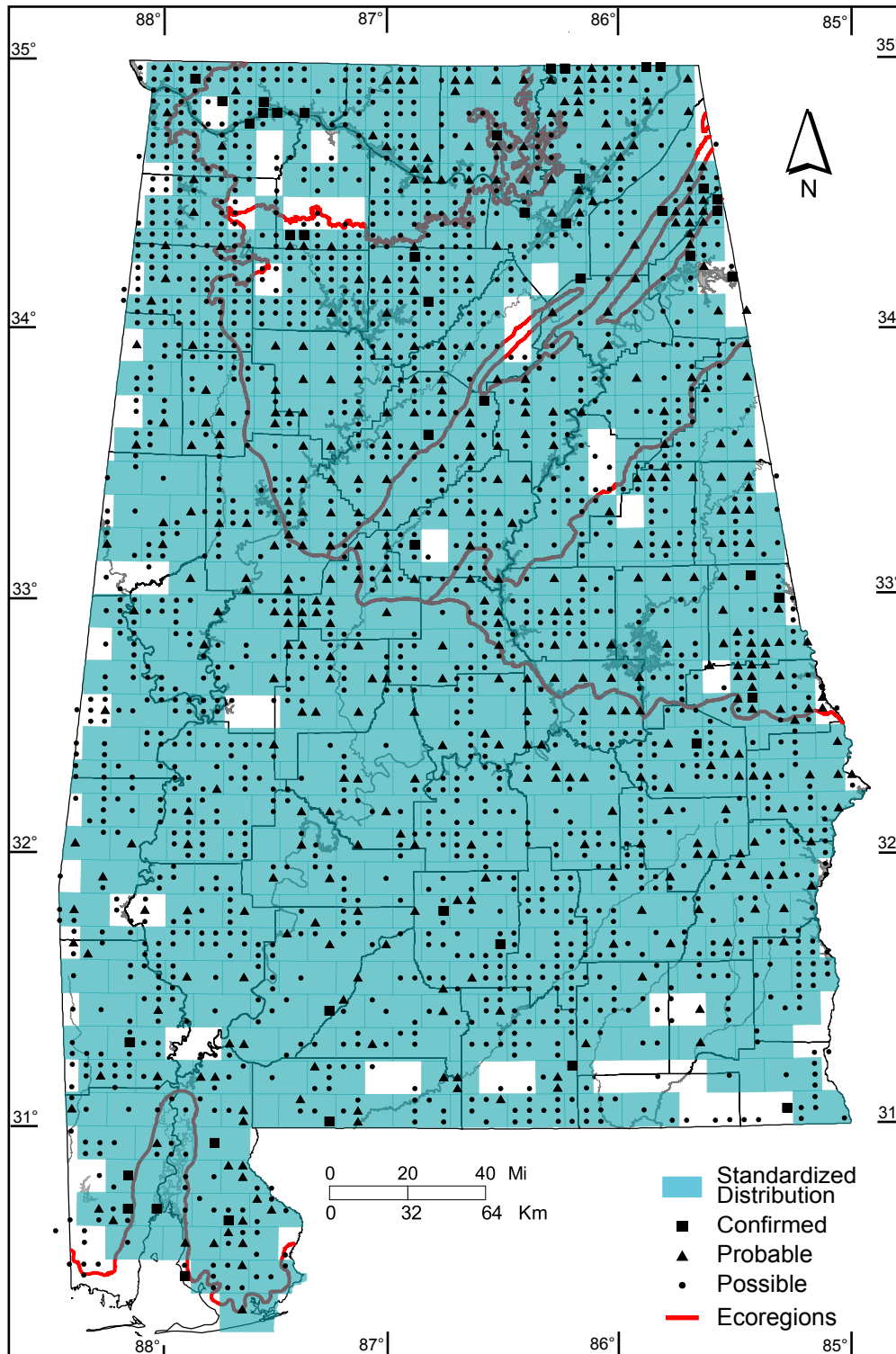
Southern Coastal Plain: 6 of 7 (86%)

Number of Blocks with Breeding Evidence

Total: 2089 of 5087 (41%)

Confirmed: 46 of 5087 (1%)

Safe Dates: May 15 - August 15



©Alabama Breeding Bird Atlas
All Rights Reserved

American Robin (*Turdus migratorius*)

Number of Priority Blocks with Breeding Evidence

Total: 410 of 585 (70%)

Confirmed: 174 (42%)

Probable: 118 (29%)

Possible: 118 (29%)

Number of Priority Blocks in Ecoregions with Breeding Evidence

Interior Plateau: 52 of 52 (100%)

Southwestern Appalachians: 120 of 124 (97%)

Ridge and Valley: 71 of 72 (99%)

Piedmont: 70 of 76 (92%)

Southeastern Plains: 96 of 254 (38%)

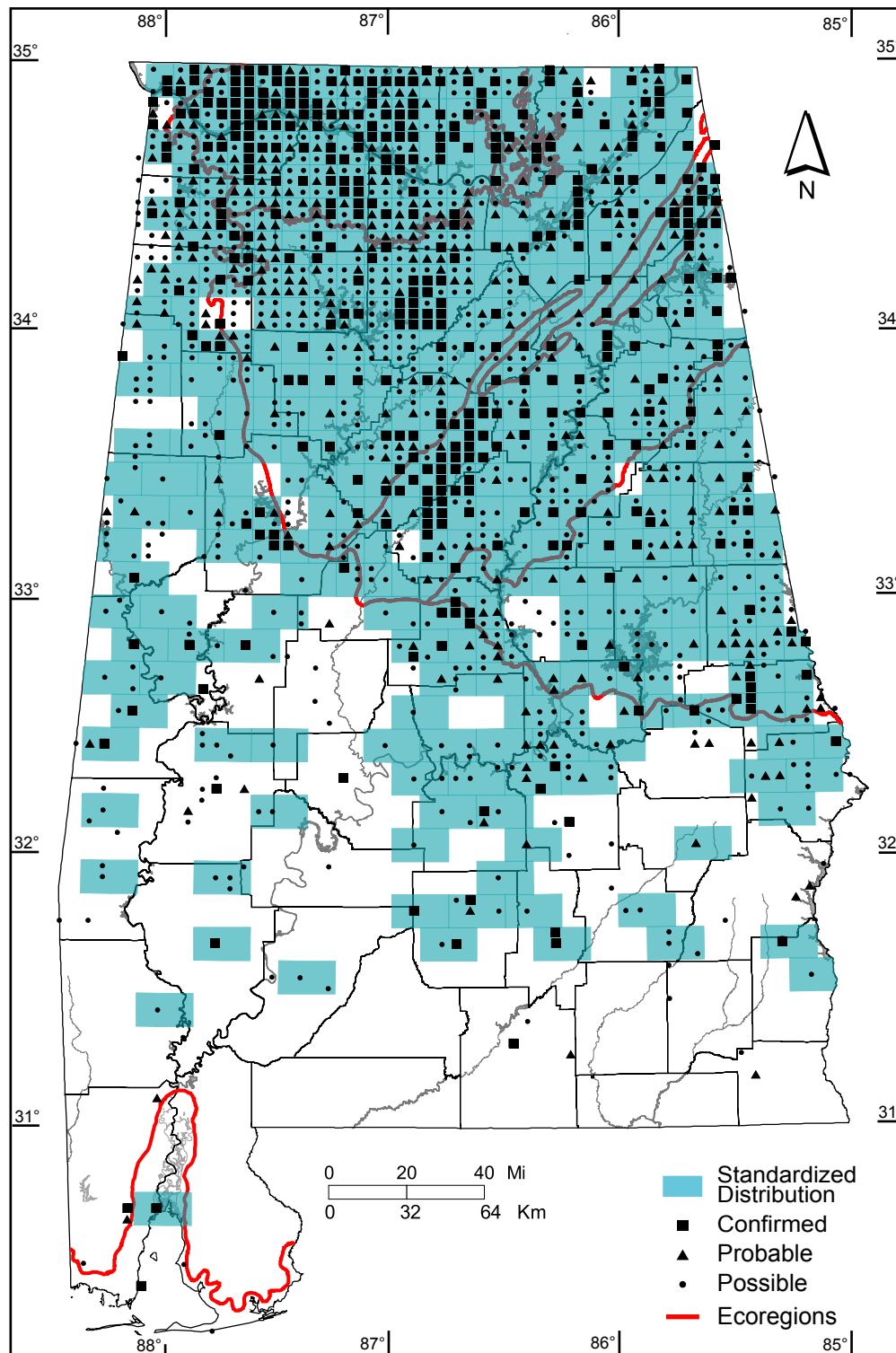
Southern Coastal Plain: 1 of 7 (14%)

Number of Blocks with Breeding Evidence

Total: 1435 of 5087 (28%)

Confirmed: 398 of 5087 (8%)

Safe Dates: May 1 - August 15



©Alabama Breeding Bird Atlas
All Rights Reserved

Gray Catbird (*Dumetella carolinensis*)

Number of Priority Blocks with Breeding Evidence

Total: 348 of 585 (59%)

Confirmed: 39 (11%)

Probable: 73 (21%)

Possible: 236 (68%)

Number of Priority Blocks in Ecoregions with Breeding Evidence

Interior Plateau: 21 of 52 (40%)

Southwestern Appalachians: 83 of 124 (67%)

Ridge and Valley: 45 of 72 (63%)

Piedmont: 58 of 76 (76%)

Southeastern Plains: 140 of 254 (55%)

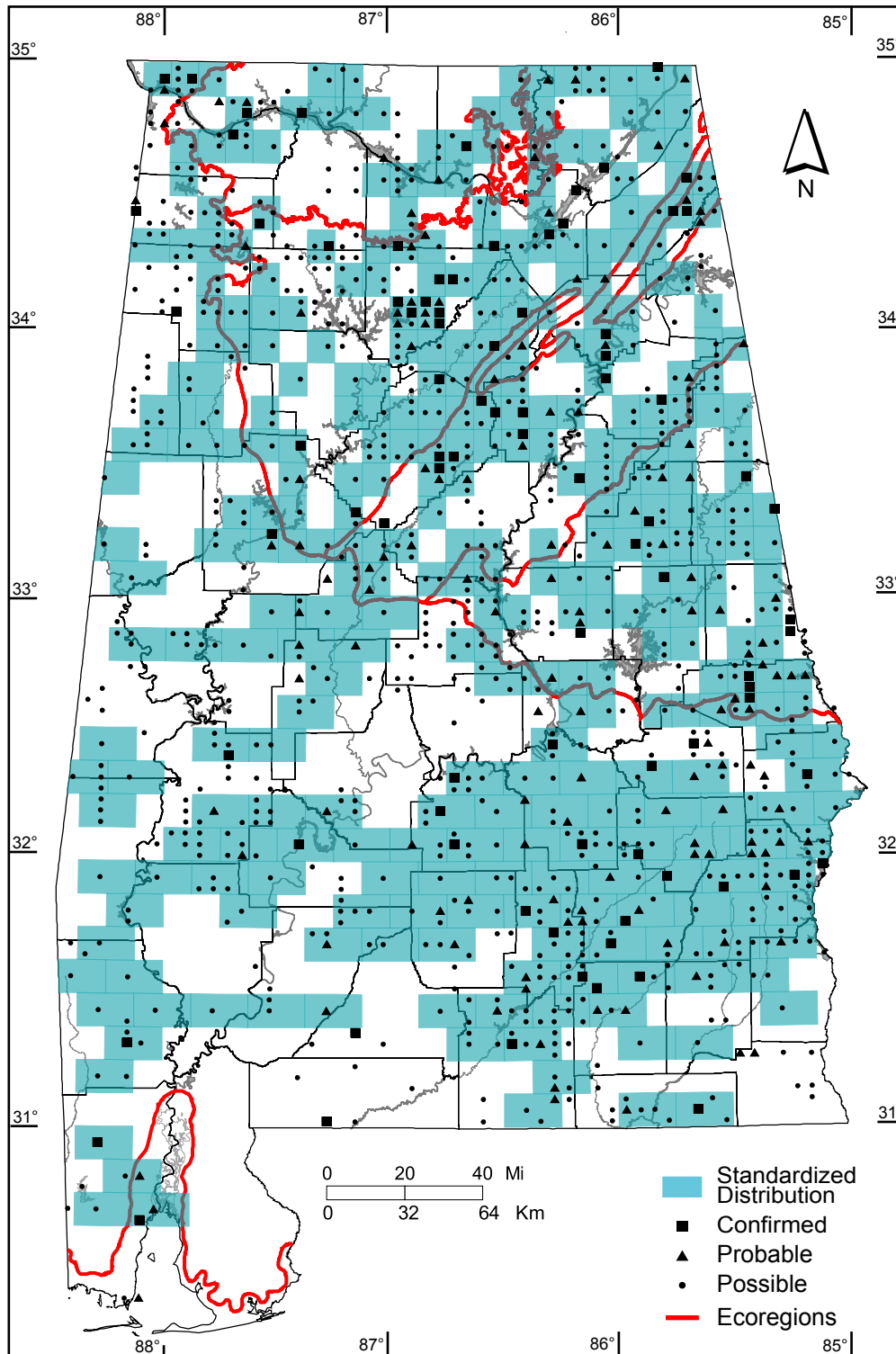
Southern Coastal Plain: 1 of 7 (14%)

Number of Blocks with Breeding Evidence

Total: 1012 of 5087 (20%)

Confirmed: 86 of 5087 (2%)

Safe Dates: May 15 - July 5



©Alabama Breeding Bird Atlas
All Rights Reserved

Northern Mockingbird (*Mimus polyglottos*)

Number of Priority Blocks with Breeding Evidence

Total: 572 of 585 (98%)

Confirmed: 297 (52%)

Probable: 221 (39%)

Possible: 54 (9%)

Number of Priority Blocks in Ecoregions with Breeding Evidence

Interior Plateau: 52 of 52 (100%)

Southwestern Appalachians: 122 of 124 (98%)

Ridge and Valley: 72 of 72 (100%)

Piedmont: 72 of 76 (95%)

Southeastern Plains: 247 of 254 (97%)

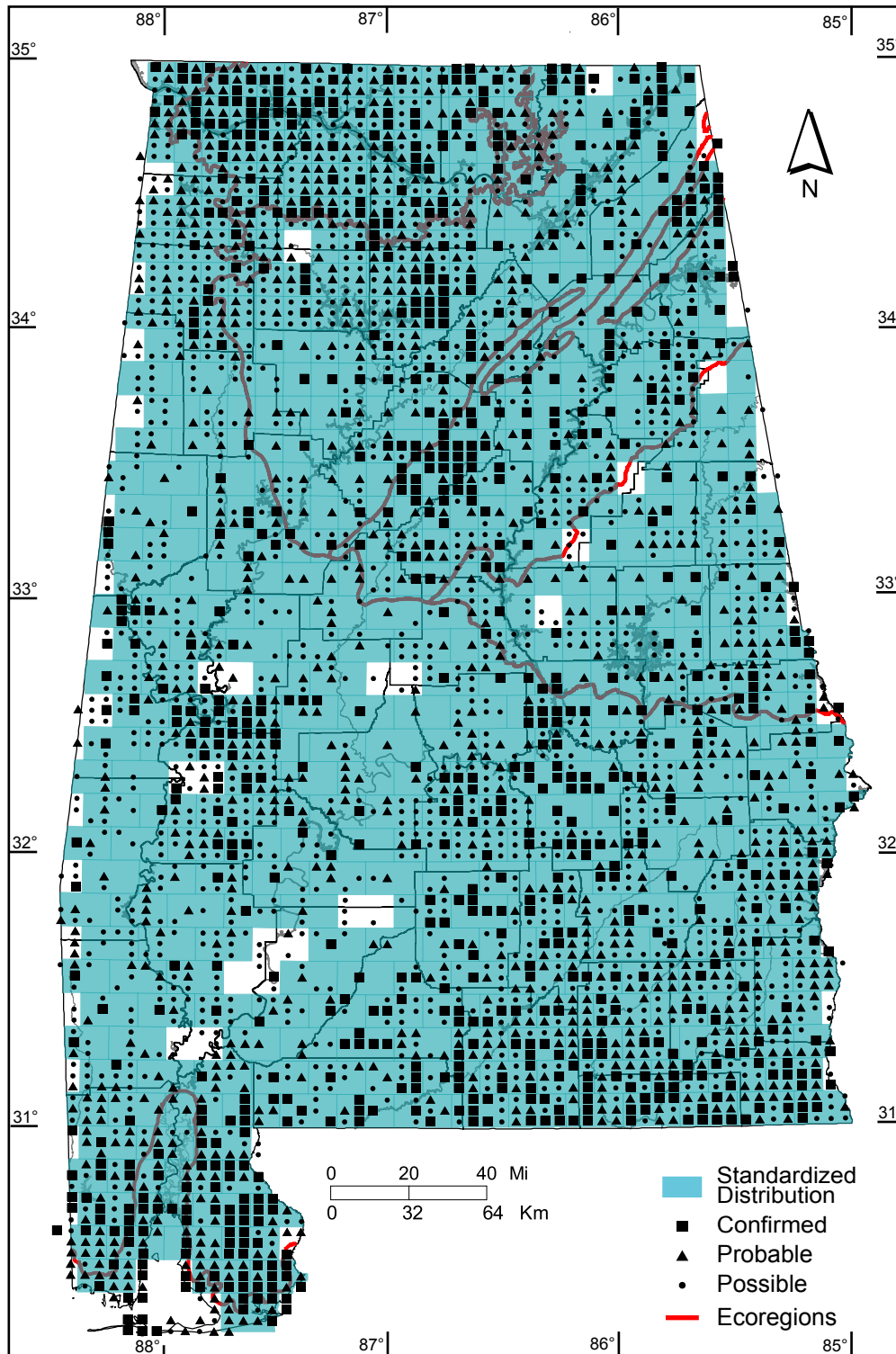
Southern Coastal Plain: 7 of 7 (100%)

Number of Blocks with Breeding Evidence

Total: 3138 of 5087 (62%)

Confirmed: 818 of 5087 (16%)

Safe Dates: March 1 - July 15



©Alabama Breeding Bird Atlas
All Rights Reserved

Brown Thrasher (*Toxostoma rufum*)

Number of Priority Blocks with Breeding Evidence

Total: 573 of 585 (98%)

Confirmed: 198 (35%)

Probable: 201 (35%)

Possible: 174 (30%)

Number of Priority Blocks in Ecoregions with Breeding Evidence

Interior Plateau: 52 of 52 (100%)

Southwestern Appalachians: 123 of 124 (99%)

Ridge and Valley: 72 of 72 (100%)

Piedmont: 76 of 76 (100%)

Southeastern Plains: 243 of 254 (96%)

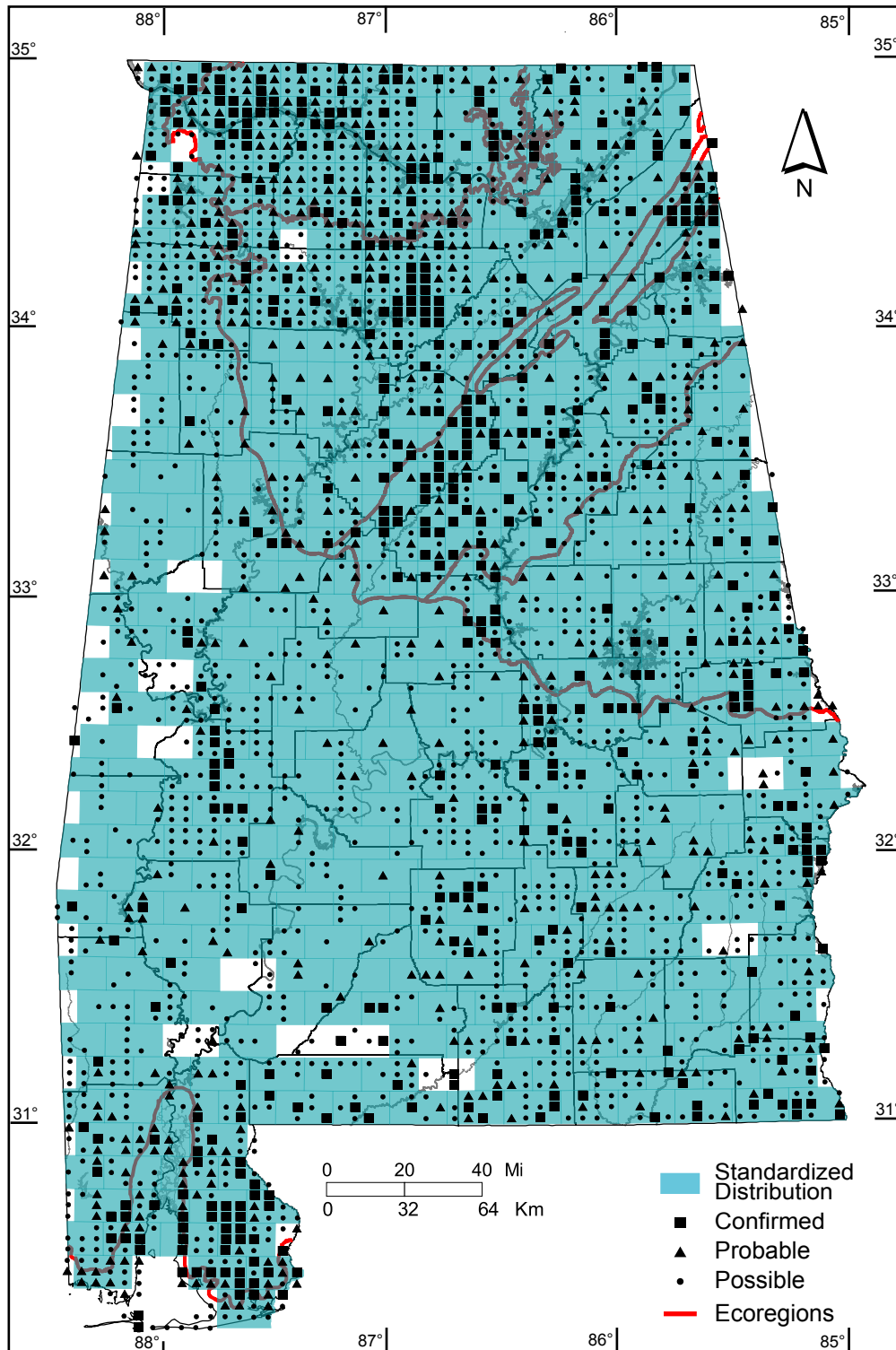
Southern Coastal Plain: 7 of 7 (86%)

Number of Blocks with Breeding Evidence

Total: 2470 of 5087 (49%)

Confirmed: 522 of 5087 (10%)

Safe Dates: April 10 - July 31



©Alabama Breeding Bird Atlas
All Rights Reserved

European Starling (*Sturnus vulgaris*)

Number of Priority Blocks with Breeding Evidence

Total: 451 of 585 (77%)

Confirmed: 265 (59%)

Probable: 67 (15%)

Possible: 119 (26%)

Number of Priority Blocks in Ecoregions with Breeding Evidence

Interior Plateau: 52 of 52 (100%)

Southwestern Appalachians: 114 of 124 (92%)

Ridge and Valley: 64 of 72 (89%)

Piedmont: 55 of 76 (72%)

Southeastern Plains: 160 of 254 (63%)

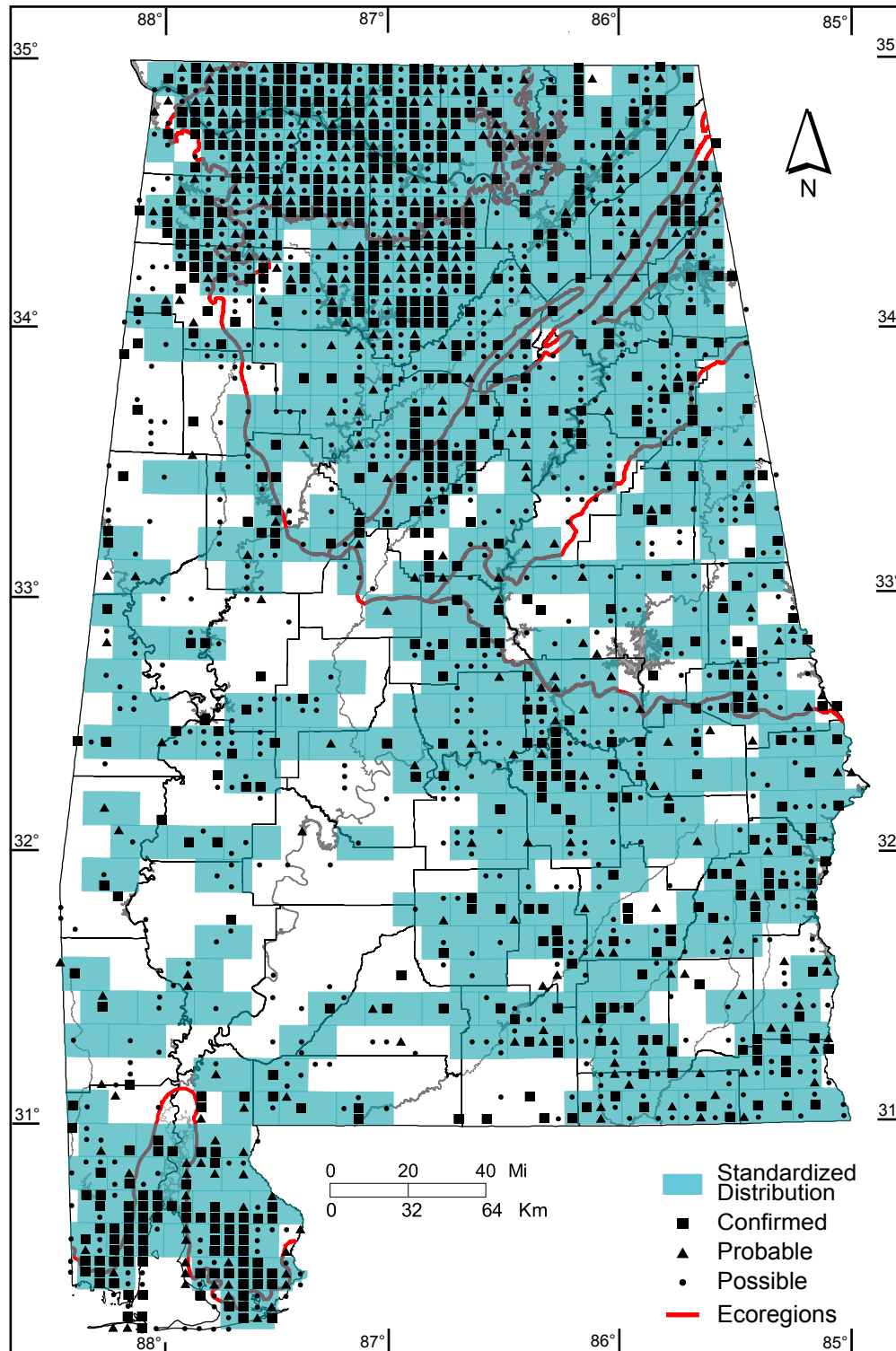
Southern Coastal Plain: 6 of 7 (86%)

Number of Blocks with Breeding Evidence

Total: 1772 of 5087 (35%)

Confirmed: 725 of 5087 (14%)

Safe Dates: April 1 - August 15



©Alabama Breeding Bird Atlas
All Rights Reserved

Cedar Waxwing (*Bombycilla cedrorum*)

Number of Priority Blocks with Breeding Evidence

Total: 31 of 585 (5%)

Confirmed: 7 (23%)

Probable: 9 (29%)

Possible: 15 (48%)

Number of Priority Blocks in Ecoregions with Breeding Evidence

Interior Plateau: 14 of 52 (27%)

Southwestern Appalachians: 8 of 124 (6%)

Ridge and Valley: 3 of 72 (4%)

Piedmont: 2 of 76 (3%)

Southeastern Plains: 4 of 254 (2%)

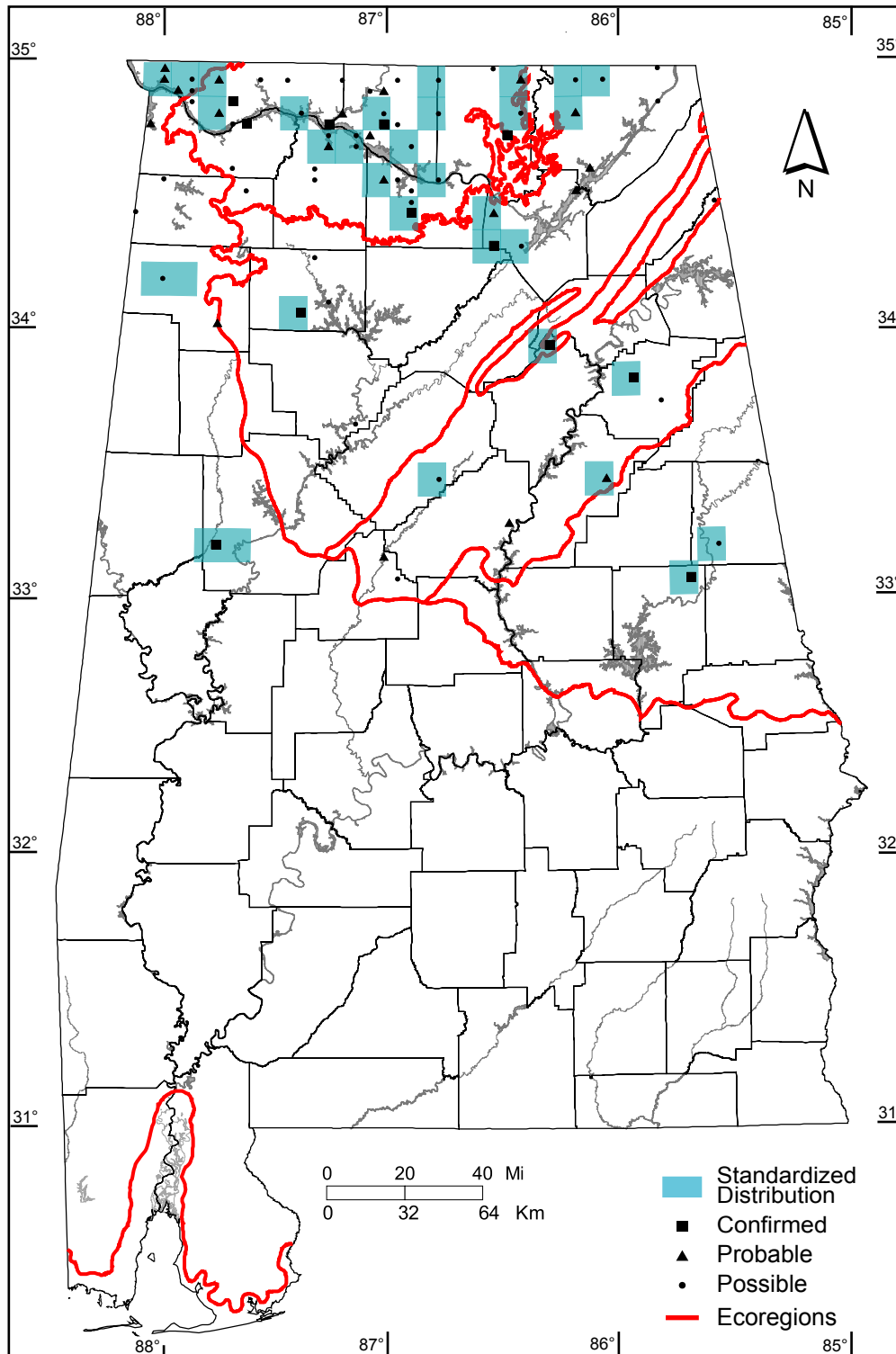
Southern Coastal Plain: 0 of 7 (0%)

Number of Blocks with Breeding Evidence

Total: 76 of 5087 (1%)

Confirmed: 12 of 5087 (<1%)

Safe Dates: June 10 - July 15



©Alabama Breeding Bird Atlas
All Rights Reserved