

Eastern Wood-Pewee (*Contopus virens*)

Number of Priority Blocks with Breeding Evidence

Total: 492 of 585 (84%)

Confirmed: 26 (5%)

Probable: 155 (32%)

Possible: 311 (63%)

Number of Priority Blocks in Ecoregions with Breeding Evidence

Interior Plateau: 51 of 52 (98%)

Southwestern Appalachians: 112 of 124 (90%)

Ridge and Valley: 50 of 72 (69%)

Piedmont: 67 of 76 (88%)

Southeastern Plains: 210 of 254 (83%)

Southern Coastal Plain: 2 of 7 (29%)

Number of Blocks with Breeding Evidence

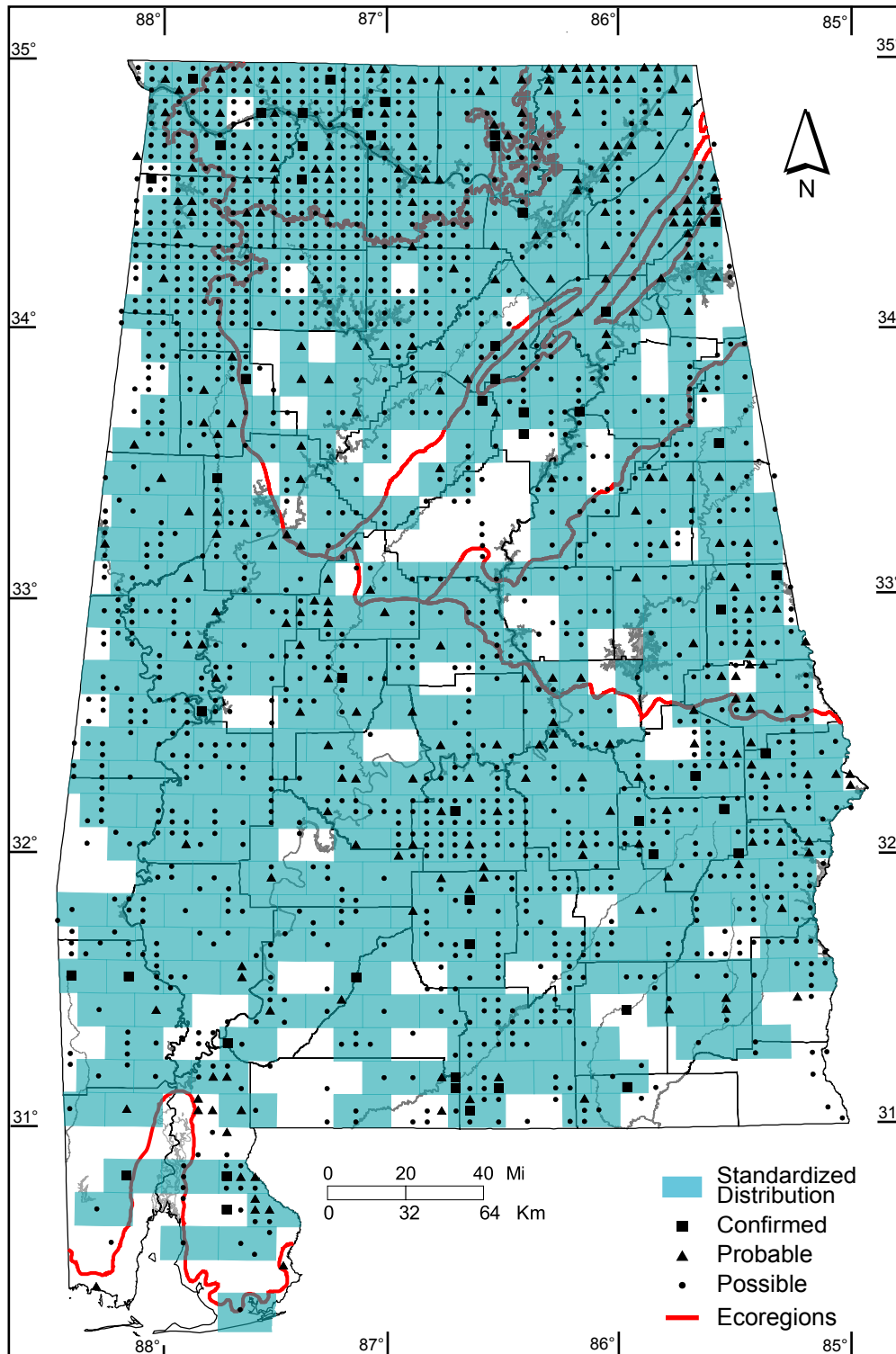
Total: 1771 of 5087 (35%)

Confirmed: 52 of 5087 (1%)

Number of Blocks with Nonbreeding Records

Observed: 0 of 5087 (0%)

Safe Dates: May 20 - July 15



©Alabama Breeding Bird Atlas
All Rights Reserved

Acadian Flycatcher (*Empidonax virescens*)

Number of Priority Blocks with Breeding Evidence

Total: 425 of 585 (73%)

Confirmed: 13 (3%)

Probable: 133 (31%)

Possible: 279 (66%)

Number of Priority Blocks in Ecoregions with Breeding Evidence

Interior Plateau: 30 of 52 (58%)

Southwestern Appalachians: 83 of 124 (67%)

Ridge and Valley: 46 of 72 (64%)

Piedmont: 66 of 76 (87%)

Southeastern Plains: 197 of 254 (78%)

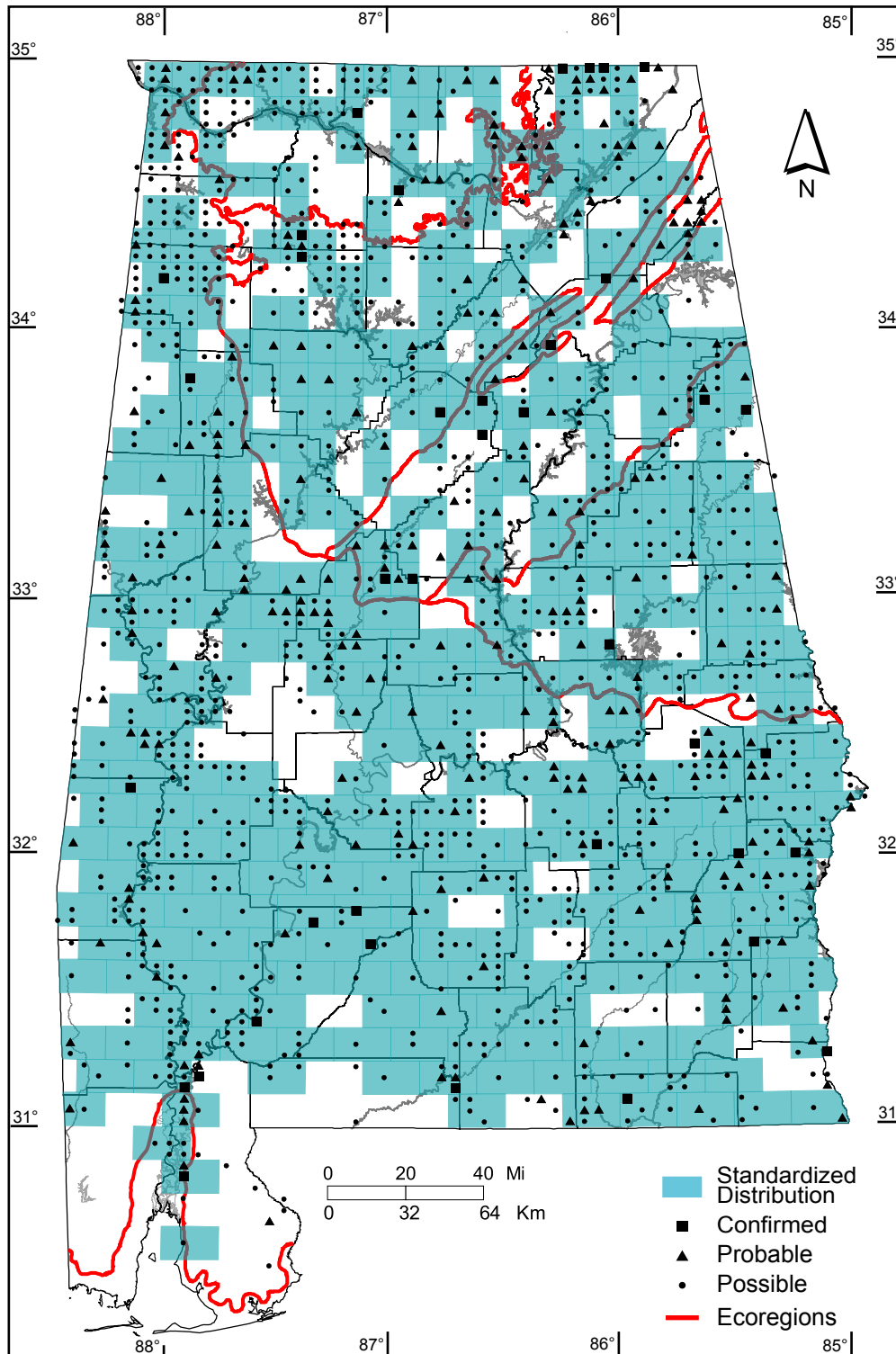
Southern Coastal Plain: 3 of 7 (43%)

Number of Blocks with Breeding Evidence

Total: 1380 of 5087 (27%)

Confirmed: 38 of 5087 (1%)

Safe Dates: May 20 - July 15



©Alabama Breeding Bird Atlas
All Rights Reserved

Willow Flycatcher (Empidonax traillii)

Number of Priority Blocks with Breeding Evidence

Total: 1 of 585 (<1%)

Confirmed: 0 (0%)

Probable: 1 (100%)

Possible: 0 (0%)

Number of Priority Blocks in Ecoregions with Breeding Evidence

Interior Plateau: 0 of 52 (0%)

Southwestern Appalachians: 0 of 124 (0%)

Ridge and Valley: 1 of 72 (1%)

Piedmont: 0 of 76 (0%)

Southeastern Plains: 0 of 254 (0%)

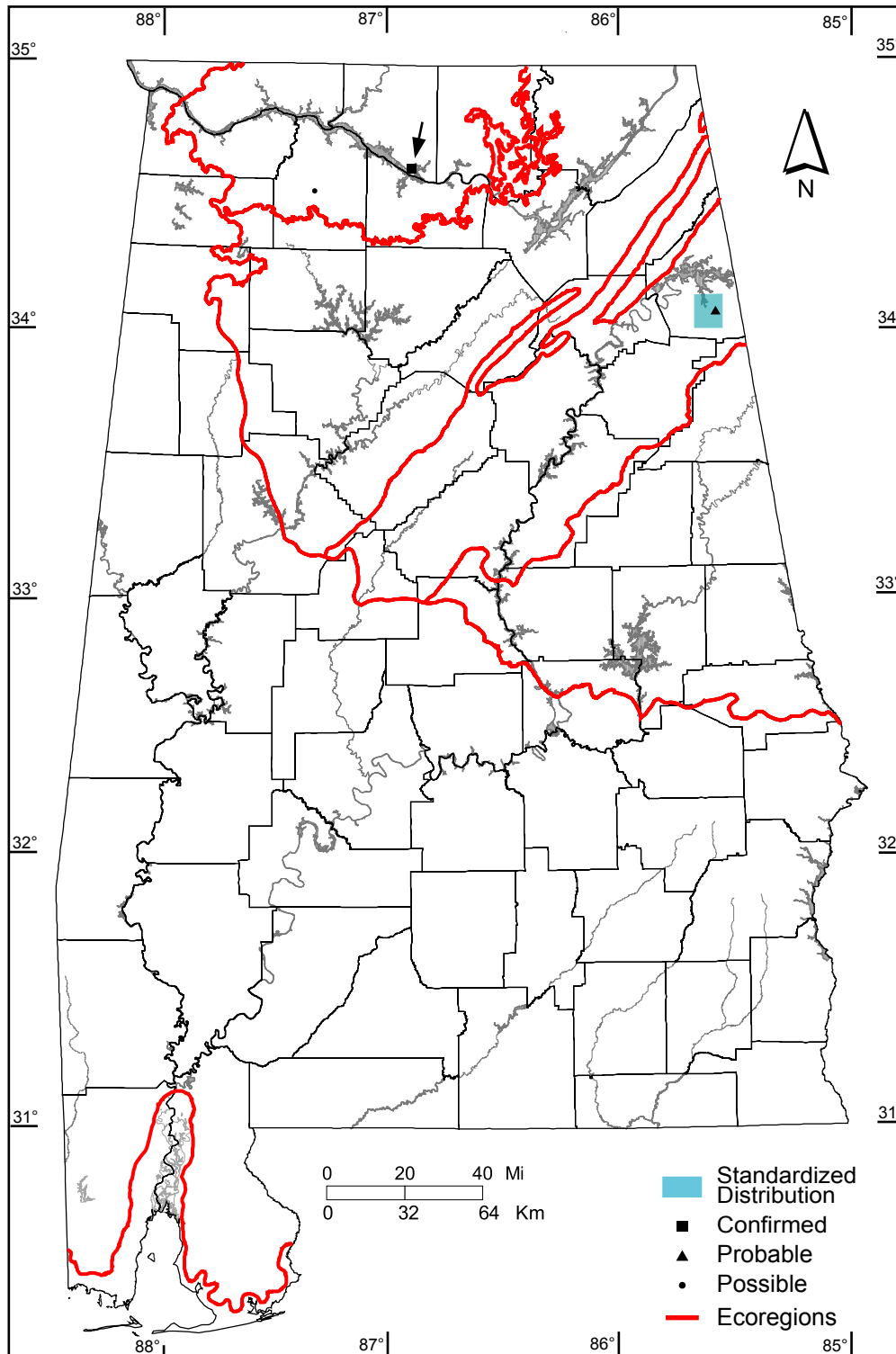
Southern Coastal Plain: 0 of 7 (0%)

Number of Blocks with Breeding Evidence

Total: 3 of 5087 (<1%)

Confirmed: 1 of 5087 (<1%)

Safe Dates: none used



©Alabama Breeding Bird Atlas
All Rights Reserved

Eastern Phoebe (*Sayornis phoebe*)

Number of Priority Blocks with Breeding Evidence

Total: 426 of 585 (73%)

Confirmed: 217 (51%)

Probable: 86 (20%)

Possible: 123 (29%)

Number of Priority Blocks in Ecoregions with Breeding Evidence

Interior Plateau: 48 of 52 (92%)

Southwestern Appalachians: 116 of 124 (94%)

Ridge and Valley: 71 of 72 (99%)

Piedmont: 72 of 76 (95%)

Southeastern Plains: 119 of 254 (47%)

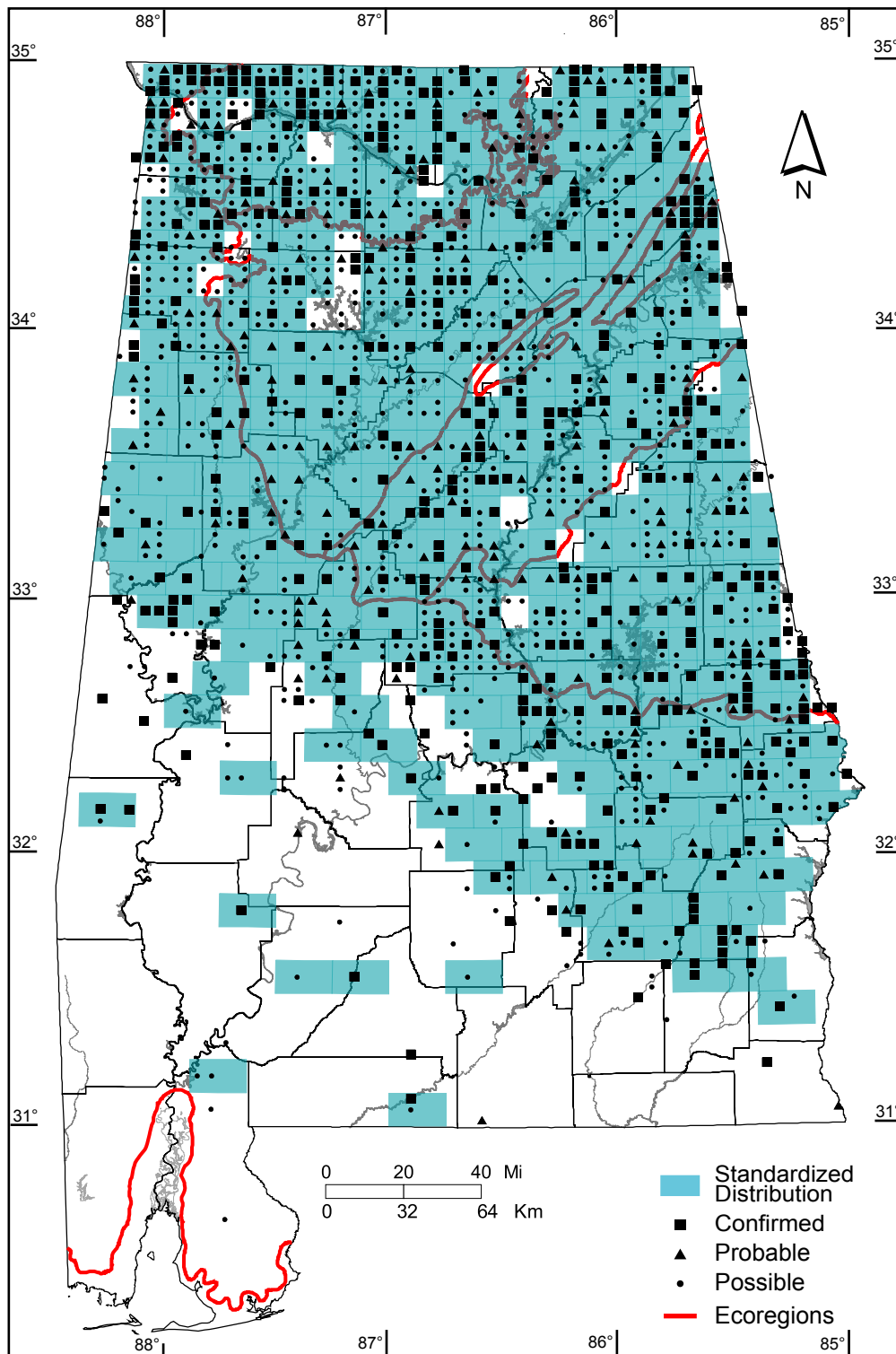
Southern Coastal Plain: 0 of 7 (0%)

Number of Blocks with Breeding Evidence

Total: 1470 of 5087 (29%)

Confirmed: 507 of 5087 (10%)

Safe Dates: April 15 - July 31



©Alabama Breeding Bird Atlas
All Rights Reserved

Great Crested Flycatcher (*Myiarchus crinitus*)

Number of Priority Blocks with Breeding Evidence

Total: 575 of 585 (98%)

Confirmed: 130 (23%)

Probable: 218 (38%)

Possible: 227 (39%)

Number of Priority Blocks in Ecoregions with Breeding Evidence

Interior Plateau: 50 of 52 (96%)

Southwestern Appalachians: 122 of 124 (98%)

Ridge and Valley: 69 of 72 (96%)

Piedmont: 75 of 76 (99%)

Southeastern Plains: 252 of 254 (99%)

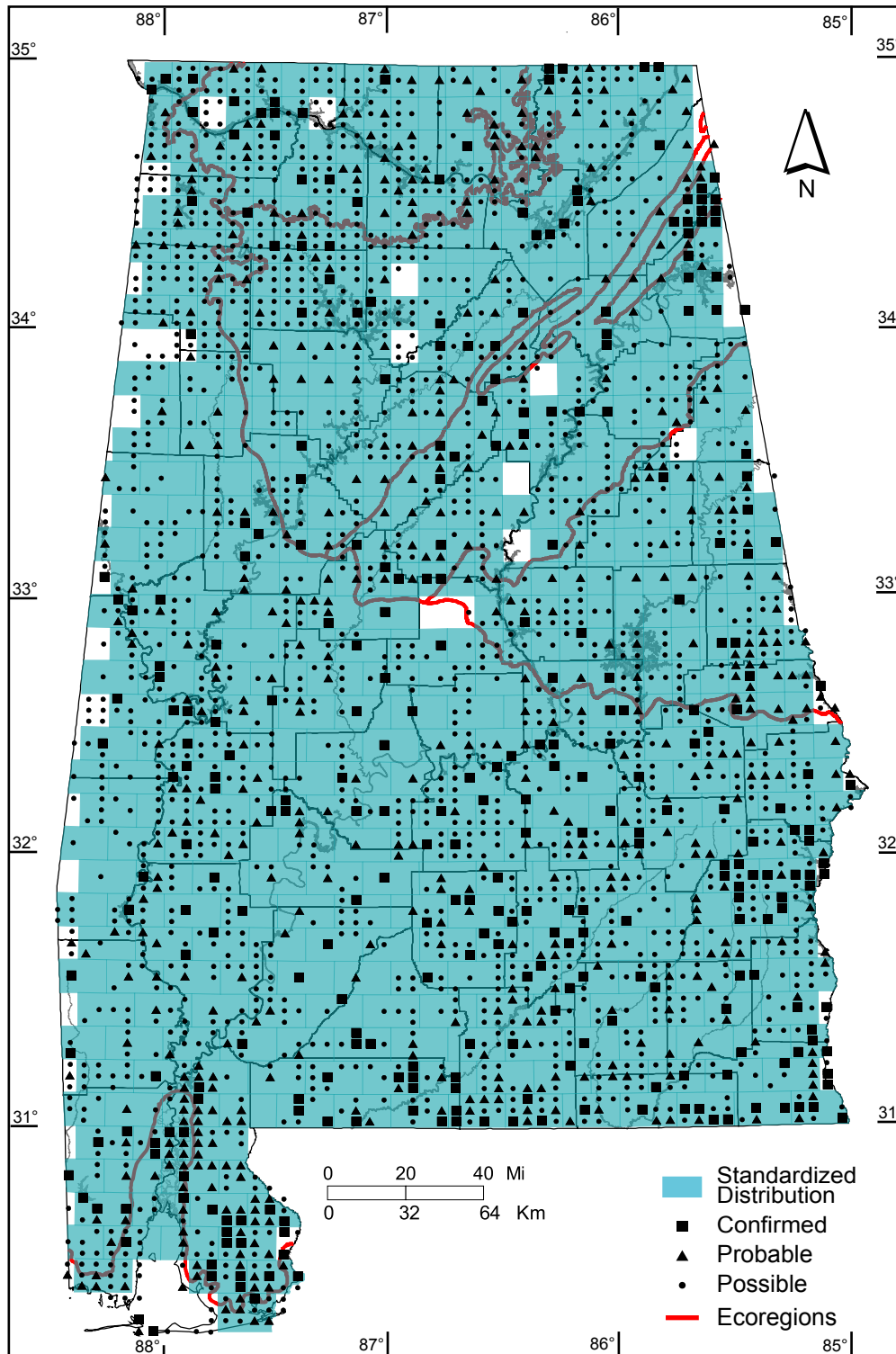
Southern Coastal Plain: 7 of 7 (100%)

Number of Blocks with Breeding Evidence

Total: 2447 of 5087 (48%)

Confirmed: 318 of 5087 (6%)

Safe Dates: May 15 - July 15



©Alabama Breeding Bird Atlas
All Rights Reserved

Eastern Kingbird (*Tyrannus tyrannus*)

Number of Priority Blocks with Breeding Evidence

Total: 569 of 585 (97%)

Confirmed: 186 (33%)

Probable: 232 (41%)

Possible: 151 (26%)

Number of Priority Blocks in Ecoregions with Breeding Evidence

Interior Plateau: 52 of 52 (100%)

Southwestern Appalachians: 119 of 124 (96%)

Ridge and Valley: 72 of 72 (100%)

Piedmont: 71 of 76 (93%)

Southeastern Plains: 248 of 254 (98%)

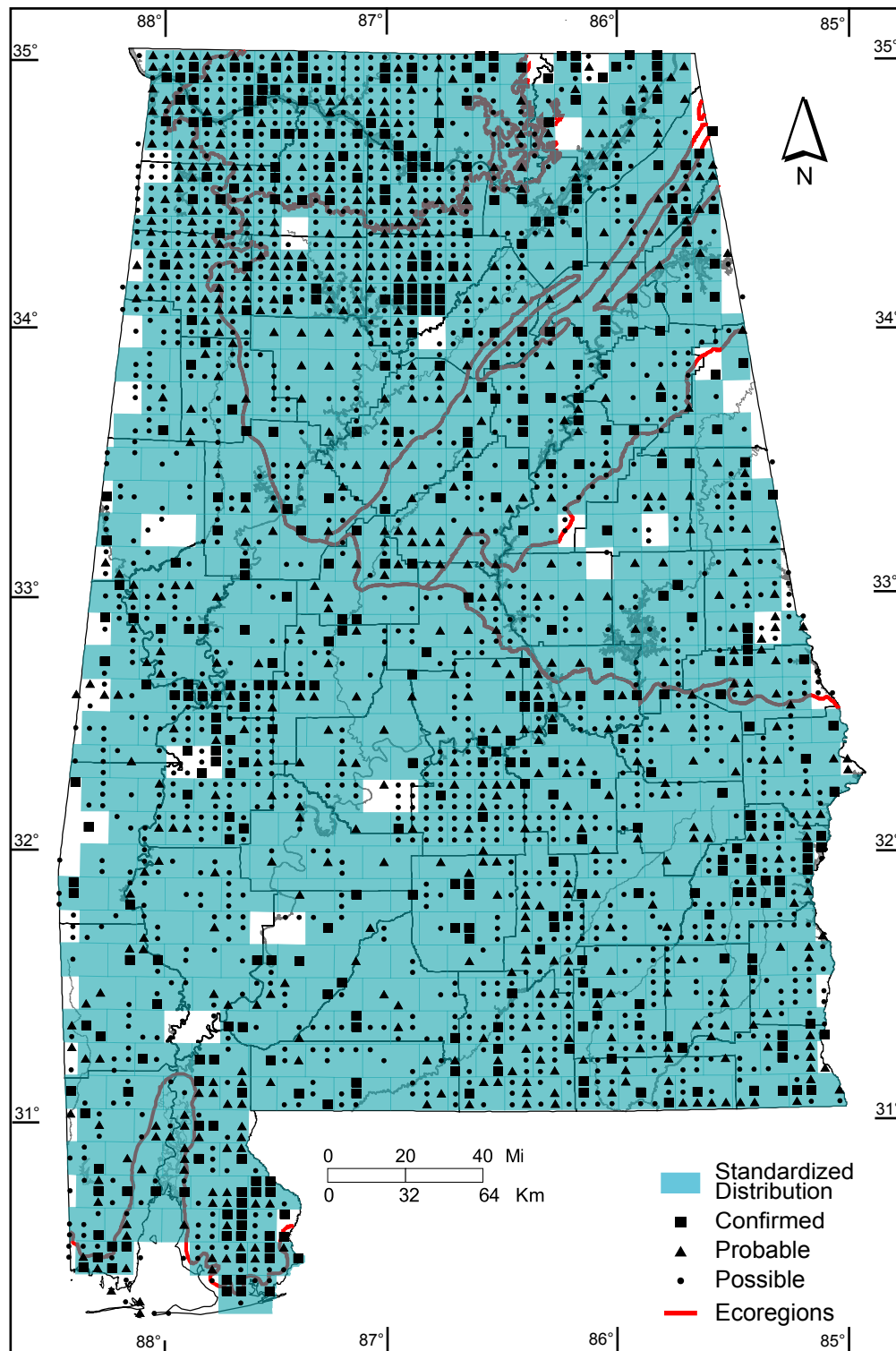
Southern Coastal Plain: 7 of 7 (100%)

Number of Blocks with Breeding Evidence

Total: 2444 of 5087 (48%)

Confirmed: 436 of 5087 (9%)

Safe Dates: May 15 - July 10



©Alabama Breeding Bird Atlas
All Rights Reserved

Gray Kingbird (*Tyrannus dominicensis*)

Number of Priority Blocks with Breeding Evidence

Total: 0 of 585 (0%)

Confirmed: 0 (0%)

Probable: 0 (0%)

Possible: 0 (0%)

Number of Priority Blocks in Ecoregions with Breeding Evidence

Interior Plateau: 0 of 52 (0%)

Southwestern Appalachians: 0 of 124 (0%)

Ridge and Valley: 0 of 72 (0%)

Piedmont: 0 of 76 (0%)

Southeastern Plains: 0 of 254 (0%)

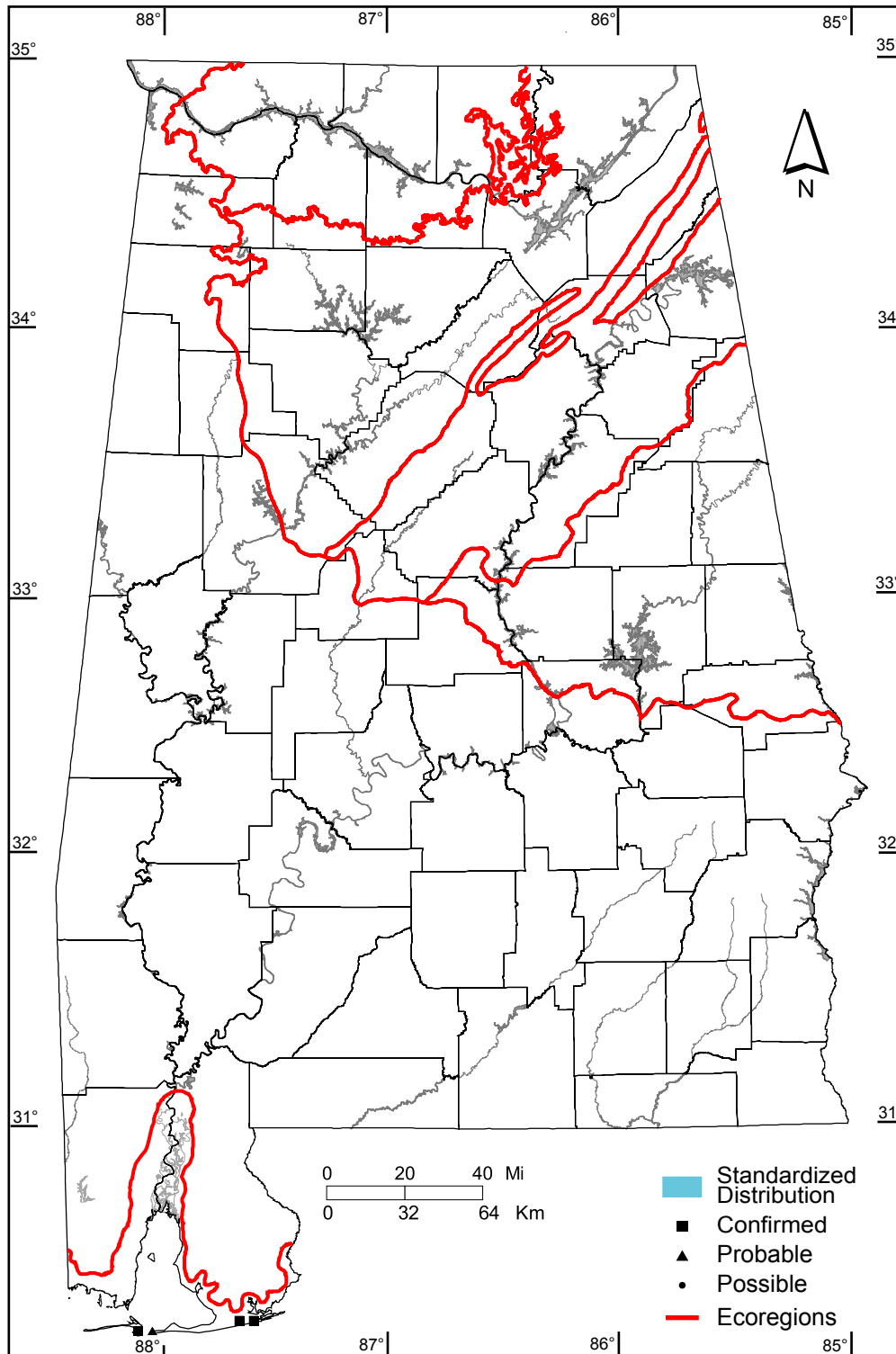
Southern Coastal Plain: 0 of 7 (0%)

Number of Blocks with Breeding Evidence

Total: 4 of 5087 (<1%)

Confirmed: 3 of 5087 (<1%)

Safe Dates: May 1 - July 10



©Alabama Breeding Bird Atlas
All Rights Reserved

Scissor-tailed Flycatcher (*Tyrannus forficatus*)

Number of Priority Blocks with Breeding Evidence

Total: 1 of 585 (<1%)

Confirmed: 0 (0%)

Probable: 1 (100%)

Possible: 0 (0%)

Number of Priority Blocks in Ecoregions with Breeding Evidence

Interior Plateau: 0 of 52 (0%)

Southwestern Appalachians: 0 of 124 (0%)

Ridge and Valley: 1 of 72 (1%)

Piedmont: 0 of 76 (0%)

Southeastern Plains: 0 of 254 (0%)

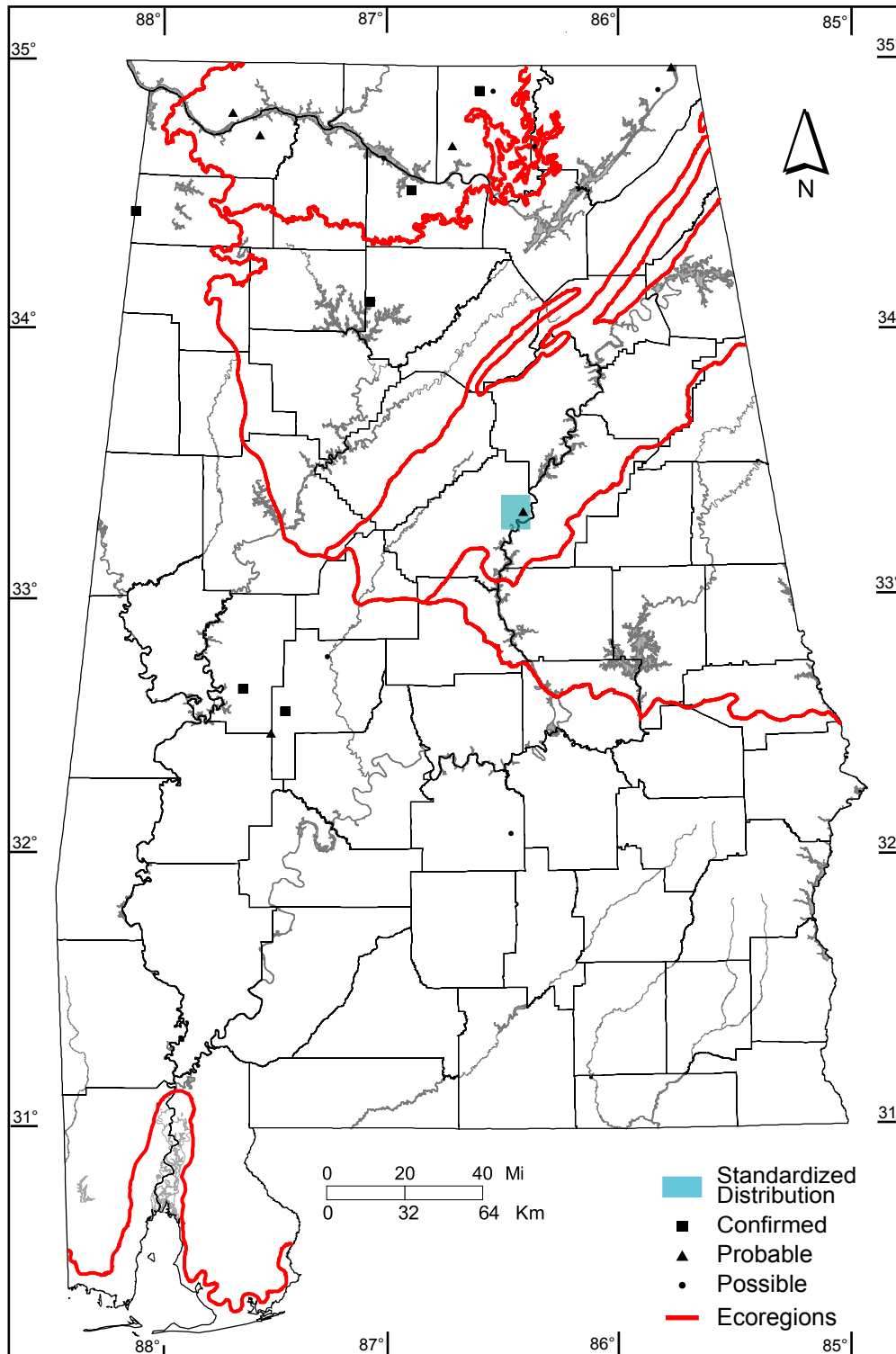
Southern Coastal Plain: 0 of 7 (0%)

Number of Blocks with Breeding Evidence

Total: 18 of 5087 (<1%)

Confirmed: 6 of 5087 (<1%)

Safe Dates: May 15 - July 31



©Alabama Breeding Bird Atlas
All Rights Reserved

Loggerhead Shrike (*Lanius ludovicianus*)

Number of Priority Blocks with Breeding Evidence

Total: 250 of 585 (43%)

Confirmed: 73 (29%)

Probable: 44 (18%)

Possible: 133 (53%)

Number of Priority Blocks in Ecoregions with Breeding Evidence

Interior Plateau: 36 of 52 (69%)

Southwestern Appalachians: 57 of 124 (46%)

Ridge and Valley: 28 of 72 (39%)

Piedmont: 14 of 76 (18%)

Southeastern Plains: 111 of 254 (44%)

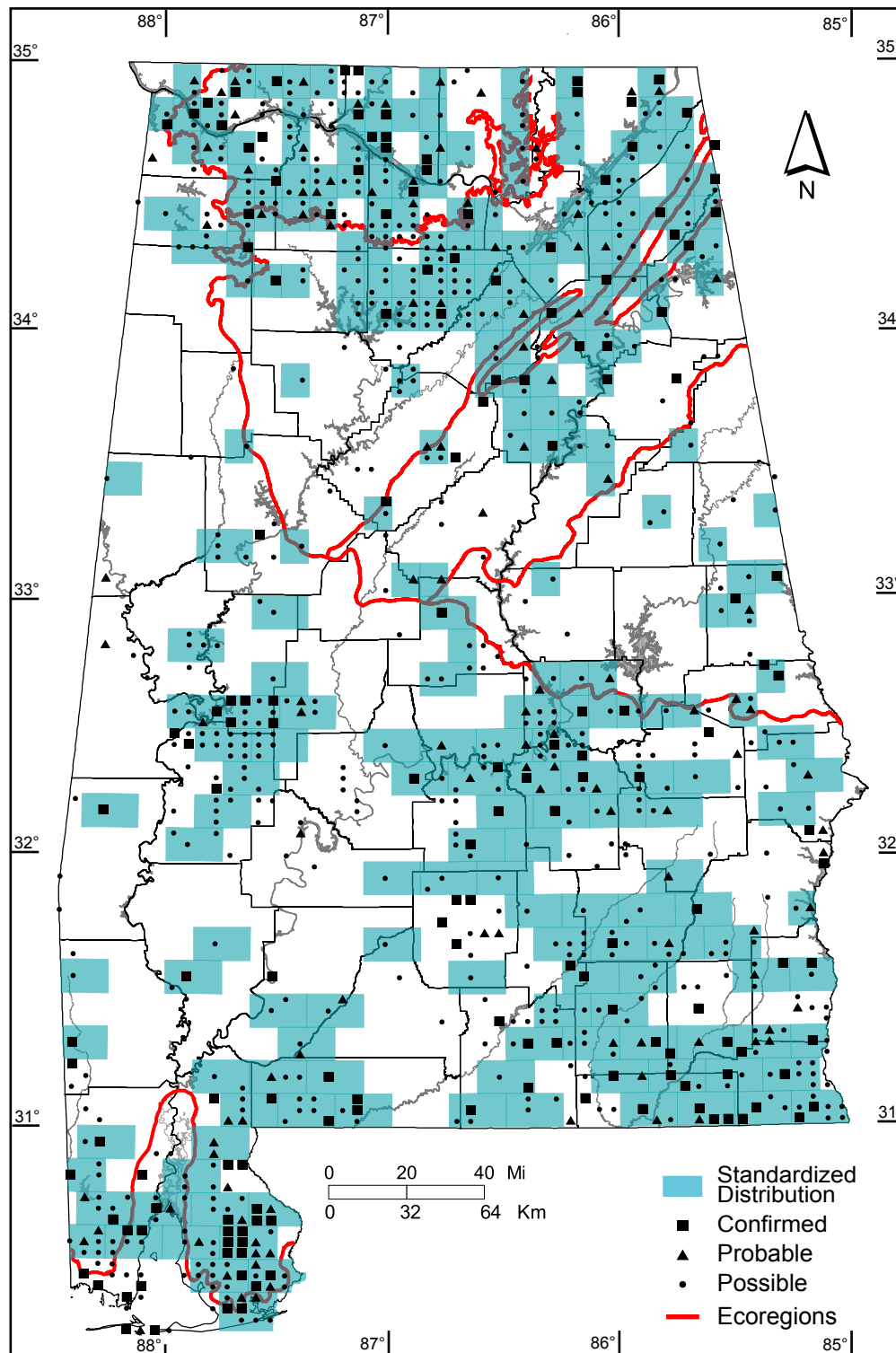
Southern Coastal Plain: 4 of 7 (57%)

Number of Blocks with Breeding Evidence

Total: 855 of 5087 (17%)

Confirmed: 165 of 5087 (3%)

Safe Dates: April 15 - July 31



©Alabama Breeding Bird Atlas
All Rights Reserved

White-eyed Vireo (*Vireo griseus*)

Number of Priority Blocks with Breeding Evidence

Total: 582 of 585 (99%)

Confirmed: 85 (15%)

Probable: 334 (57%)

Possible: 163 (28%)

Number of Priority Blocks in Ecoregions with Breeding Evidence

Interior Plateau: 52 of 52 (100%)

Southwestern Appalachians: 124 of 124 (100%)

Ridge and Valley: 72 of 72 (100%)

Piedmont: 76 of 76 (100%)

Southeastern Plains: 252 of 254 (99%)

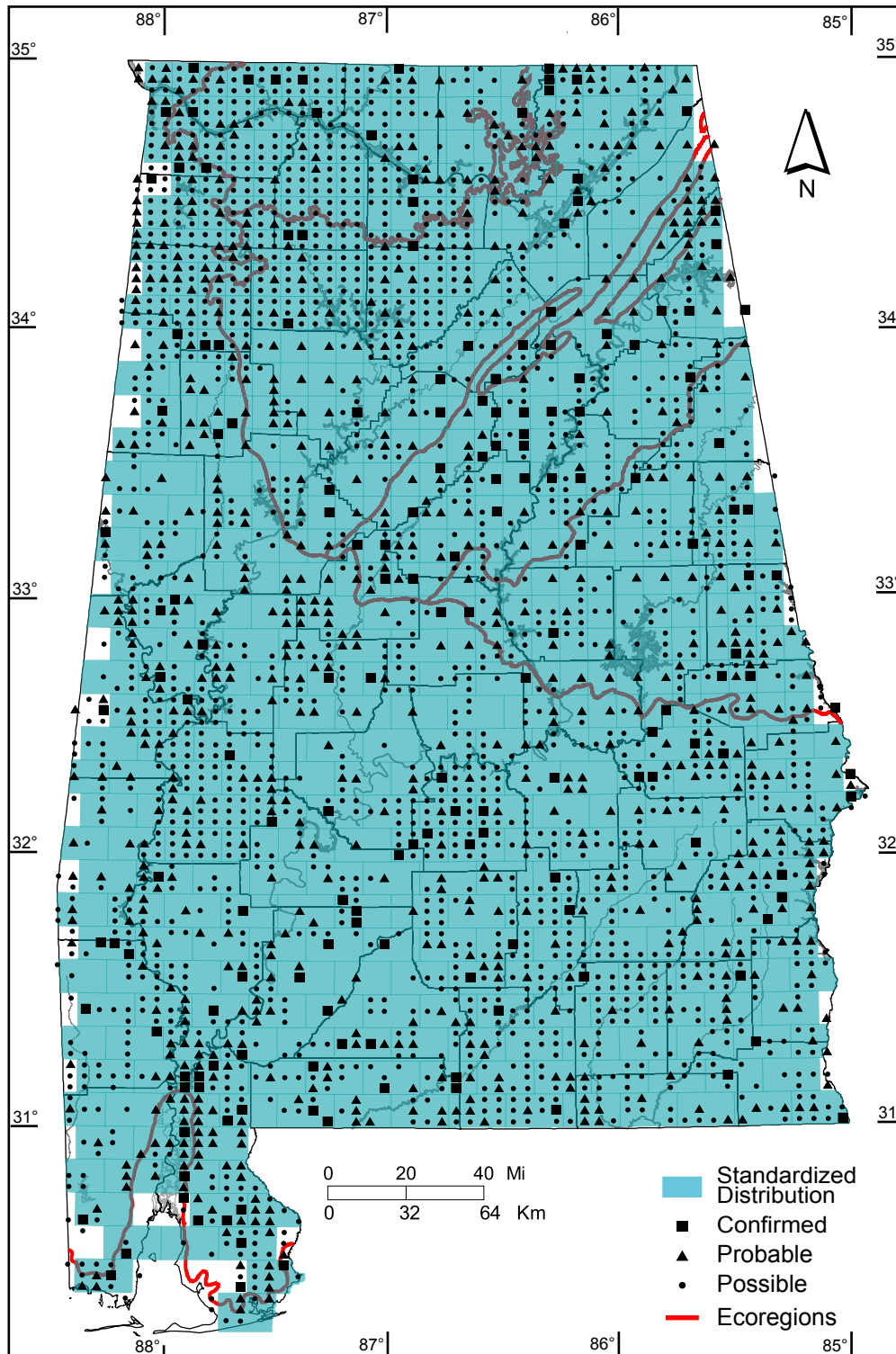
Southern Coastal Plain: 6 of 7 (86%)

Number of Blocks with Breeding Evidence

Total: 2673 of 5087 (53%)

Confirmed: 177 of 5087 (3%)

Safe Dates: May 20 - July 15



©Alabama Breeding Bird Atlas
All Rights Reserved

Yellow-throated Vireo (*Vireo flavifrons*)

Number of Priority Blocks with Breeding Evidence

Total: 475 of 585 (81%)

Confirmed: 14 (3%)

Probable: 113 (24%)

Possible: 348 (73%)

Number of Priority Blocks in Ecoregions with Breeding Evidence

Interior Plateau: 24 of 52 (46%)

Southwestern Appalachians: 108 of 124 (87%)

Ridge and Valley: 57 of 72 (79%)

Piedmont: 72 of 76 (95%)

Southeastern Plains: 211 of 254 (83%)

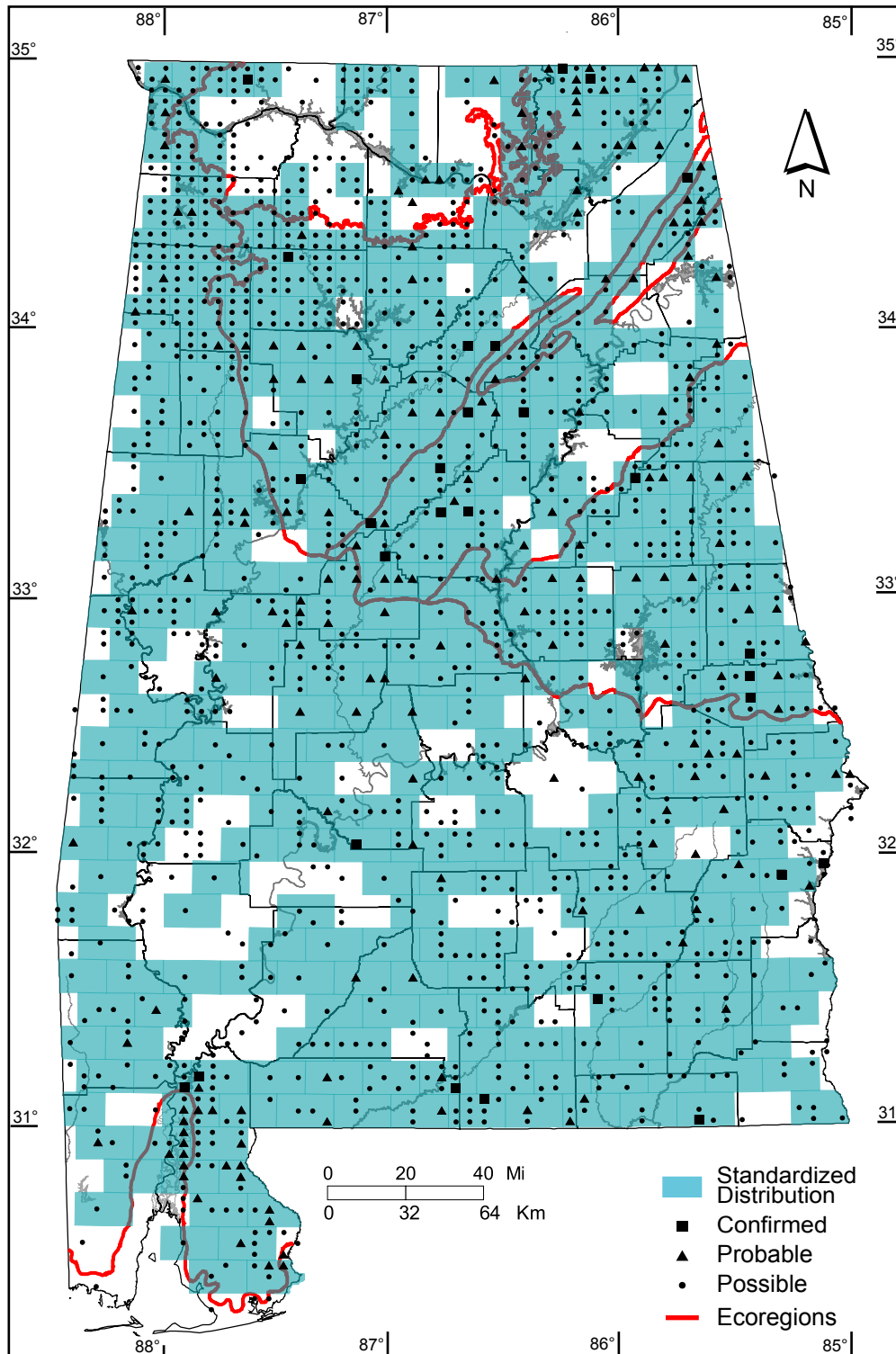
Southern Coastal Plain: 3 of 7 (43%)

Number of Blocks with Breeding Evidence

Total: 1522 of 5087 (30%)

Confirmed: 29 of 5087 (1%)

Safe Dates: May 15 - July 15



©Alabama Breeding Bird Atlas
All Rights Reserved

Blue-headed Vireo (*Vireo solitarius*)

Number of Priority Blocks with Breeding Evidence

Total: 25 of 585 (4%)

Confirmed: 2 (8%)

Probable: 4 (16%)

Possible: 19 (76%)

Number of Priority Blocks in Ecoregions with Breeding Evidence

Interior Plateau: 0 of 52 (0%)

Southwestern Appalachians: 6 of 124 (5%)

Ridge and Valley: 8 of 72 (11%)

Piedmont: 11 of 76 (14%)

Southeastern Plains: 0 of 254 (0%)

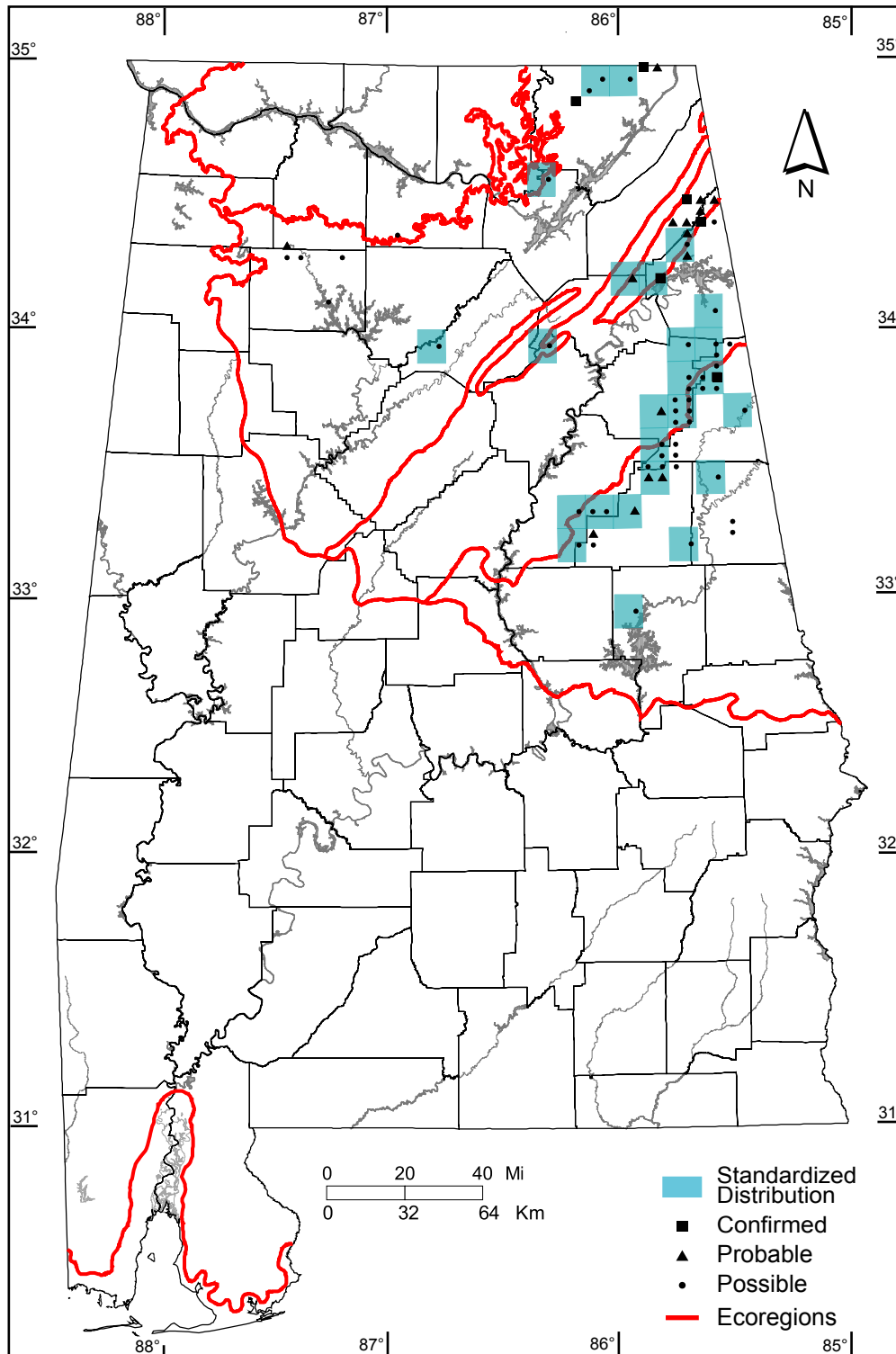
Southern Coastal Plain: 0 of 7 (0%)

Number of Blocks with Breeding Evidence

Total: 69 of 5087 (1%)

Confirmed: 6 of 5087 (<1%)

Safe Dates: May 15 - July 15



©Alabama Breeding Bird Atlas
All Rights Reserved

Warbling Vireo (*Vireo gilvus*)

Number of Priority Blocks with Breeding Evidence

Total: 1 of 585 (<1%)

Confirmed: 0 (0%)

Probable: 0 (0%)

Possible: 1 (100%)

Number of Priority Blocks in Ecoregions with Breeding Evidence

Interior Plateau: 0 of 52 (0%)

Southwestern Appalachians: 0 of 124 (0%)

Ridge and Valley: 0 of 72 (0%)

Piedmont: 0 of 76 (0%)

Southeastern Plains: 1 of 254 (<1%)

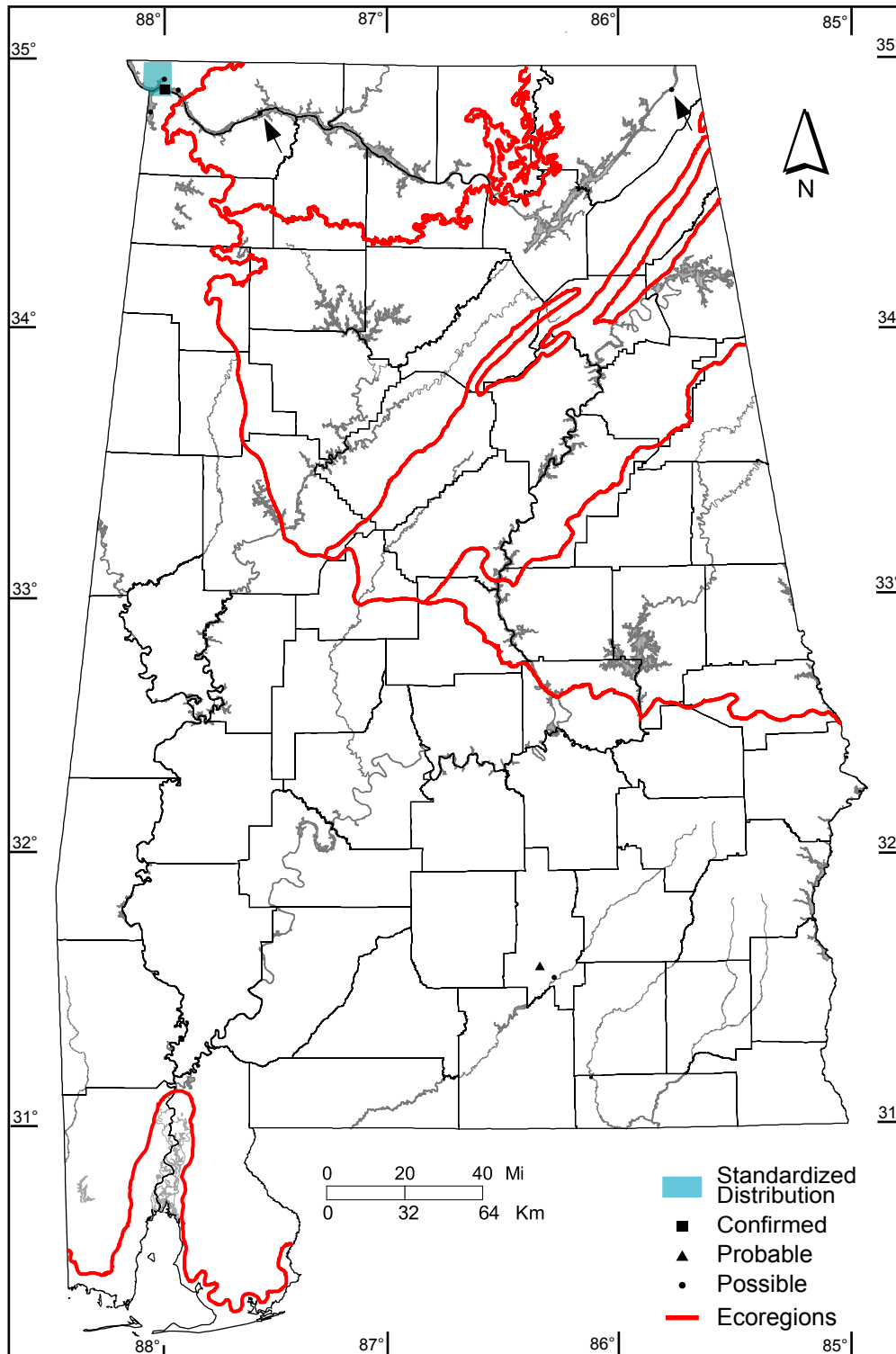
Southern Coastal Plain: 0 of 7 (0%)

Number of Blocks with Breeding Evidence

Total: 8 of 5087 (<1%)

Confirmed: 1 of 5087 (<1%)

Safe Dates: May 25 - July 15



©Alabama Breeding Bird Atlas
All Rights Reserved

Red-eyed Vireo (*Vireo olivaceus*)

Number of Priority Blocks with Breeding Evidence

Total: 555 of 585 (95%)

Confirmed: 43 (8%)

Probable: 286 (51%)

Possible: 226 (41%)

Number of Priority Blocks in Ecoregions with Breeding Evidence

Interior Plateau: 44 of 52 (85%)

Southwestern Appalachians: 122 of 124 (98%)

Ridge and Valley: 69 of 72 (96%)

Piedmont: 75 of 76 (99%)

Southeastern Plains: 240 of 254 (94%)

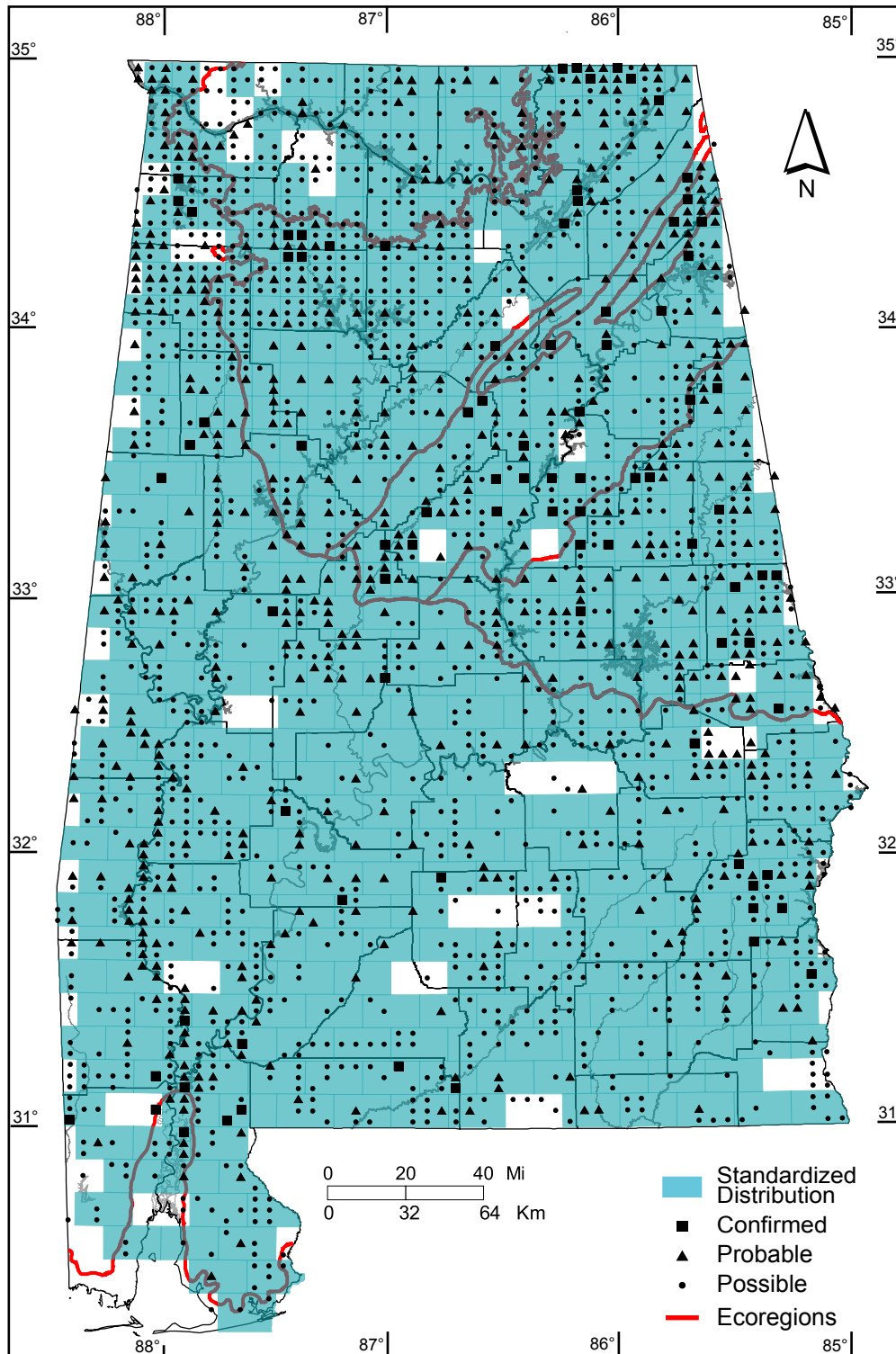
Southern Coastal Plain: 5 of 7 (71%)

Number of Blocks with Breeding Evidence

Total: 2045 of 5087 (40%)

Confirmed: 86 of 5087 (2%)

Safe Dates: May 25 - July 15



©Alabama Breeding Bird Atlas
All Rights Reserved

Blue Jay (*Cyanocitta cristata*)

Number of Priority Blocks with Breeding Evidence

Total: 582 of 585 (99%)

Confirmed: 191 (33%)

Probable: 250 (43%)

Possible: 141 (24%)

Number of Priority Blocks in Ecoregions with Breeding Evidence

Interior Plateau: 52 of 52 (100%)

Southwestern Appalachians: 123 of 124 (99%)

Ridge and Valley: 72 of 72 (100%)

Piedmont: 76 of 76 (100%)

Southeastern Plains: 252 of 254 (99%)

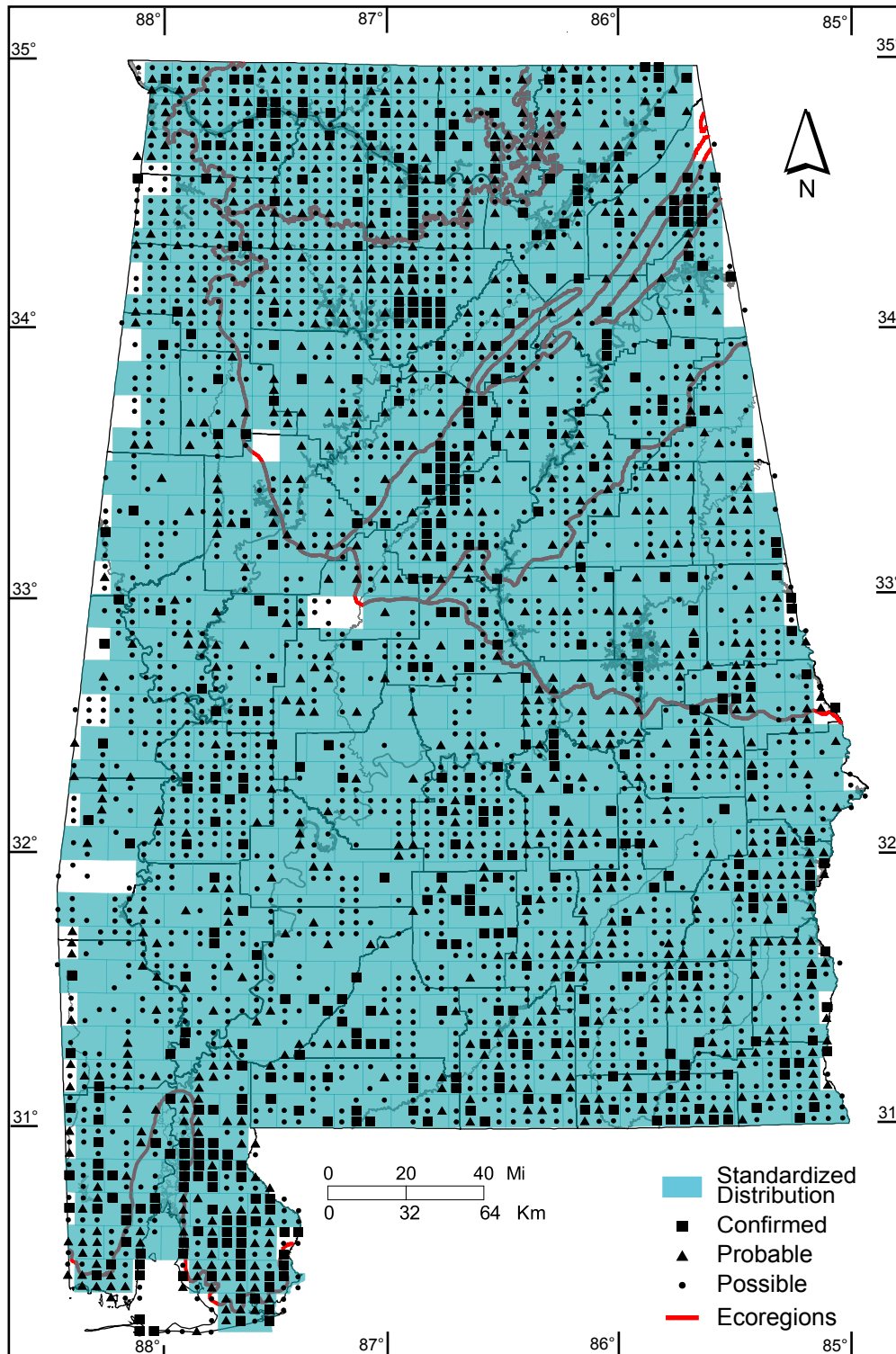
Southern Coastal Plain: 7 of 7 (100%)

Number of Blocks with Breeding Evidence

Total: 3020 of 5087 (59%)

Confirmed: 492 of 5087 (10%)

Safe Dates: May 1 - July 15



©Alabama Breeding Bird Atlas
All Rights Reserved

American Crow (*Corvus brachyrhynchos*)

Number of Priority Blocks with Breeding Evidence

Total: 583 of 585 (99%)

Confirmed: 187 (32%)

Probable: 244 (42%)

Possible: 152 (26%)

Number of Priority Blocks in Ecoregions with Breeding Evidence

Interior Plateau: 52 of 52 (100%)

Southwestern Appalachians: 124 of 124 (100%)

Ridge and Valley: 71 of 72 (99%)

Piedmont: 76 of 76 (100%)

Southeastern Plains: 254 of 254 (100%)

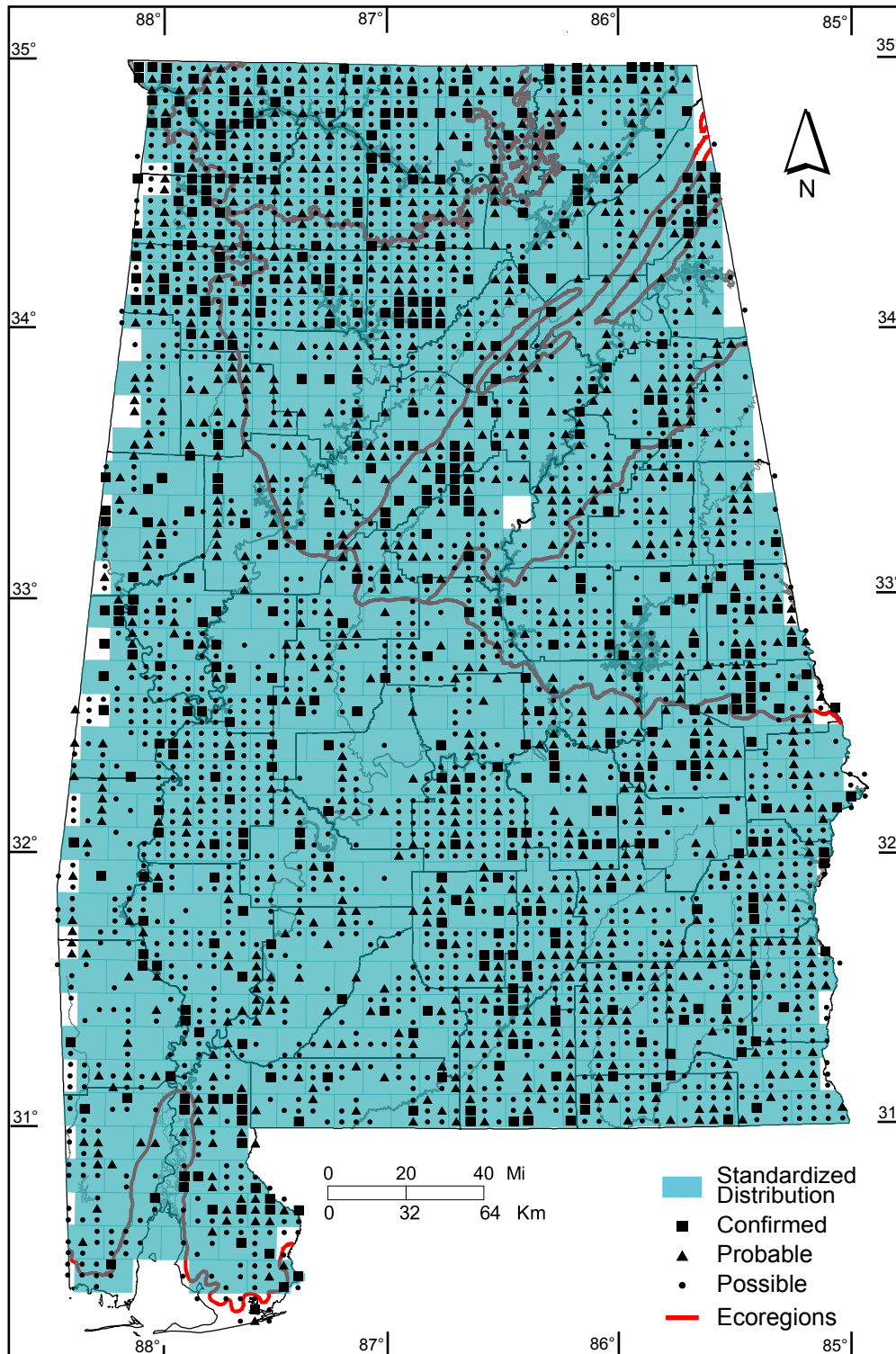
Southern Coastal Plain: 6 of 7 (86%)

Number of Blocks with Breeding Evidence

Total: 3060 of 5087 (60%)

Confirmed: 474 of 5087 (9%)

Safe Dates: April 1 - July 15



©Alabama Breeding Bird Atlas
All Rights Reserved

Fish Crow (*Corvus ossifragus*)

Number of Priority Blocks with Breeding Evidence

Total: 177 of 585 (30%)

Confirmed: 14 (8%)

Probable: 31 (17%)

Possible: 132 (75%)

Number of Priority Blocks in Ecoregions with Breeding Evidence

Interior Plateau: 1 of 52 (2%)

Southwestern Appalachians: 6 of 124 (5%)

Ridge and Valley: 13 of 72 (18%)

Piedmont: 19 of 76 (25%)

Southeastern Plains: 131 of 254 (52%)

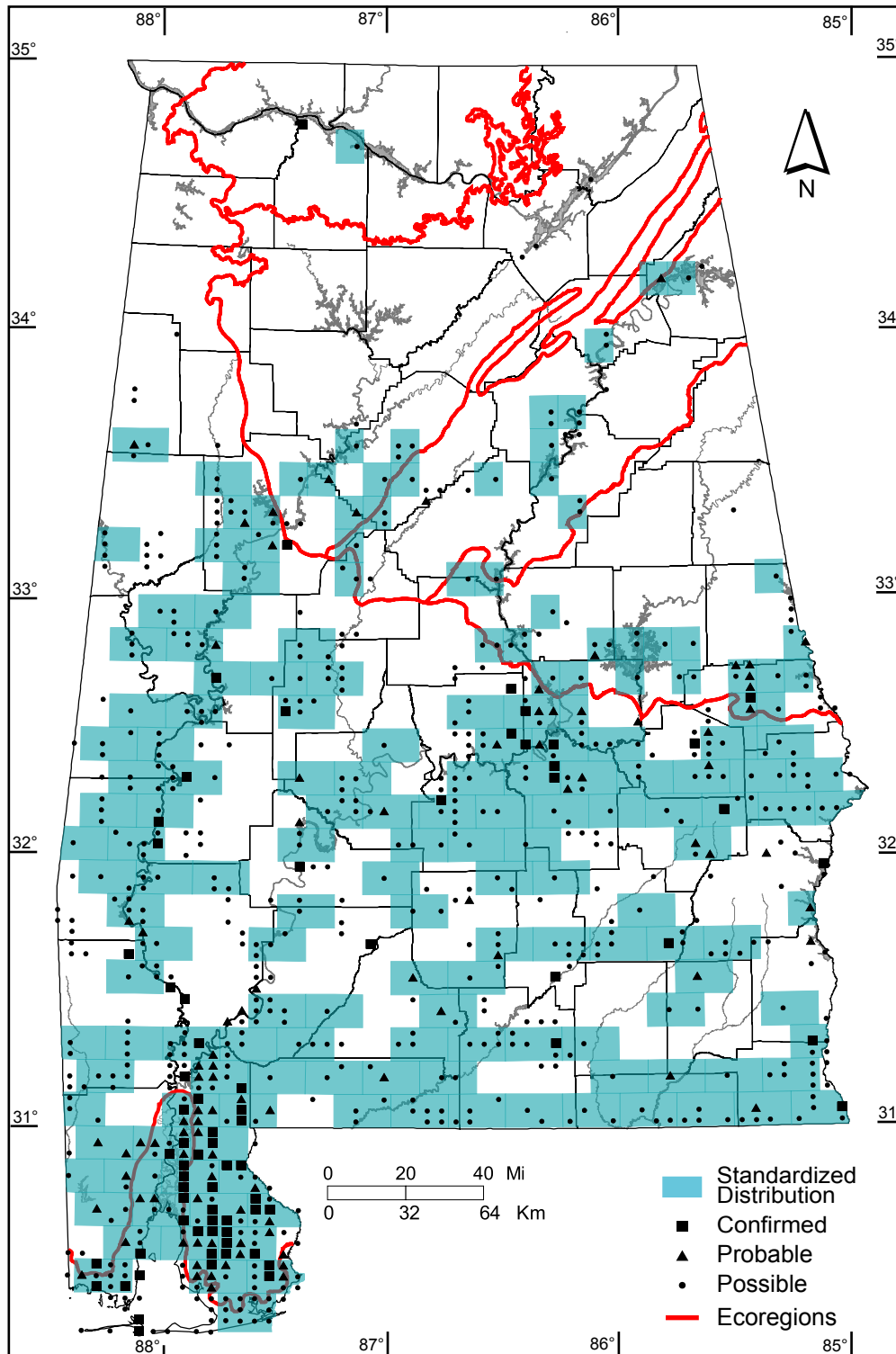
Southern Coastal Plain: 7 of 7 (100%)

Number of Blocks with Breeding Evidence

Total: 730 of 5087 (14%)

Confirmed: 72 of 5087 (1%)

Safe Dates: April 15 - June 15



©Alabama Breeding Bird Atlas
All Rights Reserved

Horned Lark (*Eremophila alpestris*)

Number of Priority Blocks with Breeding Evidence

Total: 32 of 585 (5%)

Confirmed: 2 (6%)

Probable: 10 (31%)

Possible: 20 (63%)

Number of Priority Blocks in Ecoregions with Breeding Evidence

Interior Plateau: 21 of 52 (40%)

Southwestern Appalachians: 9 of 124 (7%)

Ridge and Valley: 2 of 72 (3%)

Piedmont: 0 of 76 (0%)

Southeastern Plains: 0 of 254 (0%)

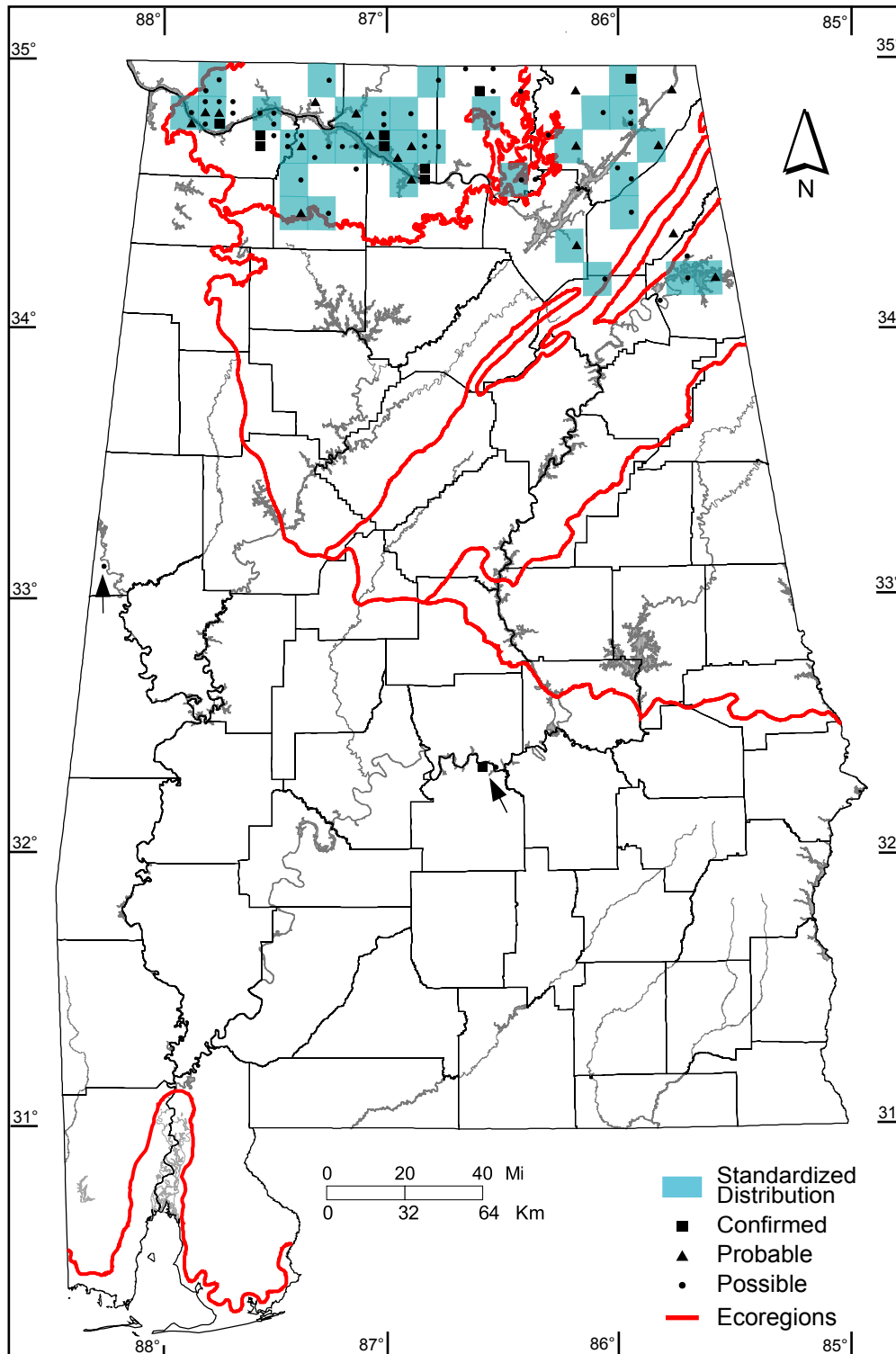
Southern Coastal Plain: 0 of 7 (0%)

Number of Blocks with Breeding Evidence

Total: 77 of 5087 (2%)

Confirmed: 9 of 5087 (<1%)

Safe Dates: April 1 - July 15



©Alabama Breeding Bird Atlas
All Rights Reserved

Purple Martin (*Progne subis*)

Number of Priority Blocks with Breeding Evidence

Total: 523 of 585 (89%)

Confirmed: 405 (77%)

Probable: 34 (7%)

Possible: 84 (16%)

Number of Priority Blocks in Ecoregions with Breeding Evidence

Interior Plateau: 52 of 52 (100%)

Southwestern Appalachians: 114 of 124 (92%)

Ridge and Valley: 59 of 72 (82%)

Piedmont: 67 of 76 (88%)

Southeastern Plains: 224 of 254 (88%)

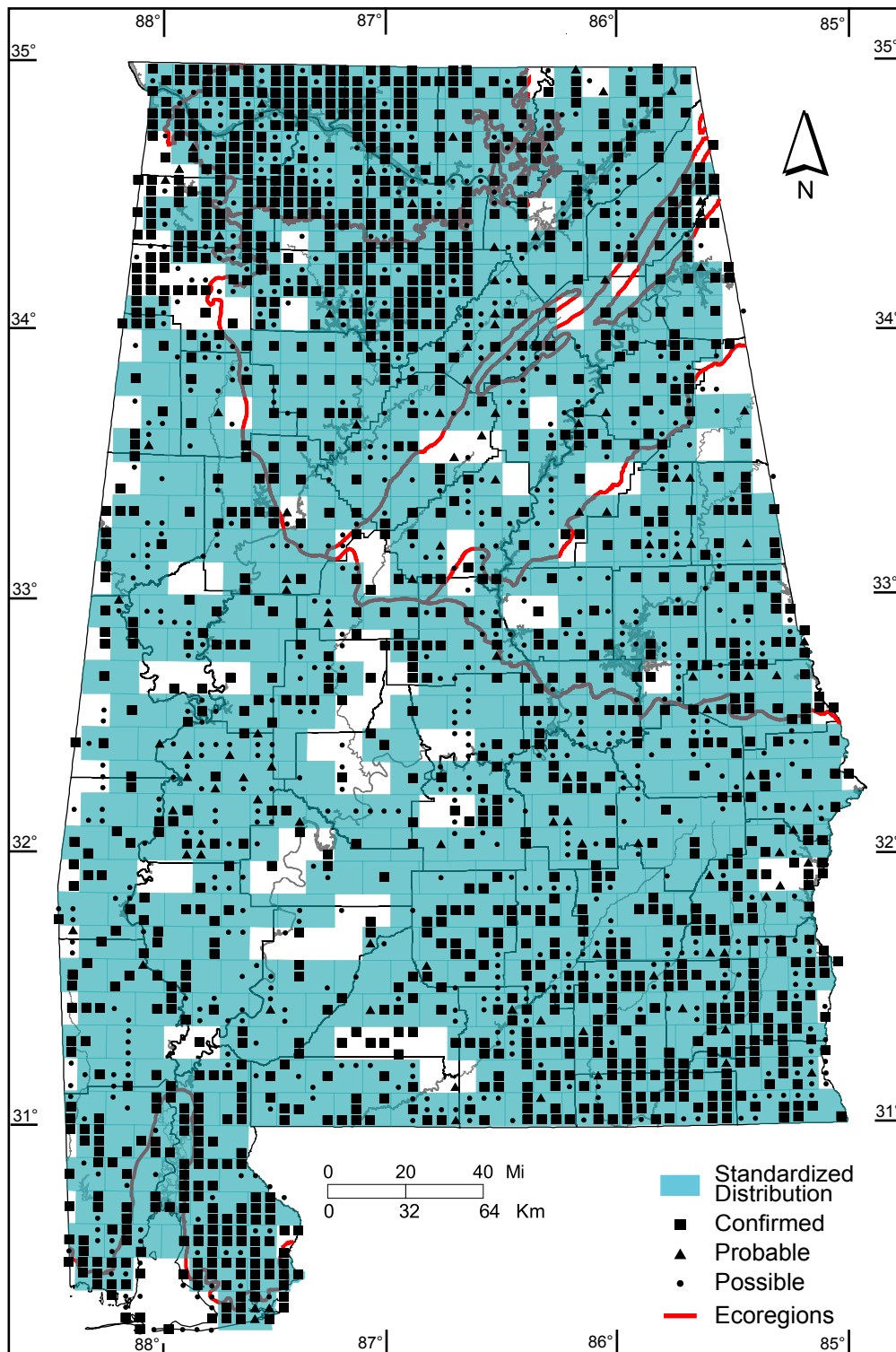
Southern Coastal Plain: 7 of 7 (100%)

Number of Blocks with Breeding Evidence

Total: 2085 of 5087 (41%)

Confirmed: 1298 of 5087 (26%)

Safe Dates: April 25 - June 20



©Alabama Breeding Bird Atlas
All Rights Reserved

Tree Swallow (*Tachycineta bicolor*)

Number of Priority Blocks with Breeding Evidence

Total: 33 of 585 (6%)

Confirmed: 16 (49%)

Probable: 6 (18%)

Possible: 11 (33%)

Number of Priority Blocks in Ecoregions with Breeding Evidence

Interior Plateau: 4 of 52 (8%)

Southwestern Appalachians: 12 of 124 (10%)

Ridge and Valley: 10 of 72 (14%)

Piedmont: 3 of 76 (4%)

Southeastern Plains: 4 of 254 (2%)

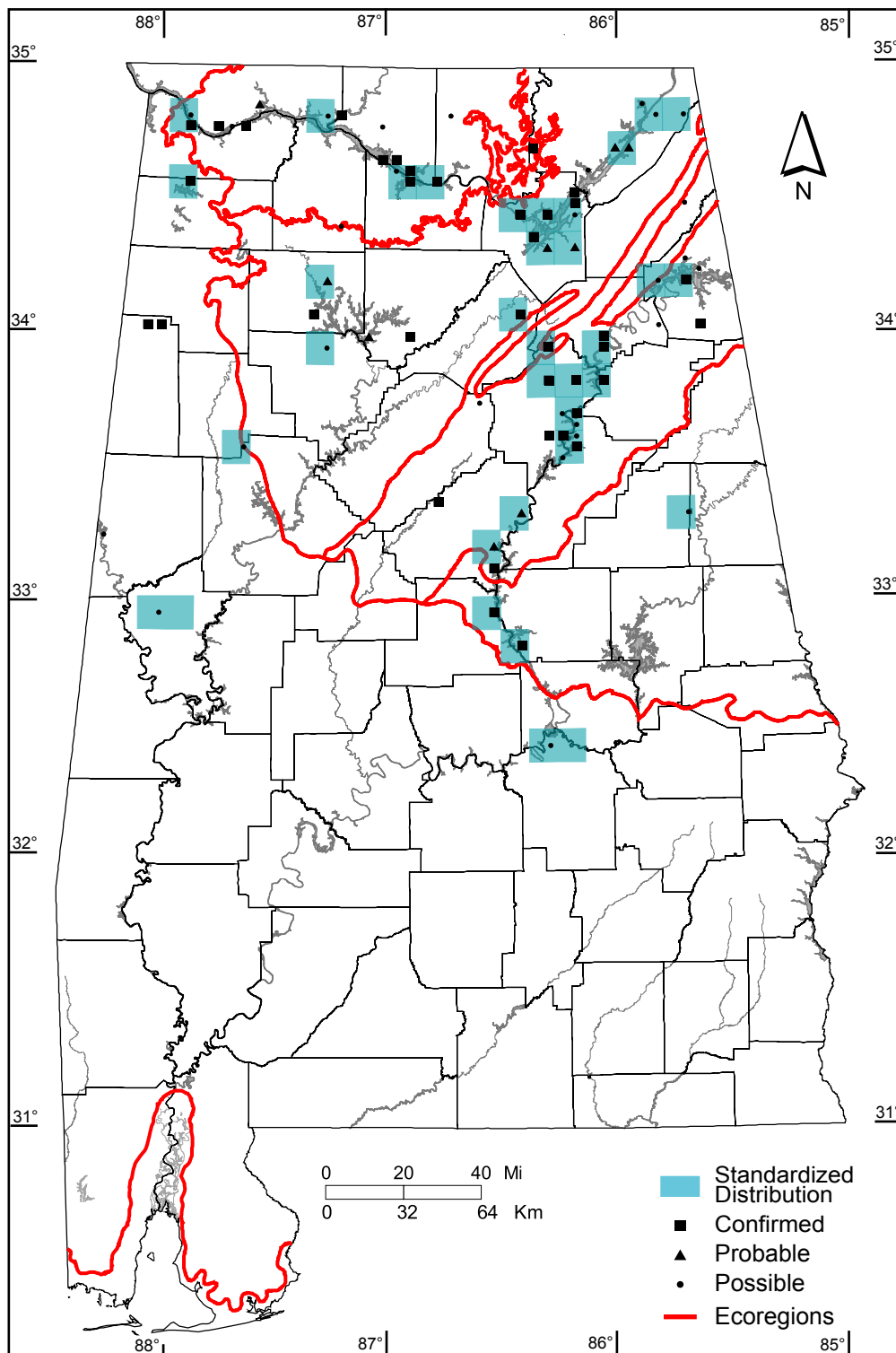
Southern Coastal Plain: 0 of 7 (0%)

Number of Blocks with Breeding Evidence

Total: 74 of 5087 (1%)

Confirmed: 37 of 5087 (1%)

Safe Dates: May 15 - July 10



©Alabama Breeding Bird Atlas
All Rights Reserved

Northern Rough-winged Swallow (*Stelgidopteryx serripennis*)

Number of Priority Blocks with Breeding Evidence

Total: 424 of 585 (72%)

Confirmed: 104 (25%)

Probable: 103 (24%)

Possible: 217 (51%)

Number of Priority Blocks in Ecoregions with Breeding Evidence

Interior Plateau: 38 of 52 (73%)

Southwestern Appalachians: 106 of 124 (85%)

Ridge and Valley: 55 of 72 (76%)

Piedmont: 54 of 76 (71%)

Southeastern Plains: 168 of 254 (66%)

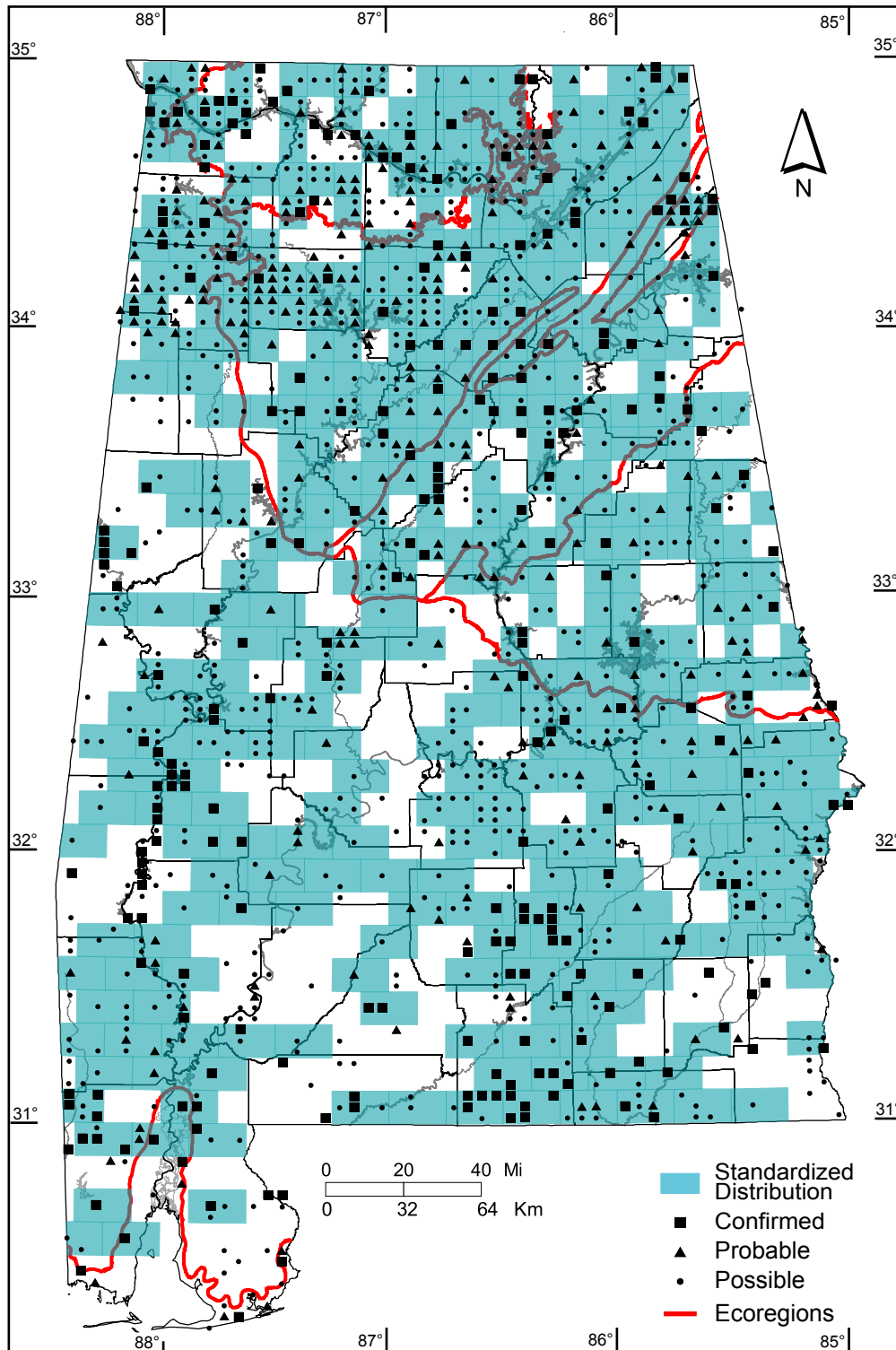
Southern Coastal Plain: 3 of 7 (43%)

Number of Blocks with Breeding Evidence

Total: 1290 of 5087 (25%)

Confirmed: 255 of 5087 (5%)

Safe Dates: May 15 - July 10



©Alabama Breeding Bird Atlas
All Rights Reserved

Cliff Swallow (*Petrochelidon pyrrhonota*)

Number of Priority Blocks with Breeding Evidence

Total: 110 of 585 (19%)

Confirmed: 75 (68%)

Probable: 9 (8%)

Possible: 26 (24%)

Number of Priority Blocks in Ecoregions with Breeding Evidence

Interior Plateau: 25 of 52 (48%)

Southwestern Appalachians: 33 of 124 (27%)

Ridge and Valley: 18 of 72 (25%)

Piedmont: 11 of 76 (14%)

Southeastern Plains: 20 of 254 (8%)

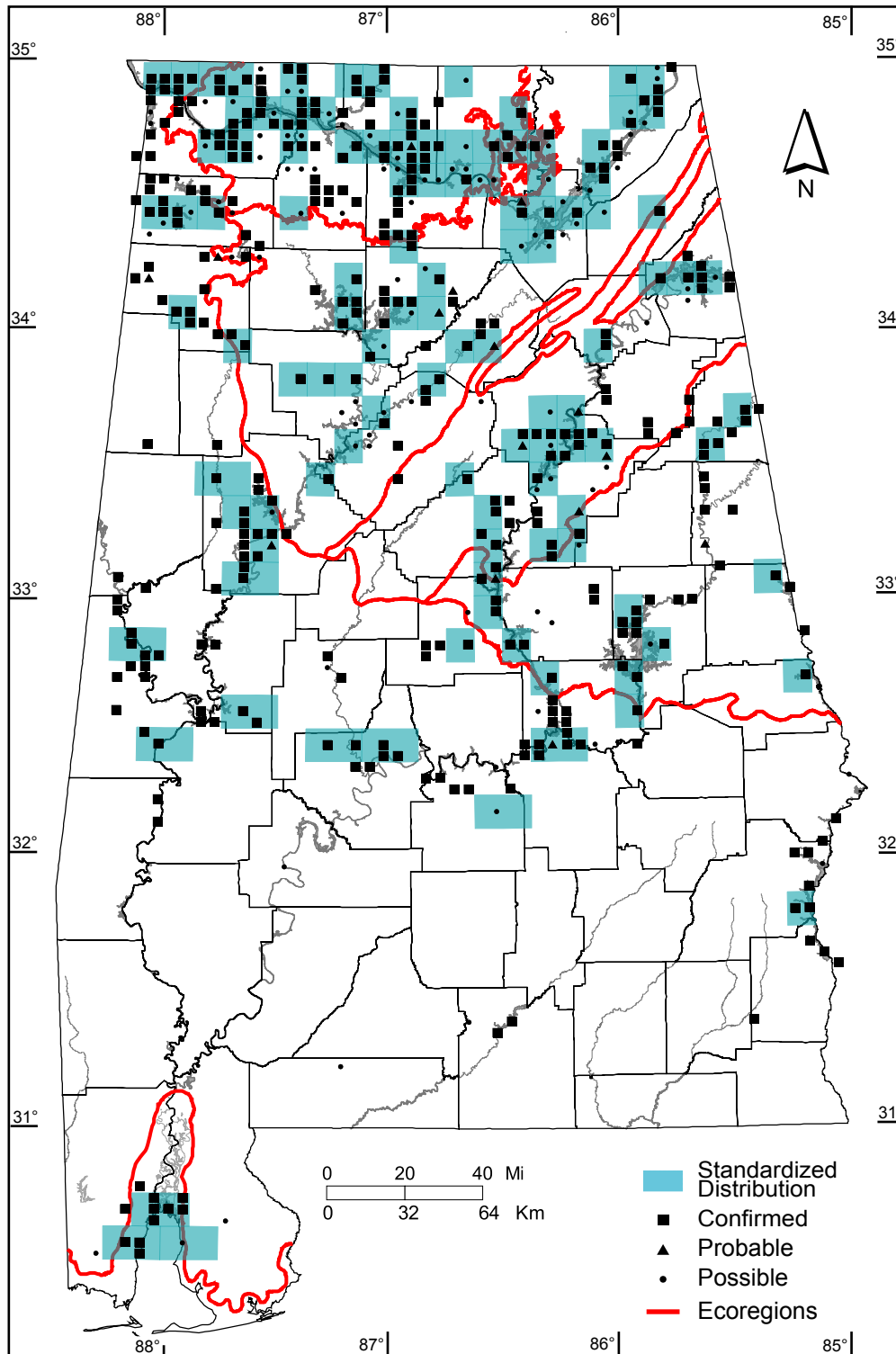
Southern Coastal Plain: 3 of 7 (43%)

Number of Blocks with Breeding Evidence

Total: 464 of 5087 (9%)

Confirmed: 348 of 5087 (7%)

Safe Dates: May 15 - June 30



©Alabama Breeding Bird Atlas
All Rights Reserved

Barn Swallow (*Hirundo rustica*)

Number of Priority Blocks with Breeding Evidence

Total: 543 of 585 (93%)

Confirmed: 385 (71%)

Probable: 62 (11%)

Possible: 96 (18%)

Number of Priority Blocks in Ecoregions with Breeding Evidence

Interior Plateau: 52 of 52 (100%)

Southwestern Appalachians: 118 of 124 (95%)

Ridge and Valley: 71 of 72 (99%)

Piedmont: 69 of 76 (91%)

Southeastern Plains: 227 of 254 (89%)

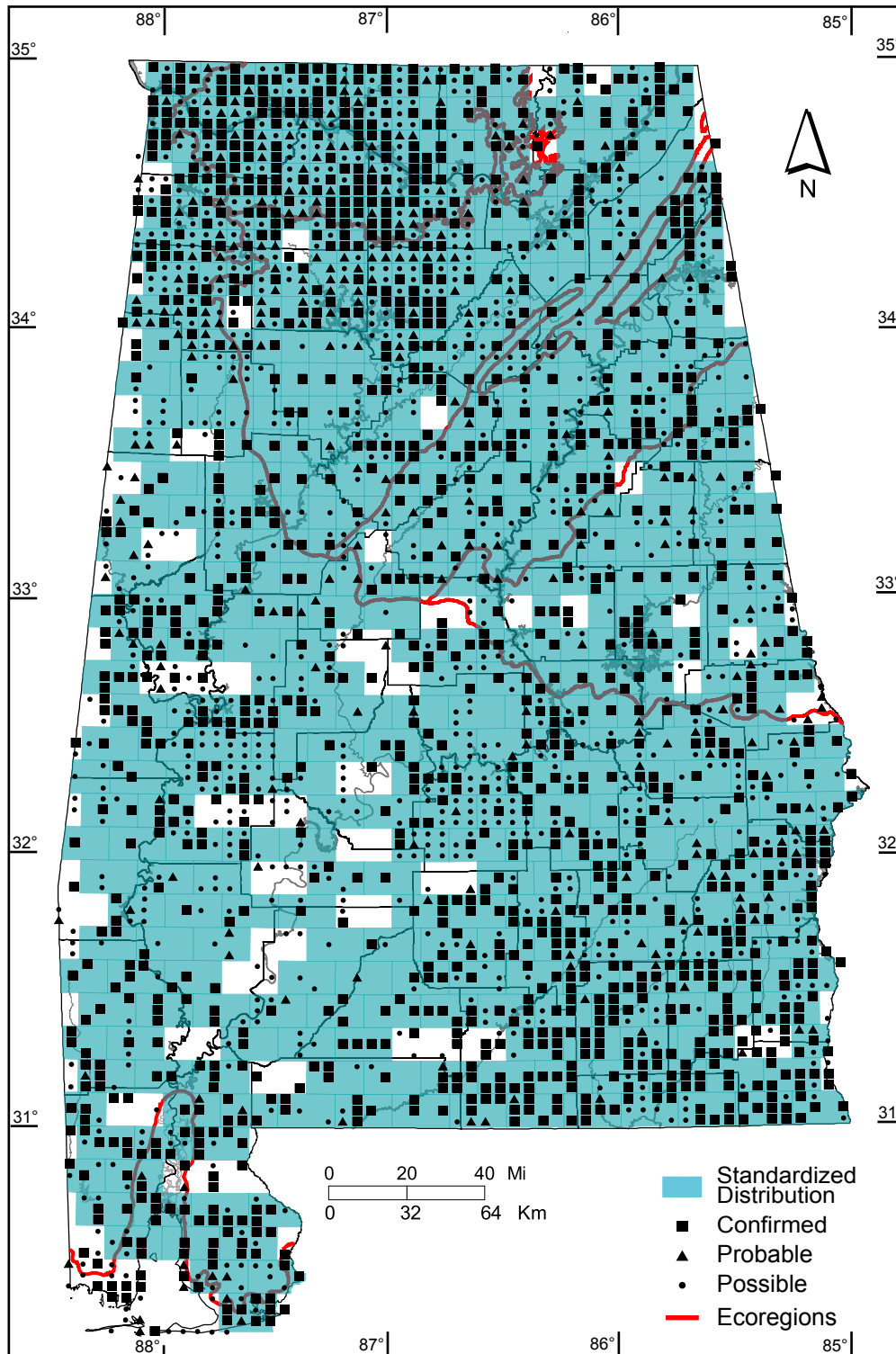
Southern Coastal Plain: 6 of 7 (86%)

Number of Blocks with Breeding Evidence

Total: 2440 of 5087 (48%)

Confirmed: 1276 of 5087 (25%)

Safe Dates: May 1 - June 30



©Alabama Breeding Bird Atlas
All Rights Reserved