

Rock Pigeon (*Columba livia*)

Number of Priority Blocks with Breeding Evidence

Total: 206 of 585 (35%)

Confirmed: 32 (16%)

Probable: 60 (29%)

Possible: 114 (55%)

Number of Priority Blocks in Ecoregions with Breeding Evidence

Interior Plateau: 40 of 52 (77%)

Southwestern Appalachians: 56 of 124 (45%)

Ridge and Valley: 34 of 72 (47%)

Piedmont: 16 of 76 (21%)

Southeastern Plains: 55 of 254 (22%)

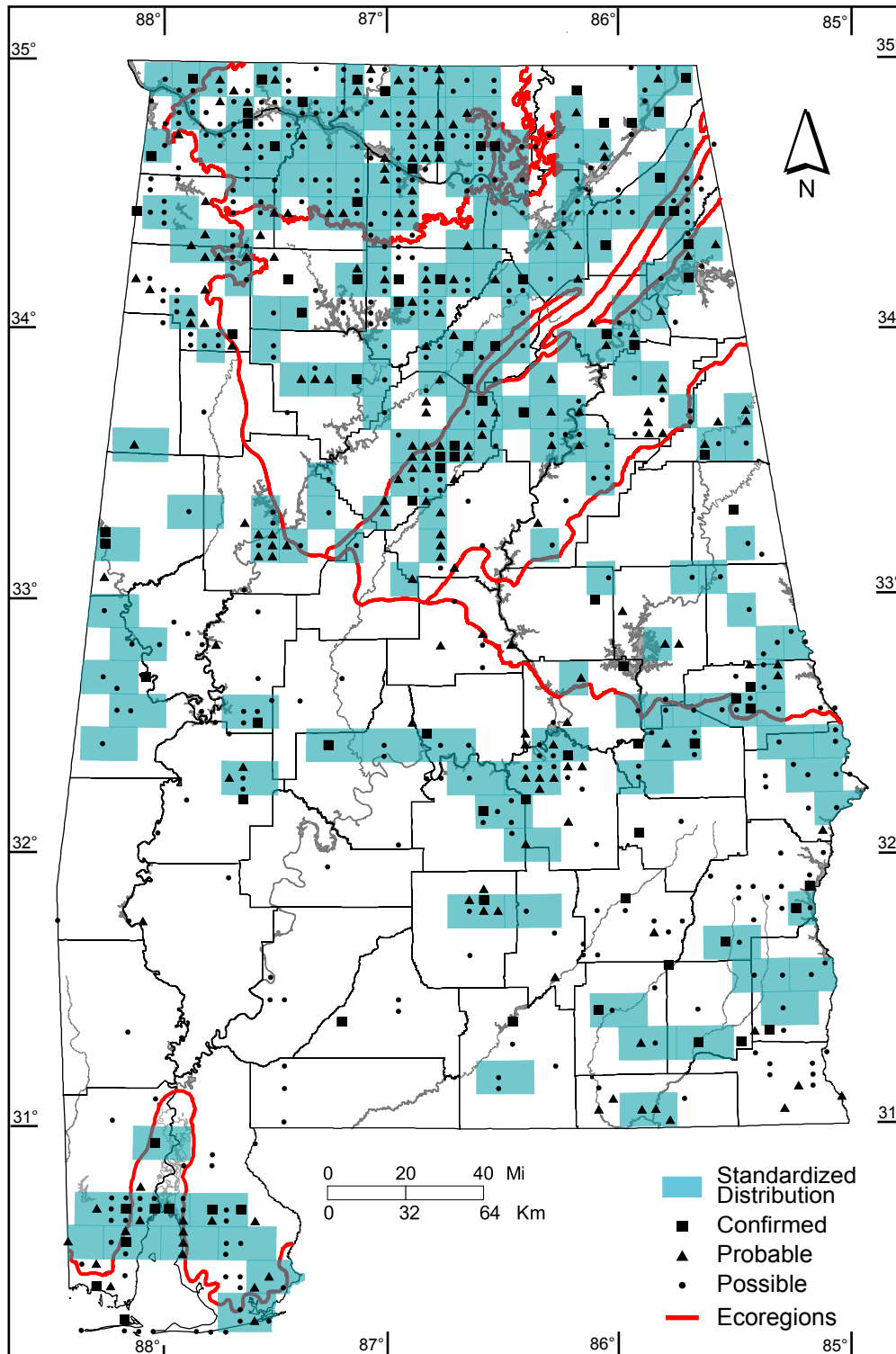
Southern Coastal Plain: 5 of 7 (71%)

Number of Blocks with Breeding Evidence

Total: 724 of 5087 (14%)

Confirmed: 88 of 5087 (2%)

Safe Dates: January 1 - December 31



©Alabama Breeding Bird Atlas
All Rights Reserved

Eurasian Collared-Dove (*Streptopelia decaocto*)

Number of Priority Blocks with Breeding Evidence

Total: 222 of 585 (38%)

Confirmed: 17 (8%)

Probable: 85 (38%)

Possible: 120 (54%)

Number of Priority Blocks in Ecoregions with Breeding Evidence

Interior Plateau: 23 of 52 (44%)

Southwestern Appalachians: 29 of 124 (23%)

Ridge and Valley: 21 of 72 (29%)

Piedmont: 15 of 76 (20%)

Southeastern Plains: 128 of 254 (50%)

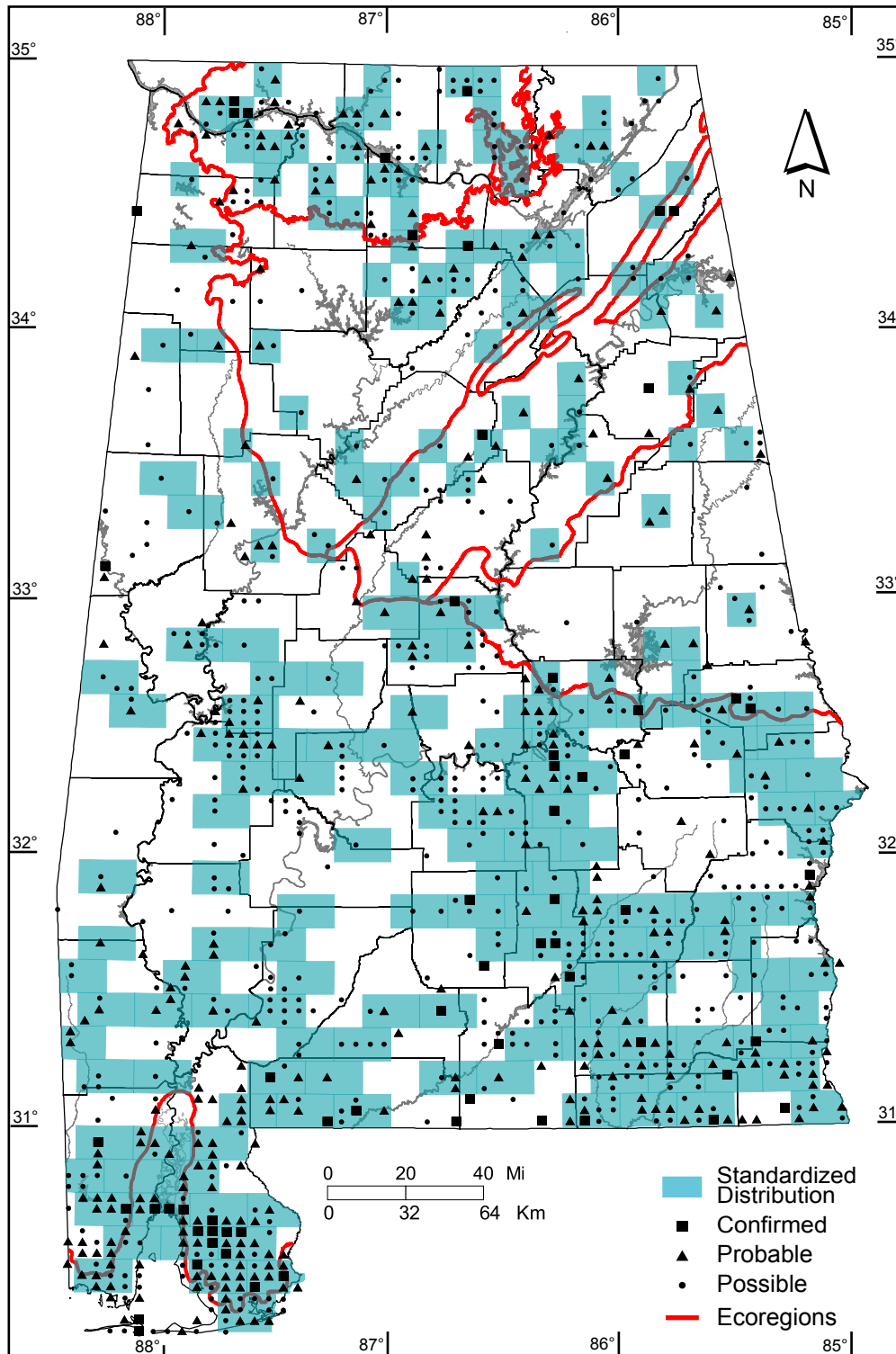
Southern Coastal Plain: 6 of 7 (86%)

Number of Blocks with Breeding Evidence

Total: 930 of 5087 (18%)

Confirmed: 62 of 5087 (1%)

Safe Dates: March 1 - August 31



©Alabama Breeding Bird Atlas
All Rights Reserved

White-winged Dove (*Zenaida asiatica*)

Number of Priority Blocks with Breeding Evidence

Total: 1 of 585 (<1%)

Confirmed: 0 (0%)

Probable: 1 (100%)

Possible: 0 (0%)

Number of Priority Blocks in Ecoregions with Breeding Evidence

Interior Plateau: 0 of 52 (0%)

Southwestern Appalachians: 0 of 124 (0%)

Ridge and Valley: 0 of 72 (0%)

Piedmont: 0 of 76 (0%)

Southeastern Plains: 0 of 254 (0%)

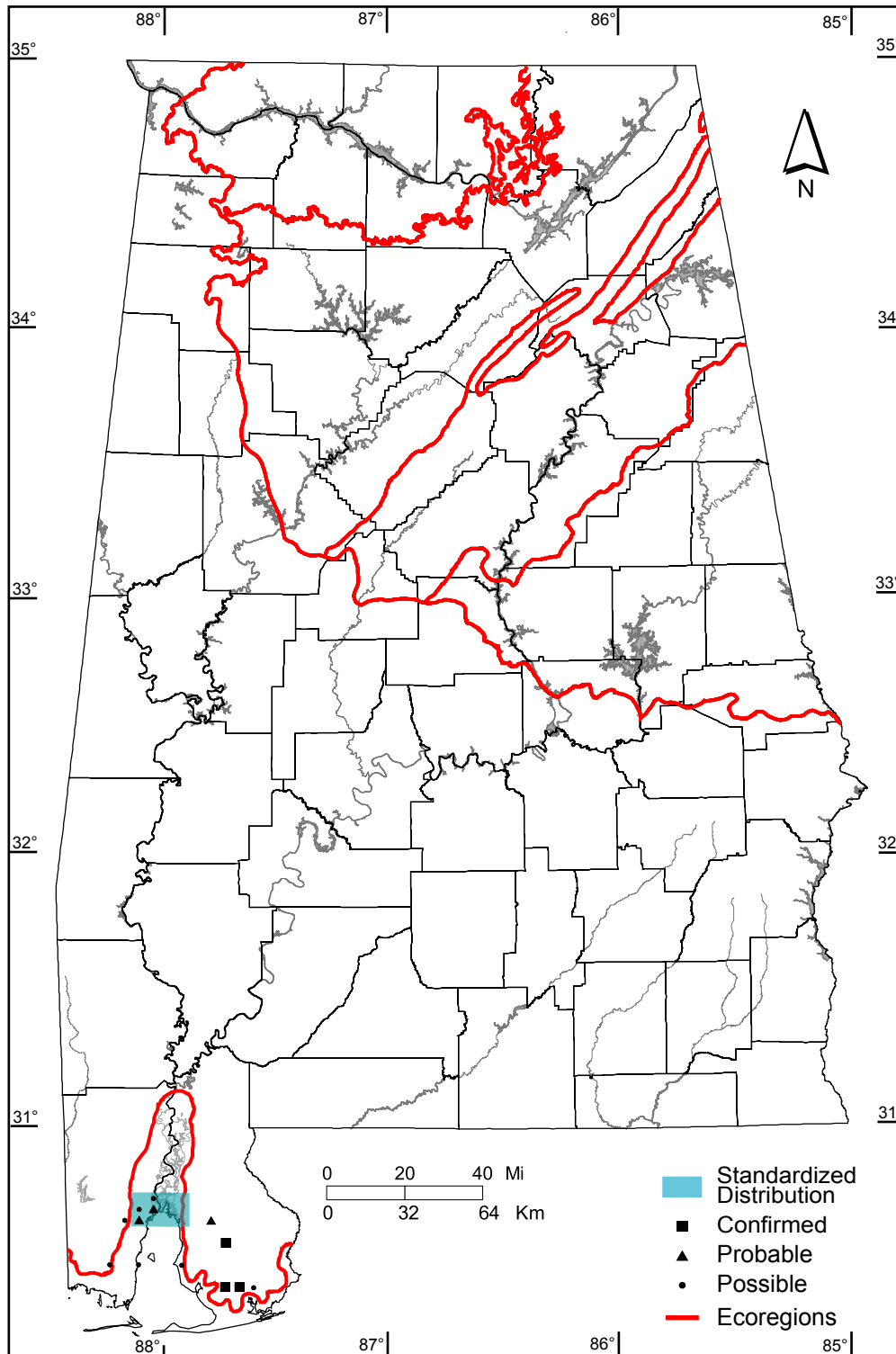
Southern Coastal Plain: 1 of 7 (14%)

Number of Blocks with Breeding Evidence

Total: 13 of 5087 (<1%)

Confirmed: 3 of 5087 (<1%)

Safe Dates: none used



©Alabama Breeding Bird Atlas
All Rights Reserved

Mourning Dove (*Zenaida macroura*)

Number of Priority Blocks with Breeding Evidence

Total: 584 of 585 (99%)

Confirmed: 136 (23%)

Probable: 373 (64%)

Possible: 75 (13%)

Number of Priority Blocks in Ecoregions with Breeding Evidence

Interior Plateau: 52 of 52 (100%)

Southwestern Appalachians: 124 of 124 (100%)

Ridge and Valley: 72 of 72 (100%)

Piedmont: 76 of 76 (100%)

Southeastern Plains: 253 of 254 (99%)

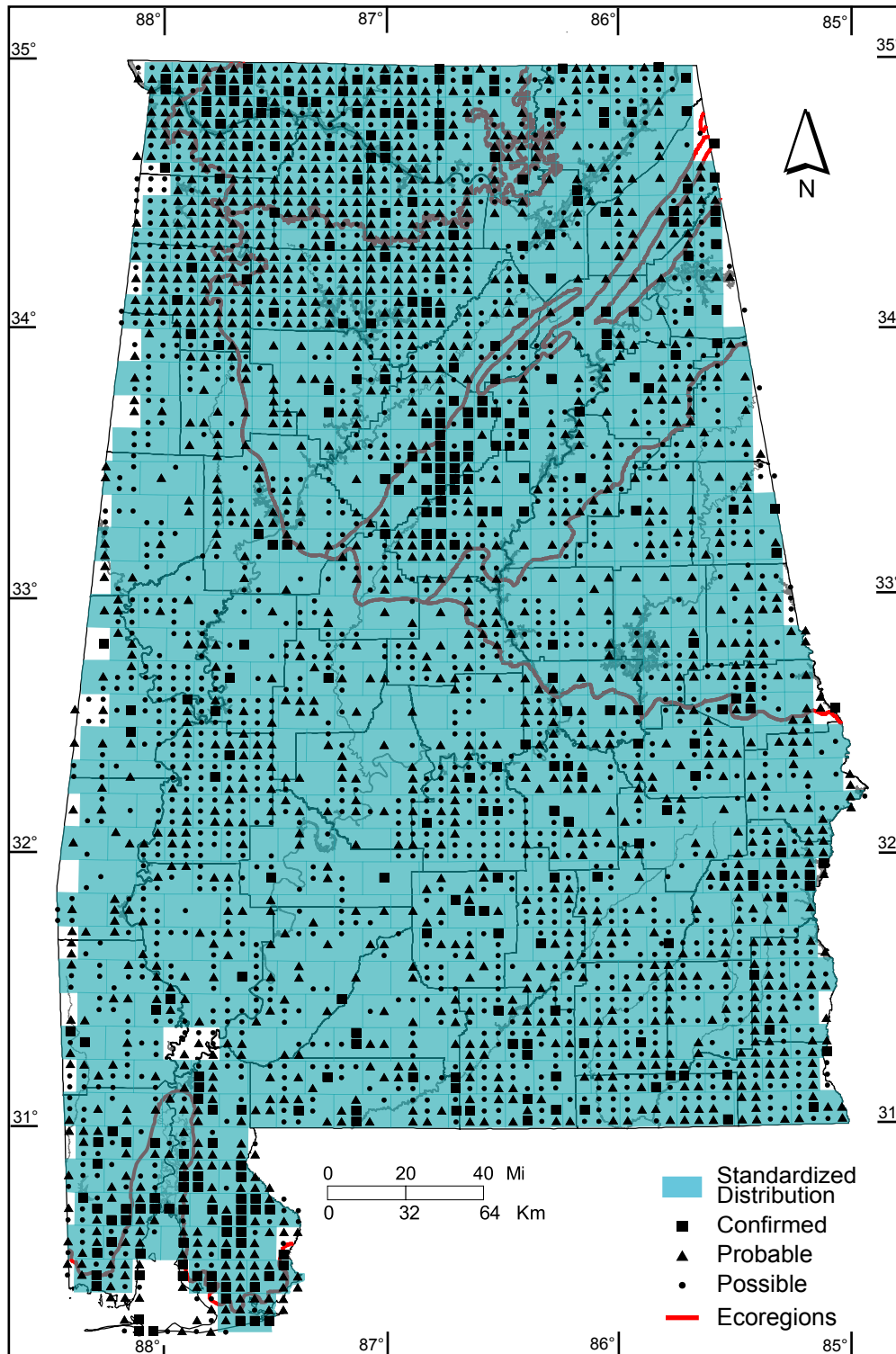
Southern Coastal Plain: 7 of 7 (100%)

Number of Blocks with Breeding Evidence

Total: 3071 of 5087 (60%)

Confirmed: 326 of 5087 (6%)

Safe Dates: March 1 - August 31



©Alabama Breeding Bird Atlas
All Rights Reserved

Common Ground-Dove (*Columbina passerina*)

Number of Priority Blocks with Breeding Evidence

Total: 94 of 585 (16%)

Confirmed: 3 (3%)

Probable: 45 (48%)

Possible: 46 (49%)

Number of Priority Blocks in Ecoregions with Breeding Evidence

Interior Plateau: 0 of 52 (0%)

Southwestern Appalachians: 0 of 124 (0%)

Ridge and Valley: 1 of 72 (1%)

Piedmont: 8 of 76 (11%)

Southeastern Plains: 82 of 254 (32%)

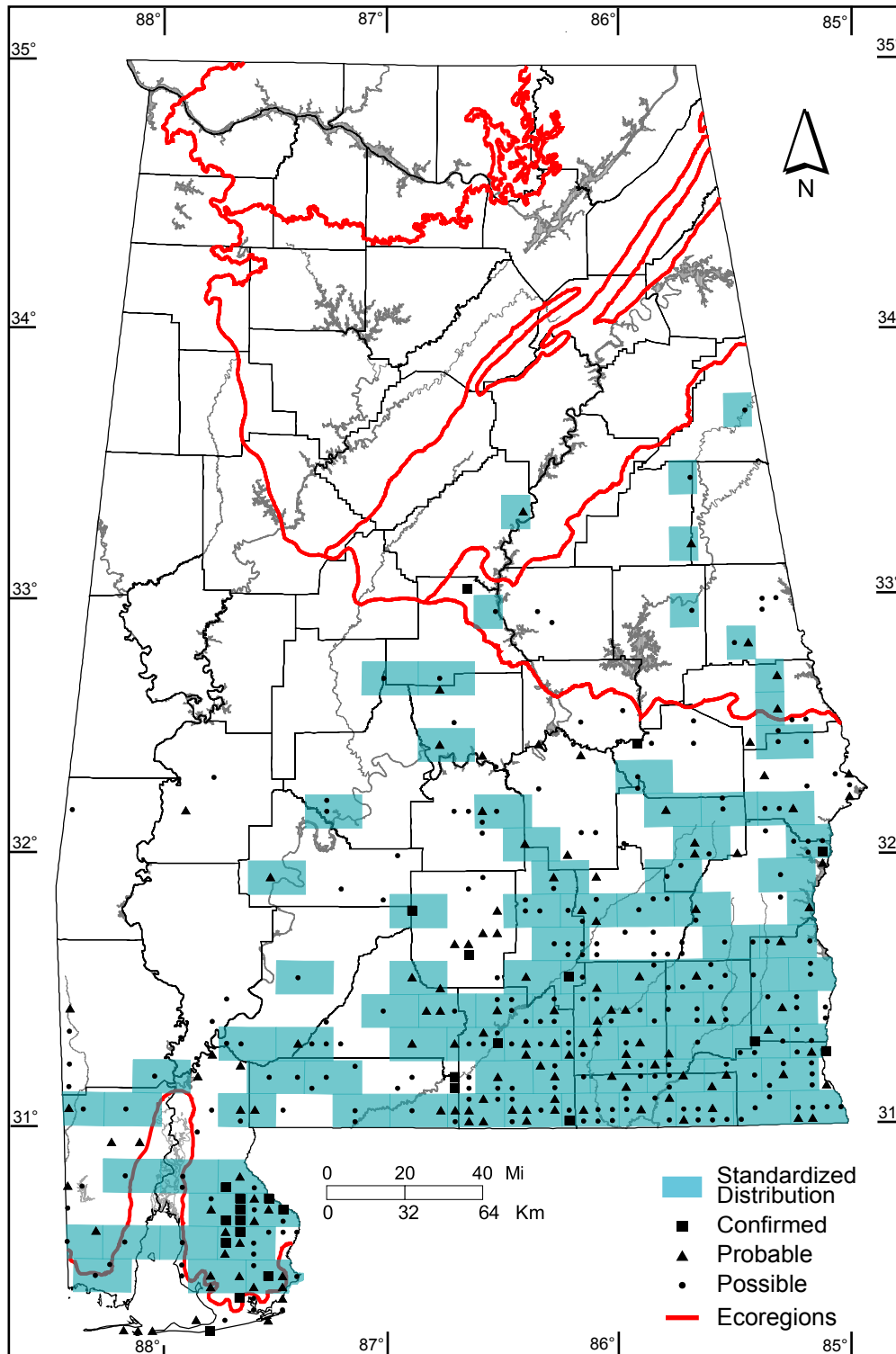
Southern Coastal Plain: 3 of 7 (43%)

Number of Blocks with Breeding Evidence

Total: 397 of 5087 (8%)

Confirmed: 24 of 5087 (<1%)

Safe Dates: March 1 - August 31



©Alabama Breeding Bird Atlas
All Rights Reserved

Yellow-billed Cuckoo (*Coccyzus americanus*)

Number of Priority Blocks with Breeding Evidence

Total: 548 of 585 (94%)

Confirmed: 64 (12%)

Probable: 177 (32%)

Possible: 307 (56%)

Number of Priority Blocks in Ecoregions with Breeding Evidence

Interior Plateau: 51 of 52 (98%)

Southwestern Appalachians: 116 of 124 (94%)

Ridge and Valley: 65 of 72 (90%)

Piedmont: 73 of 76 (96%)

Southeastern Plains: 238 of 254 (94%)

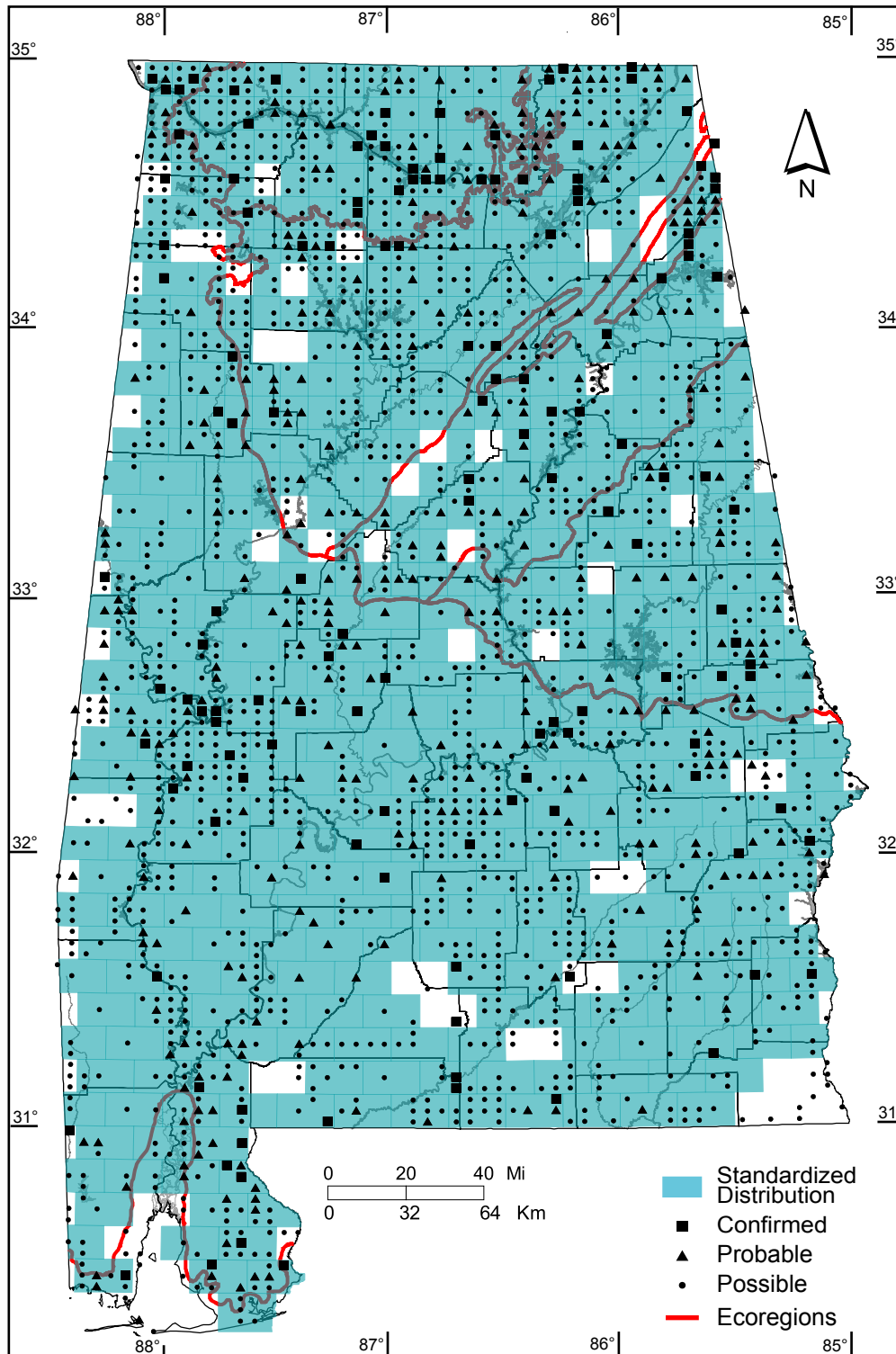
Southern Coastal Plain: 5 of 7 (71%)

Number of Blocks with Breeding Evidence

Total: 1998 of 5087 (39%)

Confirmed: 140 of 5087 (3%)

Safe Dates: June 1 - July 31



©Alabama Breeding Bird Atlas
All Rights Reserved

Black-billed Cuckoo (*Coccyzus erythrophthalmus*)

Number of Priority Blocks with Breeding Evidence

Total: 1 of 585 (<1%)

Confirmed: 0 (0%)

Probable: 0 (0%)

Possible: 1 (100%)

Number of Priority Blocks in Ecoregions with Breeding Evidence

Interior Plateau: 0 of 52 (0%)

Southwestern Appalachians: 1 of 124 (1%)

Ridge and Valley: 0 of 72 (0%)

Piedmont: 0 of 76 (0%)

Southeastern Plains: 0 of 254 (0%)

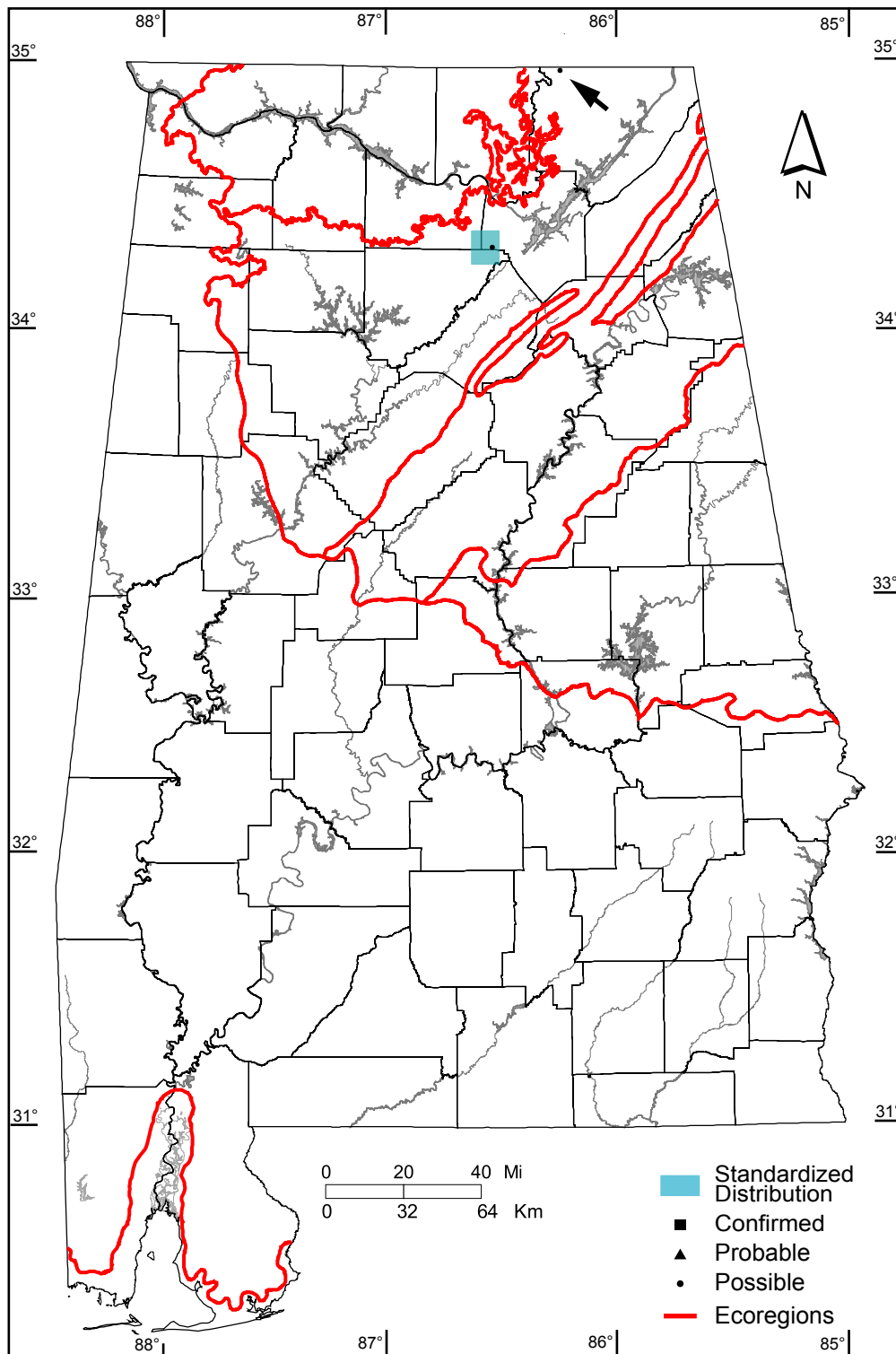
Southern Coastal Plain: 0 of 7 (0%)

Number of Blocks with Breeding Evidence

Total: 2 of 5087 (<1%)

Confirmed: 0 of 5087 (0%)

Safe Dates: June 10 - July 20



©Alabama Breeding Bird Atlas
All Rights Reserved

Barn Owl (*Tyto alba*)

Number of Priority Blocks with Breeding Evidence

Total: 40 of 585 (7%)

Confirmed: 22 (55%)

Probable: 6 (15%)

Possible: 12 (30%)

Number of Priority Blocks in Ecoregions with Breeding Evidence

Interior Plateau: 7 of 52 (13%)

Southwestern Appalachians: 10 of 124 (8%)

Ridge and Valley: 4 of 72 (6%)

Piedmont: 1 of 76 (1%)

Southeastern Plains: 17 of 254 (7%)

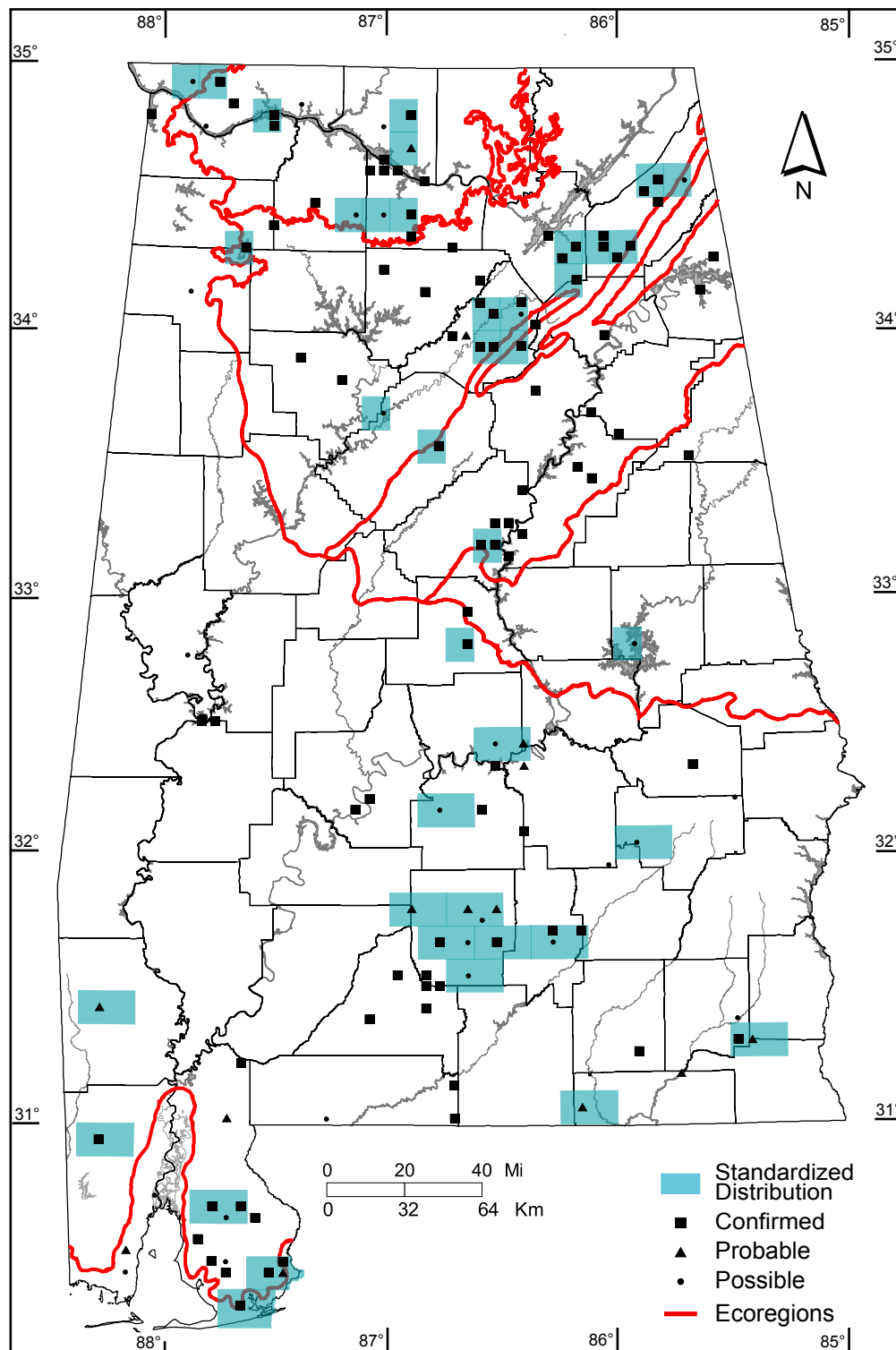
Southern Coastal Plain: 1 of 7 (14%)

Number of Blocks with Breeding Evidence

Total: 134 of 5087 (3%)

Confirmed: 93 of 5087 (2%)

Safe Dates: May 1 - August 15



©Alabama Breeding Bird Atlas
All Rights Reserved

Eastern Screech-Owl (*Megascops asio*)

Number of Priority Blocks with Breeding Evidence

Total: 326 of 585 (56%)

Confirmed: 14 (4%)

Probable: 63 (19%)

Possible: 249 (77%)

Number of Priority Blocks in Ecoregions with Breeding Evidence

Interior Plateau: 31 of 52 (60%)

Southwestern Appalachians: 70 of 124 (56%)

Ridge and Valley: 27 of 72 (38%)

Piedmont: 29 of 76 (38%)

Southeastern Plains: 164 of 254 (65%)

Southern Coastal Plain: 5 of 7 (71%)

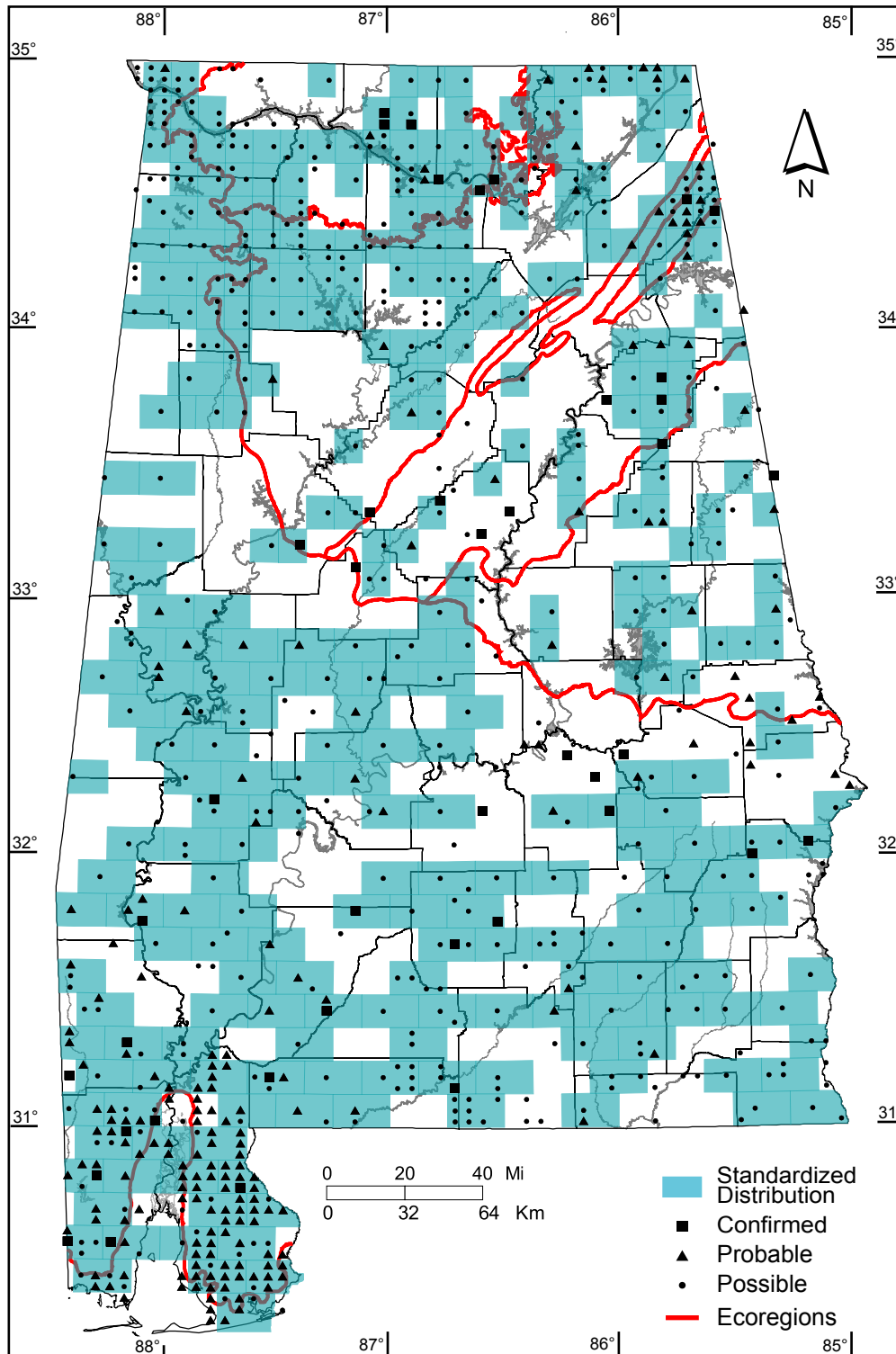
Number of Blocks with Breeding Evidence

Total: 740 of 5087 (15%)

Confirmed: 42 of 5087 (1%)

Safe Dates: March 1 - July 5

The Eastern Screech-Owl was detected in 87% of the 84 owl sample blocks. Physiographically, the species was detected in 100% of the Southeastern Plain blocks and 81% of the blocks in the upland regions. See Methods page.



©Alabama Breeding Bird Atlas
All Rights Reserved

Great Horned Owl (*Bubo virginianus*)

Number of Priority Blocks with Breeding Evidence

Total: 287 of 585 (49%)

Confirmed: 20 (7%)

Probable: 87 (30%)

Possible: 180 (63%)

Number of Priority Blocks in Ecoregions with Breeding Evidence

Interior Plateau: 29 of 52 (56%)

Southwestern Appalachians: 59 of 124 (48%)

Ridge and Valley: 20 of 72 (28%)

Piedmont: 20 of 76 (26%)

Southeastern Plains: 152 of 254 (60%)

Southern Coastal Plain: 7 of 7 (100%)

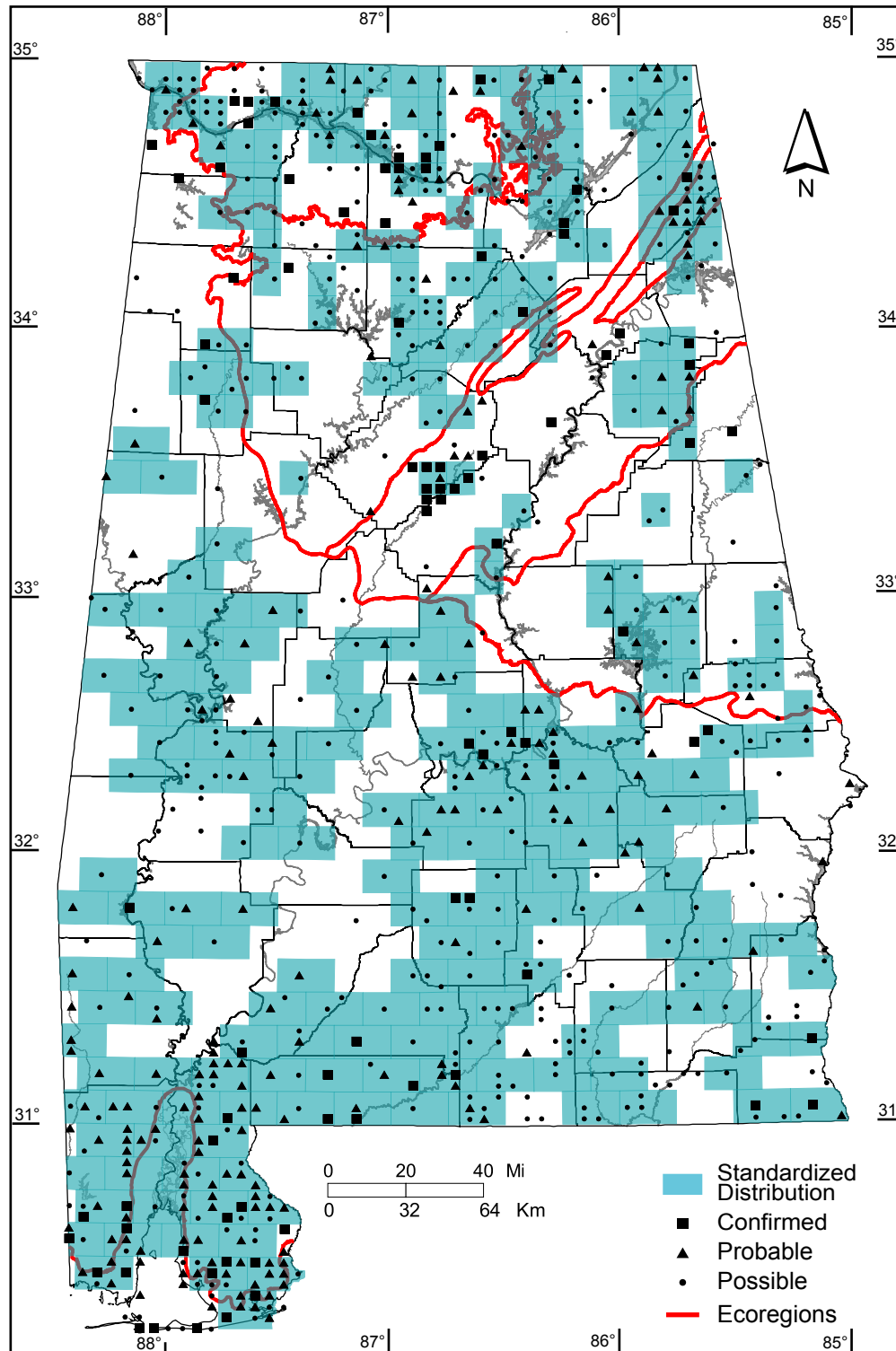
Number of Blocks with Breeding Evidence

Total: 743 of 5087 (15%)

Confirmed: 93 of 5087 (2%)

Safe Dates: December 5 - July 15

The Great Horned Owl was detected in 82% of the 84 owl sample blocks. Physiographically, the species was detected in 93% of the Southeastern Plain blocks and 77% of the blocks in the upland regions. See Methods page



©Alabama Breeding Bird Atlas
All Rights Reserved

Barred Owl (*Strix varia*)

Number of Priority Blocks with Breeding Evidence

Total: 400 of 585 (68%)

Confirmed: 32 (8%)

Probable: 153 (38%)

Possible: 215 (54%)

Number of Priority Blocks in Ecoregions with Breeding Evidence

Interior Plateau: 41 of 52 (79%)

Southwestern Appalachians: 83 of 124 (67%)

Ridge and Valley: 44 of 72 (61%)

Piedmont: 38 of 76 (50%)

Southeastern Plains: 188 of 254 (74%)

Southern Coastal Plain: 6 of 7 (86%)

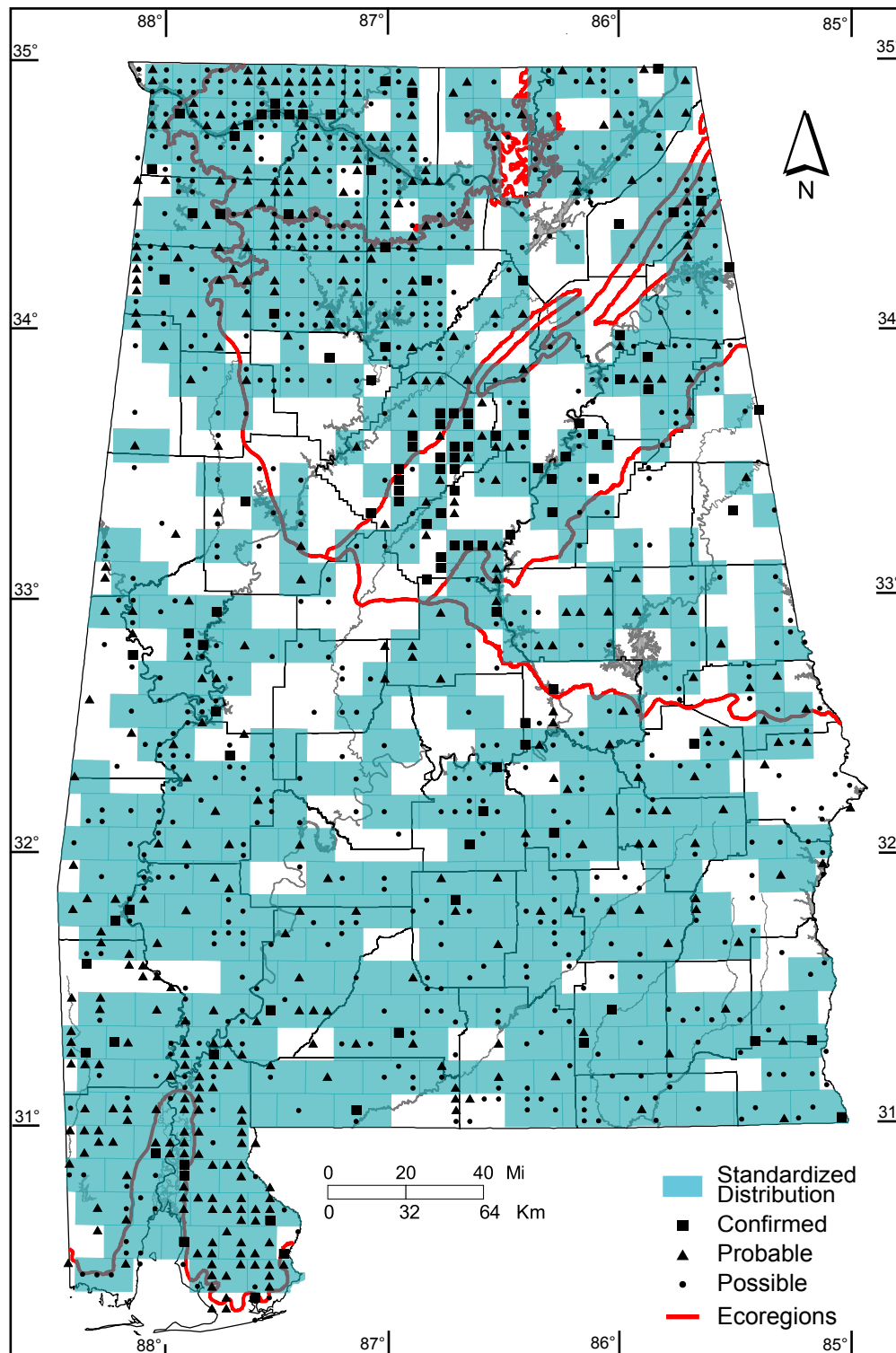
Number of Blocks with Breeding Evidence

Total: 1145 of 5087 (23%)

Confirmed: 112 of 5087 (2%)

Safe Dates: February 1 - July 15

The Barred Owl was detected in 87% of the 84 owl sample blocks. Physiographically, the species was detected in 100% of the Southeastern Plain blocks and 81% of the blocks in the upland regions. See Methods page



©Alabama Breeding Bird Atlas
All Rights Reserved

Common Nighthawk (*Chordeiles minor*)

Number of Priority Blocks with Breeding Evidence

Total: 85 of 585 (15%)

Confirmed: 4 (5%)

Probable: 35 (41%)

Possible: 46 (54%)

Number of Priority Blocks in Ecoregions with Breeding Evidence

Interior Plateau: 9 of 52 (17%)

Southwestern Appalachians: 7 of 124 (6%)

Ridge and Valley: 9 of 72 (13%)

Piedmont: 4 of 76 (5%)

Southeastern Plains: 50 of 254 (20%)

Southern Coastal Plain: 6 of 7 (86%)

Number of Blocks with Breeding Evidence

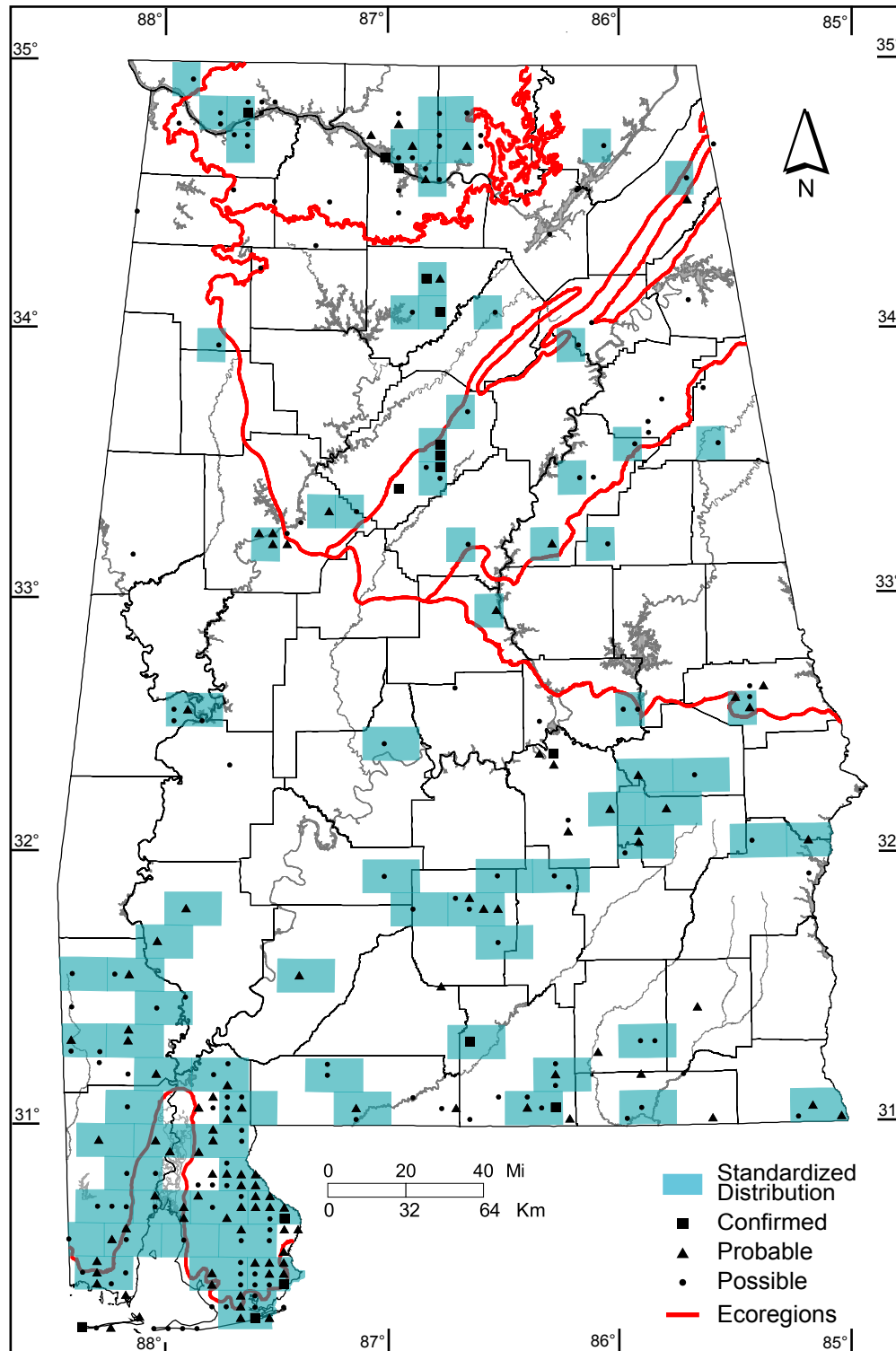
Total: 274 of 5087 (5%)

Confirmed: 16 of 5087 (<1%)

Number of Blocks with Nonbreeding Records

Observed: 0 of 5087 (0%)

Safe Dates: May 25 - July 15



©Alabama Breeding Bird Atlas
All Rights Reserved

Chuck-will's-widow (*Caprimulgus carolinensis*)

Number of Priority Blocks with Breeding Evidence

Total: 505 of 585 (86%)

Confirmed: 7 (1%)

Probable: 203 (40%)

Possible: 295 (59%)

Number of Priority Blocks in Ecoregions with Breeding Evidence

Interior Plateau: 49 of 52 (94%)

Southwestern Appalachians: 106 of 124 (85%)

Ridge and Valley: 49 of 72 (68%)

Piedmont: 67 of 76 (88%)

Southeastern Plains: 229 of 254 (90%)

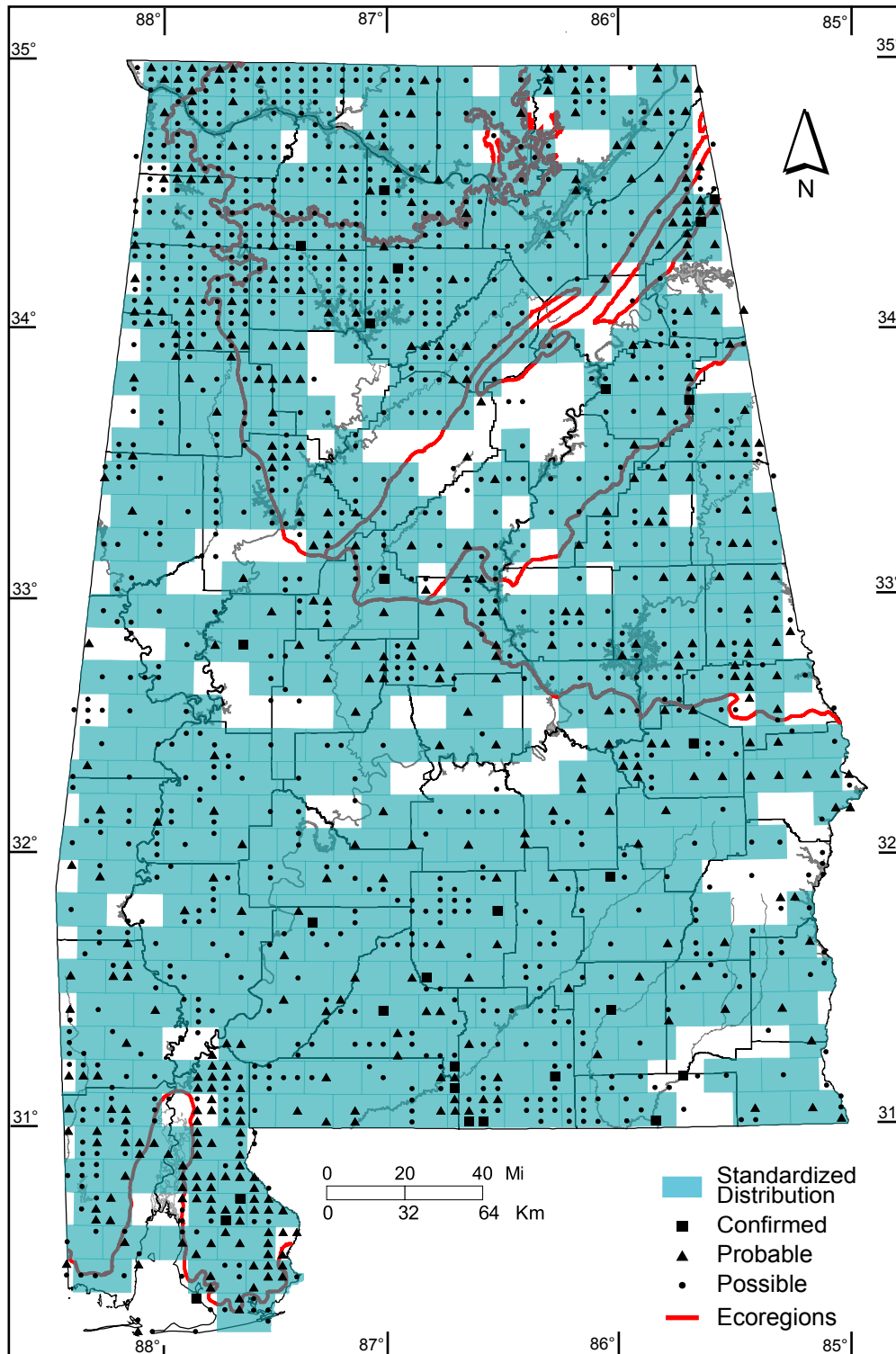
Southern Coastal Plain: 5 of 7 (71%)

Number of Blocks with Breeding Evidence

Total: 1433 of 5087 (28%)

Confirmed: 27 of 5087 (1%)

Safe Dates: May 1 - July 31



©Alabama Breeding Bird Atlas
All Rights Reserved

Whip-poor-will (*Caprimulgus vociferus*)

Number of Priority Blocks with Breeding Evidence

Total: 159 of 585 (27%)

Confirmed: 0 (0%)

Probable: 41 (26%)

Possible: 118 (74%)

Number of Priority Blocks in Ecoregions with Breeding Evidence

Interior Plateau: 5 of 52 (10%)

Southwestern Appalachians: 59 of 124 (48%)

Ridge and Valley: 30 of 72 (42%)

Piedmont: 38 of 76 (50%)

Southeastern Plains: 27 of 254 (11%)

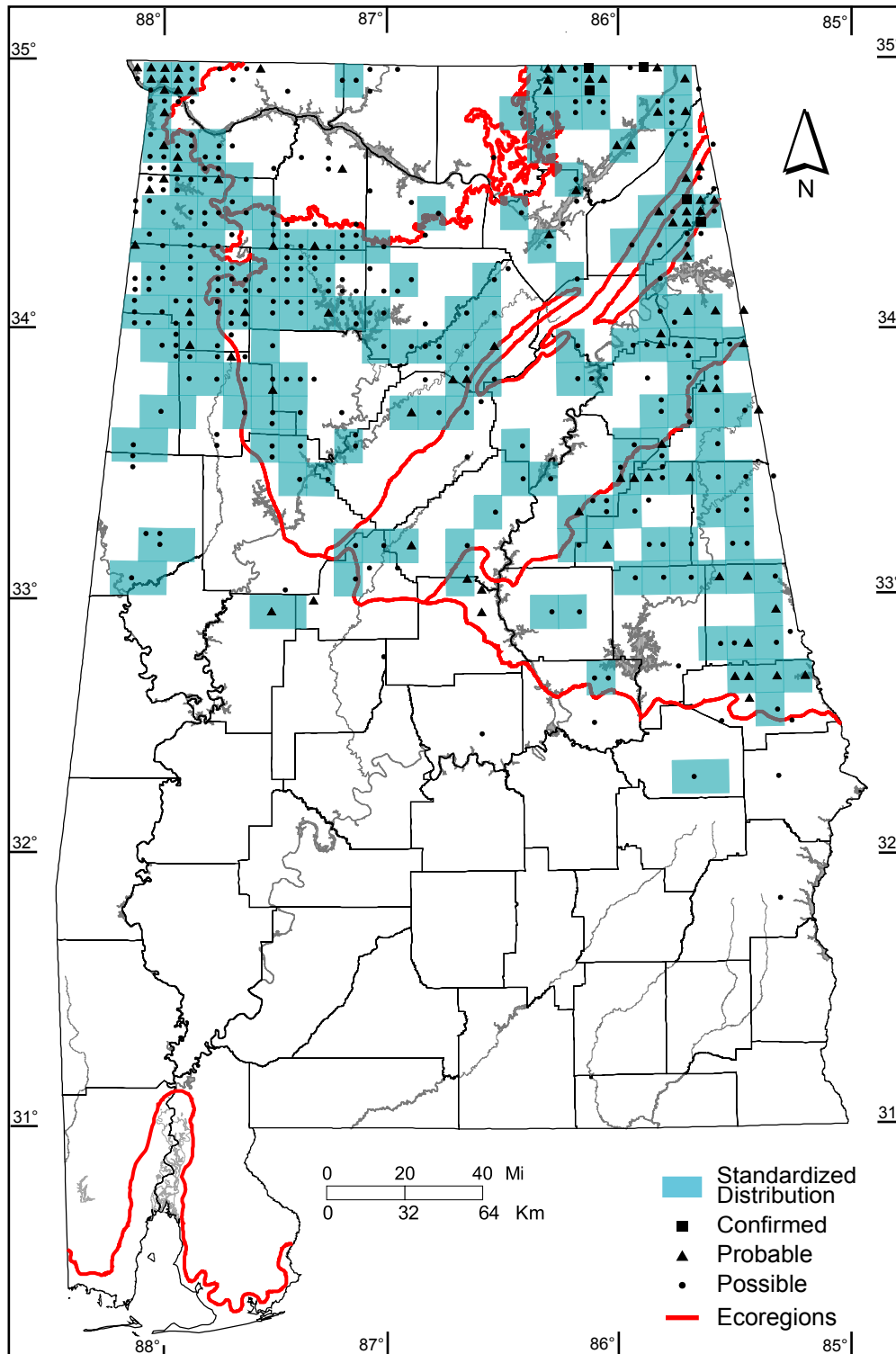
Southern Coastal Plain: 0 of 7 (0%)

Number of Blocks with Breeding Evidence

Total: 408 of 5087 (8%)

Confirmed: 5 of 5087 (<1%)

Safe Dates: May 10 - July 31



©Alabama Breeding Bird Atlas
All Rights Reserved

Chimney Swift (*Chaetura pelagica*)

Number of Priority Blocks with Breeding Evidence

Total: 558 of 585 (95%)

Confirmed: 58 (11%)

Probable: 191 (34%)

Possible: 309 (55%)

Number of Priority Blocks in Ecoregions with Breeding Evidence

Interior Plateau: 51 of 52 (98%)

Southwestern Appalachians: 118 of 124 (95%)

Ridge and Valley: 70 of 72 (97%)

Piedmont: 71 of 76 (93%)

Southeastern Plains: 241 of 254 (95%)

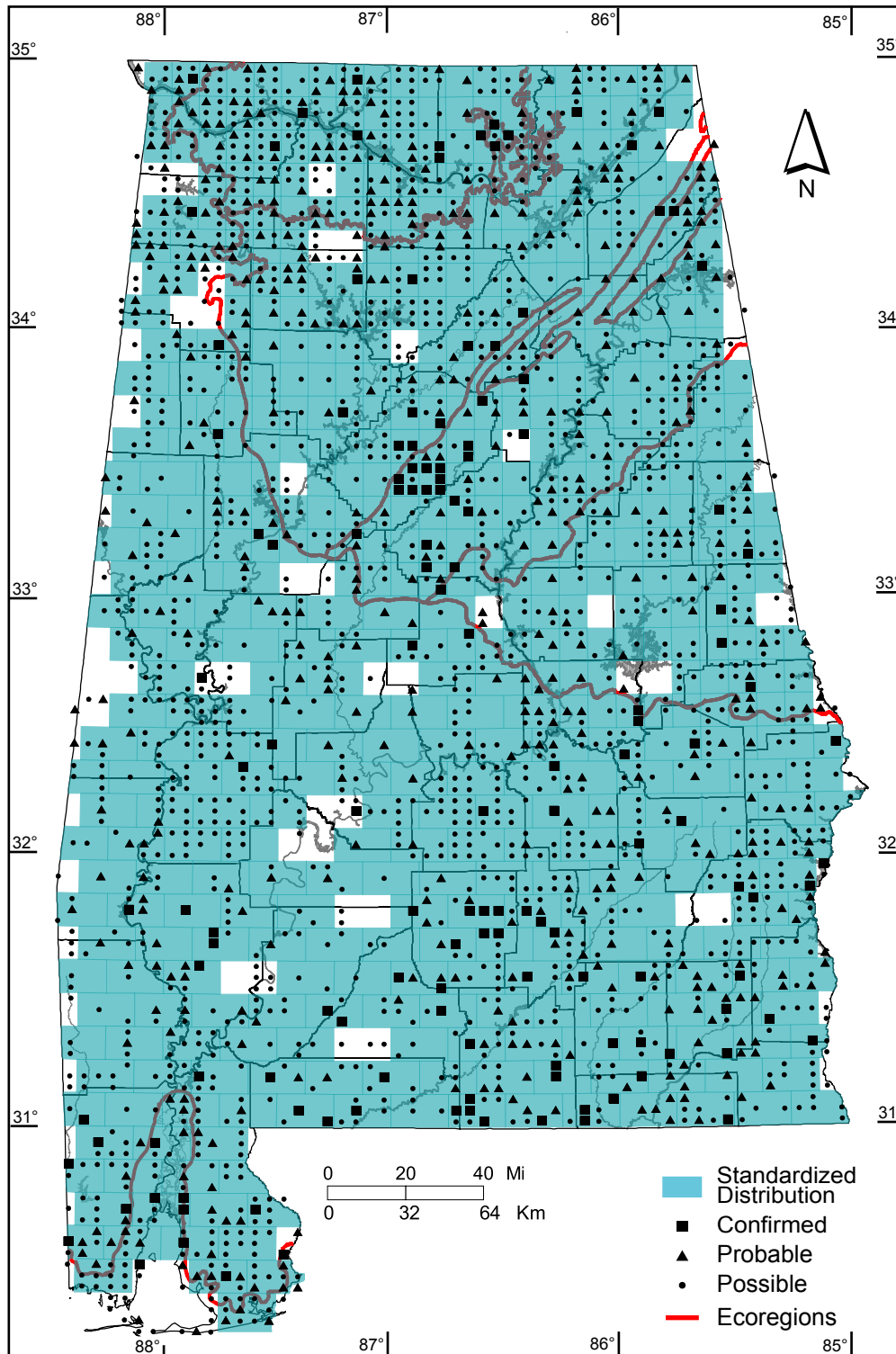
Southern Coastal Plain: 7 of 7 (100%)

Number of Blocks with Breeding Evidence

Total: 2135 of 5087 (42%)

Confirmed: 142 of 5087 (3%)

Safe Dates: May 15 - July 15



©Alabama Breeding Bird Atlas
All Rights Reserved

Ruby-throated Hummingbird (*Archilochus colubris*)

Number of Priority Blocks with Breeding Evidence

Total: 490 of 585 (84%)

Confirmed: 12 (2%)

Probable: 156 (32%)

Possible: 322 (66%)

Number of Priority Blocks in Ecoregions with Breeding Evidence

Interior Plateau: 44 of 52 (85%)

Southwestern Appalachians: 103 of 124 (83%)

Ridge and Valley: 62 of 72 (86%)

Piedmont: 65 of 76 (86%)

Southeastern Plains: 210 of 254 (83%)

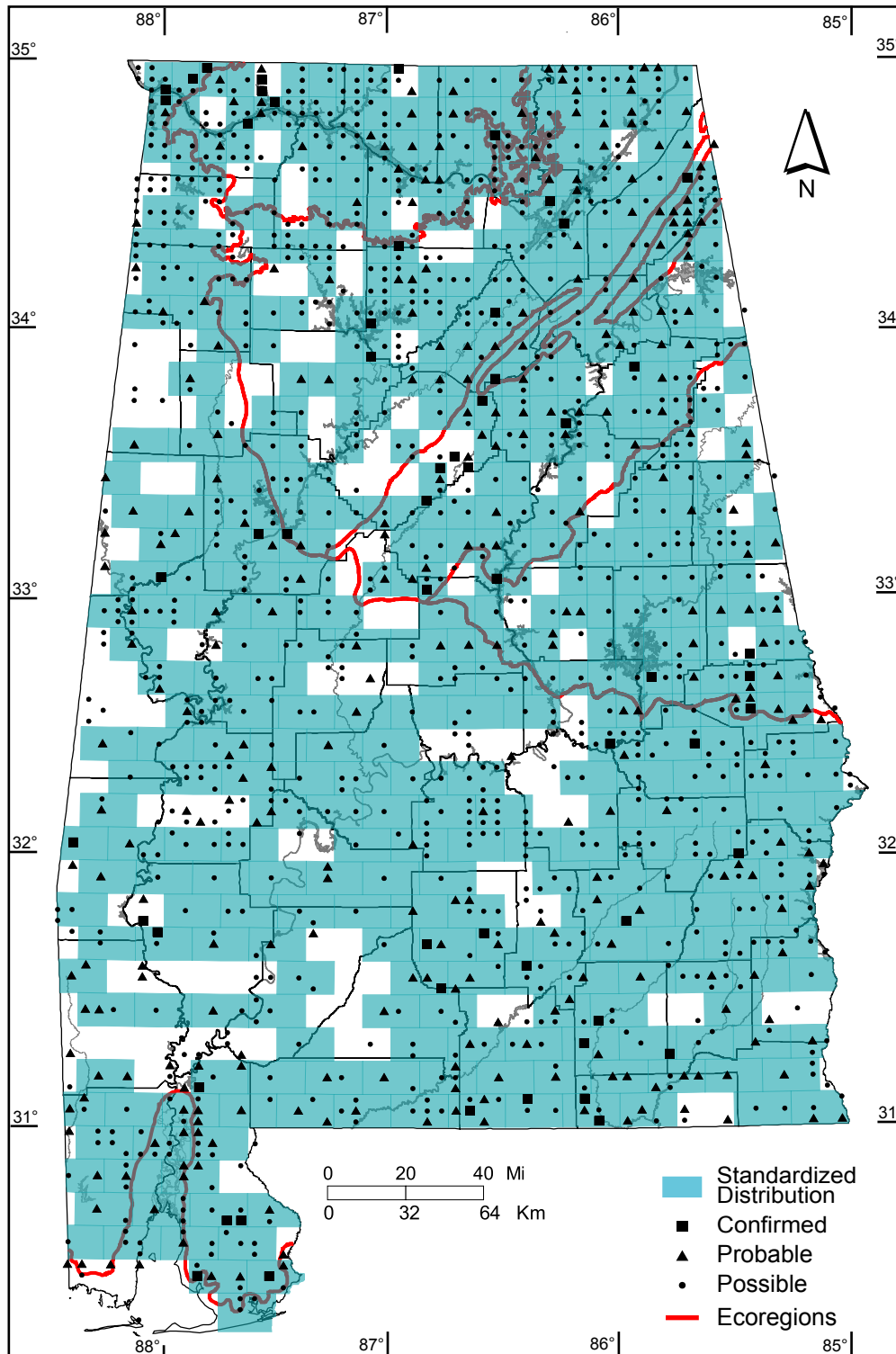
Southern Coastal Plain: 6 of 7 (86%)

Number of Blocks with Breeding Evidence

Total: 1308 of 5087 (26%)

Confirmed: 57 of 5087 (1%)

Safe Dates: May 10 - June 30



©Alabama Breeding Bird Atlas
All Rights Reserved

Belted Kingfisher (*Magaceryle alcyon*)

Number of Priority Blocks with Breeding Evidence

Total: 247 of 585 (42%)

Confirmed: 64 (26%)

Probable: 53 (21%)

Possible: 130 (53%)

Number of Priority Blocks in Ecoregions with Breeding Evidence

Interior Plateau: 28 of 52 (54%)

Southwestern Appalachians: 57 of 124 (46%)

Ridge and Valley: 28 of 72 (39%)

Piedmont: 25 of 76 (33%)

Southeastern Plains: 104 of 254 (41%)

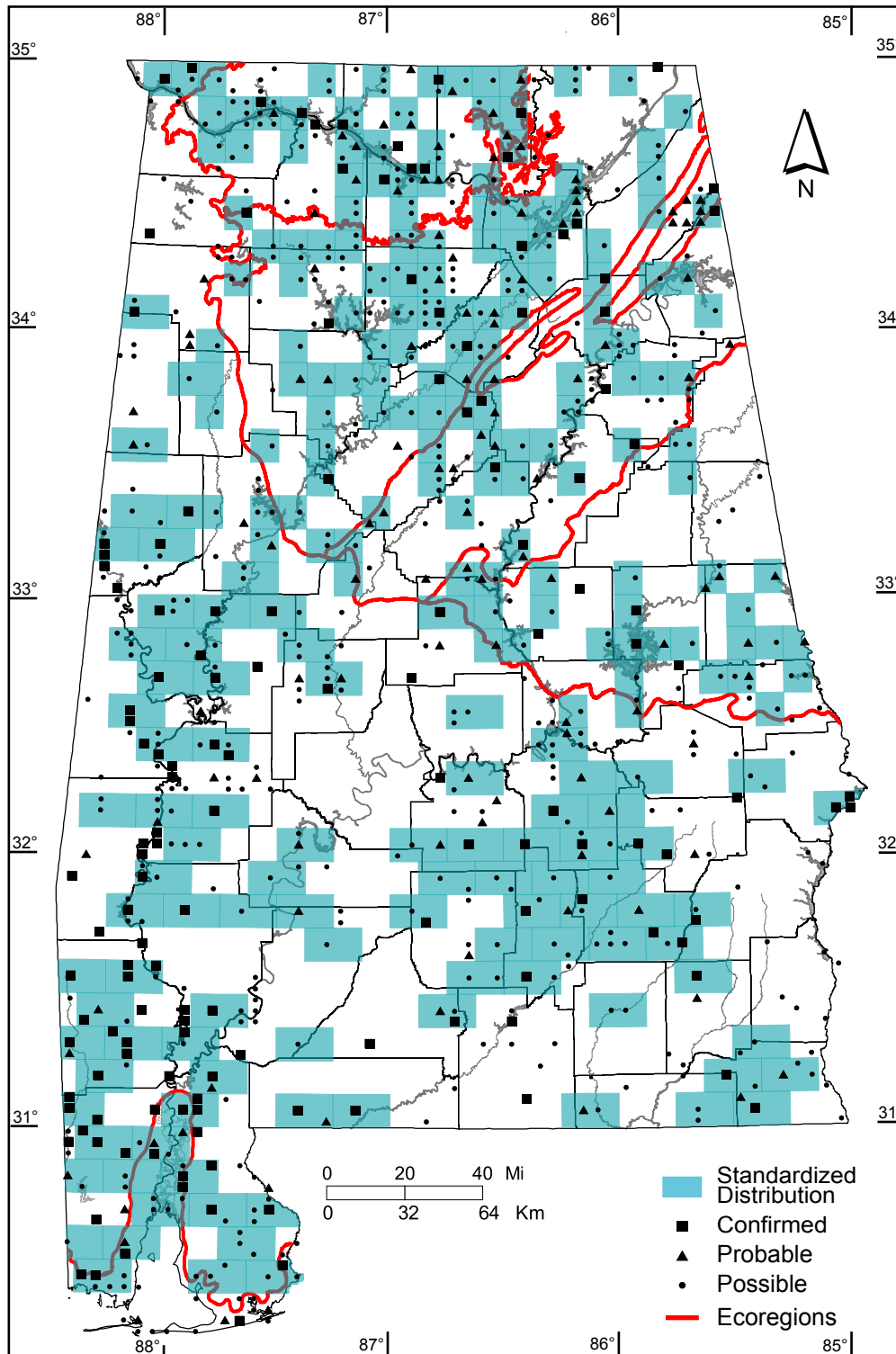
Southern Coastal Plain: 5 of 7 (71%)

Number of Blocks with Breeding Evidence

Total: 752 of 5087 (15%)

Confirmed: 148 of 5087 (3%)

Safe Dates: April 1 - June 10



©Alabama Breeding Bird Atlas
All Rights Reserved

Red-headed Woodpecker (*Melanerpes erythrocephalus*)

Number of Priority Blocks with Breeding Evidence

Total: 387 of 585 (66%)

Confirmed: 97 (25%)

Probable: 99 (26%)

Possible: 191 (49%)

Number of Priority Blocks in Ecoregions with Breeding Evidence

Interior Plateau: 27 of 52 (52%)

Southwestern Appalachians: 75 of 124 (60%)

Ridge and Valley: 50 of 72 (69%)

Piedmont: 46 of 76 (61%)

Southeastern Plains: 184 of 254 (72%)

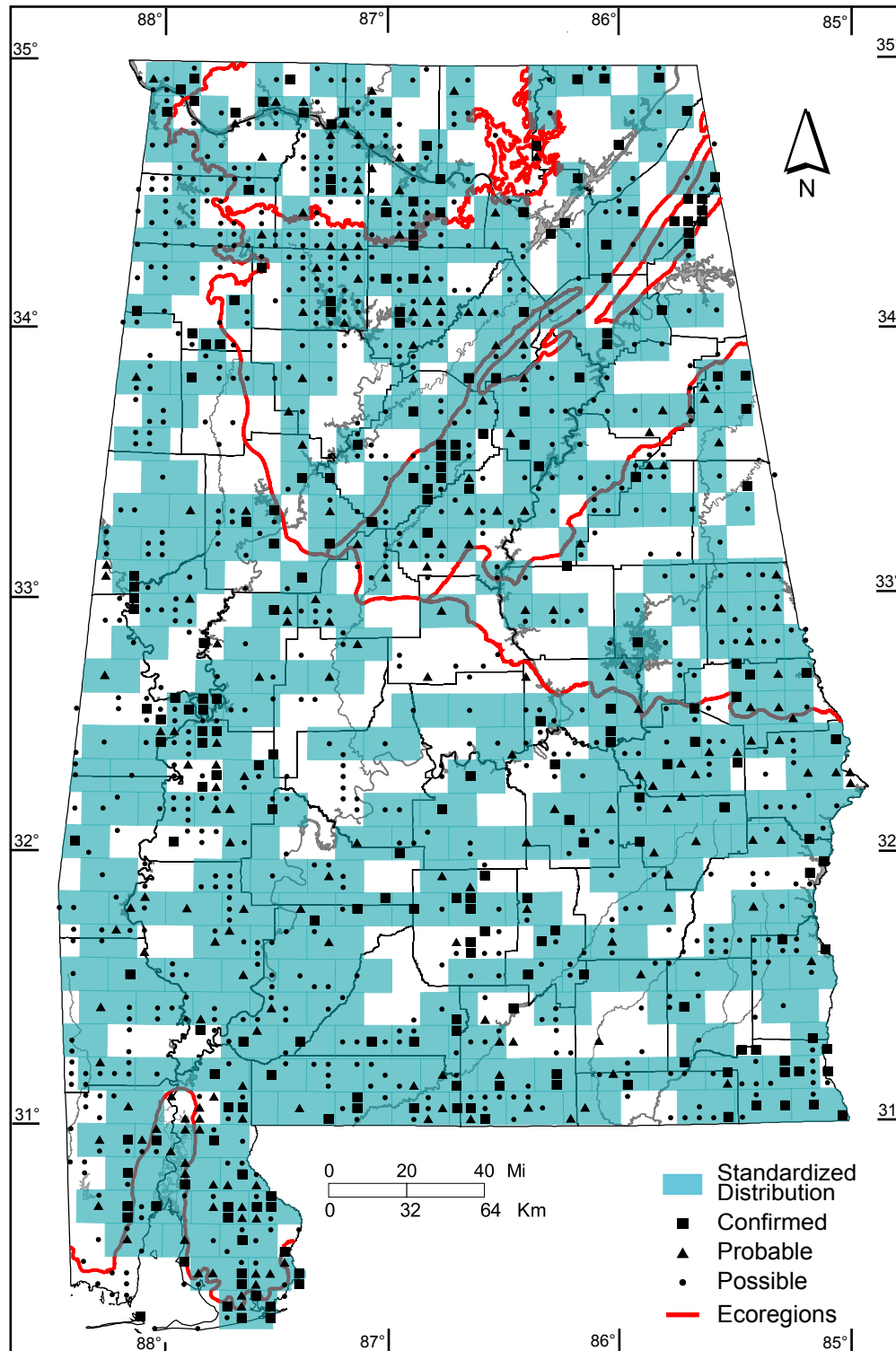
Southern Coastal Plain: 5 of 7 (71%)

Number of Blocks with Breeding Evidence

Total: 1240 of 5087 (24%)

Confirmed: 230 of 5087 (5%)

Safe Dates: May 1 - July 15



©Alabama Breeding Bird Atlas
All Rights Reserved

Red-bellied Woodpecker (*Melanerpes carolinus*)

Number of Priority Blocks with Breeding Evidence

Total: 584 of 585 (99%)

Confirmed: 191 (33%)

Probable: 233 (40%)

Possible: 160 (27%)

Number of Priority Blocks in Ecoregions with Breeding Evidence

Interior Plateau: 52 of 52 (100%)

Southwestern Appalachians: 124 of 124 (100%)

Ridge and Valley: 72 of 72 (100%)

Piedmont: 76 of 76 (100%)

Southeastern Plains: 254 of 254 (100%)

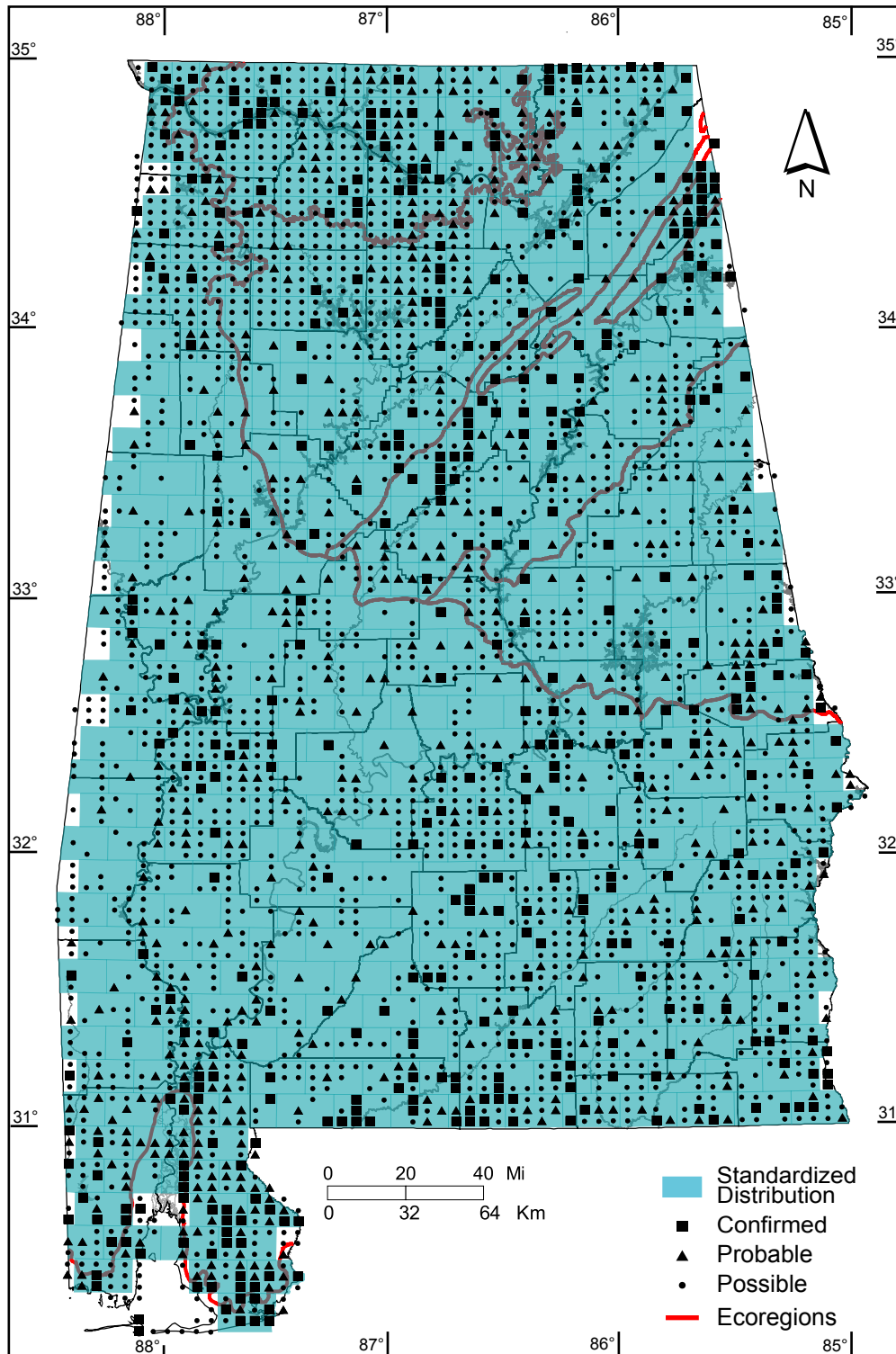
Southern Coastal Plain: 6 of 7 (86%)

Number of Blocks with Breeding Evidence

Total: 2900 of 5087 (57%)

Confirmed: 450 of 5087 (9%)

Safe Dates: April 1 - July 20



©Alabama Breeding Bird Atlas
All Rights Reserved

Downy Woodpecker (*Picoides pubescens*)

Number of Priority Blocks with Breeding Evidence

Total: 579 of 585 (99%)

Confirmed: 88 (15%)

Probable: 185 (32%)

Possible: 306 (53%)

Number of Priority Blocks in Ecoregions with Breeding Evidence

Interior Plateau: 52 of 52 (100%)

Southwestern Appalachians: 123 of 124 (99%)

Ridge and Valley: 71 of 72 (99%)

Piedmont: 75 of 76 (99%)

Southeastern Plains: 251 of 254 (99%)

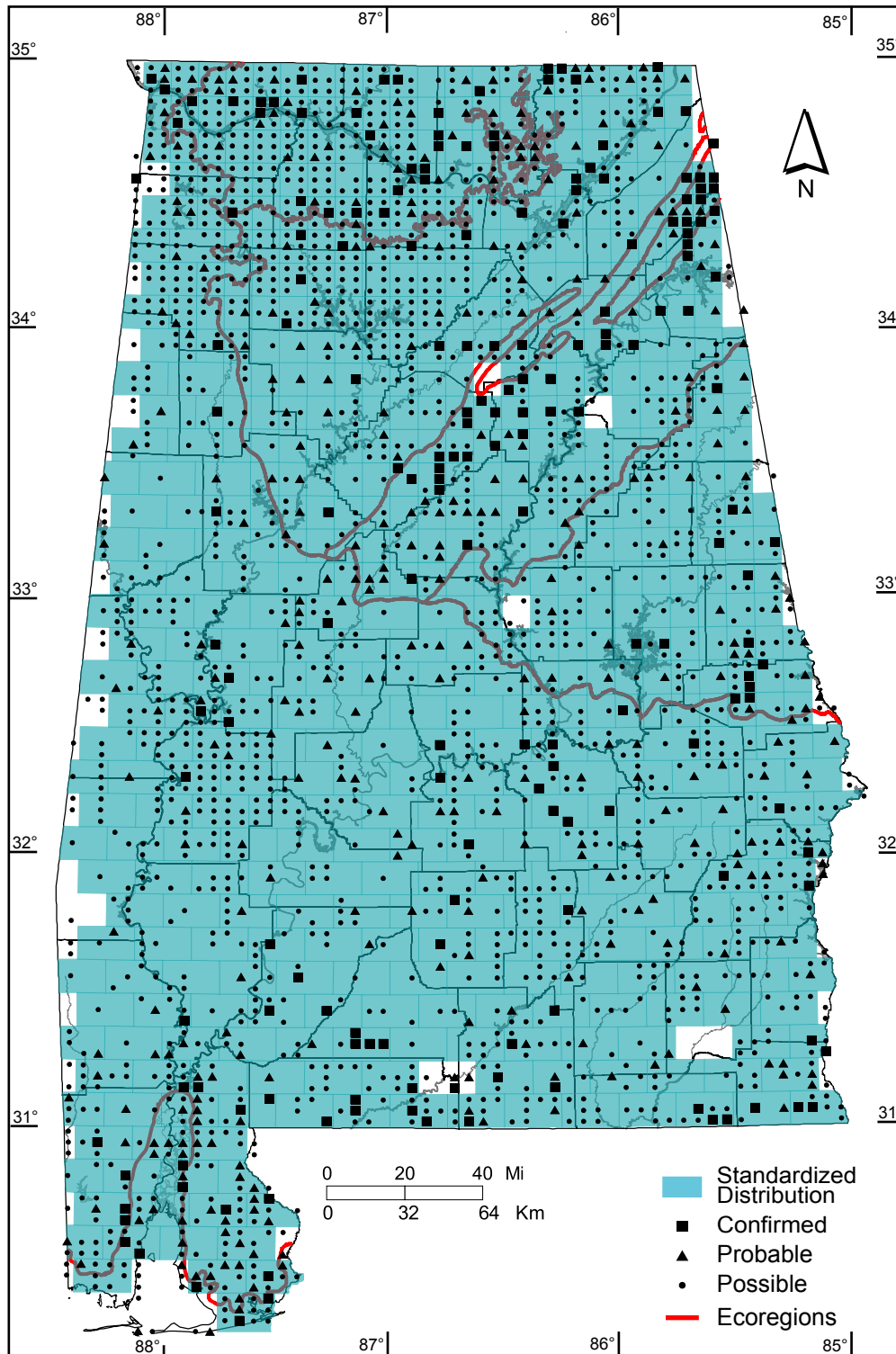
Southern Coastal Plain: 7 of 7 (100%)

Number of Blocks with Breeding Evidence

Total: 2219 of 5087 (44%)

Confirmed: 192 of 5087 (4%)

Safe Dates: April 1 - July 31



©Alabama Breeding Bird Atlas
All Rights Reserved

Hairy Woodpecker (*Picoides villosus*)

Number of Priority Blocks with Breeding Evidence

Total: 285 of 585 (49%)

Confirmed: 18 (6%)

Probable: 52 (18%)

Possible: 215 (76%)

Number of Priority Blocks in Ecoregions with Breeding Evidence

Interior Plateau: 31 of 52 (60%)

Southwestern Appalachians: 77 of 124 (62%)

Ridge and Valley: 32 of 72 (44%)

Piedmont: 49 of 76 (64%)

Southeastern Plains: 95 of 254 (37%)

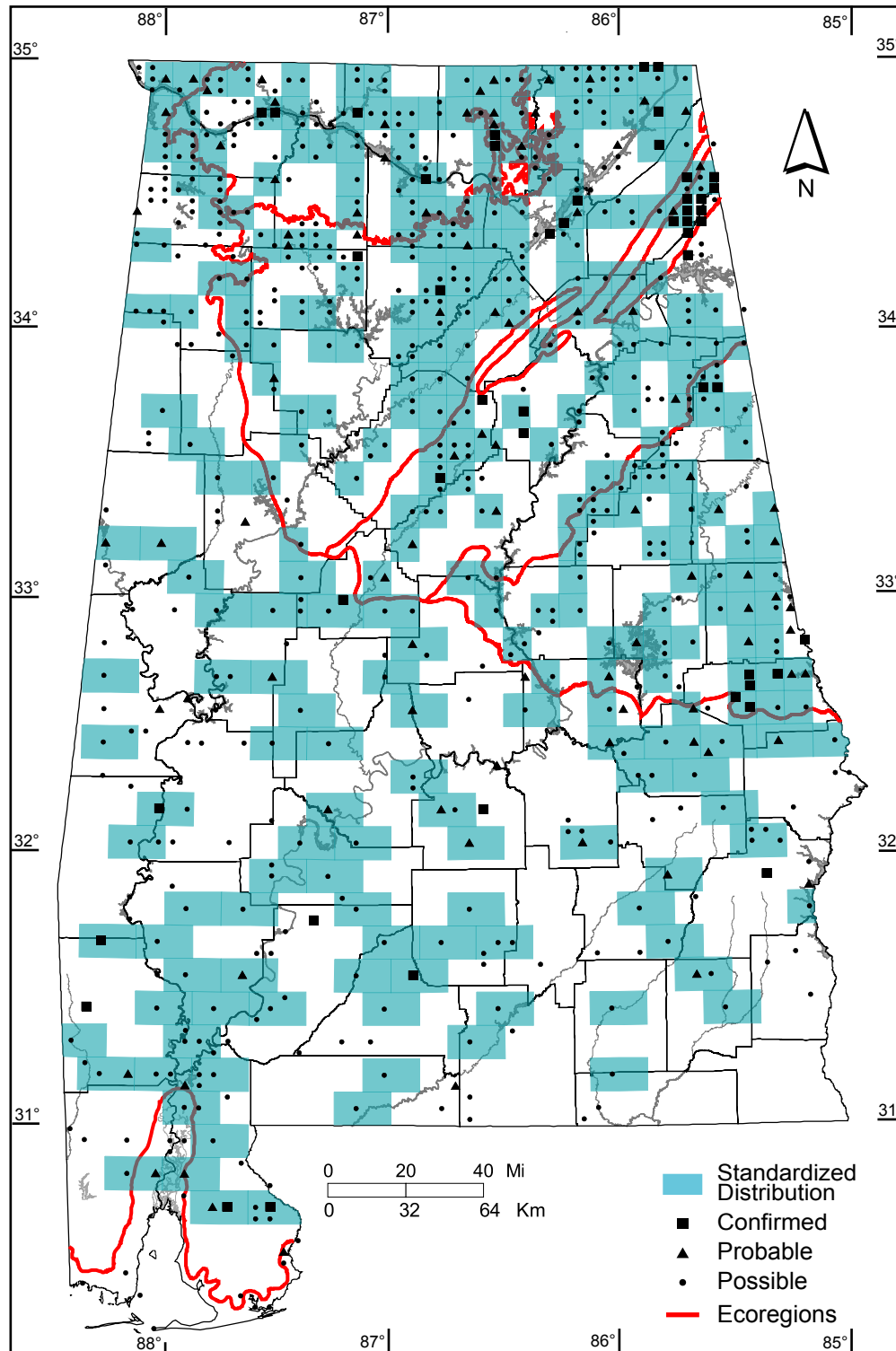
Southern Coastal Plain: 1 of 7 (14%)

Number of Blocks with Breeding Evidence

Total: 689 of 5087 (14%)

Confirmed: 49 of 5087 (1%)

Safe Dates: April 1 - July 31



©Alabama Breeding Bird Atlas
All Rights Reserved

Red-cockaded Woodpecker (*Picoides borealis*)

Number of Priority Blocks with Breeding Evidence

Total: 3 of 585 (1%)

Confirmed: 0 (0%)

Probable: 1 (33%)

Possible: 2 (67%)

Number of Priority Blocks in Ecoregions with Breeding Evidence

Interior Plateau: 0 of 52 (0%)

Southwestern Appalachians: 0 of 124 (0%)

Ridge and Valley: 0 of 72 (0%)

Piedmont: 1 of 76 (1%)

Southeastern Plains: 2 of 254 (1%)

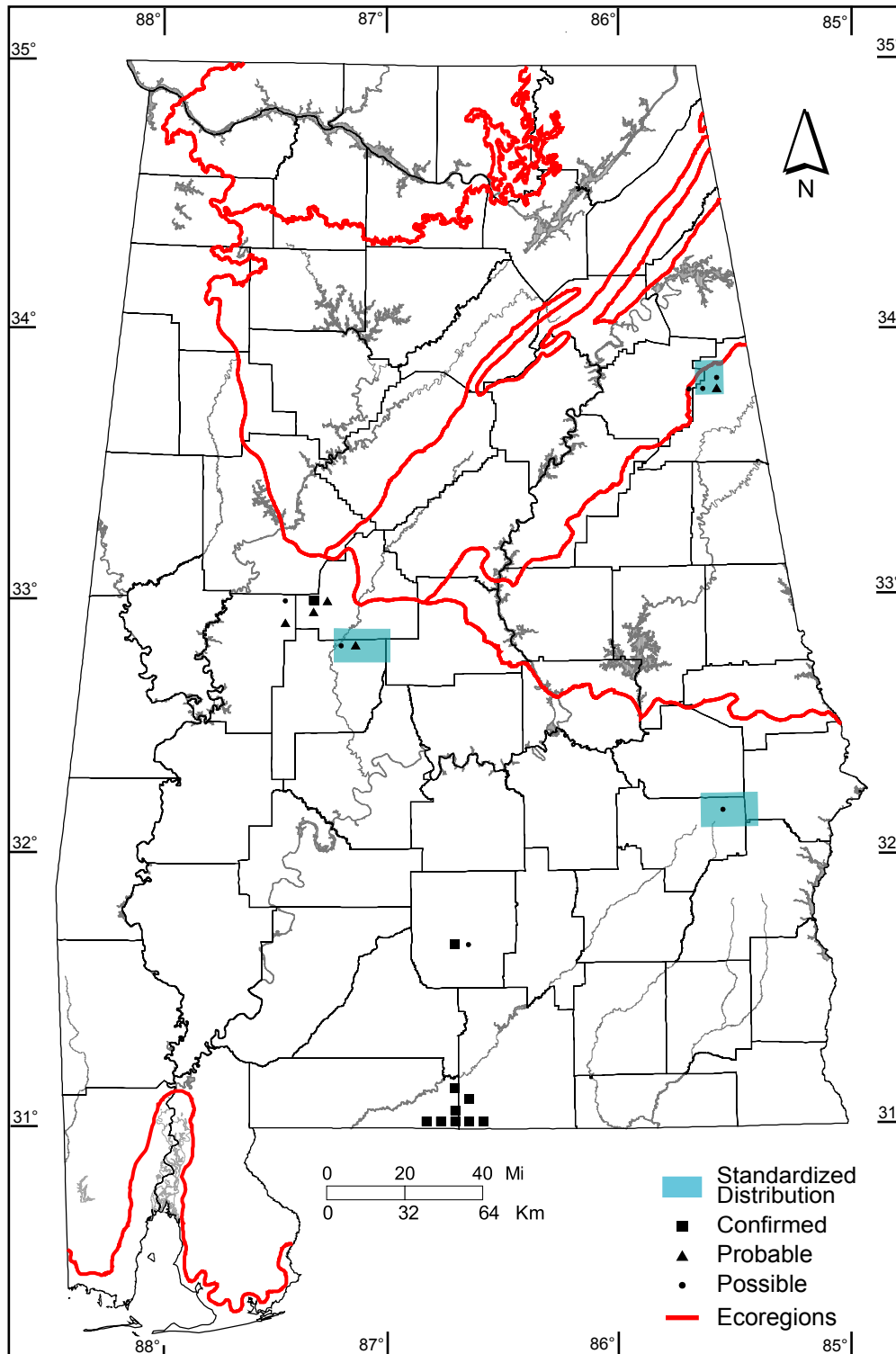
Southern Coastal Plain: 0 of 7 (0%)

Number of Blocks with Breeding Evidence

Total: 22 of 5087 (<1%)

Confirmed: 10 of 5087 (<1%)

Safe Dates: April 1 - July 31



©Alabama Breeding Bird Atlas
All Rights Reserved

Northern Flicker (*Colaptes auratus*)

Number of Priority Blocks with Breeding Evidence

Total: 376 of 585 (64%)

Confirmed: 33 (9%)

Probable: 74 (20%)

Possible: 269 (71%)

Number of Priority Blocks in Ecoregions with Breeding Evidence

Interior Plateau: 36 of 52 (69%)

Southwestern Appalachians: 93 of 124 (75%)

Ridge and Valley: 52 of 72 (72%)

Piedmont: 57 of 76 (75%)

Southeastern Plains: 132 of 254 (52%)

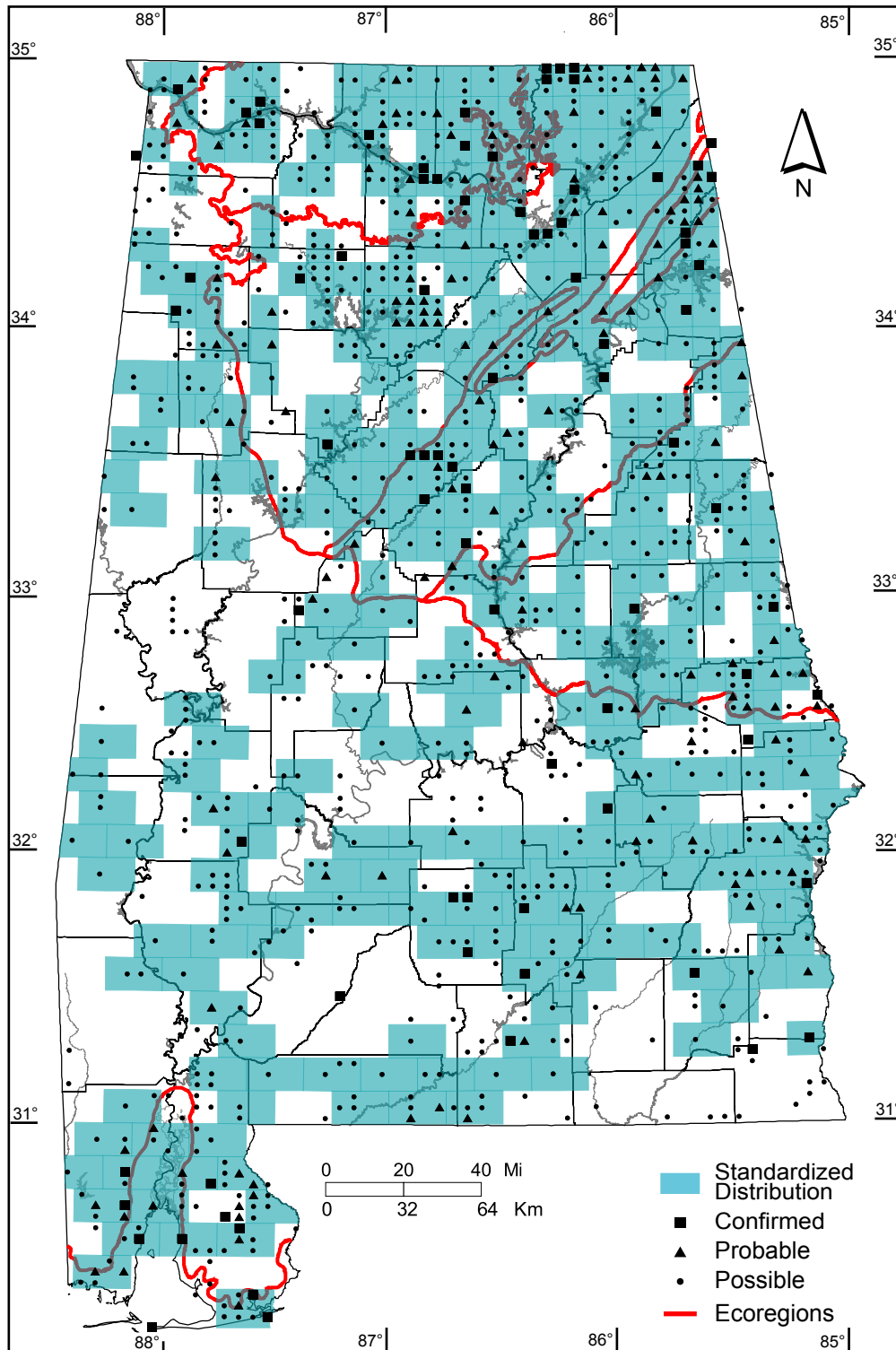
Southern Coastal Plain: 6 of 7 (86%)

Number of Blocks with Breeding Evidence

Total: 1017 of 5087 (20%)

Confirmed: 83 of 5087 (2%)

Safe Dates: May 1 - July 15



©Alabama Breeding Bird Atlas
All Rights Reserved

Pileated Woodpecker (*Dryocopus pileatus*)

Number of Priority Blocks with Breeding Evidence

Total: 503 of 585 (86%)

Confirmed: 35 (7%)

Probable: 132 (26%)

Possible: 336 (67%)

Number of Priority Blocks in Ecoregions with Breeding Evidence

Interior Plateau: 45 of 52 (87%)

Southwestern Appalachians: 104 of 124 (84%)

Ridge and Valley: 52 of 72 (72%)

Piedmont: 67 of 76 (88%)

Southeastern Plains: 230 of 254 (91%)

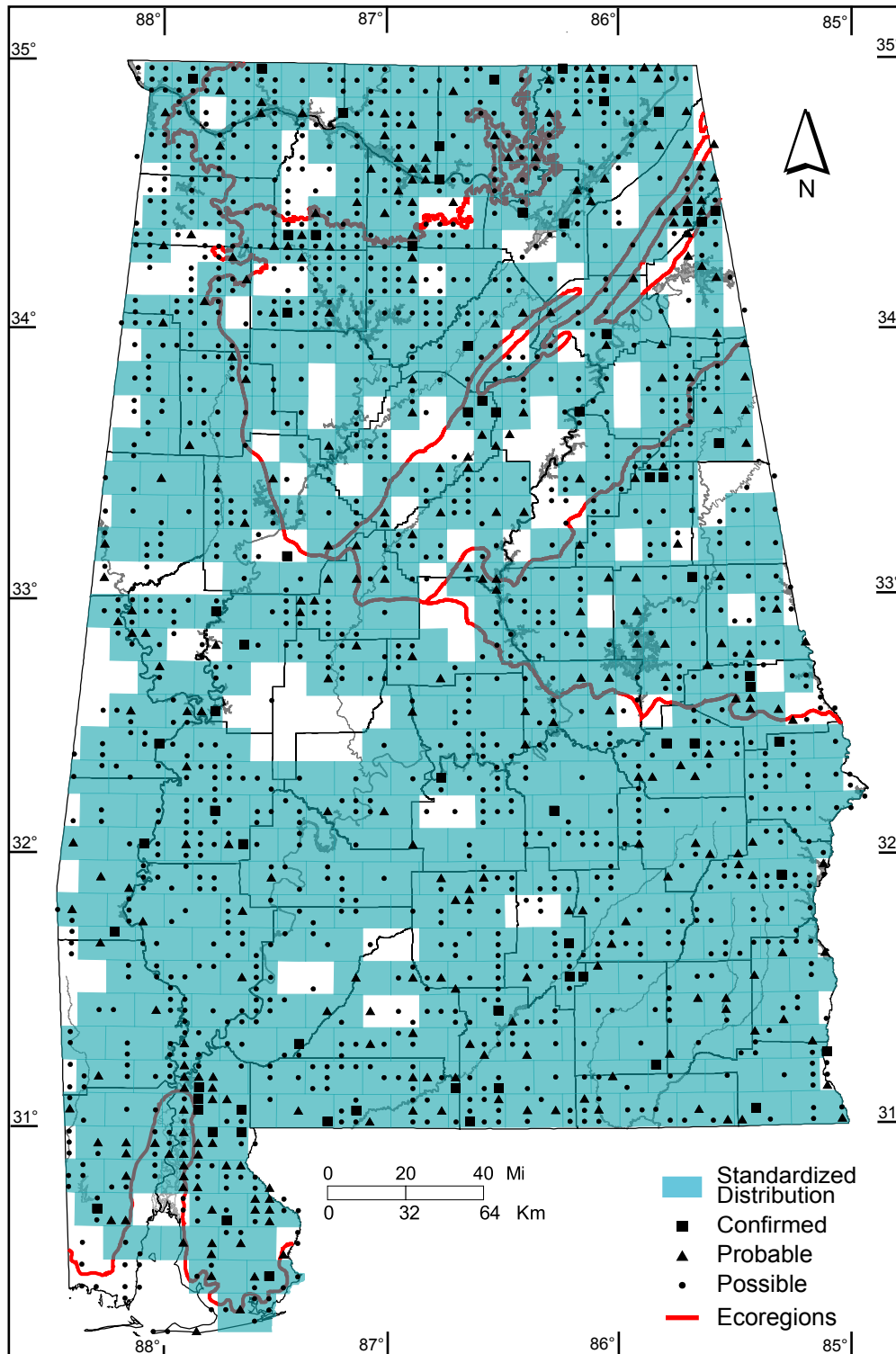
Southern Coastal Plain: 5 of 7 (71%)

Number of Blocks with Breeding Evidence

Total: 1647 of 5087 (32%)

Confirmed: 68 of 5087 (1%)

Safe Dates: March 1 - July 31



©Alabama Breeding Bird Atlas
All Rights Reserved